



COMMERCIAL REAL ESTATE

INDUSTRIAL PROPERTY FOR SALE



Historic District Warehouse

115 W Clark St.
Quincy, FL 32351

CLARK SMITH

Associate
850.510.6333
csmith@tlgproperty.com

TLG REAL ESTATE SERVICES

3520 Thomasville Road, Suite 200
Tallahassee, FL 32309
O: 850.385.6363



EXECUTIVE SUMMARY

HISTORIC DISTRICT WAREHOUSE

115 W CLARK ST, QUINCY, FL 32351

**OFFERING SUMMARY****Sale Price:** \$290,000.00**Lot Size:** 0.59 Acres**Year Built:** 1927**Building Size:** 36,000 SF**APN:** 3-07-2N-3W-0730-00000-1612
3-07-2N-3W-0730-00000-1801**PROPERTY OVERVIEW**

One of Quincy's historic buildings located downtown and was once part of Budd Cigar Company. Perfect for warehouse, storage, etc. This property also includes a parking lot across the street. At \$8.00/ sq. ft. sales price, this is a hard one to pass up.

LOCATION OVERVIEW

Historic District Quincy, Fl.

Clark Smith
850.510.6333
csmith@tlgproperty.com

TLG REAL ESTATE SERVICES
3520 Thomasville Road, Suite 200, Tallahassee, FL 32309
850.385.6363

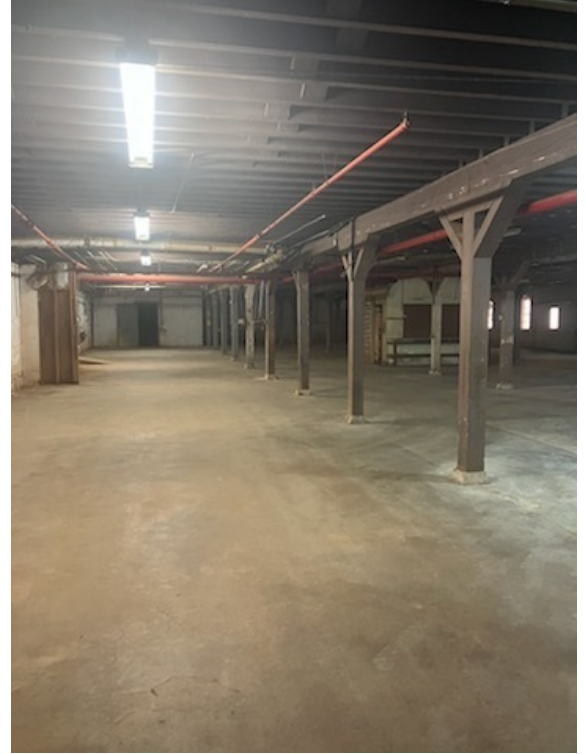




ADDITIONAL PHOTOS

HISTORIC DISTRICT WAREHOUSE

115 W CLARK ST, QUINCY, FL 32351



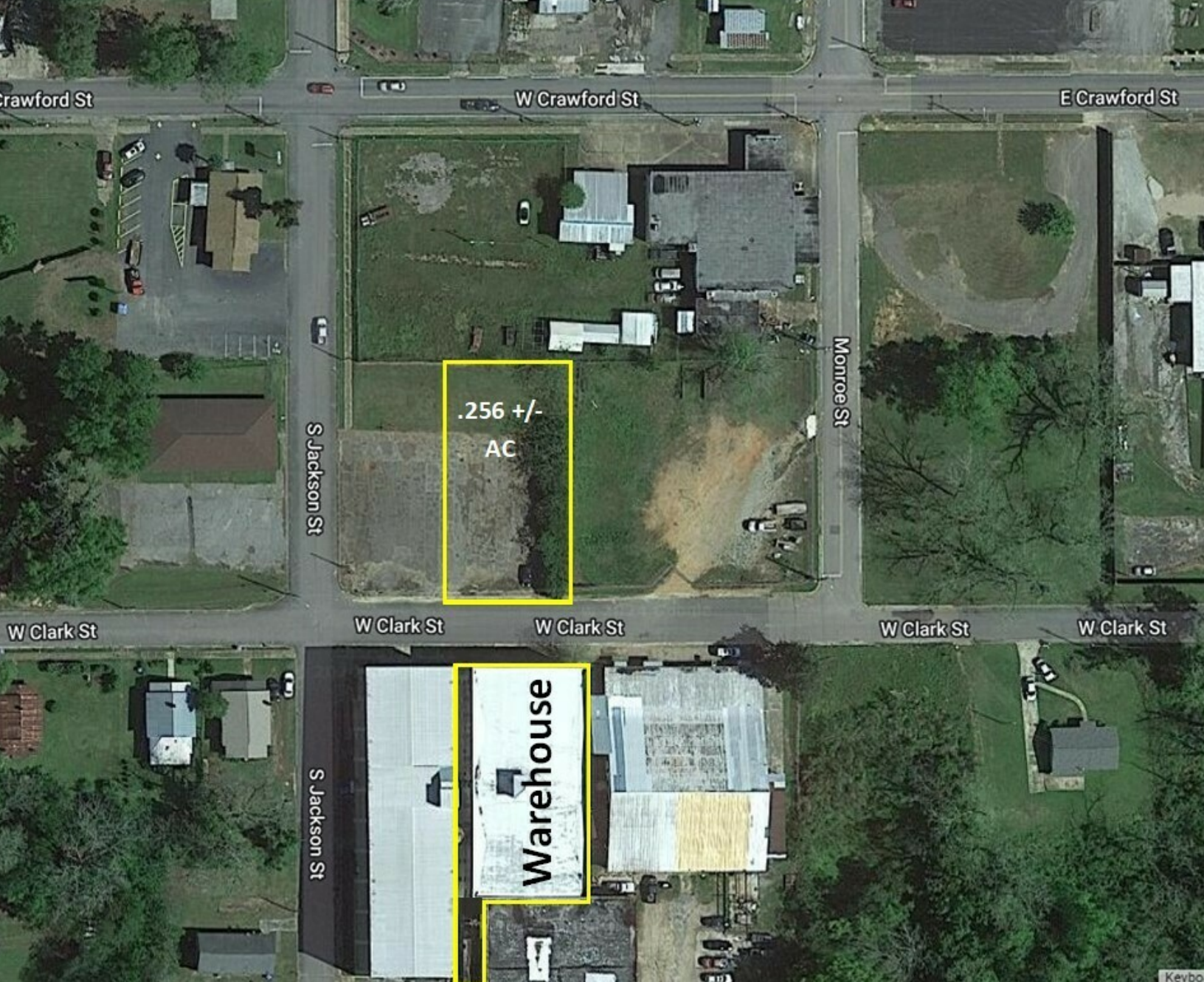
Clark Smith
850.510.6333
csmith@tlgproperty.com

TLG REAL ESTATE SERVICES
3520 Thomasville Road, Suite 200, Tallahassee, FL 32309
850.385.6363





AERIAL - WAREHOUSE AND LOT
HISTORIC DISTRICT WAREHOUSE
115 W CLARK ST, QUINCY, FL 32351



Clark Smith
850.510.6333
csmith@tlgproperty.com

TLG REAL ESTATE SERVICES
3520 Thomasville Road, Suite 200, Tallahassee, FL 32309
850.385.6363





RETAILER MAP

HISTORIC DISTRICT WAREHOUSE

115 W CLARK ST, QUINCY, FL 32351



Clark Smith
 850.510.6333
 csmith@tlgproperty.com

TLG REAL ESTATE SERVICES
 3520 Thomasville Road, Suite 200, Tallahassee, FL 32309
 850.385.6363

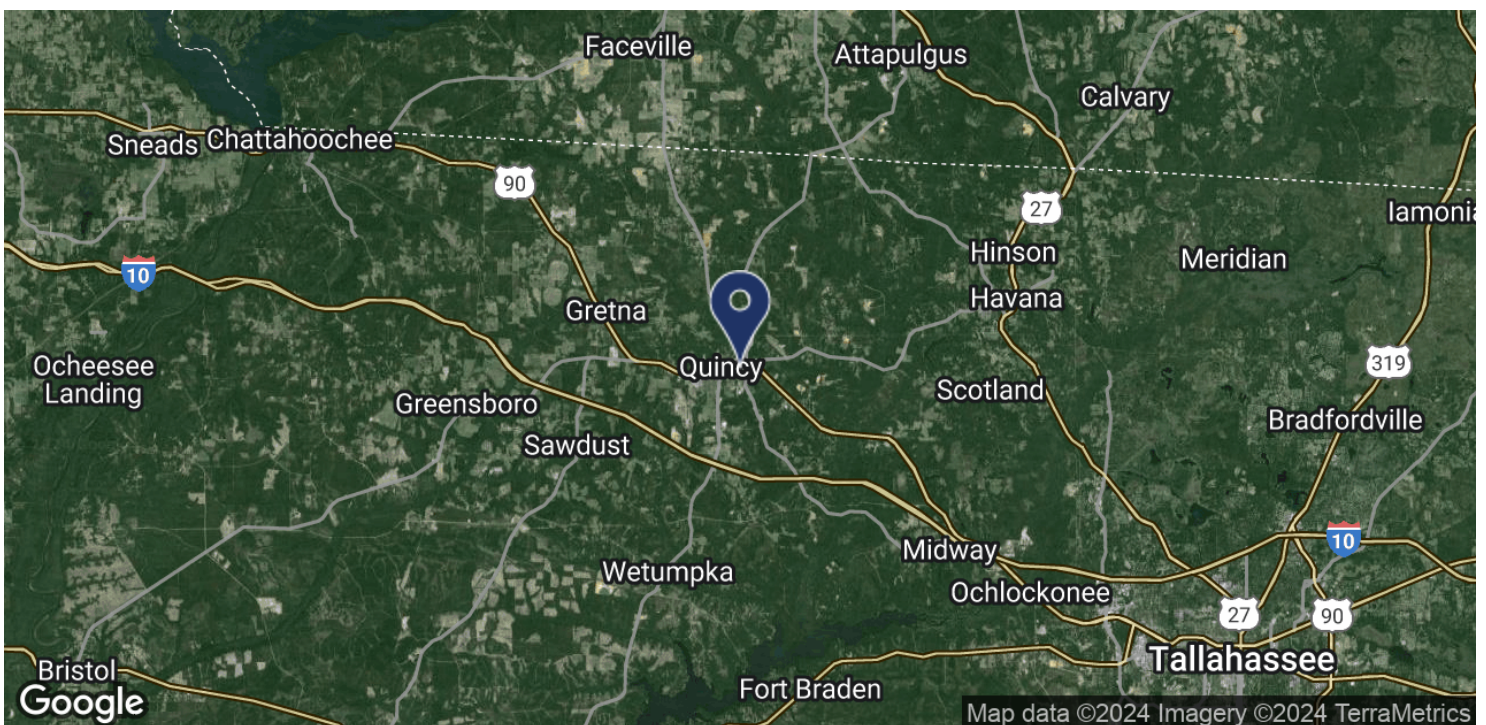
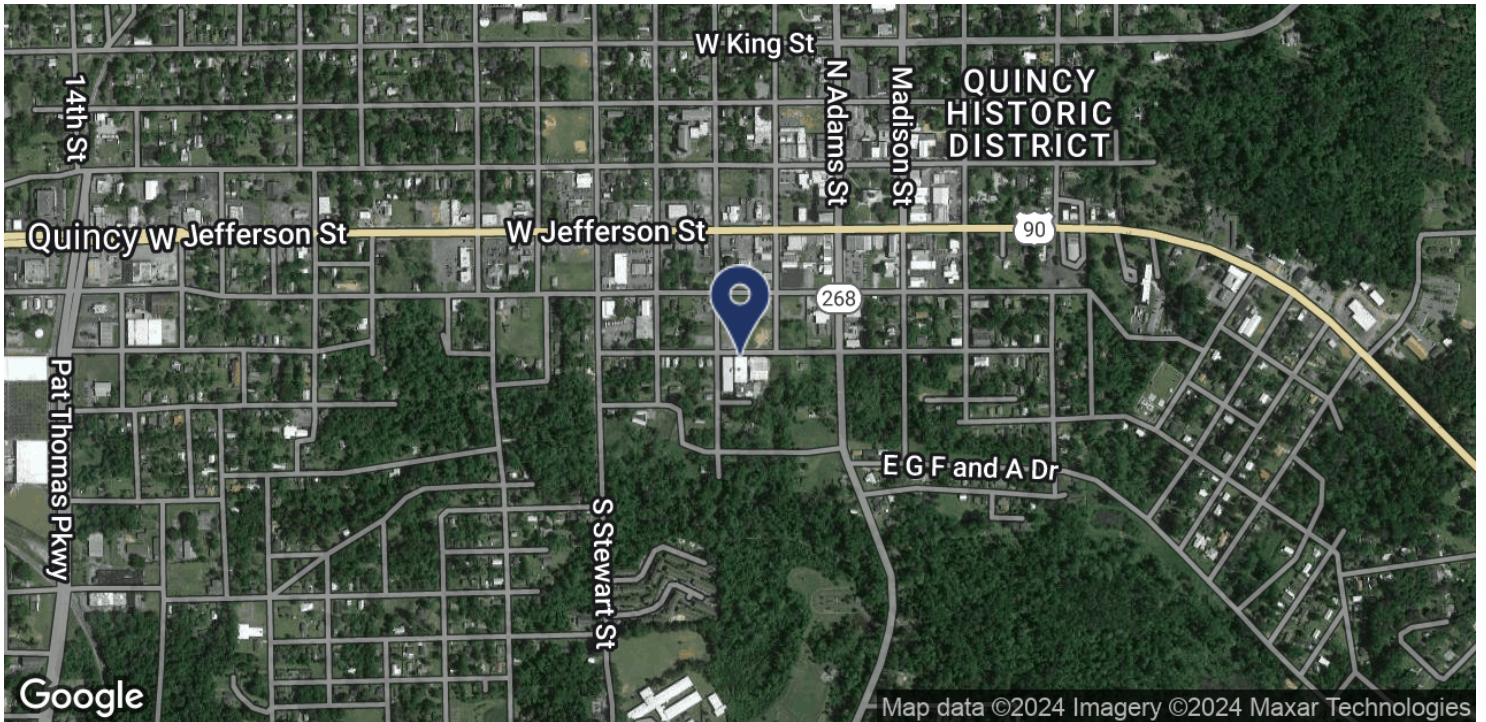




LOCATION MAP

HISTORIC DISTRICT WAREHOUSE

115 W CLARK ST, QUINCY, FL 32351



Clark Smith
850.510.6333
csmith@tlgproperty.com

TLG REAL ESTATE SERVICES
3520 Thomasville Road, Suite 200, Tallahassee, FL 32309
850.385.6363

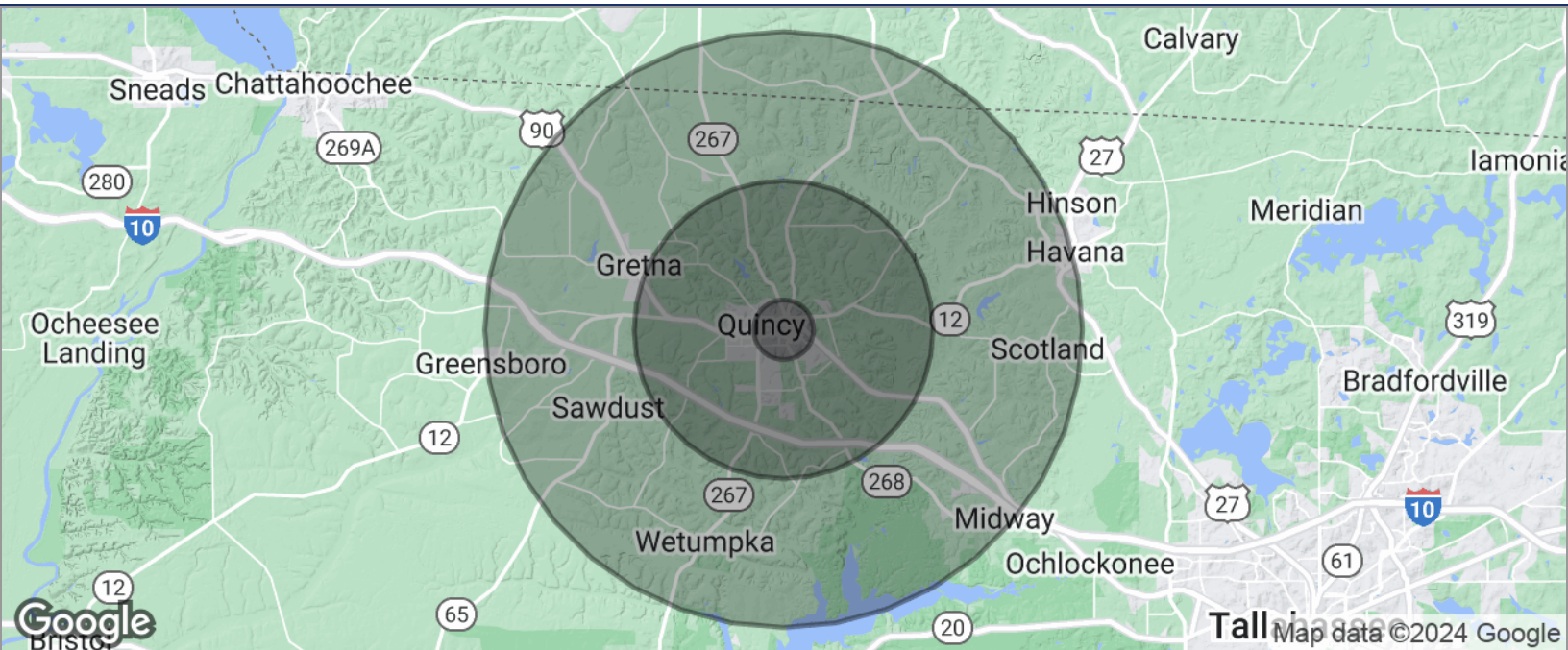




DEMOGRAPHICS MAP

HISTORIC DISTRICT WAREHOUSE

115 W CLARK ST, QUINCY, FL 32351



| POPULATION | 1 MILE | 5 MILES | 10 MILES |
|--------------------------------|---------------|----------------|-----------------|
| TOTAL POPULATION | 68 | 17,400 | 48,552 |
| MEDIAN AGE | 58.9 | 41.4 | 46.1 |
| MEDIAN AGE (MALE) | 63.4 | 40.3 | 45.4 |
| MEDIAN AGE (FEMALE) | 58.7 | 43.6 | 46.8 |
| HOUSEHOLDS & INCOME | 1 MILE | 5 MILES | 10 MILES |
| TOTAL HOUSEHOLDS | 38 | 7,432 | 22,257 |
| # OF PERSONS PER HH | 1.8 | 2.3 | 2.2 |
| AVERAGE HH INCOME | \$38,430 | \$43,136 | \$44,682 |
| AVERAGE HOUSE VALUE | \$202,045 | \$115,983 | \$120,835 |

* Demographic data derived from 2020 ACS - US Census

Clark Smith
850.510.6333
csmith@tlgproperty.com

TLG REAL ESTATE SERVICES
3520 Thomasville Road, Suite 200, Tallahassee, FL 32309
850.385.6363

