

LEFFLER STREET CENTER

514-522 LEFFLER STREET, DODGEVILLE WI 53533

RETAIL FOR LEASE



OFFERING SUMMARY

AVAILABLE:	Suite 518 - 2,600 SF <i>Potential to Subdivide</i> Suite 520 - 600 SF <i>Salon Build Out</i>
LEASE RATE:	Negotiable (Net)
TAX/CAM:	\$6.77 PSF
BUILDING SIZE:	9,100 SF
YEAR BUILT:	2002
ZONING:	M-L Limited Industrial District
CROSS STREETS:	E. Leffer Street & Johns Street

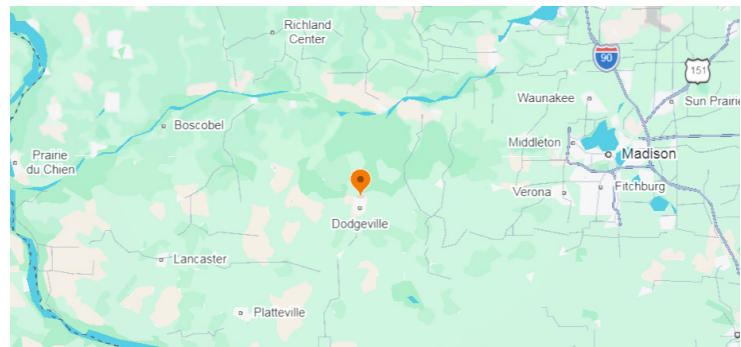
PROPERTY OVERVIEW

Multi-tenant retail center with pylon and building signage on Leffler Street across from Walmart Supercenter in Dodgeville. Leffler Street Center offers a nice mix of co-tenants, ample parking, and flexible zoning allowing for a multitude of usages.

Close to many local, regional, and national businesses such as Walmart Supercenter, Dollar Tree, Farm & Fleet, Lands' End Corporate Headquarters, Sears Holdings Corporation, and Best Western Inn & Suites, along with several fast food/quick food establishments. Dodgeville is located approximately 45 miles west of Madison, WI, and 48 miles east of Dubuque, IA.

PROPERTY HIGHLIGHTS

- Pylon and Building Signage Fronting Leffler Street
- High Visibility - Across from Walmart



AMK PROPERTIES TEAM
Suntide Commercial Realty
2550 University Avenue W. #305-S
St. Paul, MN 55114
651-603-0321

MATTHEW KLEIN, CCIM
Senior Vice President, Principal
(612) 382-3403
mklein@suntide.com
20186454, Minnesota

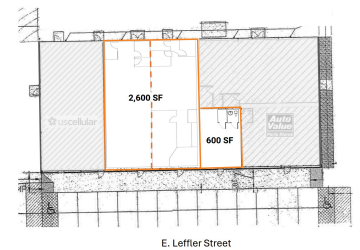
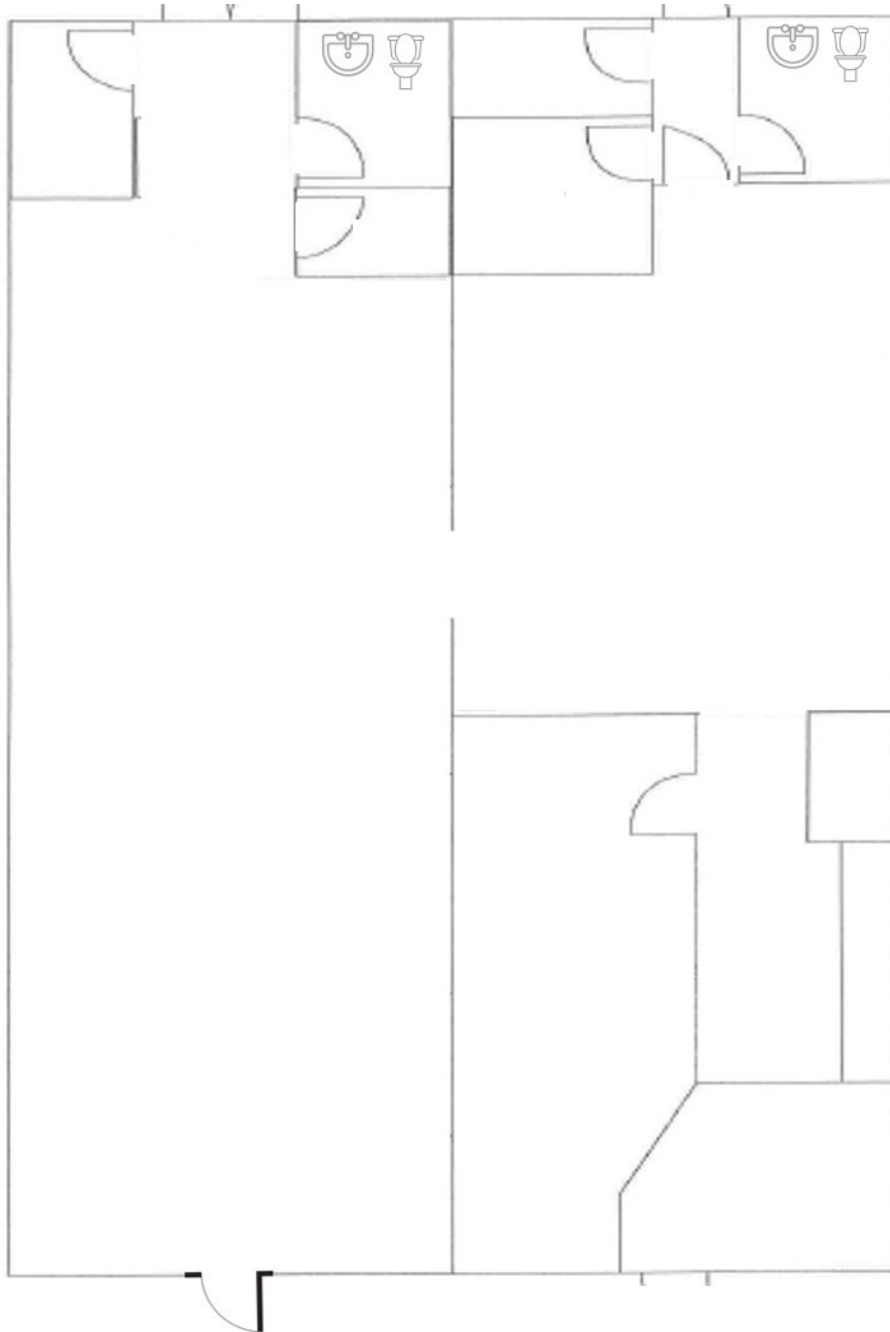


SUITE 518: 2,600 SF

514-522 LEFFLER STREET, DODGEVILLE WI 53533

1,300 SF up to 2,600 SF

SUITE 518:
1,300 up to 2,600 SF



AMK PROPERTIES TEAM
Suntide Commercial Realty
2550 University Avenue W. #305-S
St. Paul, MN 55114
651-603-0321

MATTHEW KLEIN, CCIM
Senior Vice President, Principal
(612) 382-3403
mklein@suntide.com
20186454, Minnesota

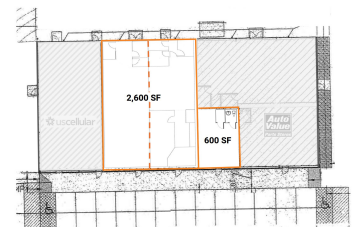
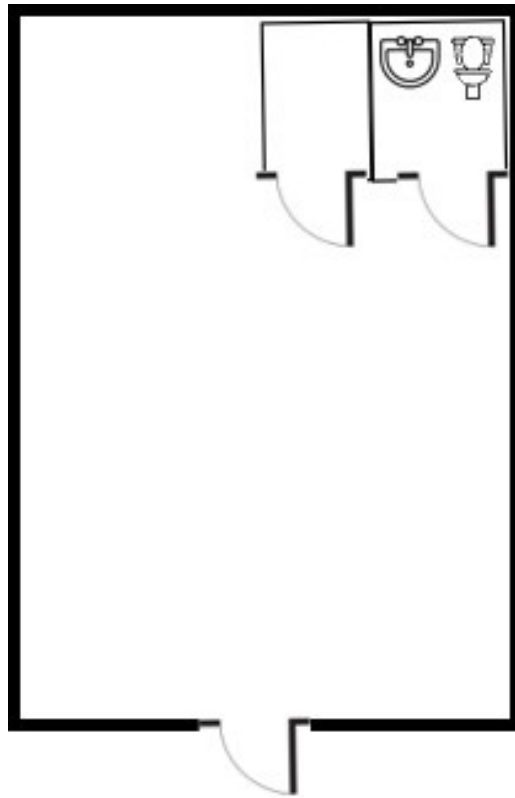


SUITE 520: 600 SF

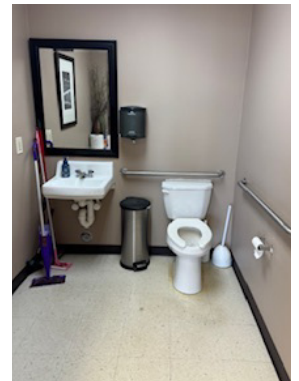
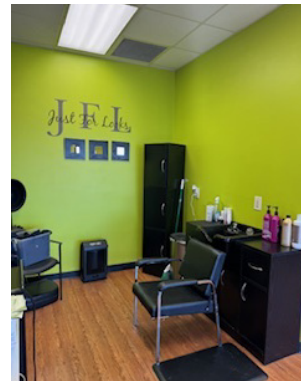
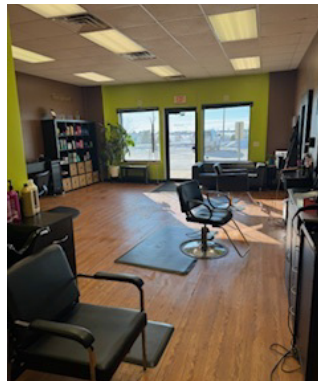
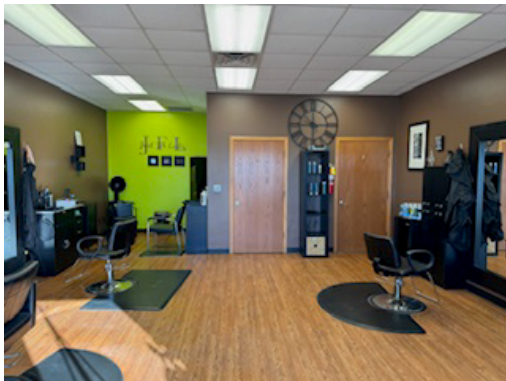
514-522 LEFFLER STREET, DODGEVILLE WI 53533

SALON BUILD OUT

SUITE 520:
600 SF



E. Leffler Street



AMK PROPERTIES TEAM
Suntide Commercial Realty
2550 University Avenue W. #305-S
St. Paul, MN 55114
651-603-0321

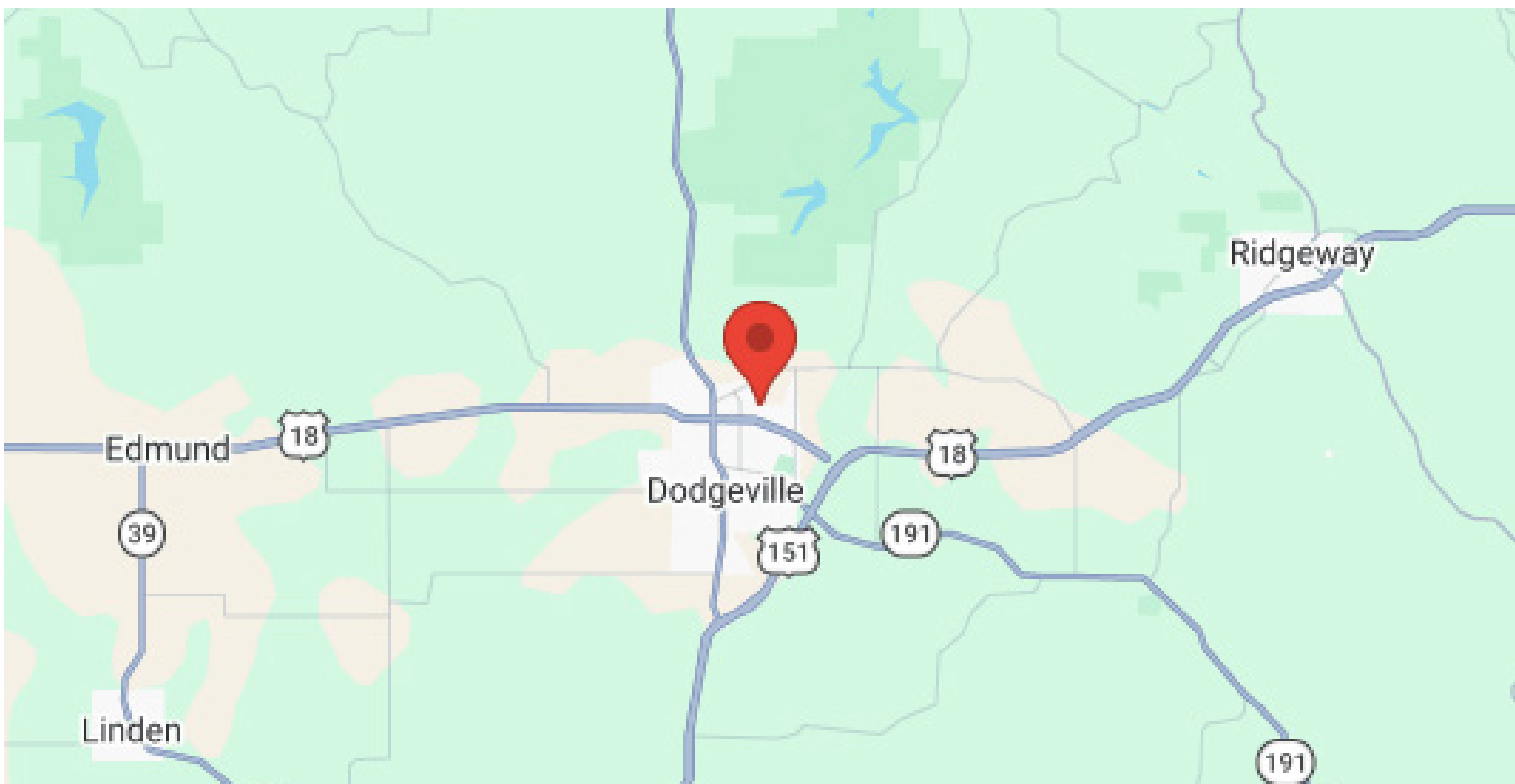
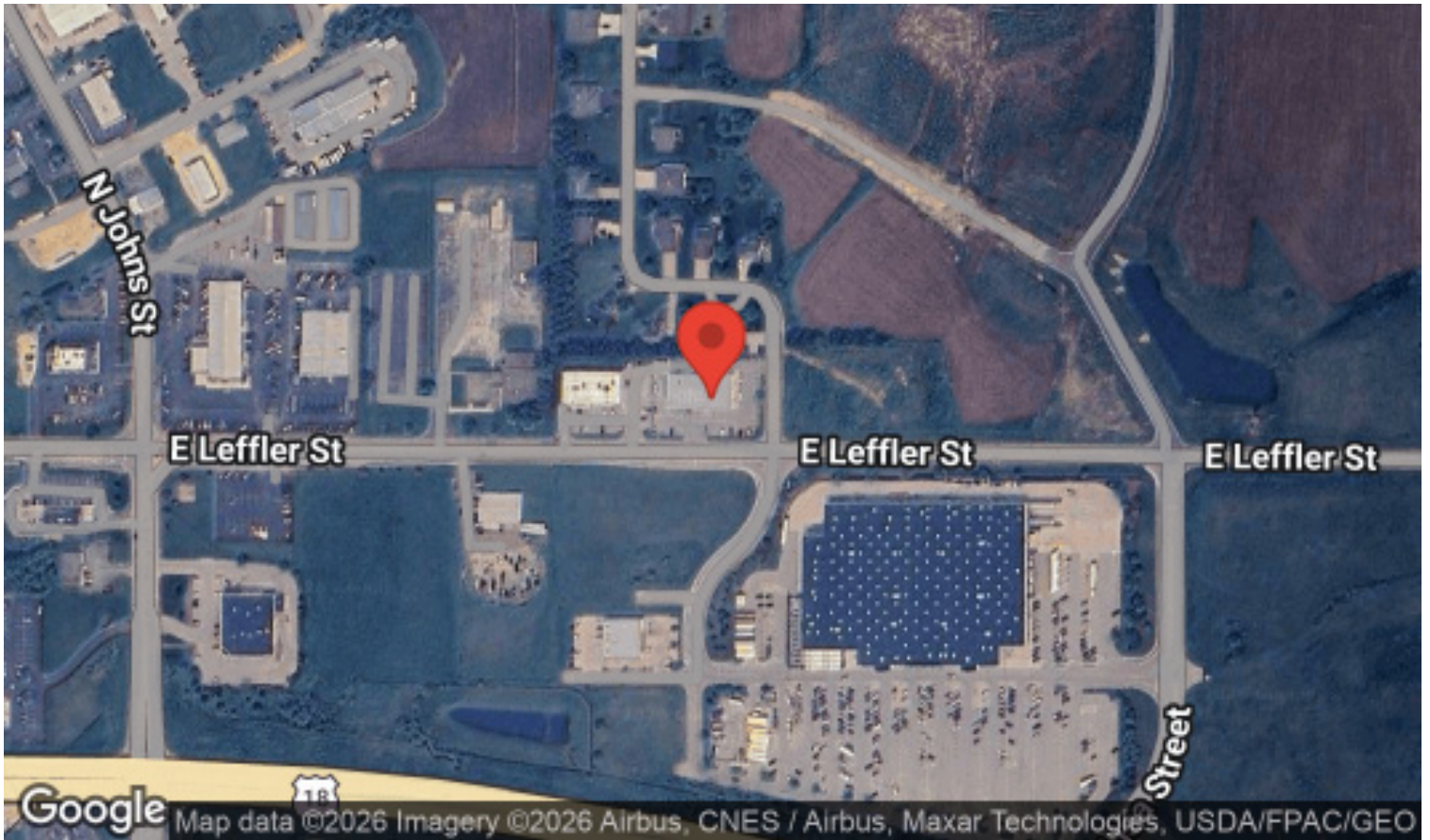
MATTHEW KLEIN, CCIM
Senior Vice President, Principal
(612) 382-3403
mklein@suntide.com
20186454, Minnesota



LOCATION MAPS

514-522 LEFFLER STREET, DODGEVILLE WI 53533

LEFFLER STREET CENTER



AMK PROPERTIES TEAM
Suntide Commercial Realty
2550 University Avenue W. #305-S
St. Paul, MN 55114
651-603-0321

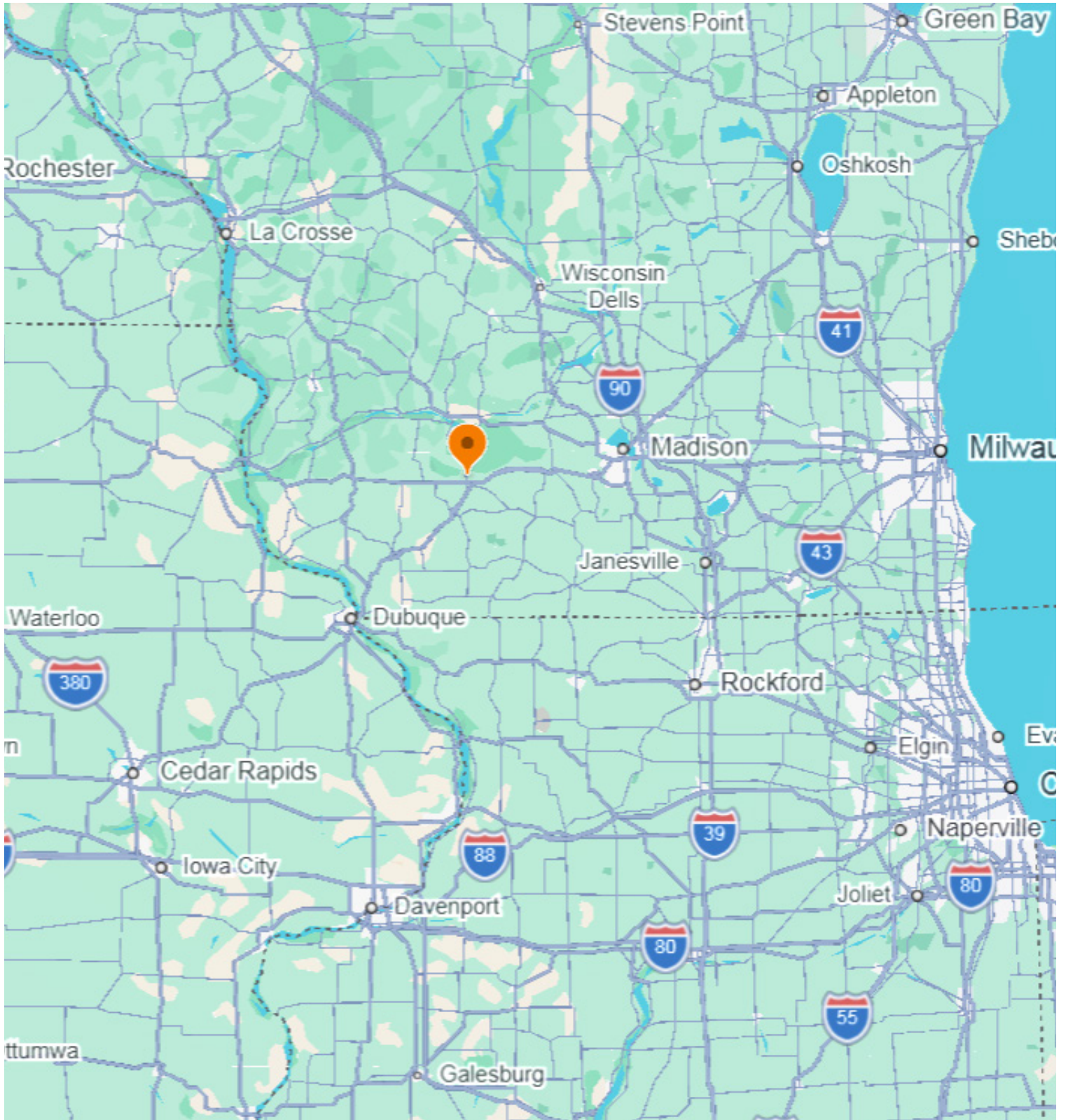
MATTHEW KLEIN, CCIM
Senior Vice President, Principal
(612) 382-3403
mklein@suntide.com
20186454, Minnesota



REGIONAL MAP

514-522 LEFFLER STREET, DODGEVILLE WI 53533

DODGEVILLE, WI



AMK PROPERTIES TEAM
Suntide Commercial Realty
2550 University Avenue W. #305-S
St. Paul, MN 55114
651-603-0321

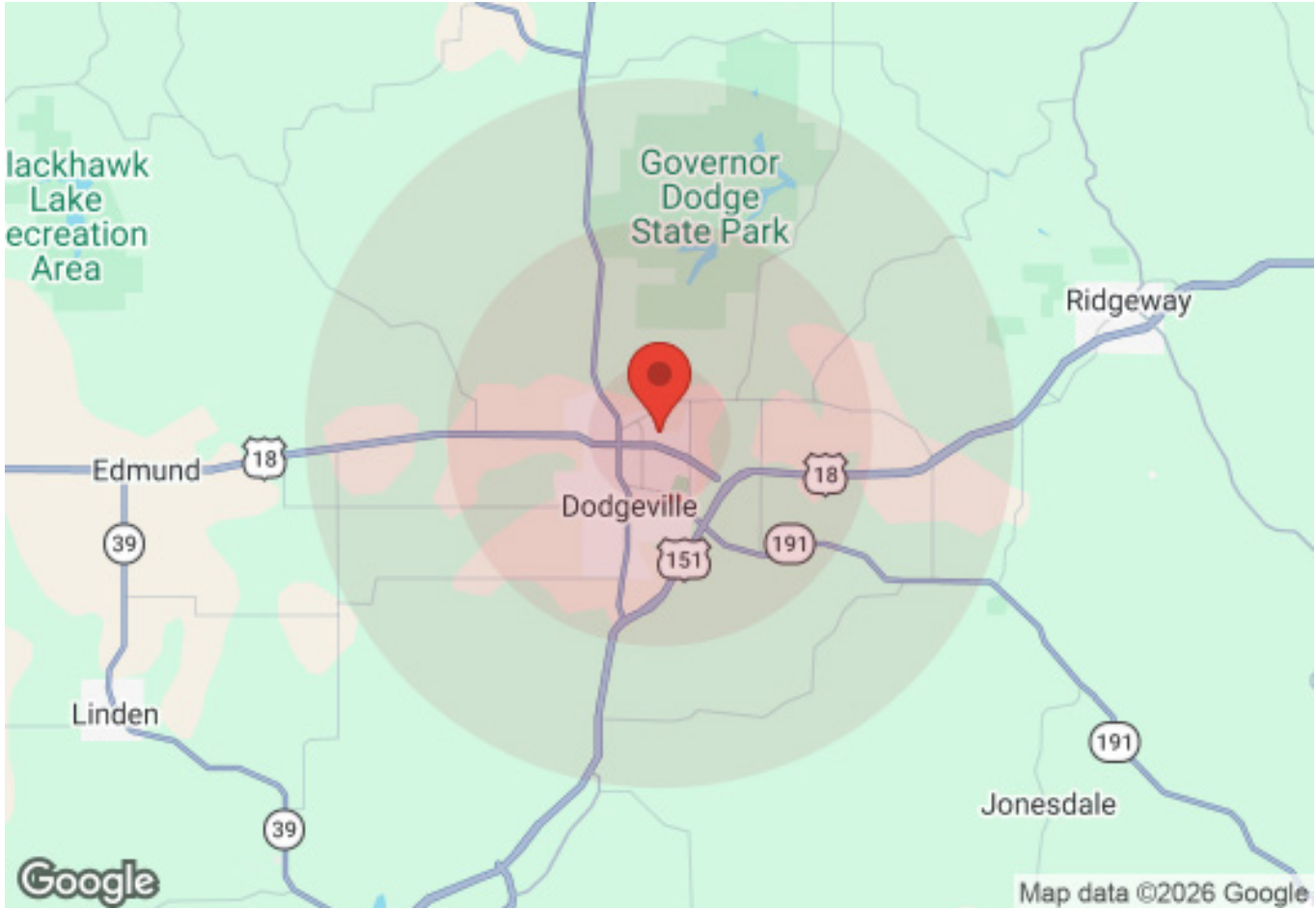
MATTHEW KLEIN, CCIM
Senior Vice President, Principal
(612) 382-3403
mklein@suntide.com
20186454, Minnesota



DEMOGRAPHICS

514-522 LEFFLER STREET, DODGEVILLE WI 53533

DODGEVILLE, WI



Population	1 Mile	3 Miles	5 Miles
Male	1,098	2,802	3,138
Female	1,122	2,887	3,203
Total Population	2,220	5,689	6,341

Age	1 Mile	3 Miles	5 Miles
Ages 0-14	406	983	1,088
Ages 15-24	273	695	766
Ages 25-54	818	2,037	2,254
Ages 55-64	253	759	858
Ages 65+	470	1,215	1,375

Income	1 Mile	3 Miles	5 Miles
Median	\$65,526	\$79,350	\$80,006
< \$15,000	173	322	344
\$15,000-\$24,999	27	76	86
\$25,000-\$34,999	34	129	143
\$35,000-\$49,999	175	297	325
\$50,000-\$74,999	88	328	372
\$75,000-\$99,999	193	403	451
\$100,000-\$149,999	178	502	566
\$150,000-\$199,999	41	242	264
> \$200,000	33	145	170

Housing	1 Mile	3 Miles	5 Miles
Total Units	1,028	2,676	2,984
Occupied	942	2,443	2,722
Owner Occupied	584	1,610	1,820
Renter Occupied	358	833	902
Vacant	86	233	262



AMK PROPERTIES TEAM
 Suntide Commercial Realty
 2550 University Avenue W. #305-S
 St. Paul, MN 55114
 651-603-0321

MATTHEW KLEIN, CCIM
 Senior Vice President, Principal
 (612) 382-3403
 mklein@suntide.com
 20186454, Minnesota

