

Hard to Find Small Industrial Building

±4,543 SF on ±0.16 Acres

990 N Amelia Avenue, San Dimas, CA 91773



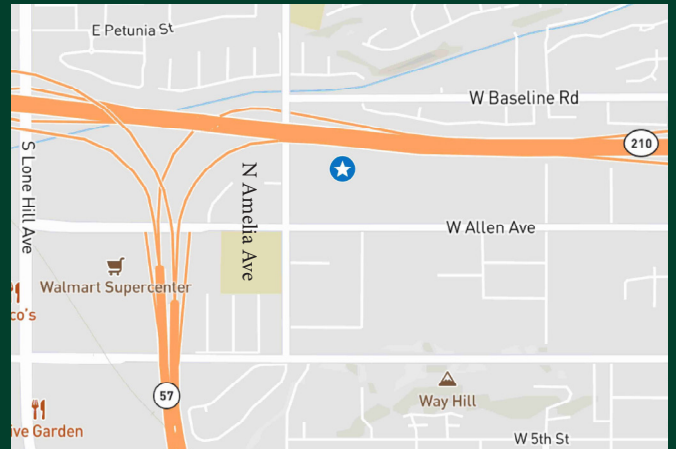
Contact Us

Lynn Knox
Senior Vice President
+1 909 418 2112
lynn.knox@cbre.com
Lic. 01228367

Case Dahlen
First Vice President
+1 909 418 2089
case.dahlen@cbre.com
Lic. 01841537

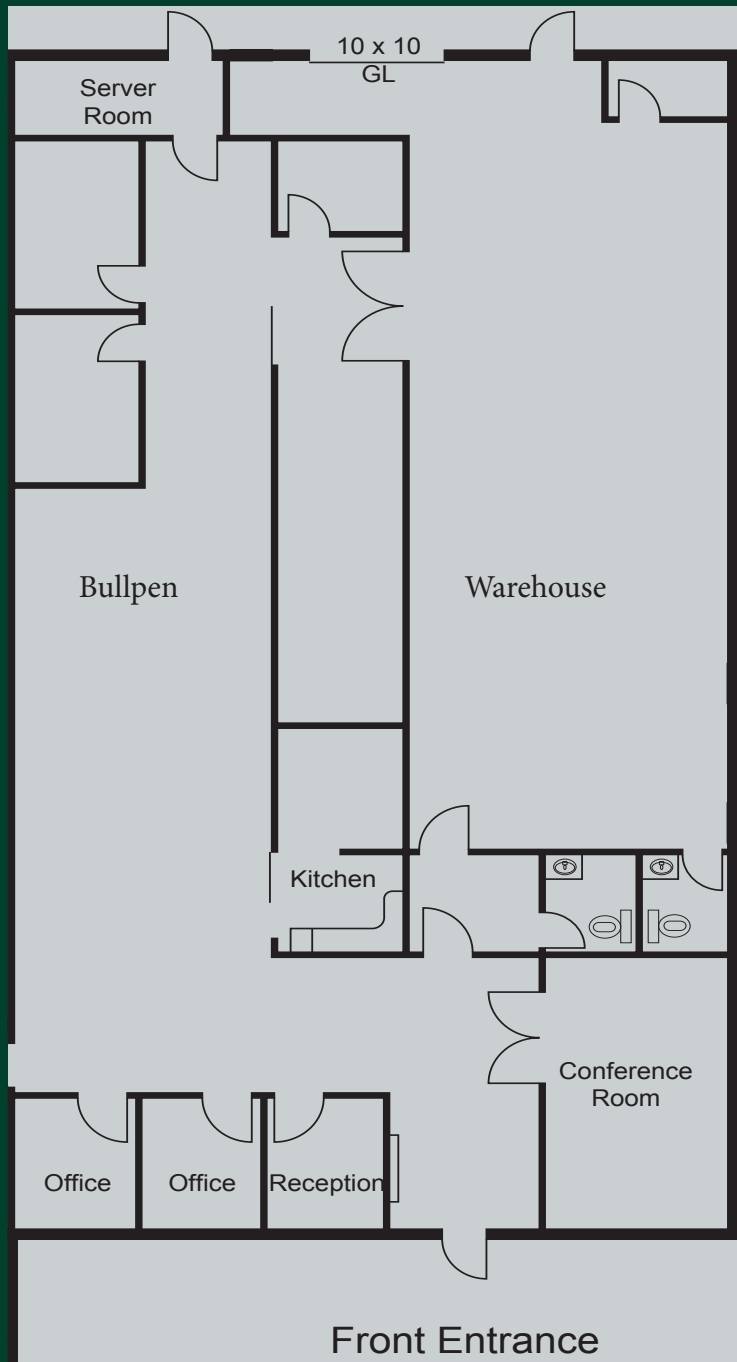
Property Features

- + Located in the Amelia Industrial Park
- + ±4,543 SF on ±0.16 Acres of Land
- + Office: ±2,875 SF
- + 15' Clearance
- + 1 Ground Level Door (10' x 10')
- + 9 Parking Spaces
- + Well-Designed Offices, Tile Flooring, Skylights, and T5 Lighting
- + Building is 100% HVAC
- + Server Room with Separate HVAC Unit
- + Easy Access to 210 Freeway Via Lone Hill Ave



© 2026 CBRE, Inc. All rights reserved. This information has been obtained from sources believed reliable, but has not been verified for accuracy or completeness. You should conduct a careful, independent investigation of the property and verify all information. Any reliance on this information is solely at your own risk. CBRE and the CBRE logo are service marks of CBRE, Inc. All other marks displayed on this document are the property of their respective owners, and the use of such logos does not imply any affiliation with or endorsement of CBRE. Photos herein are the property of their respective owners. Use of these images without the express written consent of the owner is prohibited.

Site Plan



© 2026 CBRE, Inc. All rights reserved. This information has been obtained from sources believed reliable, but has not been verified for accuracy or completeness. You should conduct a careful, independent investigation of the property and verify all information. Any reliance on this information is solely at your own risk. CBRE and the CBRE logo are service marks of CBRE, Inc. All other marks displayed on this document are the property of their respective owners, and the use of such logos does not imply any affiliation with or endorsement of CBRE. Photos herein are the property of their respective owners. Use of these images without the express written consent of the owner is prohibited.

Photos



Contact Us

Lynn Knox
Senior Vice President
+1 909 418 2112
lynn.knox@cbre.com
Lic. 01228367

Case Dahlen
First Vice President
+1 909 418 2089
case.dahlen@cbre.com
Lic. 01841537

© 2026 CBRE, Inc. All rights reserved. This information has been obtained from sources believed reliable, but has not been verified for accuracy or completeness. You should conduct a careful, independent investigation of the property and verify all information. Any reliance on this information is solely at your own risk. CBRE and the CBRE logo are service marks of CBRE, Inc. All other marks displayed on this document are the property of their respective owners, and the use of such logos does not imply any affiliation with or endorsement of CBRE. Photos herein are the property of their respective owners. Use of these images without the express written consent of the owner is prohibited.