

OFFICE/R&D FOR LEASE

713, 719, & 723 N SHORELINE BLVD, MOUNTAIN VIEW, CA



±1,500 - ±5,890 SF R&D Offices Available For Lease

New improvements to the front unit with 100% HVAC

Flexible workspace and open collaborative break room

North Shoreline location and close to amenities

Close to Caltrain & one mile from Hwy 101 and Hwy 85

On-site parking and mature landscaping

Call broker to tour

High ceiling, exposed beams, polished concrete floors, skylights, glass roll-up door and glass on two sides

DAVE GEISSBERGER

408.588.2338

dave.geissberger@kidder.com

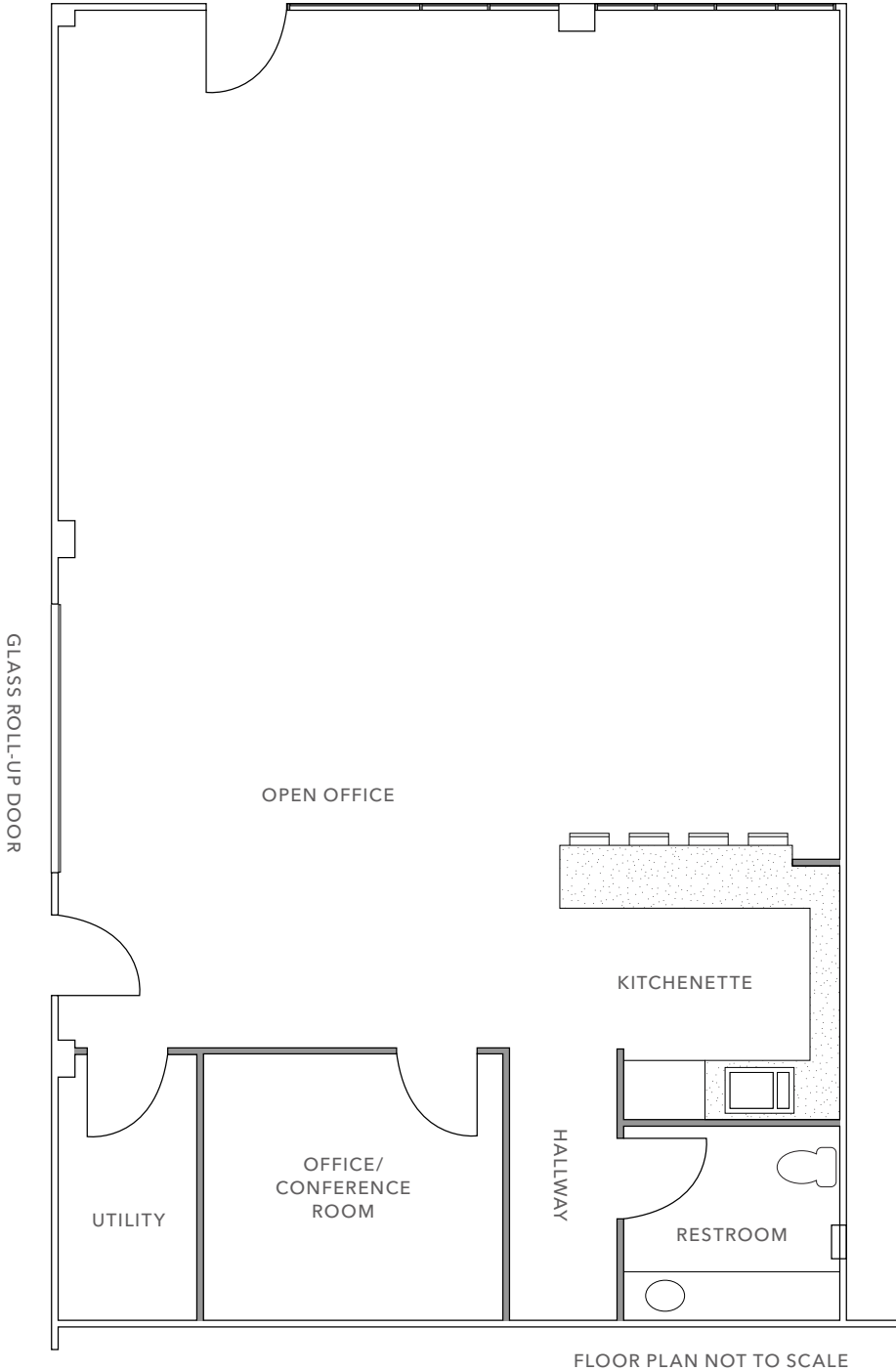
LIC N° 01401887

KIDDER.COM

This information supplied herein is from sources we deem reliable. It is provided without any representation, warranty, or guarantee, expressed or implied as to its accuracy. Prospective Buyer or Tenant should conduct an independent investigation and verification of all matters deemed to be material, including, but not limited to, statements of income and expenses. Consult your attorney, accountant, or other professional advisor.

km Kidder
Mathews

713 N SHORELINE BLVD



+1,500 SF
SIZE

\$5.50
PSF GROSS

5/1/24
AVAILABLE

*For more
information,
contact*

DAVE GEISSBERGER
408.588.2338
dave.geissberger@kidder.com
LIC N° 01401887

KIDDER.COM

This information supplied herein is from sources we deem reliable. It is provided without any representation, warranty, or guarantee, expressed or implied as to its accuracy. Prospective Buyer or Tenant should conduct an independent investigation and verification of all matters deemed to be material, including, but not limited to, statements of income and expenses. Consult your attorney, accountant, or other professional advisor.



713 N SHORELINE BLVD



KIDDER.COM

This information supplied herein is from sources we deem reliable. It is provided without any representation, warranty, or guarantee, expressed or implied as to its accuracy. Prospective Buyer or Tenant should conduct an independent investigation and verification of all matters deemed to be material, including, but not limited to, statements of income and expenses. Consult your attorney, accountant, or other professional advisor.



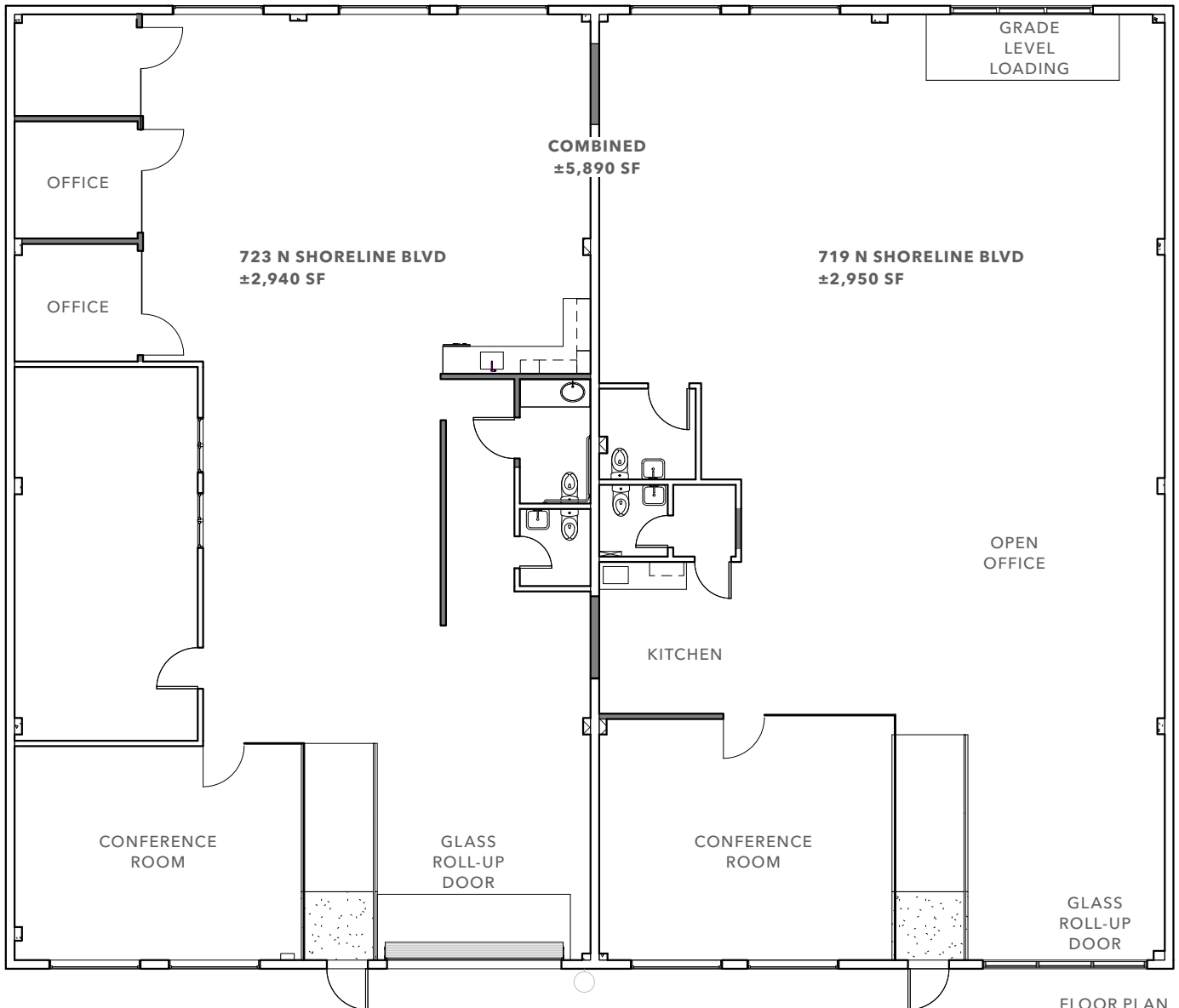
719 & 723 N SHORELINE BLVD

\$5.50

PSF GROSS

NOW

AVAILABLE



FLOOR PLAN
NOT TO SCALE

KIDDER.COM

This information supplied herein is from sources we deem reliable. It is provided without any representation, warranty, or guarantee, expressed or implied as to its accuracy. Prospective Buyer or Tenant should conduct an independent investigation and verification of all matters deemed to be material, including, but not limited to, statements of income and expenses. Consult your attorney, accountant, or other professional advisor.



719 & 723 N SHORELINE BLVD



KIDDER.COM

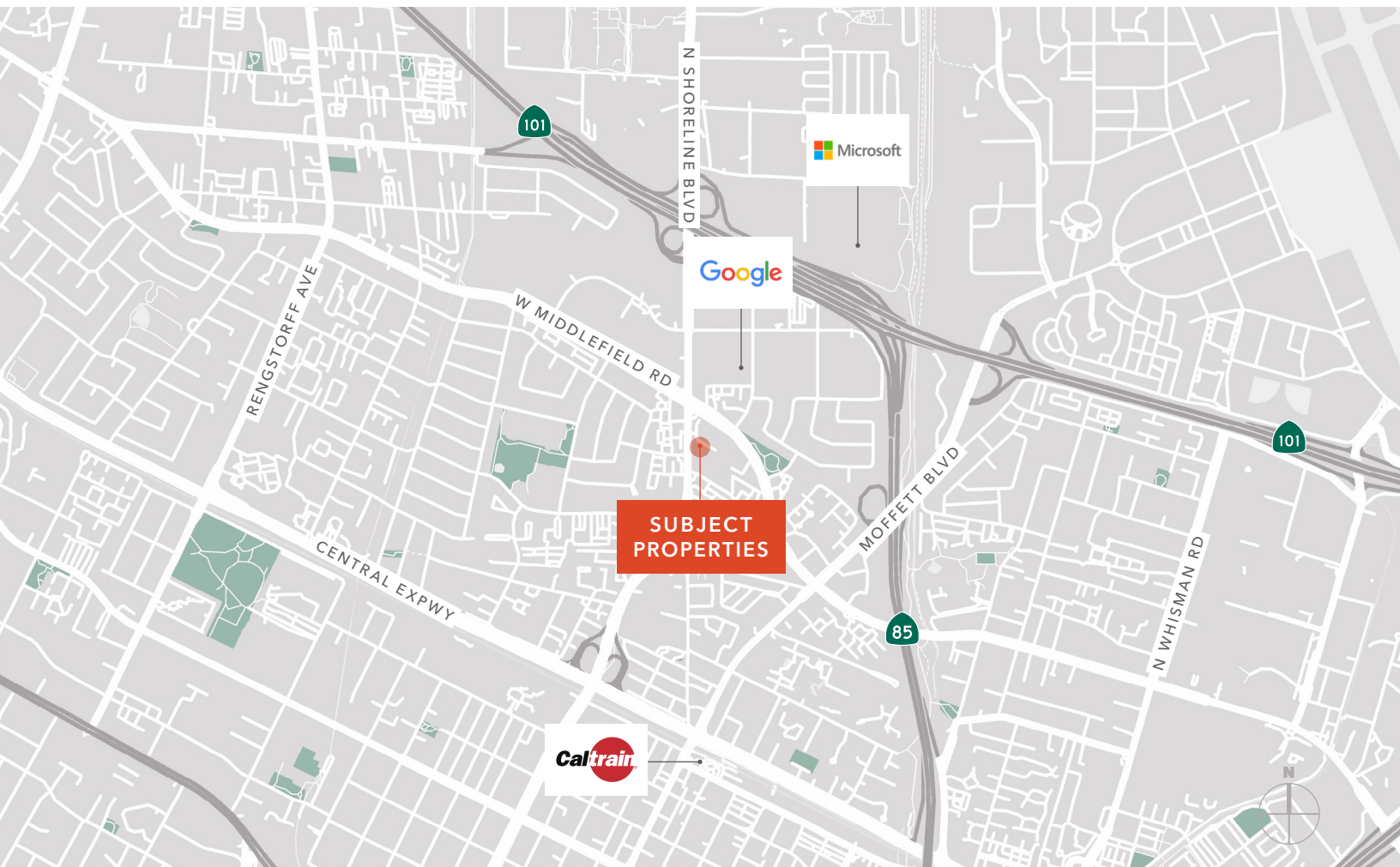
This information supplied herein is from sources we deem reliable. It is provided without any representation, warranty, or guarantee, expressed or implied as to its accuracy. Prospective Buyer or Tenant should conduct an independent investigation and verification of all matters deemed to be material, including, but not limited to, statements of income and expenses. Consult your attorney, accountant, or other professional advisor.

713, 719, & 723 N SHORELINE



DRIVING DISTANCE FROM SUBJECT

CALTRAIN MOUNTAIN VIEW STATION	5 minutes
PALO ALTO	10 minutes
SAN JOSE INT'L AIRPORT	15 minutes
DOWNTOWN SAN JOSE	20 minutes
SAN FRANCISCO INT'L AIRPORT	25 minutes



KIDDER.COM

This information supplied herein is from sources we deem reliable. It is provided without any representation, warranty, or guarantee, expressed or implied as to its accuracy. Prospective Buyer or Tenant should conduct an independent investigation and verification of all matters deemed to be material, including, but not limited to, statements of income and expenses. Consult your attorney, accountant, or other professional advisor.



EAT + DRINK

- 01 Safeway
- 02 Momoya Sushi
- 03 Jack in the Box
- 04 Chef Zhao Bistro
- 05 Los Portales
- 06 Taqueria Tres Hermanos
- 07 Shana Thai

- 08 Chez TJ
- 09 Little Sheep Mongolian
- 10 Vaso Azzuro
- 11 Oren's Hummus
- 12 Bushido
- 13 Asian Box
- 14 Doppio Zero

- 15 Blue Line Pizza
- 16 Eureka!
- 17 Fiesta Del Mar Too
- 18 Don Giovanni
- 19 Bonchon Chicken
- 20 Crepevine
- 21 Sushi Tomi

