

2823 NORTH 36TH AVENUE

Phoenix, AZ 85009



Industrial Space For Lease



PROPERTY DESCRIPTION

- ±13,800 SF Multi Tenant Warehouse
- Located ±1 Mile West of Interstate 17
- Located at 36th Avenue and Thomas Road
- Zoning: CP/GCP
- ±14' Tall OH Doors - Grade Level
- ±17' Clear Height
- Common Restrooms

ROD CROTTY

Associate Broker | 602.386.1225 (D)
rcroty@cutlercommercial.com

TWO AVAILABLE SUITES - SUITE 101 (±1,040 SF) & SUITE 105 (±1,220 SF)

- ±1,040-1,220 SF
- No Office - 100% Warehouse
- ±10'x14' Grade Level Door
- Evap Cooled
- Common Area Restrooms (**Note - Unit 101 has a Private Restroom**)

CUTLER COMMERCIAL

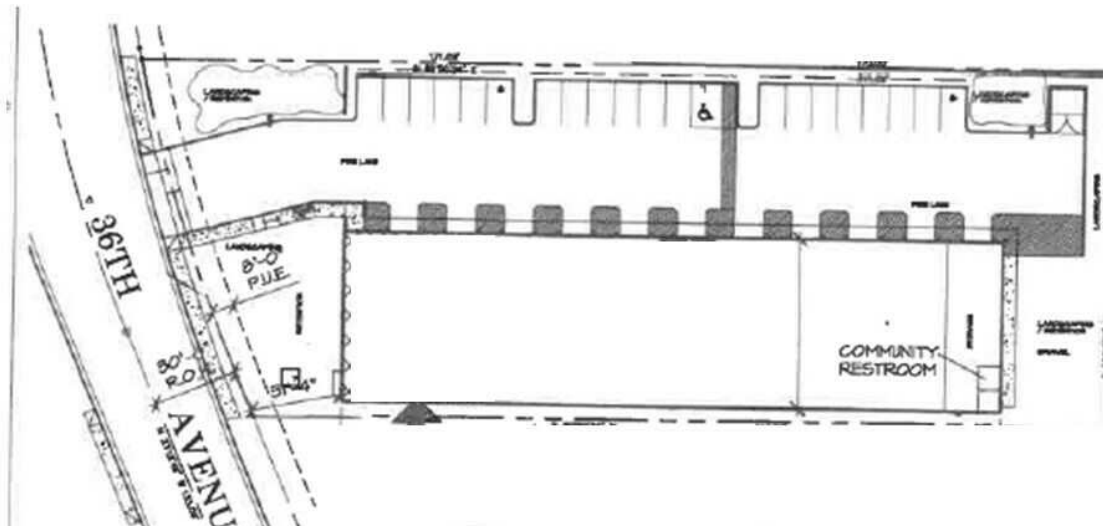
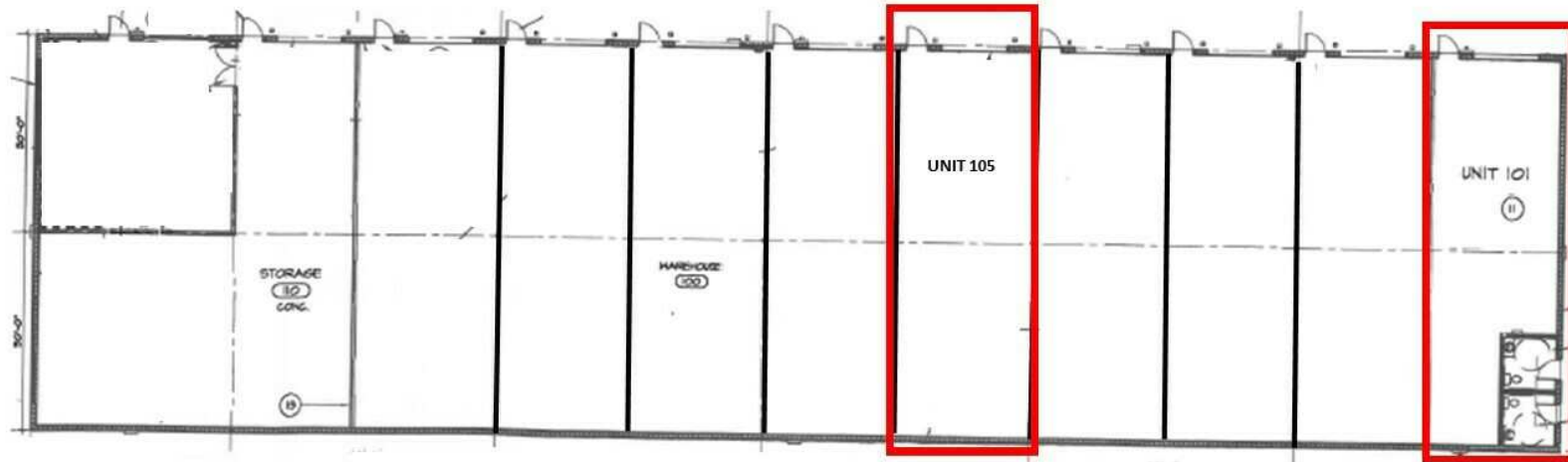
2150 East Highland Avenue, Suite 207, Phoenix, AZ 85016
602.955.3500 | cutlercommercial.com

2823 NORTH 36TH AVENUE

Phoenix, AZ 85009



Site Plans (Not To Scale)



ROD CROTTY

Associate Broker | 602.386.1225 (D)
rcroty@cutlercommercial.com

CUTLER COMMERCIAL

2150 East Highland Avenue, Suite 207, Phoenix, AZ 85016
602.955.3500 | cutlercommercial.com

NOTE: ALL DIMENSIONS ARE APPROXIMATE AND THE SITE PLAN/FLOOR PLAN IS NOT TO SCALE

All information furnished is from sources deemed reliable. No representation is made as to the accuracy thereof and it is submitted subject to errors, omissions, changes, or withdrawal without notice and to any special listings conditions, including the rate and manner of payment of commissions for particular offerings imposed by principals or agreed to by the company, the terms of which are available to interested principals or brokers. All dimensions are approximate. Owner and/or Broker make no representations expressed or implied as to the accuracy of floor plan/site plan dimensions.