

421 E 12th St

EAST VILLAGE
NEW YORK, NY



421 E 12th St

Property Details

Location

North side of E 12th St between 1st Avenue and Avenue A

Approximate Size

Space A:

Ground Floor 1,800 SF

Lower Level 1,200 SF

Space B: 300 SF

Total 3,300 SF

Term

Negotiable

Rent

Upon request

Possession

Immediate

Site Status

New glass storefront and

whitebox space

Frontage

12ft on E 12th St

Ceiling Heights

Ground Floor 10ft

Basement 8ft 8in

Neighbors

Smor Bakery, Boris & Horton, Hearth, L-Train Vintage, Au Zataar, Solidcore, Baby Cobra Yoga, Trader Joe's

Comments

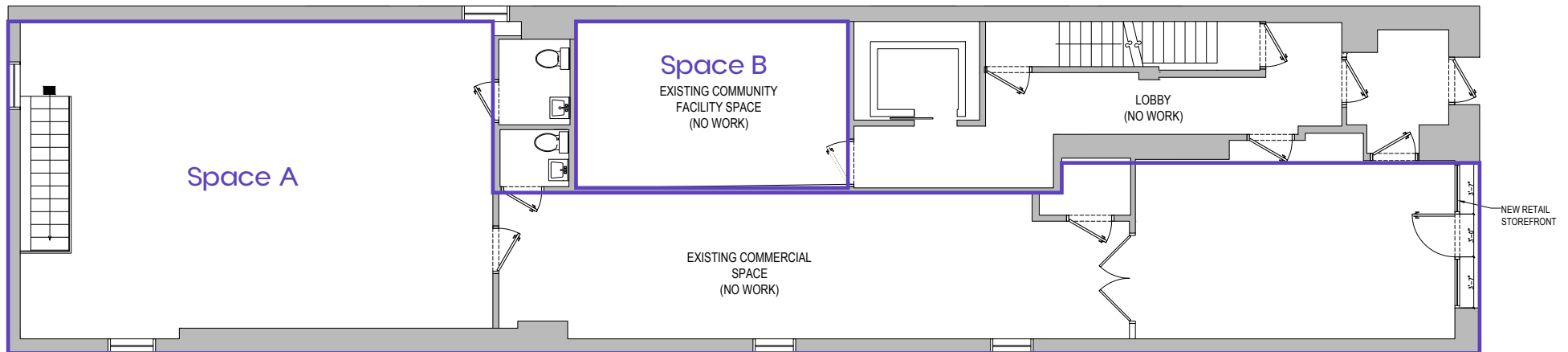
Whitebox space with new glass storefront installed.

Lower level is sprinklered with internal staircases for access at front and rear of the building.

Ideal concepts would be class-based fitness, wine bar, bookstore, tattoo studio, or art gallery.

Landlord is seeking high value concepts and willing to make improvement contributions for qualified operators.

Floor Plans



Interior Photos



Contact

Chandler Slate

M: 917-618-3707

chandler.slate@voro.com