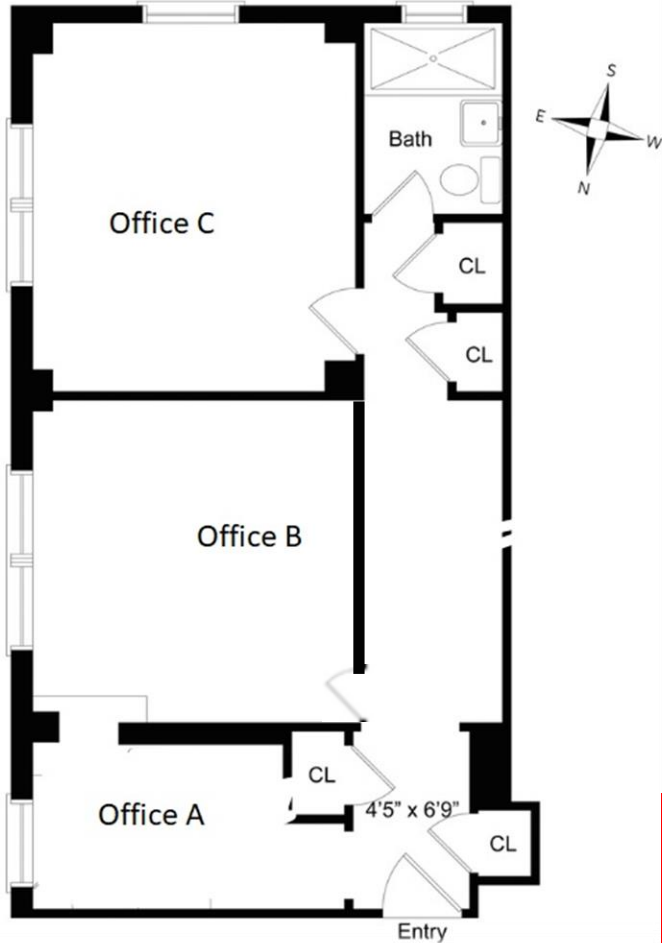


FOR LEASE

PROPERTY DETAILS

108 East 91st Street Unit 1C



All with 9' CEILINGS!

ASKING RENTS:

- A) 72 sf: RENTED
- B) 140 sf: \$1,900 per month
- C) 150 sf: \$2,100 per month

FOR MORE INFORMATION, PLEASE CONTACT:

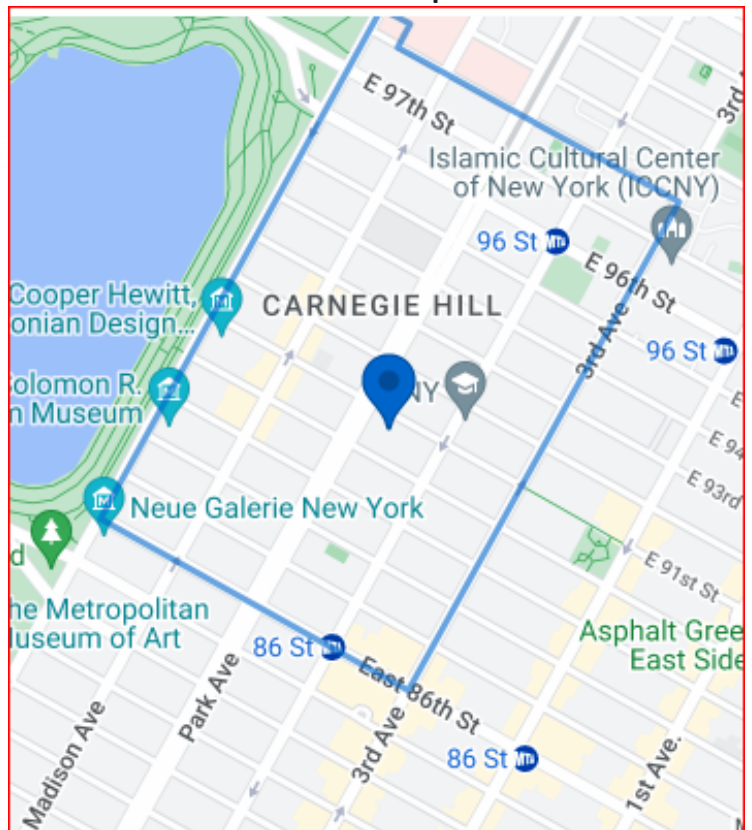


Tom Brady
Douglas Elliman
Commercial Sales and Leasing
212.572.3118
tbrady@elliman.com

108 East 91st Street is a pre-war co-op with a part-time doorman and live-in superintendent.

The building is located 2 blocks from Central Park, around the corner from the 92nd St Y and close to all the cultural institutions restaurants and other attractions the Upper East Side offers. Super close to the 86th St 4,5,6 and Second Ave Q are nearby.

Doorman hours:
Mon-Wed 11am-7pm and
Thurs-Sun 7am-11pm



108 EAST 91ST ST

OFFICE SPACES 1CA & 1CB FOR LEASE

