



500  
SANSOME

SAN FRANCISCO

# HIGHLIGHTS

24/7 secure access

Dog friendly

Secure bicycle parking

Showers

Multiple nearby parking options

11' high ceilings

Large operable windows

Exposed architectural elements

Open flexible floor plans

Built/Renovated 1929/2015

Typical Floor Size 16,443 SF

Building Height 8 Stories

2 Passenger Elevators

1 Freight Elevator

500 Sansome sits at the intersection of **Jackson Square** and the **Financial District**, offering a rare blend of historic charm and urban energy.



**100**  
WALK SCORE

**87**  
BIKE SCORE

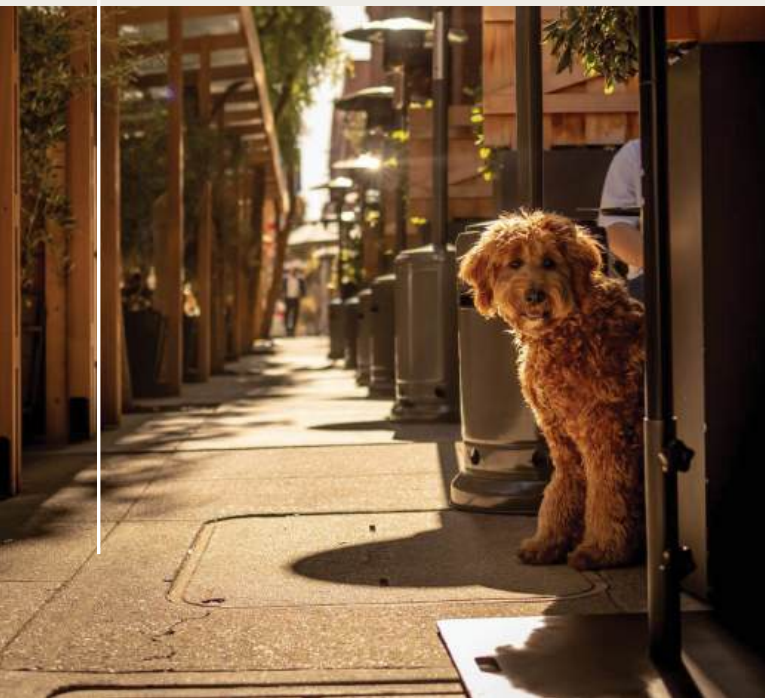
**100**  
TRANSIT  
SCORE

**10**  
MIN. WALK  
TO FERRY  
BUILDING

**10**  
MIN. WALK  
TO BART

# NEIGHBORHOOD

500  
SANSOME



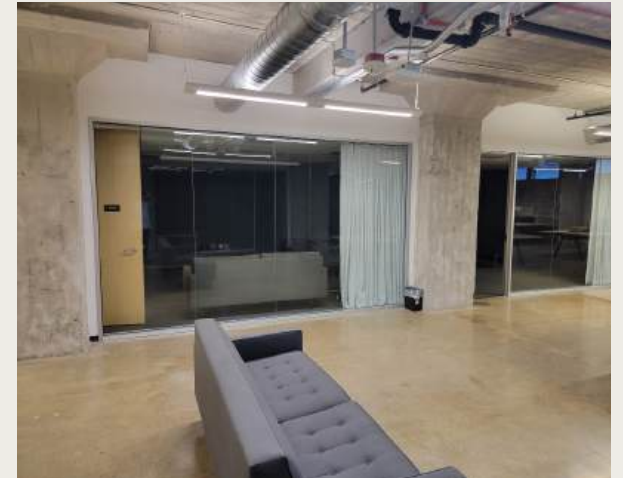
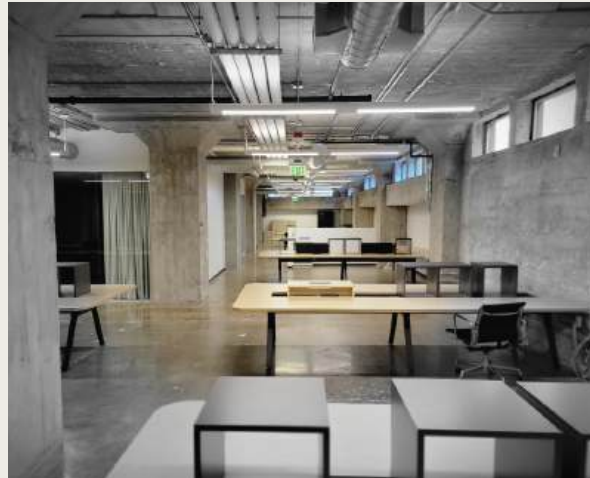
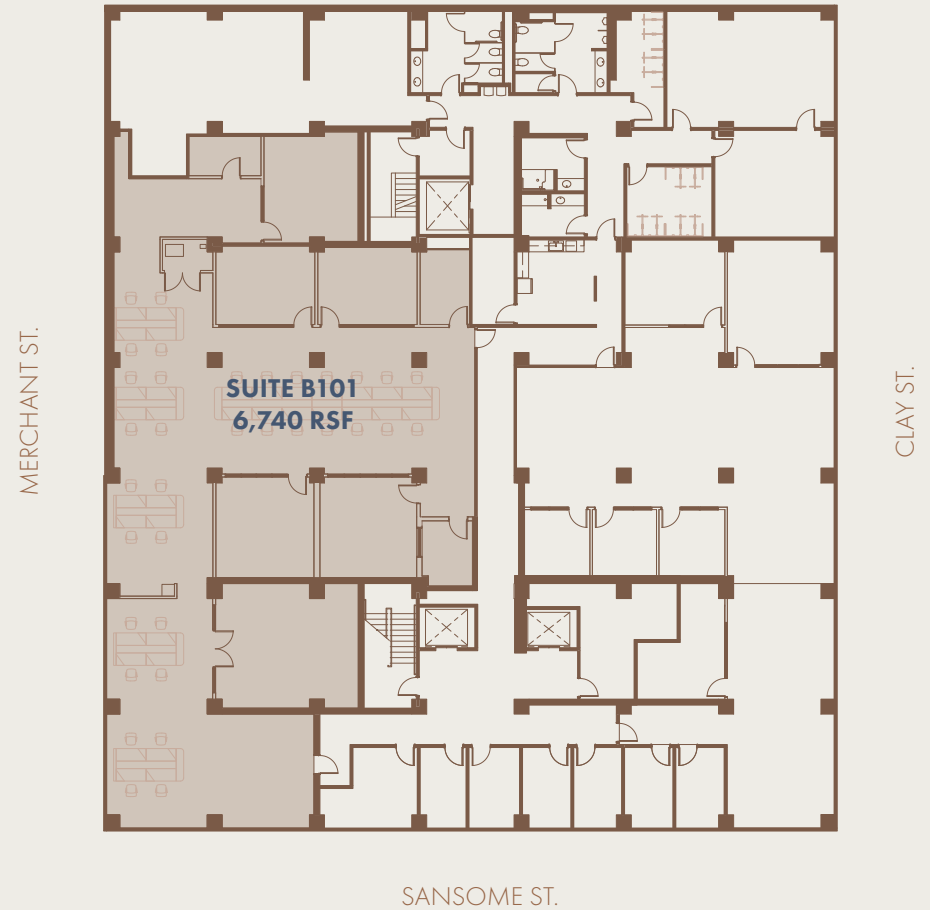
# AVAILABILITY

FLOOR	SUITE	SIZE (RSF)
BASEMENT	B-101	6,740
<b>2ND FLOOR</b>	<b>FULL FLOOR</b>	<b>17,101</b>
2ND FLOOR	200	13,610
2ND FLOOR	220	3,491
3RD FLOOR	300	5,549
3RD FLOOR	350	7,713
4TH FLOOR	460	6,471
5TH FLOOR	510	5,029
5TH FLOOR	512	1,264
6TH FLOOR	614	3,791
6TH FLOOR	615	4,902
<b>7TH FLOOR</b>	<b>FULL FLOOR</b>	<b>16,093</b>
7TH FLOOR	700	11,671
7TH FLOOR	750	4,422

# SUITE B101

AVAILABLE 6,740 RSF

*Partially furnished, creative office space with exposed ceilings, polished concrete floors, private offices and conference rooms.*



# 2nd FLOOR

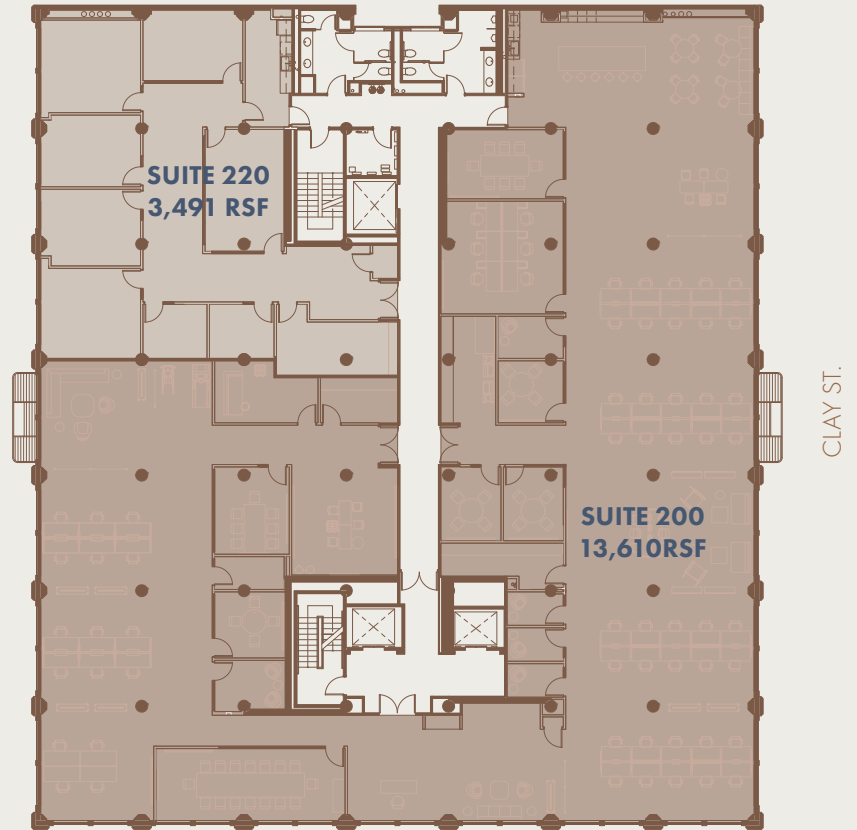
AVAILABLE FULL FLOOR 17,101 RSF

## SUITES

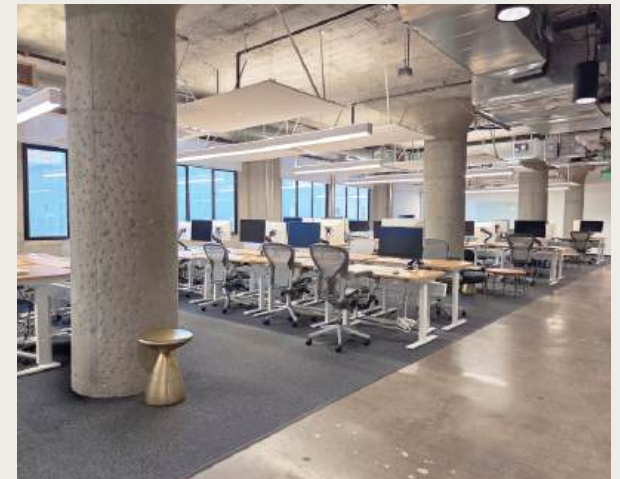
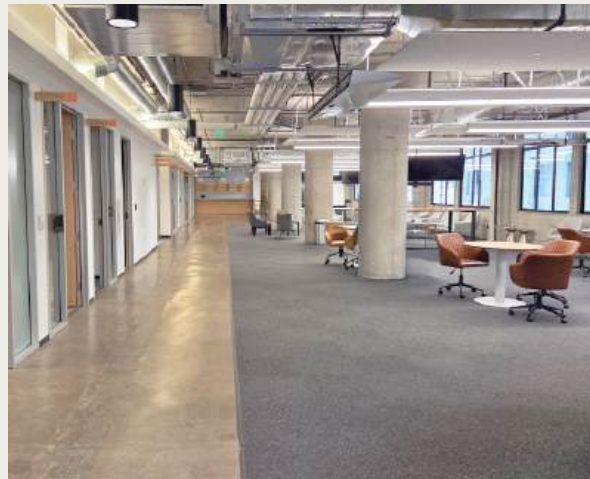
AVAILABLE	200	13,610 RSF
AVAILABLE	220	3,491 RSF

*Opportunity to combine two suites for a full floor space. Suite 200 is fully furnished, move-in ready, offering easy expansion into Suite 220. Both suites have exposed 11' high ceilings, polished concrete / carpeted floors, and large operable double pane windows.*

MERCHANT ST.



SANSOME ST.

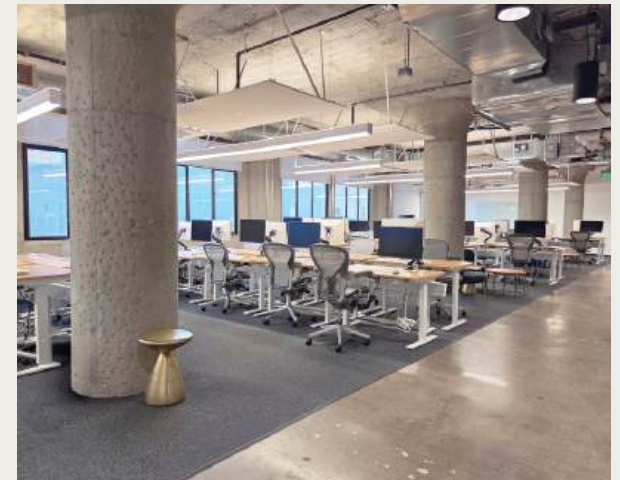
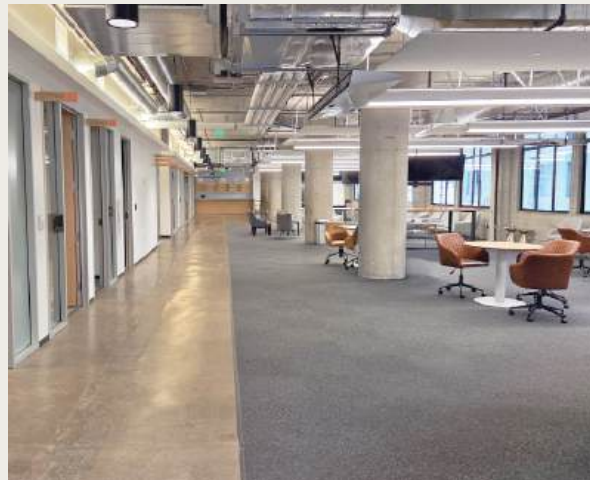
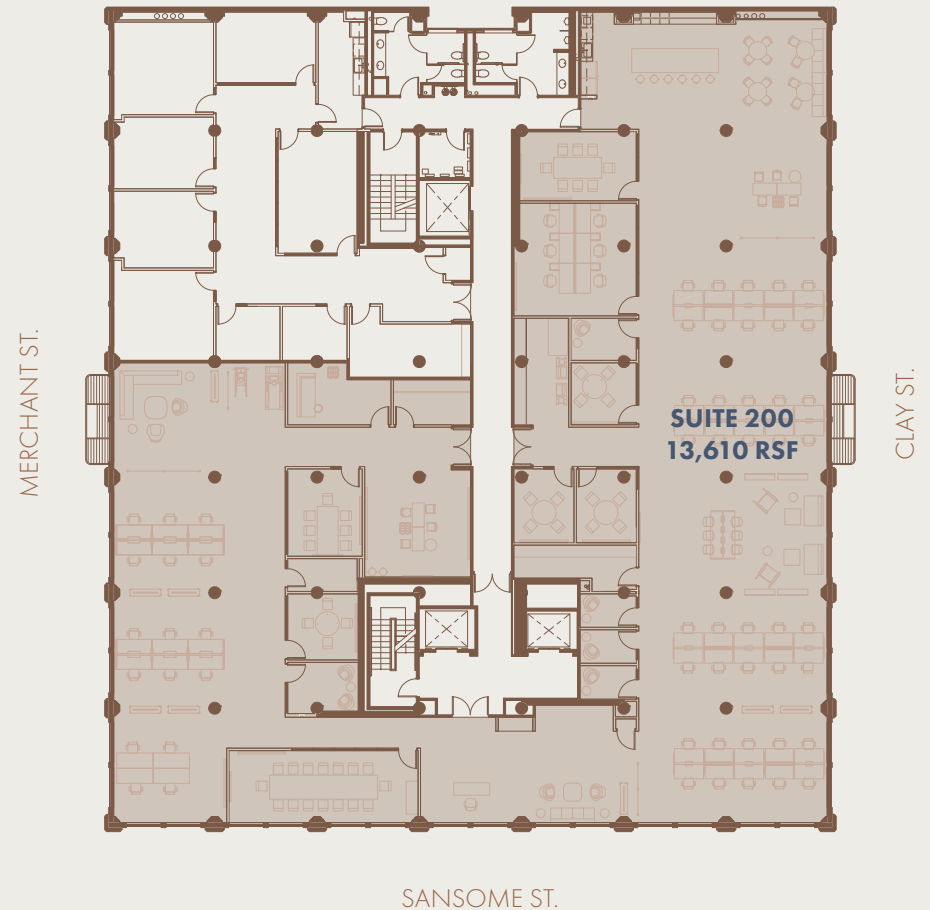


# SUITE 200

AVAILABLE 13,610 RSF

Move-in ready, fully furnished creative office space with exposed 11' high ceilings, polished concrete / carpeted floors, expansive kitchen and large operable double pane windows.

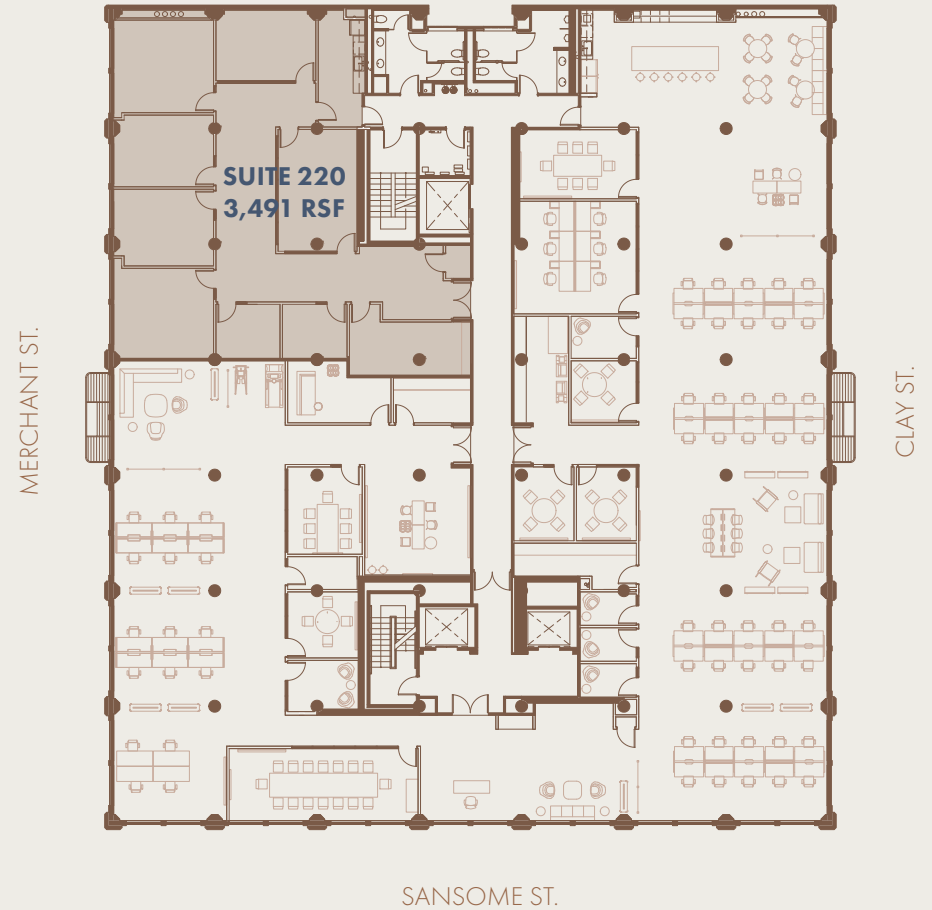
The open floor plan offers exposure to the north, west and south. A wide range of private office spaces and conference rooms line the interior.



# SUITE 220

AVAILABLE 3,491 RSF

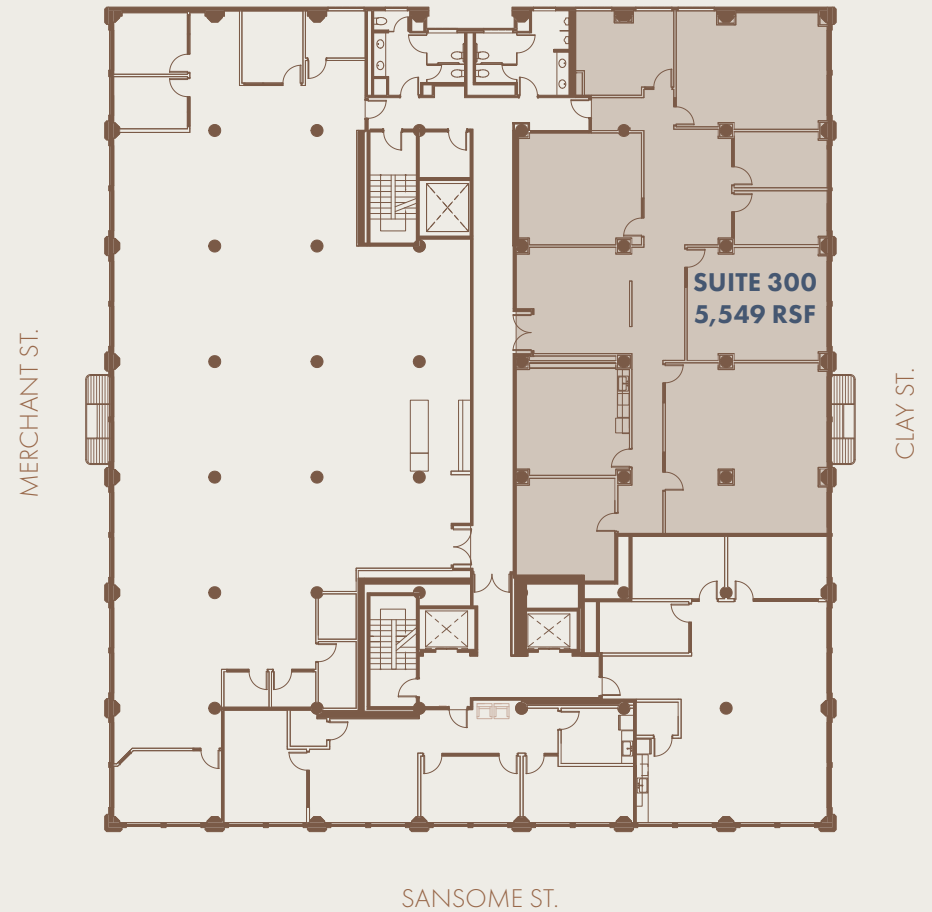
*Creative office space with exposed 11' high ceilings, polished concrete / carpeted floors, kitchen and large operable double pane windows.*



# SUITE 300

AVAILABLE 5,549 RSF

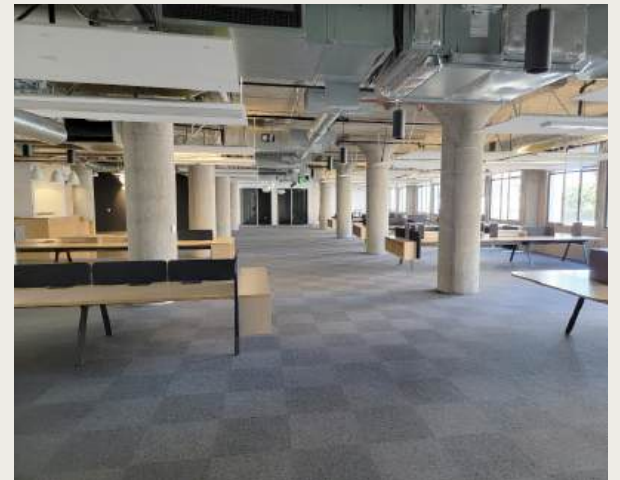
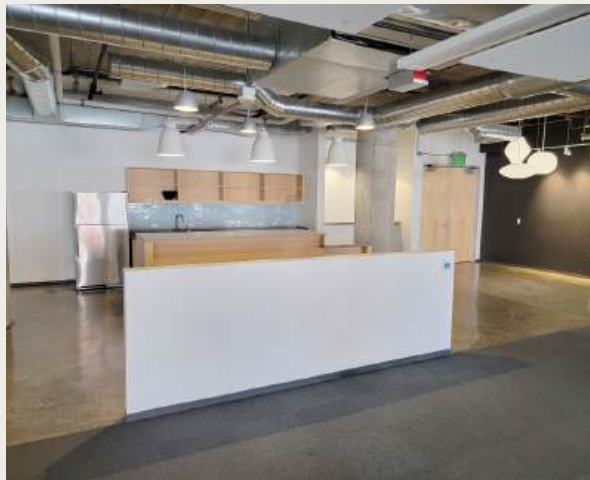
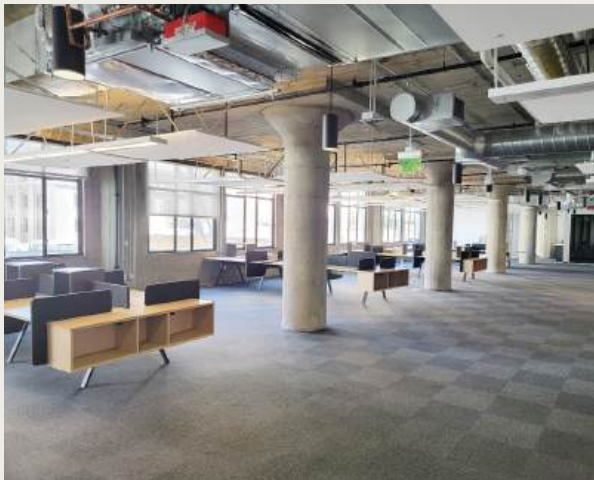
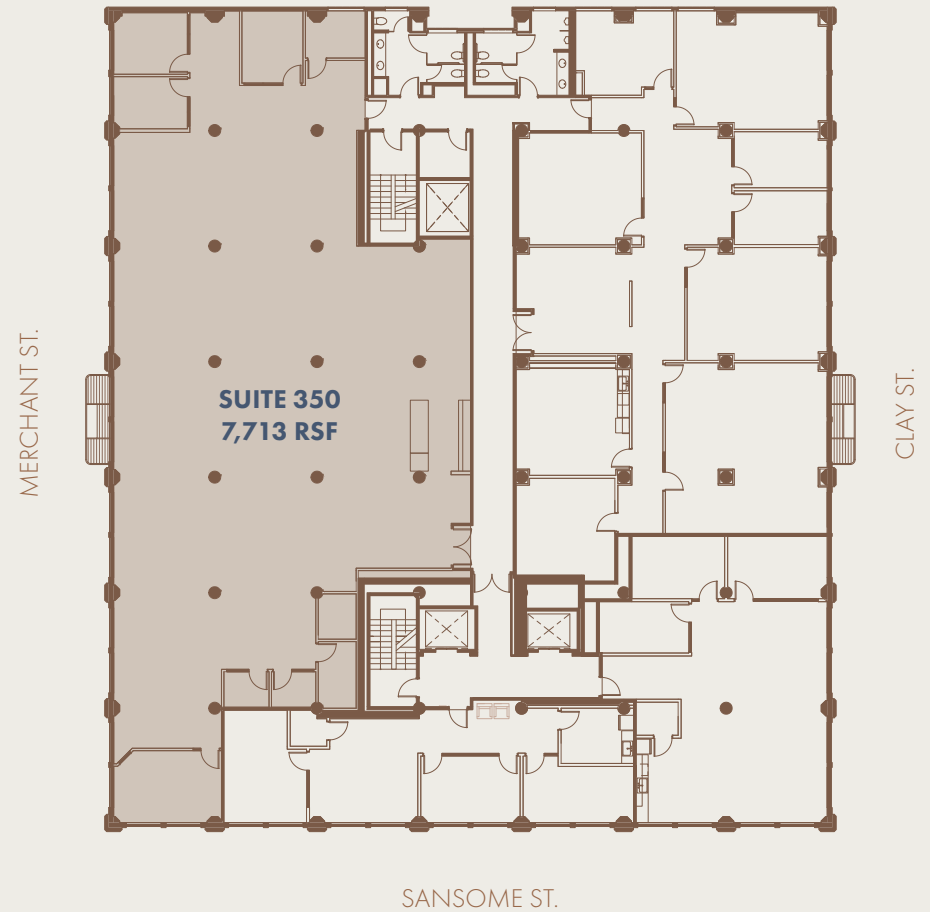
*Partially furnished creative office space with carpeted floors, expansive kitchen and large operable double pane windows.*



# SUITE 350

AVAILABLE 7,713 RSF

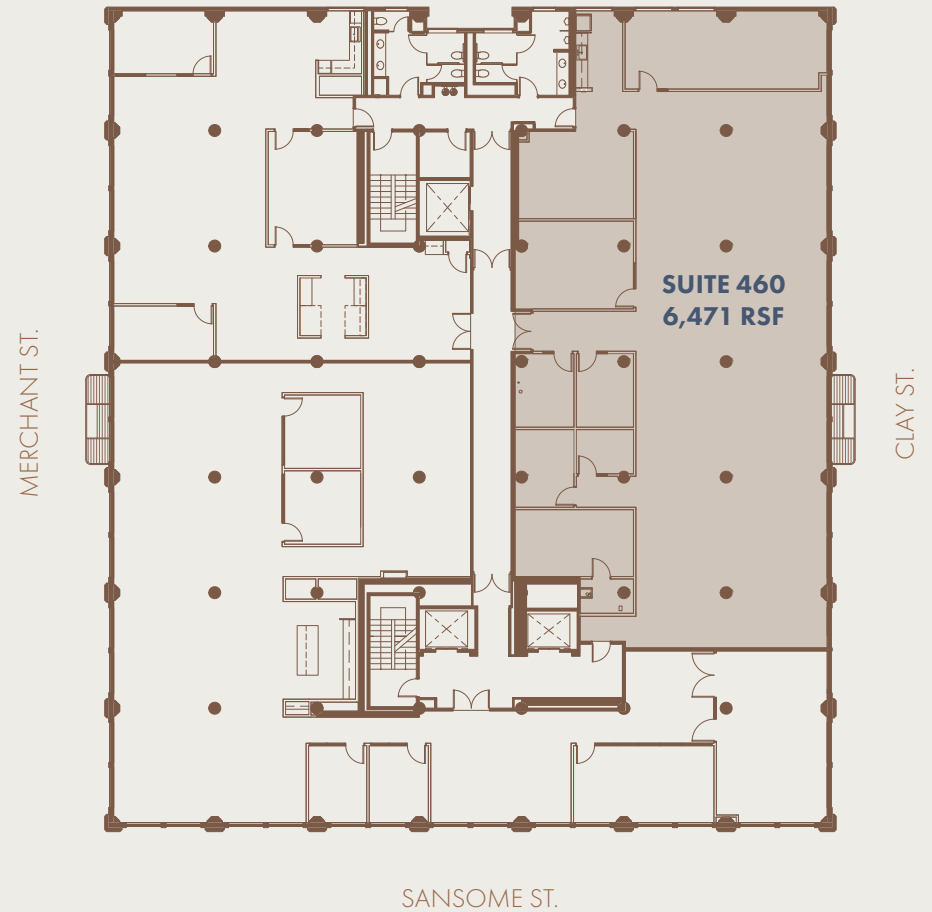
*Partially furnished creative office space with exposed 11' high ceilings, polished concrete / carpeted floors, kitchen and large operable double pane windows.*



# SUITE 460

AVAILABLE 6,471 RSF

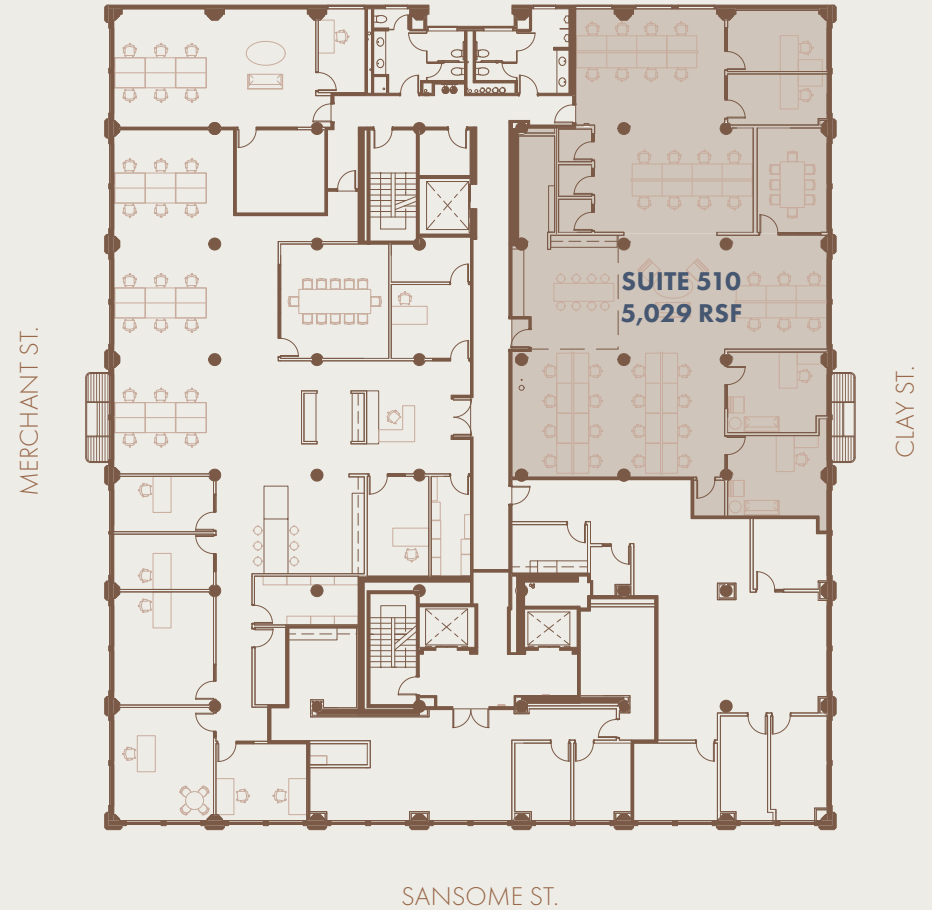
*Finished creative office space with exposed 11' high ceilings, polished concrete / carpeted floors, kitchen and large operable double pane windows.*



# SUITE 510

AVAILABLE 5,029 RSF

*Furnished creative office space with exposed 11' high ceilings, polished concrete / carpeted floors, kitchen and large operable double pane windows.*



# SUITE 512

AVAILABLE 1,264 RSF

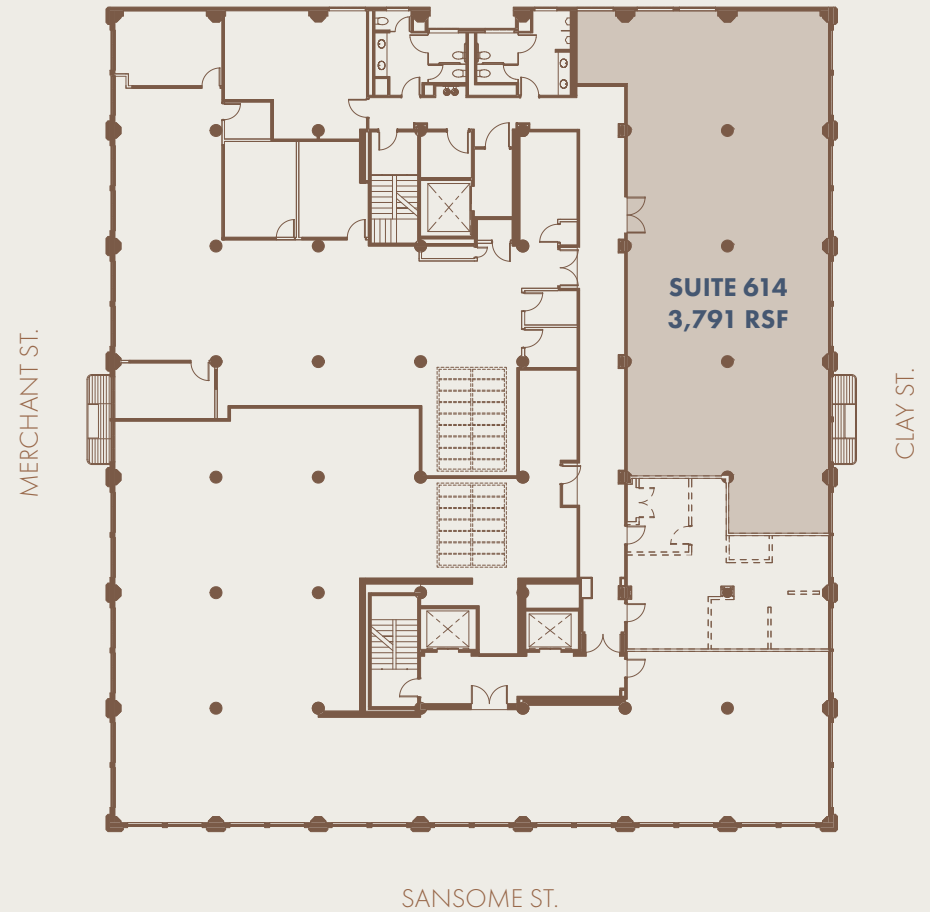
*Creative office space with exposed 11' high ceilings, polished concrete / carpeted floors, and large operable double pane windows.*



# SUITE 614

AVAILABLE 3,791 RSF

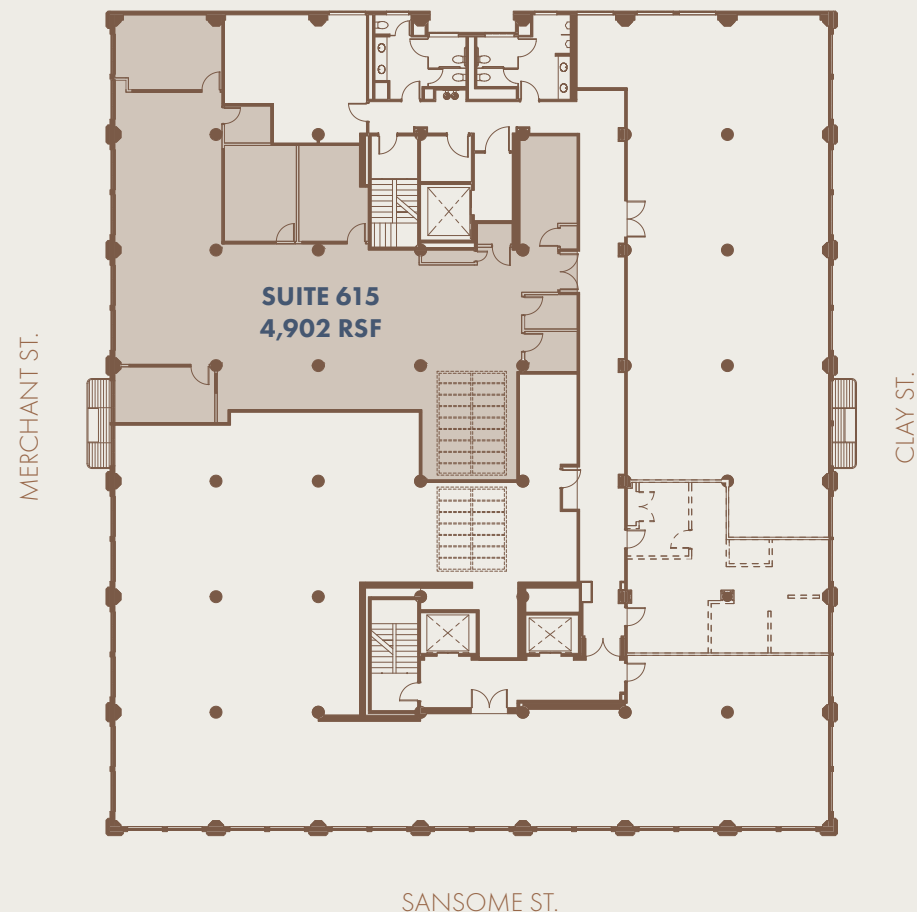
11' high ceilings with exposed architectural elements and operable double pane windows. Mechanical, electrical and plumbing are all stubbed to the space, ready for a custom tenant improvement.



# SUITE 615

AVAILABLE 4,902 RSF

*Creative office space with a skylight, exposed 11' high ceilings, polished concrete / carpeted floors, kitchen and large operable double pane windows.*



# 7th FLOOR

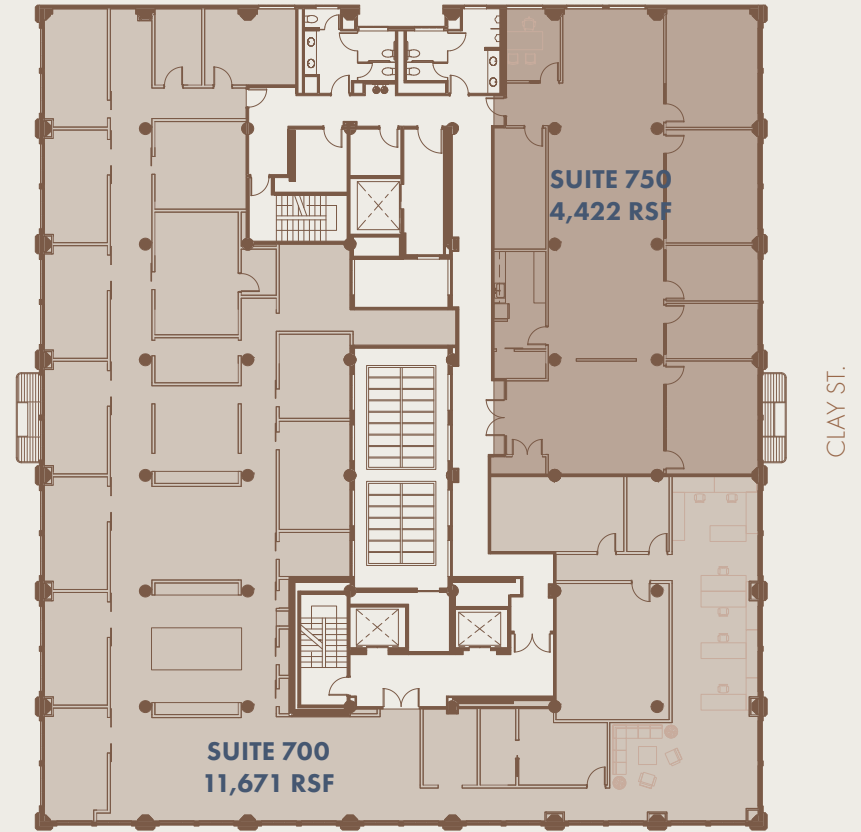
AVAILABLE FULL FLOOR 16,093 RSF

## SUITES

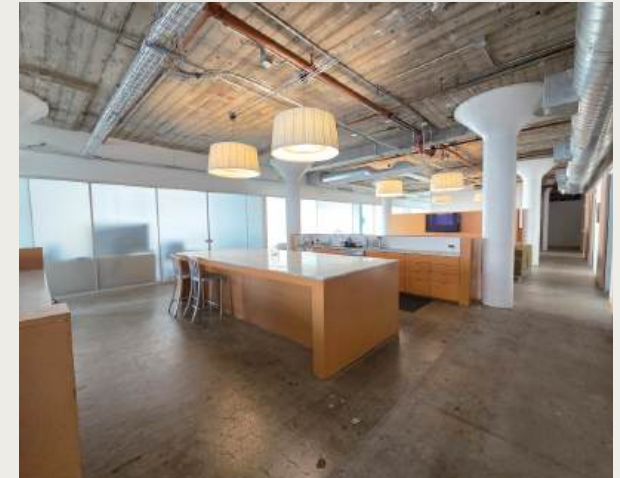
AVAILABLE	700	11,671 RSF
AVAILABLE	750	4,422 RSF

Opportunity to combine two suites for a full floor space. Offering a mix of two creative office spaces with exposed 11' high ceilings, polished concrete / carpeted floors, expansive kitchen and large operable double pane windows.

MERCHANT ST.



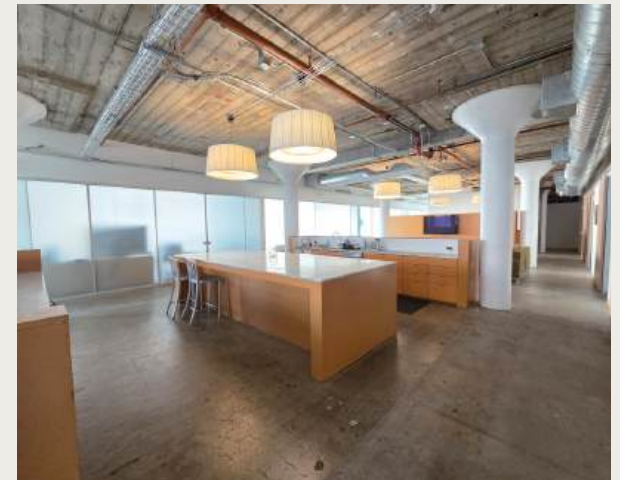
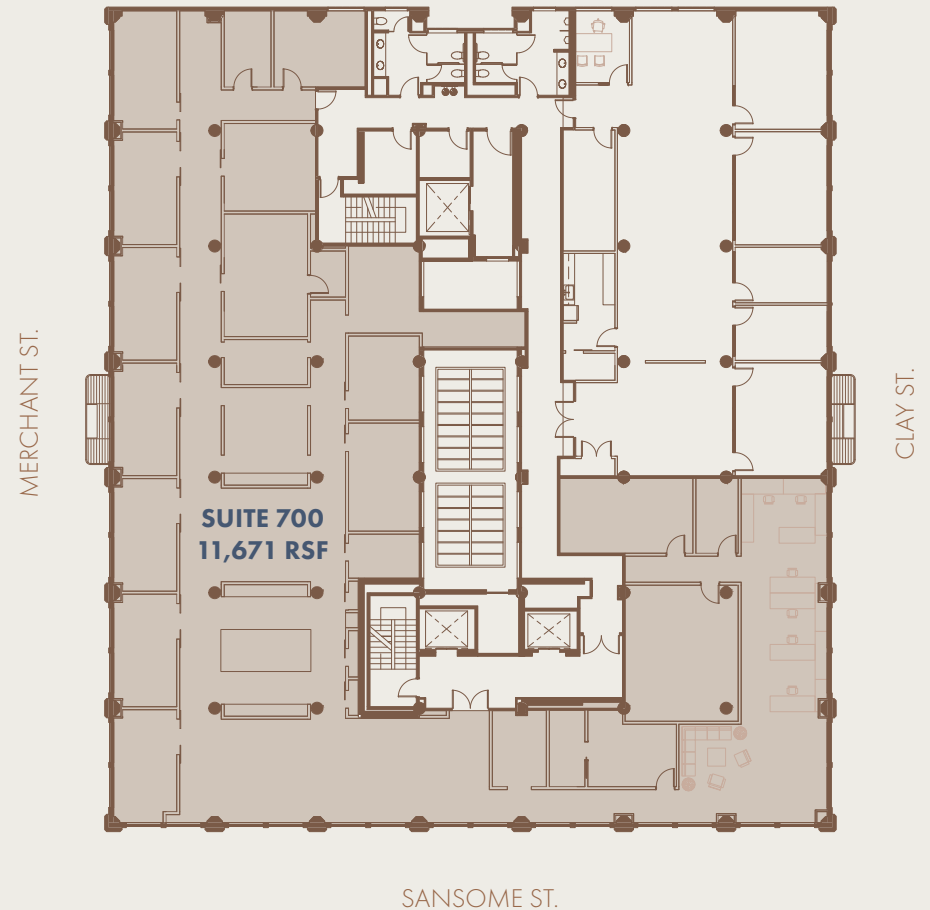
SANSOME ST.



# SUITE 700

AVAILABLE 11,671 RSF

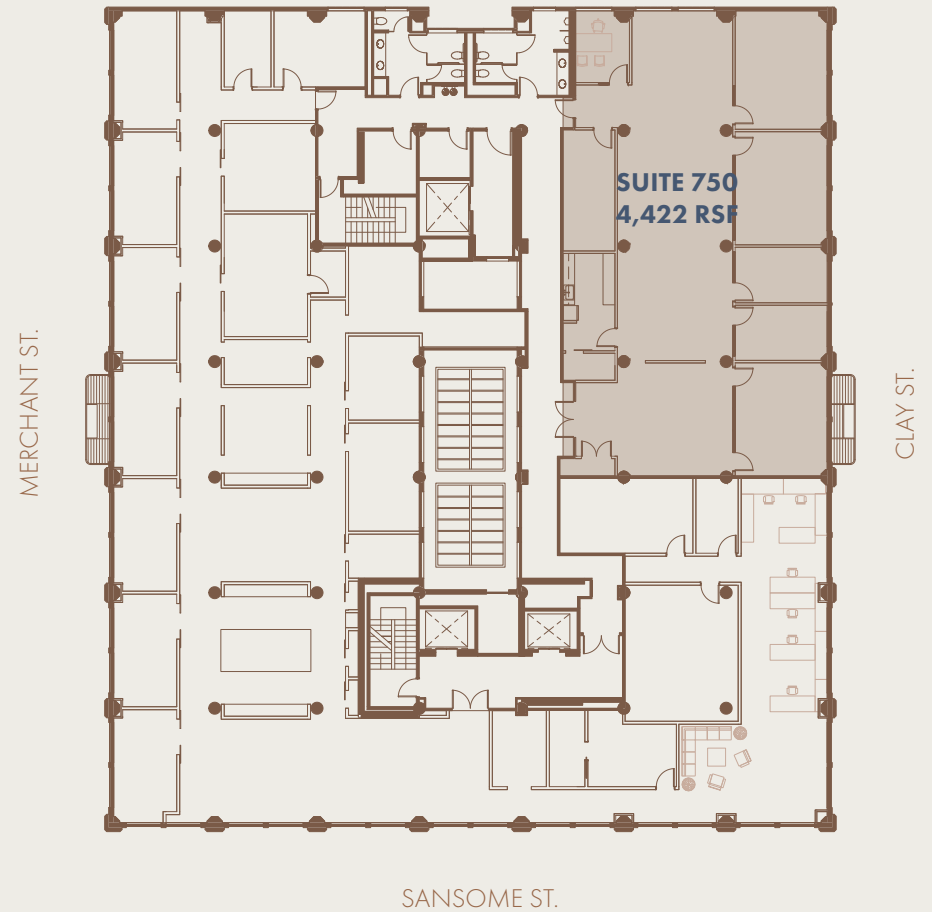
*Creative office space with exposed 11' high ceilings, polished concrete floors, expansive kitchen and large operable double pane windows.*



# SUITE 750

AVAILABLE 4,422 RSF

*Creative office space with exposed 11' high ceilings, polished concrete floors, kitchen, and large operable double pane windows. Offering an excellent mix of open office areas, private offices and conference rooms.*





# 500 SANSOME

Denise Stevens  
500 Sansome Street, LLC.  
415.380.8500  
[denises@forl.com](mailto:denises@forl.com)

*The information contained herein was produced from sources deemed reliable. It is provided without any representation, guarantee, warranty, either express or implied as to its accuracy. Any prospective tenant or broker should conduct an independent investigation to verify all matters deemed material.*