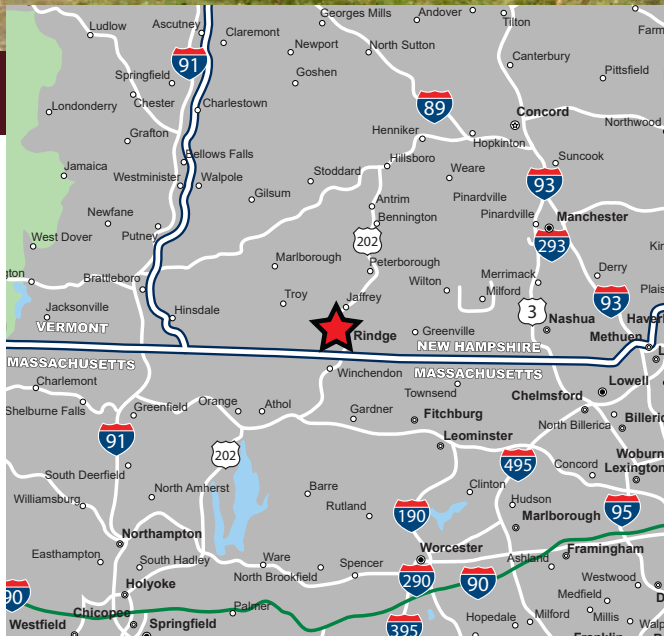


# RETAIL/PROFESSIONAL/MEDICAL OPPORTUNITY

31 Sonja Drive, Rindge, New Hampshire



**AVAILABLE FOR LEASE**

## PROPERTY HIGHLIGHTS

- » 1,614 SF Available for Lease
- » High Barrier to Entry Market
- » Signalized Access from Route 202
- » Multiple Uses Allowed
- » Ideal for Retail, Medical Office, Apothecary, Professional Office, Urgent Care, etc.
- » Co-Tenancy with Signature Smiles Dental, Monadnock Orthodontics and Savings Bank of Walpole



# RETAIL/PROFESSIONAL/MEDICAL OPPORTUNITY

31 Sonja Drive, Rindge, New Hampshire



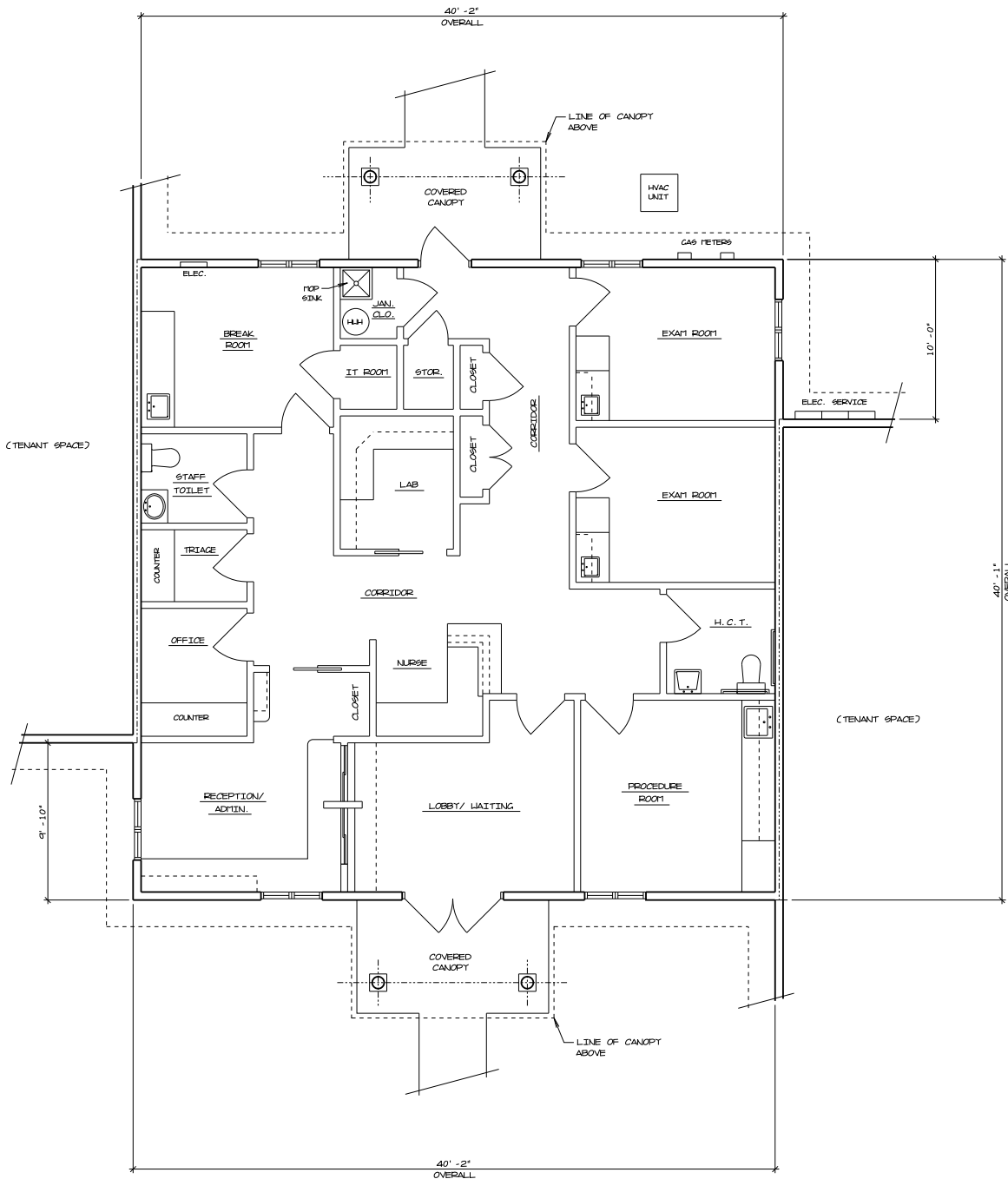
**PROPERTY INFORMATION**

Available Space	1,614 SF
GLA	9,231 SF
Property Size	3.17 Acres
Zoning	Business-Light Industry
Parking	49 Spaces

**DEMOGRAPHICS (2022 Est.)**

Radius	Population	Med. HH Inc.
3 mile	5,558	\$80,500
5 mile	16,220	\$76,344
7 mile	25,582	\$81,268



FIRST FLOOR PLAN- EXISTING CONDITIONS  
SCALE 1/4" = 1'-0"

## Retail/Medical/Professional Opportunity - 31 Sonja Drive, Rindge, New Hampshire



FOR MORE INFORMATION CONTACT:

**Sam Peterson**  
 781.849.9016  
 speterson@easternretail.com

P 781.849.9010 + F 781.849.9050 + [www.easternretail.com](http://www.easternretail.com) + 25 Braintree Hill Office Park, Suite 305 + Braintree, MA 02184

The information above has been obtained from sources believed reliable. While we do not doubt its accuracy, we have not verified it and make no guarantee, warranty or representation about it. It is your responsibility to independently confirm its accuracy and completeness. Any projections, opinions, assumptions or estimates used are for example only and do not represent the current or future performance of the property. The value of this transaction to you depends on tax and other factors, which should be evaluated by your tax and financial advisors. You and your advisors should conduct a careful, independent investigation of the property to determine to your satisfaction, the suitability of the property for your needs.