



Meridia Lafayette

Class-A Mixed-Use Construction

Ground Floor Retail and 117 Luxury Apartments

1555 Main Street, Rahway

Union County, NJ 07065

PROPERTY DESCRIPTION

Meridia Lafayette is an existing 177-unit apartment community located along Main Street in Rahway, NJ, a community that has experienced significant growth and transformation over the past ten years. The revitalization of downtown Rahway has introduced over 1,000 luxury multifamily units, solidifying its position as a thriving transit hub for modern urban living. Designed to seamlessly integrate residential comfort with urban accessibility, Meridia Lafayette offers approximately 2,500 square feet of ancillary ground-floor retail space, with only one retail unit of 1,255 SF remaining, this is a unique opportunity to join a dynamic community in one of Rahway's most vibrant corridors. Surrounded by a rapidly growing residential base, and within walking distance from Rahway's New Jersey Transit train station, Meridia Lafayette presents an opportunity to thrive within a flourishing and increasingly sought-after market.

AVAILABLE SPACE

Unit 2: +/-1,255 SF

RENTAL RATES

Upon request, subject to use and creditworthiness

TRAFFIC COUNT

4,978 VPD along Main Street

PARKING

Street Parking along Main Street

**FOR ADDITIONAL INFORMATION
CONTACT EXCLUSIVE LEASING AGENT**

David Greenman

Sr. VP Retail Services

908.604.6900 Ext. 106

dgreenman@silbertrealestate.com

SILBERT

152 Liberty Corner Road

Suite 203

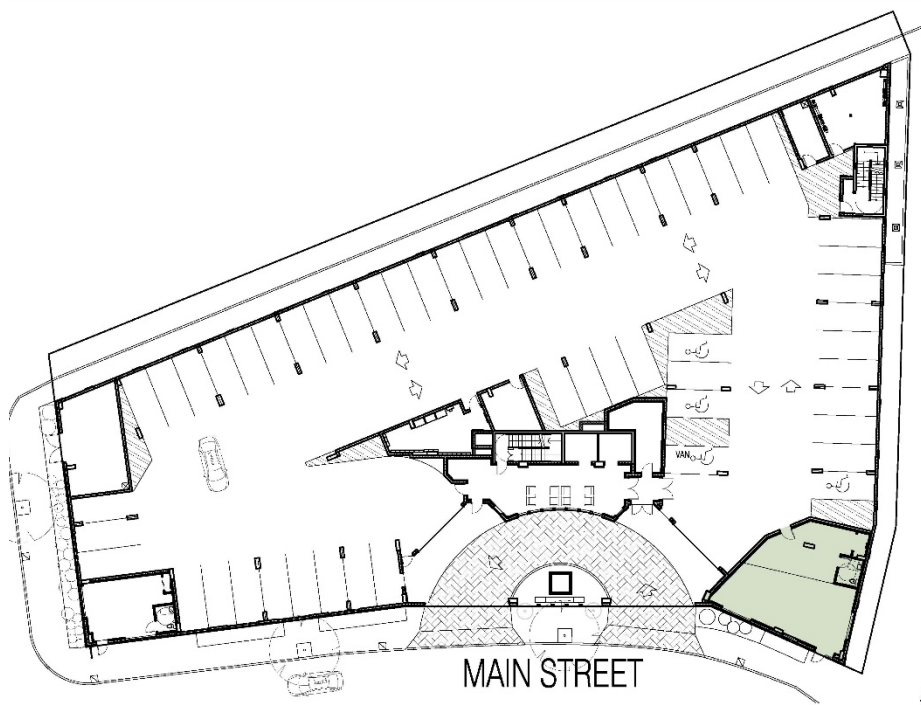
Warren, NJ 07059

REALTY & MANAGEMENT COMPANY, INC.

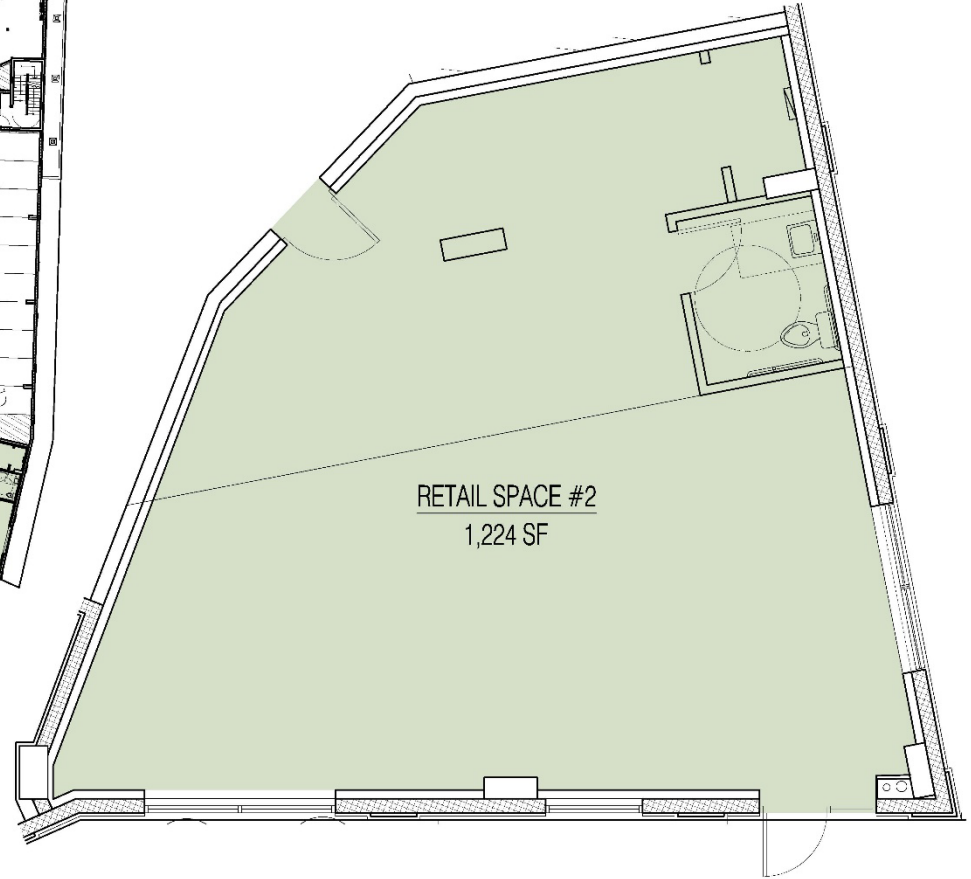


Visit Our Website: WWW.SilbertRealEstate.com

UNIT 2 FLOOR PLAN

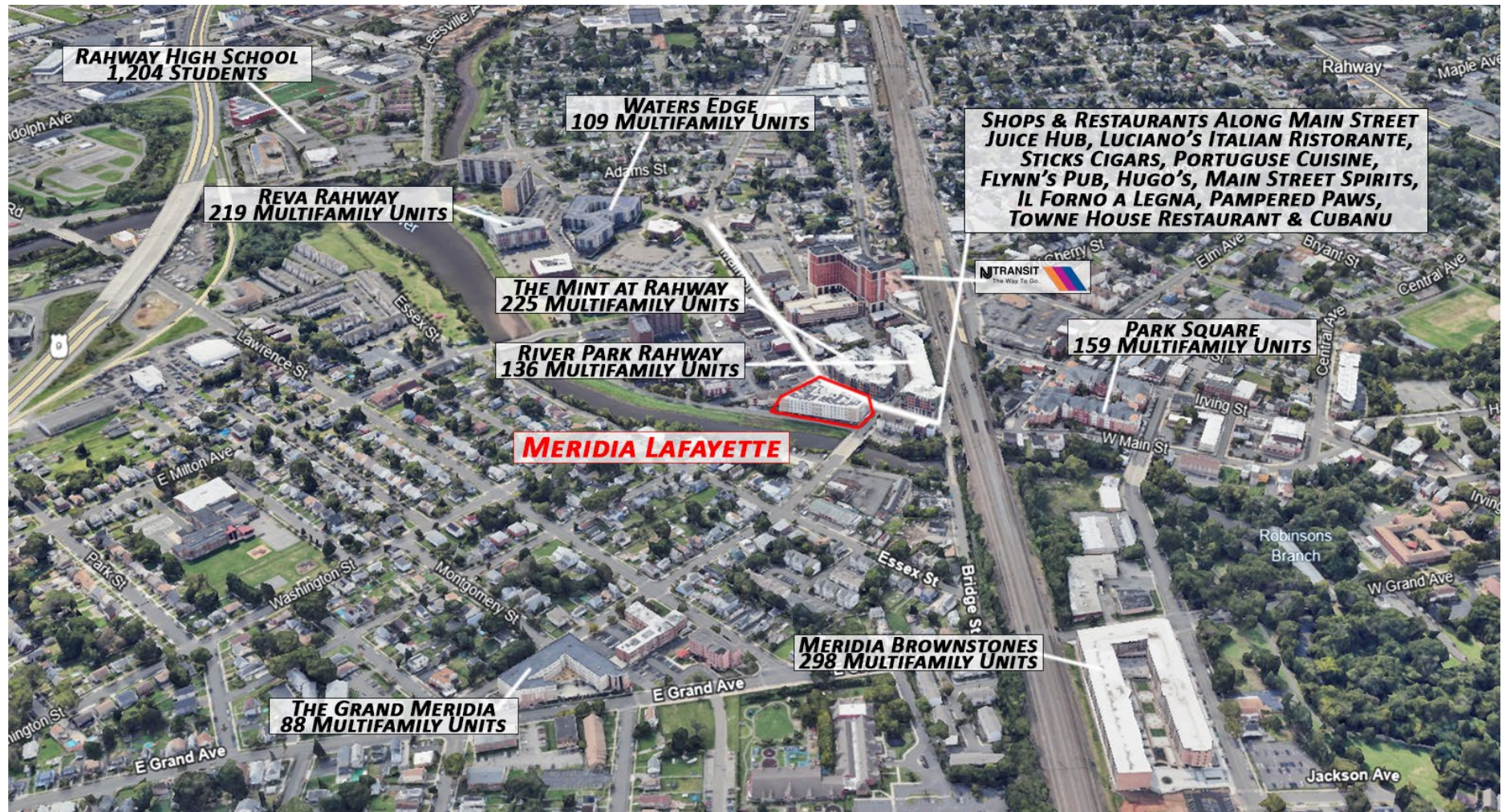


KEY PLAN



| | |
|-------------------------|----------|
| RETAIL AREA (LEASABLE): | |
| RETAIL SPACE #2 | 1,224 SF |
| GROSS LEASABLE AREA | 1,224 SF |

PROPERTY AERIAL



AREA DEMOGRAPHICS

1 Mile Radius

| | |
|--------------------|-----------|
| Population | 22,484 |
| Median HH Income | \$85,654 |
| Average HH Income | \$106,577 |
| Median Age | 38.0 |
| Total Households | 9,333 |
| Daytime Population | 15,129 |

2 Mile Radius

| | |
|--------------------|-----------|
| Population | 68,788 |
| Median HH Income | \$95,776 |
| Average HH Income | \$120,513 |
| Median Age | 39.2 |
| Total Households | 26,057 |
| Daytime Population | 50,869 |

3 Mile Radius

| | |
|--------------------|-----------|
| Population | 138,988 |
| Median HH Income | \$103,124 |
| Average HH Income | \$126,712 |
| Median Age | 39.9 |
| Total Households | 51,763 |
| Daytime Population | 100,854 |

