

NEWMARK

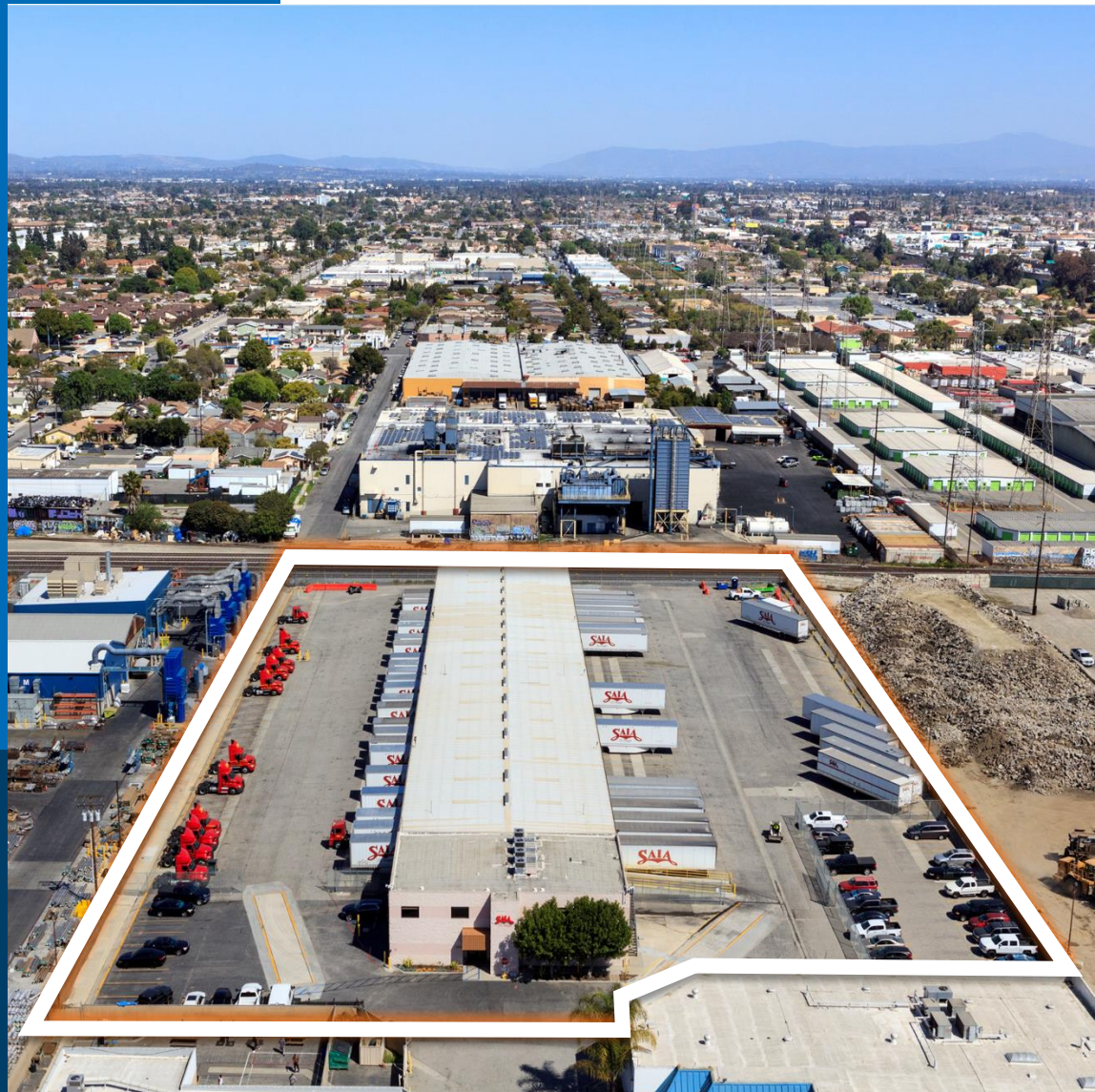
2250  
E 69th Street

LONG BEACH, CA 90805

PORT ADJACENT  
TRUCK TERMINAL

AVAILABLE | 66 DH ON 4.35 AC

SOUTHLAND MARKET | SOUTH BAY



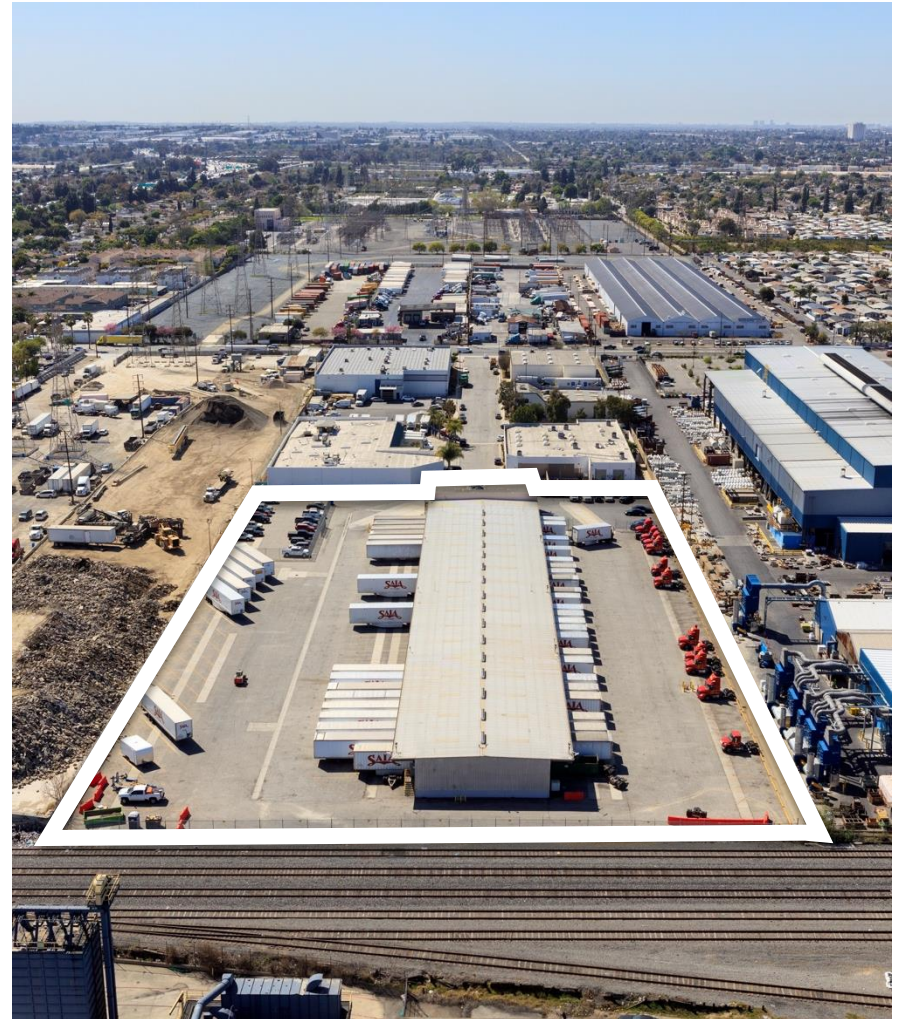
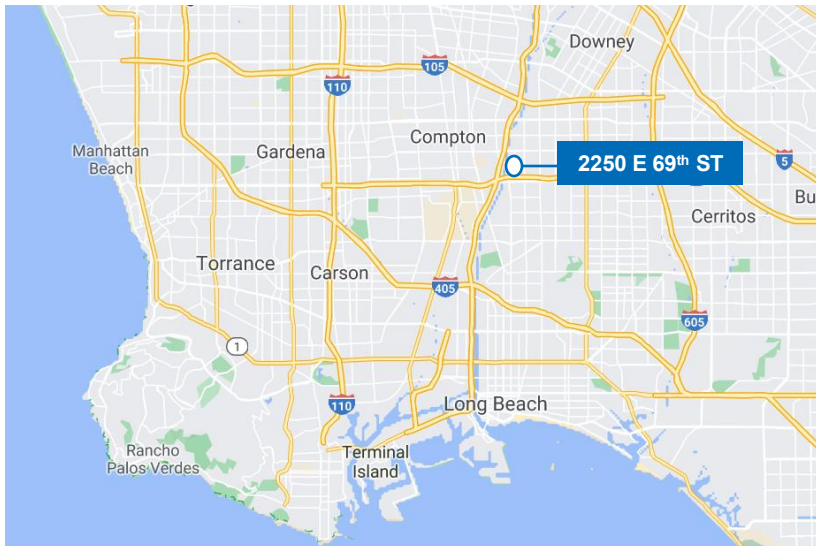
NMRK.COM



# Property Details

2250 E 69<sup>TH</sup> ST, LONG BEACH, CA

Building	33,649 SF
Land	189,034 SF   4.35 AC
Office SF	8,076 SF
DH	66
Truck Courts	105' (N), 150' (S)
Distance to LA / Long Beach Ports	11 Miles





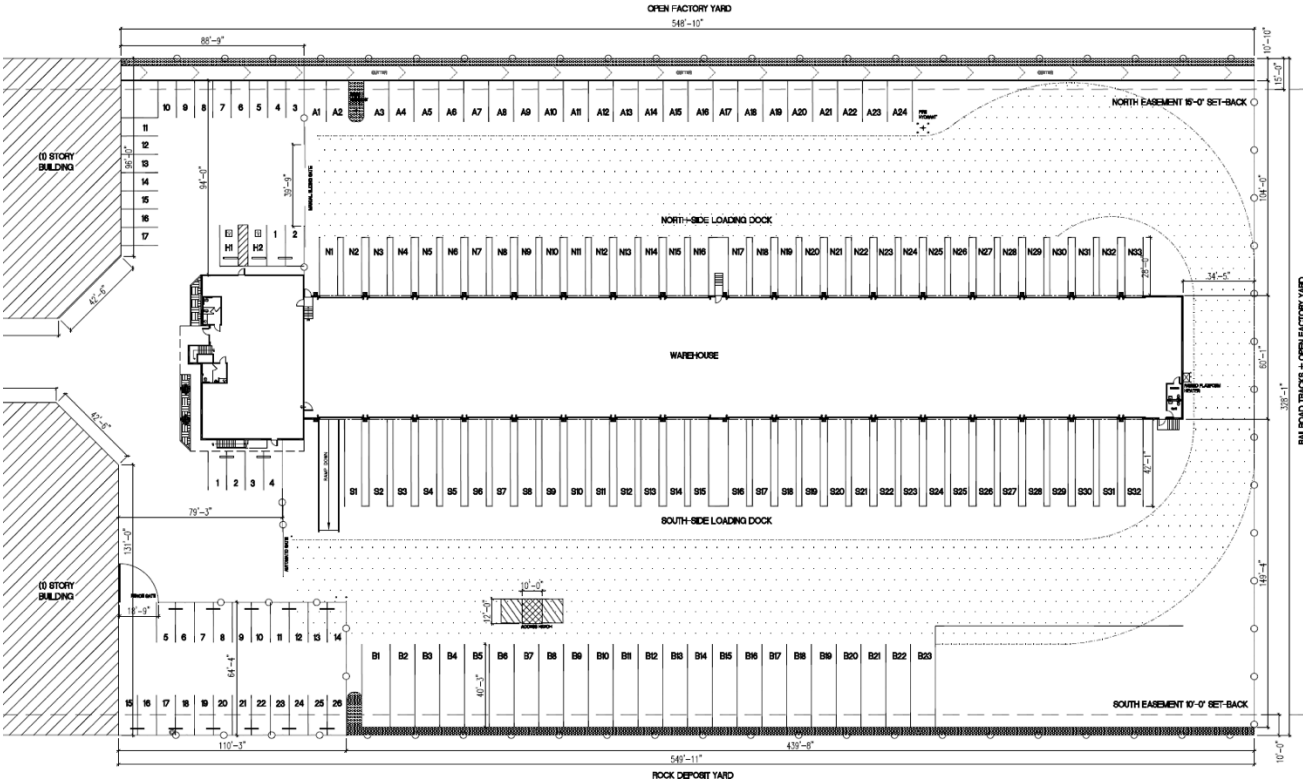
# Property Aerials

2250 E 69<sup>TH</sup> ST, LONG BEACH, CA



# Site Plan

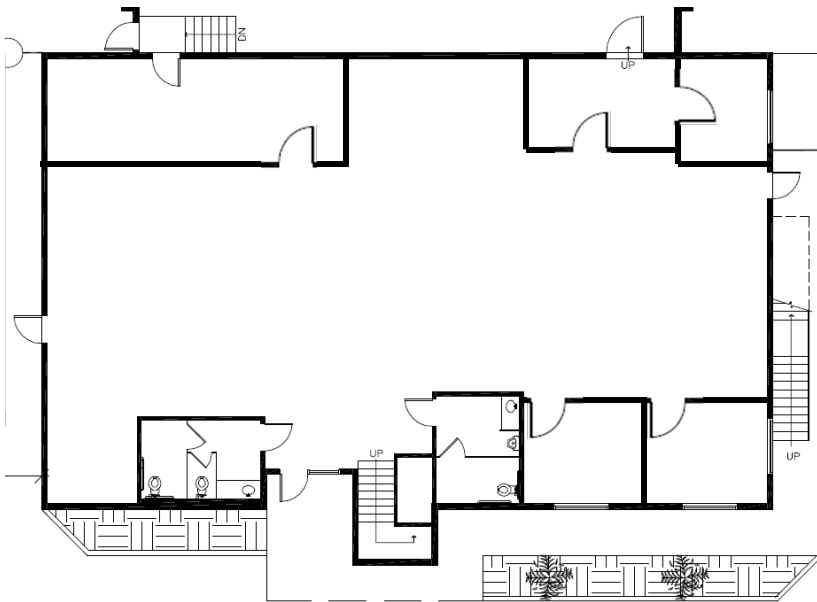
2250 E 69<sup>TH</sup> ST, LONG BEACH, CA



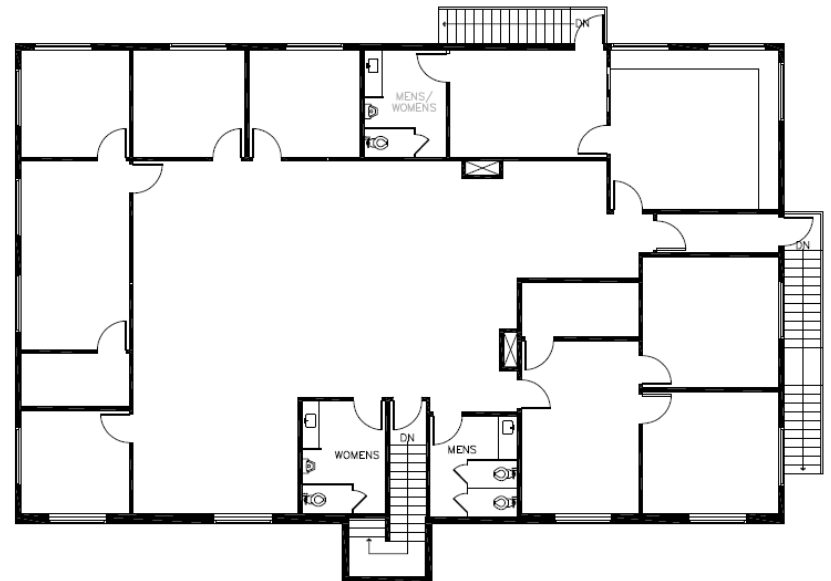
Site Plan Information	
Measured Lot Size	189,034 SF
Measured Lot Coverage	16%
Parking	157
Building Area (By Floor)	
1 <sup>st</sup>	4,020 SF
2 <sup>nd</sup>	4,056 SF
Warehouse	25,573 SF

# Office Layout

1<sup>ST</sup> Floor – 4,020 SF



2<sup>nd</sup> Floor – 4,056 SF







---

*Exclusively Listed By:*

**Mark Repstad**

*Executive Managing Director  
Industrial & Logistics Services*  
t 213-596-2282  
mark.repstad@nmrk.com  
CA RE Lic. #01492673

**Rob Castro**

*Associate*  
t 657-532-8400  
rob.castro@nmrk.com  
CA RE Lic. #02169325

## Industrial

Corporate License #01355491

The distributor of this communication is performing acts for which a real estate license is required. The information contained herein has been obtained from sources deemed reliable but has not been verified and no guarantee, warranty, or representation, either express or implied, is made with respect to such information. Terms of sale or lease and availability are subject to change or withdrawal without notice.

NMRK.COM

# NEWMARK