



# NORTH HILLS BUSINESS PARK

3333 New Hyde Park Road, New Hyde Park





# Space Details

Class "A" Office Space  
Leasing Opportunity

## AVAILABLE SPACES\*

*Suite 207 - 3,219 SF (Immediate)*

*Suite 310 - 5,100 SF (Feb. 1 2026)*

\*Build to Suit

## SITE DETAILS

- Newly renovated common areas including lobby, restrooms, and elevators
- Exterior parking field that surrounds the building
- Parking ratio 5:1
- On-site café with seating
- Updated landscaping



## ABOUT NORTH HILLS BUSINESS PARK

North Hills Business Park is a newly-renovated office building in New Hyde Park with approximately 160,000 SF of prime office space. The building is strategically located in the Village of North Hills, Long Island, New York, at the intersection of New Hyde Park Road and the entrances to Long Island Expressway and Northern State Parkway.

North Hills Business Park is strategically located only 20 miles to Manhattan and John F. Kennedy International Airport can be reached in under 30 minutes.

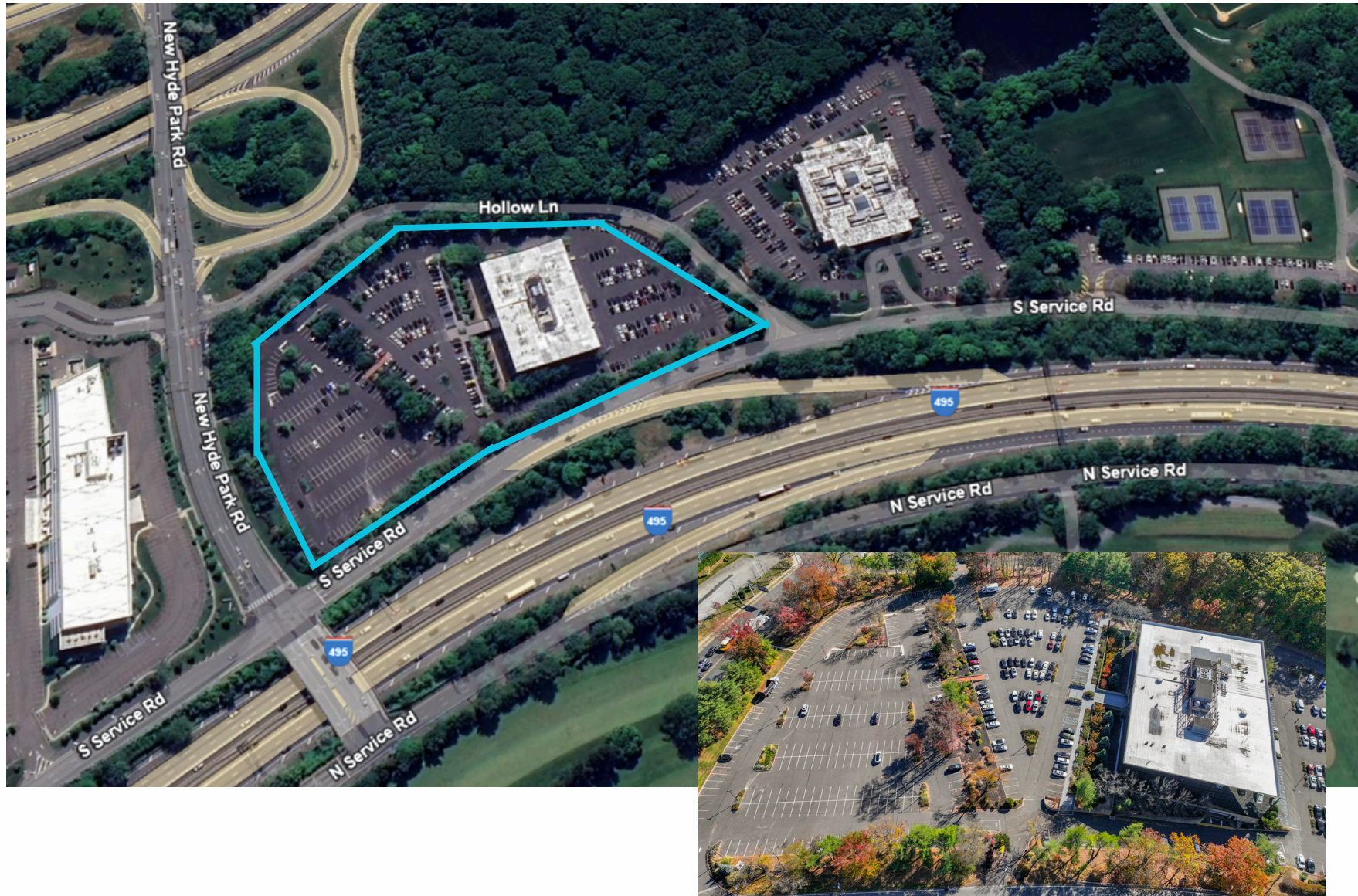


# Aerial Map





# Parking Overview





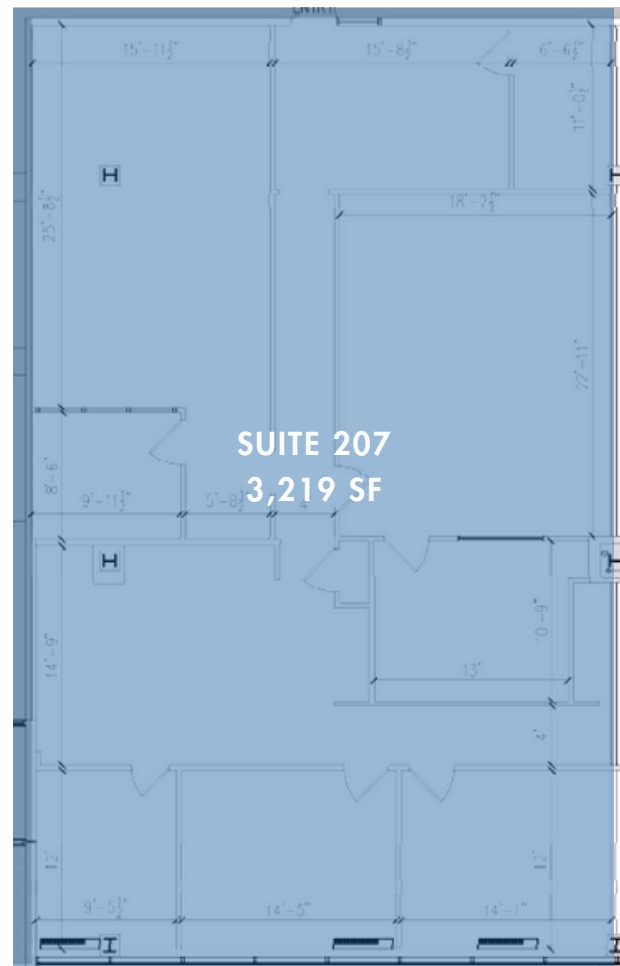
# Floor Plans

## SUITE 207

KEY PLAN



ENTRANCE



SUITE 207  
3,219 SF

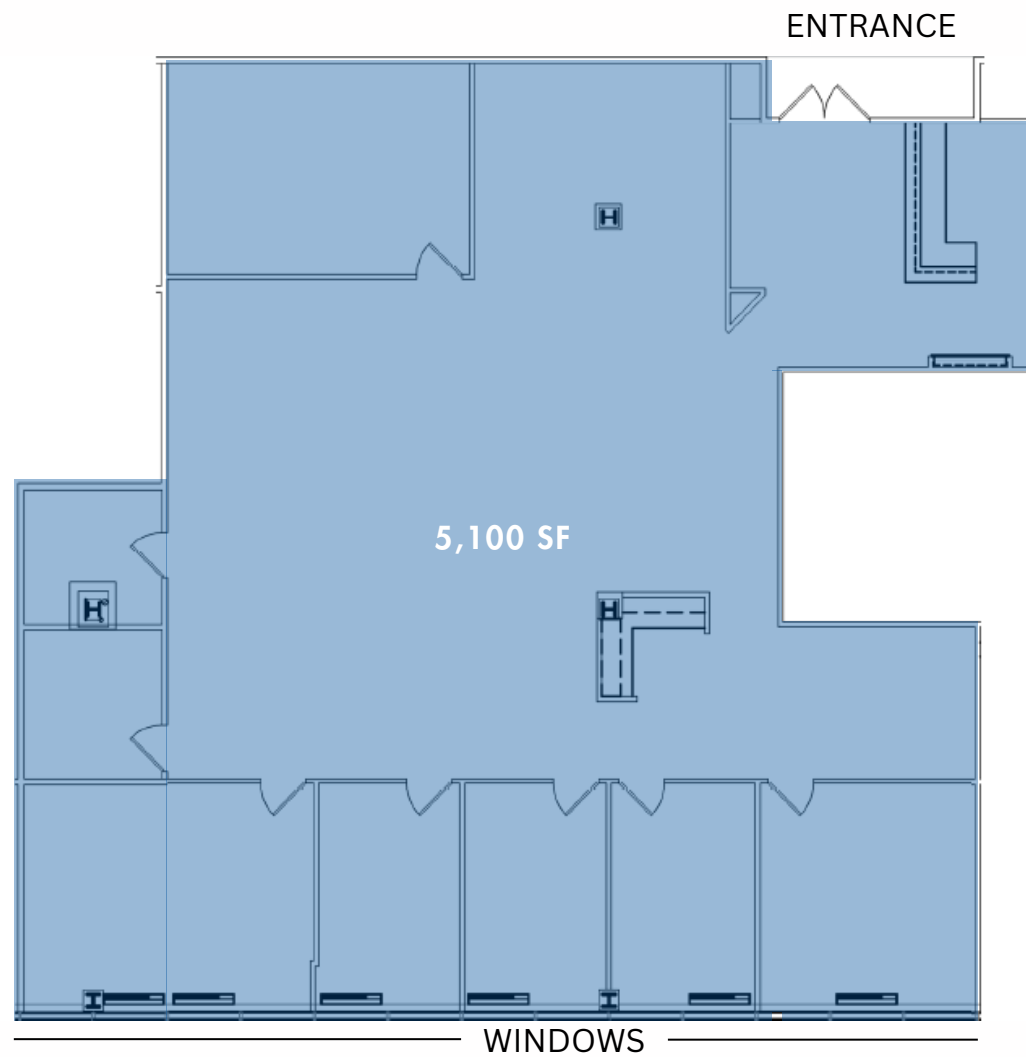
WINDOWS



# Floor Plans

## SUITE 310

### KEY PLAN

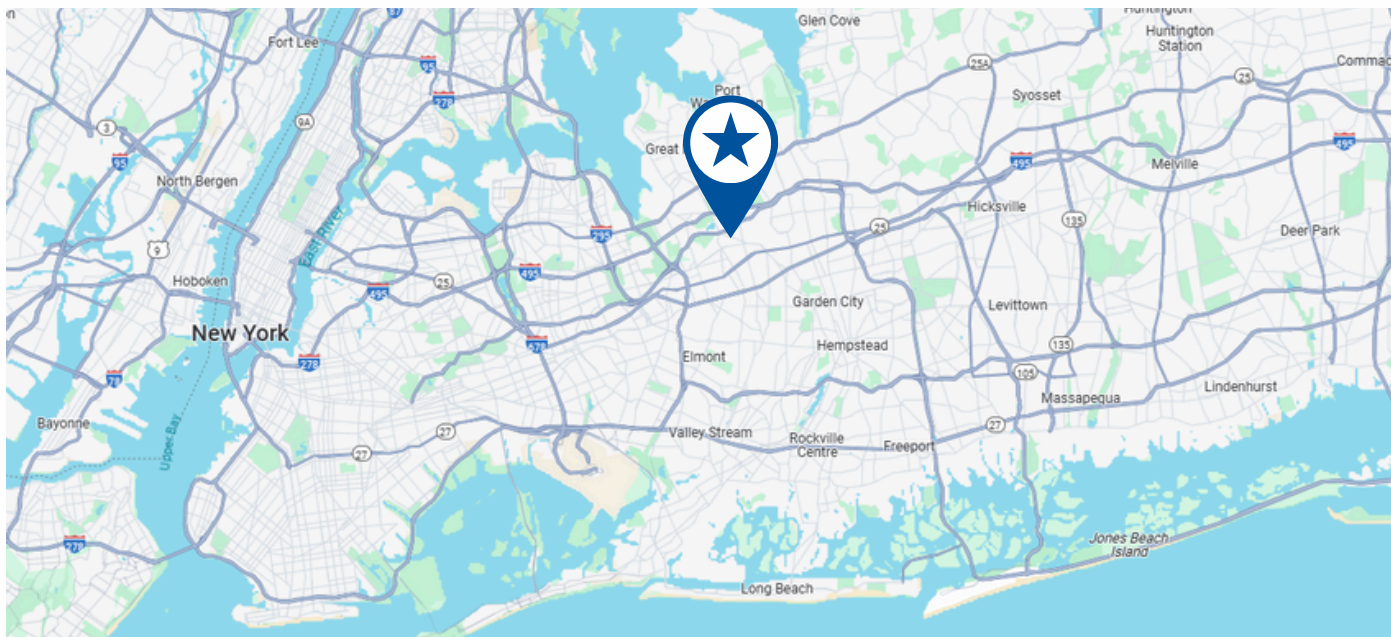




## Interior Common Area Photos







## CONTACT US

Contact us now to schedule a tour or  
learn more about our available suites

JASON MILLER



516.662.2210

516.465.0009



[jmiller@steelequities.com](mailto:jmiller@steelequities.com)

CHRISTIAN MAZZIE



631.559.7838

516.465.0138



[cmazzie@steelequities.com](mailto:cmazzie@steelequities.com)