

**CONTINENTAL
EXECUTIVE
PARK**

645-647

**LAKEVIEW PKWY
VERNON HILLS, IL**

**35,325 SF
FOR LEASE**



**CUSHMAN &
WAKEFIELD**

// PROPERTY FEATURES

 **35,325 SF SPACE AVAILABLE**

 **TO SUIT OFFICE AREA**

 **21' CLEAR HEIGHT**

 **1989 YEAR BUILT**

 **140 CAR PARKING**

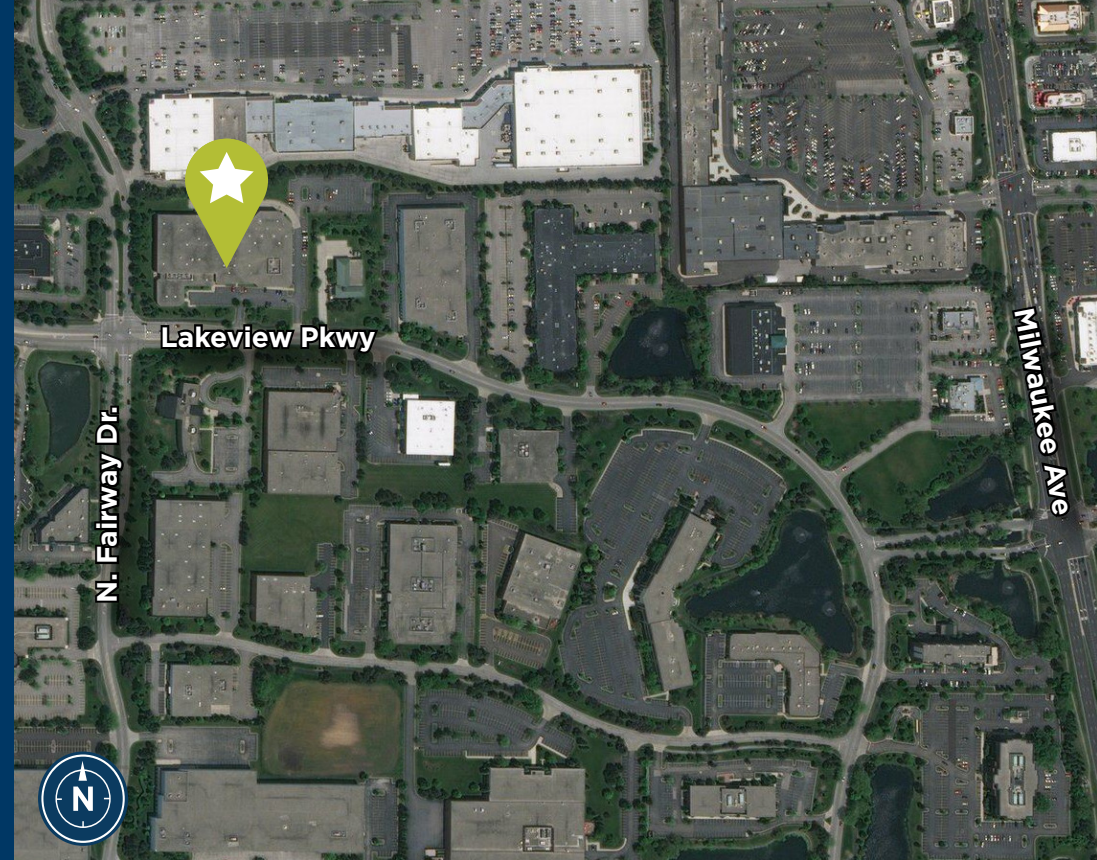
 **4 INTERIOR DOCKS**

 **1 DRIVE-IN DOOR**

 **35' X 45' BAY SIZE**

 **1200 AMPS/480 VOLTS POWER**

Lease Rate: \$8.85/SF Modified Gross

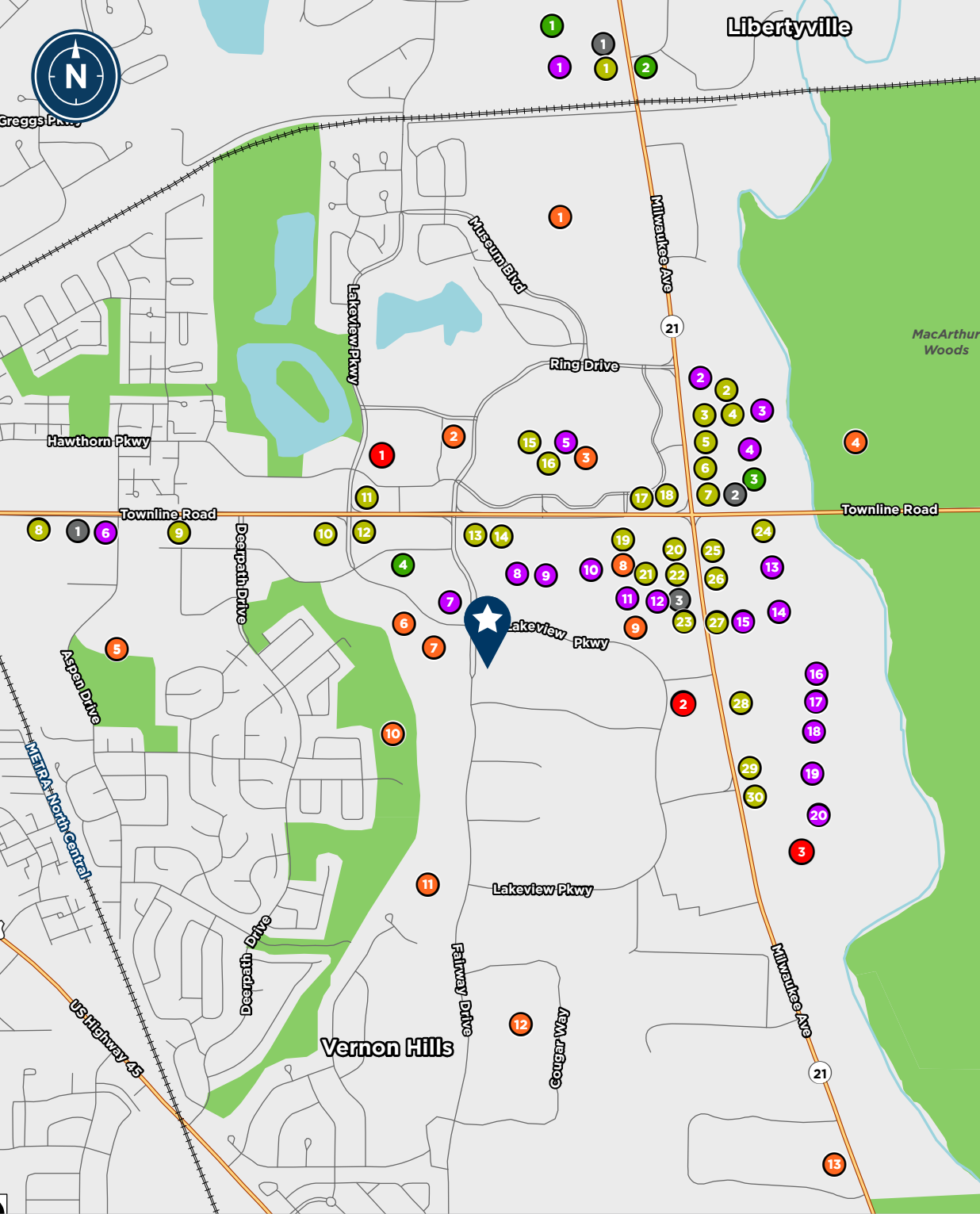


// PROPERTY HIGHLIGHTS

- Located in the prestigious Continental Executive Park surrounded by corporate neighbors:
 - Baxter, ThermoFisher Scientific, CDW, A Daigger
- Ideal for corporate HQ
- Minutes from 4-way interchange on Route 60 & I-94
- Close proximity to significant retail, restaurants, and amenities
- Low Lake County Taxes

// TOTAL BUILDING FLOOR PLAN





// AMENITIES MAP

- **Coffee**
 - 1 Starbucks Coffee
 - 2 Country Donuts
 - 3 Dunkin Donuts
- **Food**
 - 1 Panda Express
 - 2 Roti
 - 3 Lazy Dog Bar & Grill
 - 4 City Works Pour House
 - 5 Cafe Zupas
 - 6 Kuma's Corner
 - 7 B.Good
 - 8 Buffalo Wild Wings
 - 9 McAlister's Deli
 - 10 TGI Friday's
 - 11 Wendy's
 - 12 Portillos
 - 13 Corner Bakery
 - 14 Sushi Thai
 - 15 The Claim Company
 - 16 Maggiano's
 - 17 Qdoba
 - 18 Uncle Julio's
 - 19 Potbelly
 - 20 McDonald's
 - 21 Blufish
 - 22 Noodles & Co
 - 23 Jason's Deli
 - 24 Giordano's
 - 25 Chick-Fil-A
 - 26 MOD Pizza
 - 27 Five Guys
 - 28 Panera Bread
 - 29 Chipotle
 - 30 Jimmy John's
- **Grocery**
 - 1 Mariano's
 - 2 Trader Joe's
 - 3 Whole Foods Market
 - 4 SuperTarget
- **Hotels**
 - 1 Holiday Inn Express
 - 2 Hotel Indigo
 - 3 Extended Stay Vernon Hills
- **Recreation**
 - 1 Cuneo Museum & Gardens
 - 2 WhirlyBall Vernon Hills
 - 3 Dave & Busters
 - 4 MacArthur Woods
 - 5 Sullivan Aquatic Center
 - 6 Lakeview Fitness Center
 - 7 Glacier Ice Arena
 - 8 OrangeTheory
 - 9 AMC Theatres
 - 10 Deerpath Park
 - 11 CrossFit Carbon
 - 12 Vernon Hills Athletic Complex
 - 13 Lifetime Fitness
- **Shopping**
 - 1 Lowe's Home Improvement
 - 2 REI
 - 3 HomeGoods
 - 4 Nordstrom Rack
 - 5 Hawthorn Mall
 - 6 Walgreens
 - 7 US Post Office
 - 8 OfficeMax
 - 9 Petco
 - 10 Walmart
 - 11 Dick's Sporting Goods
 - 12 PetsMart
 - 13 TJ Maxx
 - 14 Michael's
 - 15 Best Buy
 - 16 The Home Depot
 - 17 DSW
 - 18 Bed Bath & Beyond
 - 19 Sam's Club
 - 20 Kohl's

**CONTINENTAL
EXECUTIVE
PARK**

645-647

LAKEVIEW PKWY

VERNON HILLS, IL



FOR MORE INFORMATION, PLEASE CONTACT:

MARC SAMUELS

Director
+1 847 720 1368
marc.samuels@cushwake.com

KEITH PURITZ

Vice Chair
+1 847 720 1366
keith.puritz@cushwake.com

BRETT A. KRONER

Vice Chair
+1 847 720 1367
brett.kroner@cushwake.com

ERIC FISCHER

Executive Managing Director
+1 847 720 1369
eric.fischer@cushwake.com

©2024 Cushman & Wakefield. All rights reserved. The material in this presentation has been prepared solely for information purposes, and is strictly confidential. Any disclosure, use, copying or circulation of this presentation (or the information contained within it) is strictly prohibited, unless you have obtained Cushman & Wakefield's prior written consent. The views expressed in this presentation are the views of the author and do not necessarily reflect the views of Cushman & Wakefield. Neither this presentation nor any part of it shall form the basis of, or be relied upon in connection with any offer, or act as an inducement to enter into any contract or commitment whatsoever. NO REPRESENTATION OR WARRANTY IS GIVEN, EXPRESS OR IMPLIED, AS TO THE ACCURACY OF THE INFORMATION CONTAINED WITHIN THIS PRESENTATION, AND CUSHMAN & WAKEFIELD IS UNDER NO OBLIGATION TO SUBSEQUENTLY CORRECT IT IN THE EVENT OF ERRORS.