

291-389 HAMILTON STREET | GENEVA, NY

GENEVA SHOPPING CENTER

JOIN STAPLES, HARBOR FREIGHT, GOODWILL, DOLLAR TREE & PLANET FITNESS

4,216-19,495 SF AVAILABLE | FOR LEASE



PROJECT DETAILS

GENEVA, NY • 4,216 - 19,495 SF AVAILABLE • FOR LEASE

PROPERTY HIGHLIGHTS

- Geneva Shopping Center offers 180,000 SF of national and regional retail in the center of Geneva.
- Five (5) spaces are available for lease in sizes ranging from 4,216 to 19,495 SF.
- Proximity to two college campuses: Hobart & William Smith and Finger Lake Community College with a total enrollment of 7,500 students.
- Signalized access with pylon signage.
- Located in the heart of New York's Finger Lakes district & surrounded by daily needs retail, established neighborhoods, and tourist attractions.
- Co-Tenants include Staples, Harbor Freight, Goodwill, Dollar Tree & Planet Fitness.

OFFERING SUMMARY

LEASE RATE	Call for Details (See Site Plan)
AVAILABLE SF	4,216 - 19,495 SF
ZONING	Commercial

2025 DEMOGRAPHICS

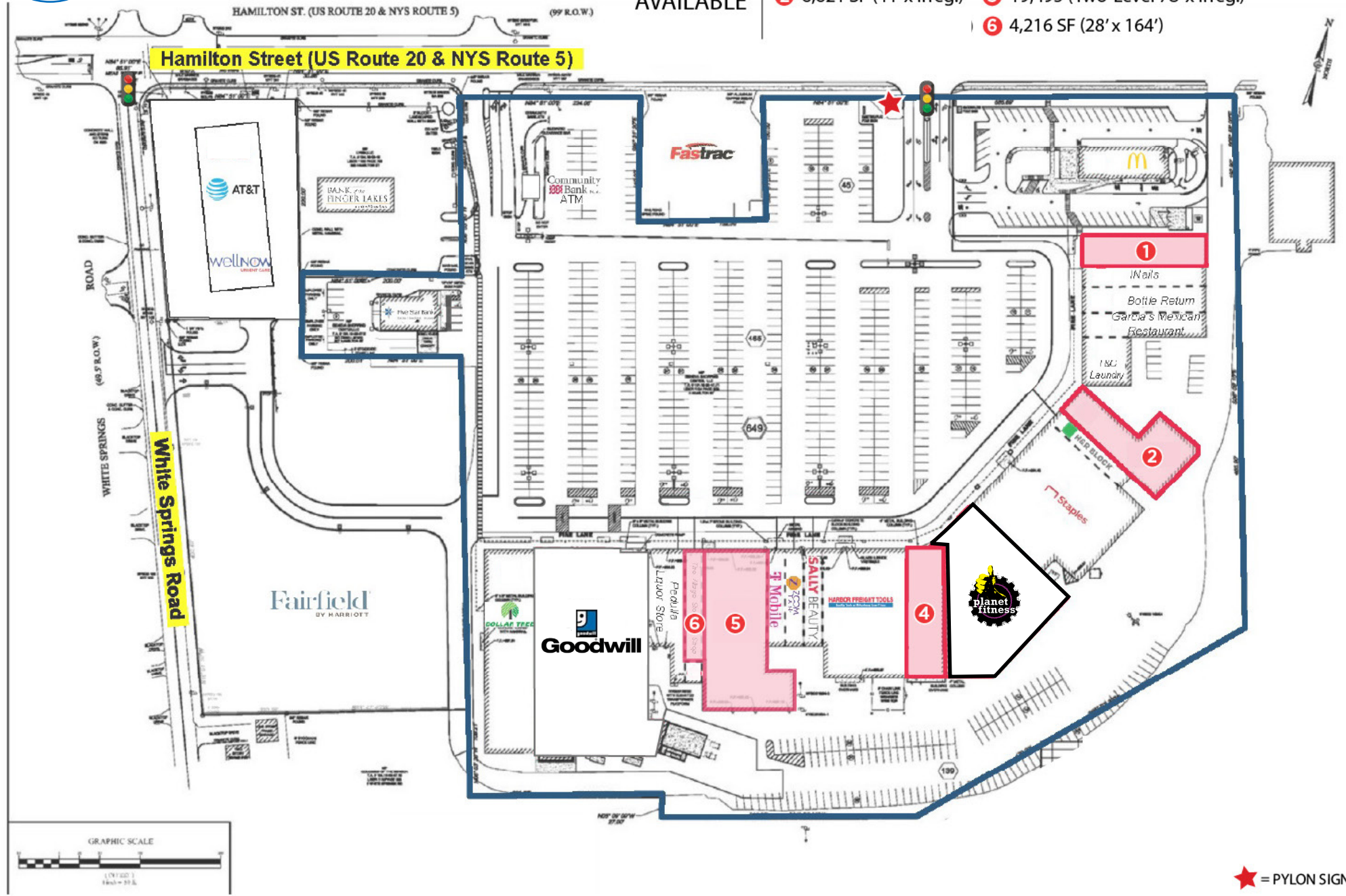
	3 MILES	5 MILES	10 MILES	20 MINUTES
 TOTAL POPULATION	15,739	18,956	40,544	45,978
 DAYTIME POPULATION	17,643	19,915	42,281	49,792
 TOTAL HOUSEHOLDS	6,658	8,014	17,152	19,343
 MEDIAN HH INCOME	\$72,276	\$73,049	\$72,051	\$72,074



SITE PLAN

AVAILABLE

- 1 6,328 SF (41' x 151')
- 2 6,621 SF (41' x Irreg.)
- 3 7,704 SF (48' x 158')
- 4 19,495 (Two-Level 78' x Irreg.)
- 5 4,216 SF (28' x 164')



★ = PYLON SIGN

291-389 HAMILTON STREET | GENEVA, NY

GENEVA SHOPPING CENTER

4,216 - 19,495 SF AVAILABLE | FOR LEASE

SHANNON OLDER

518-785-8200 X1
SOLDER@ATLANTICRETAIL.COM

ALISON BURNSIDE

518-785-8200 X3
ABURNSIDE@ATLANTICRETAIL.COM



ALBANY
15A CENTURY HILL DRIVE
LATHAM, NY
518.785.8200

ATLANTA
BOSTON
CHARLOTTE
LOS ANGELES
NEW YORK CITY
ORLANDO
PITTSBURGH
WEST PALM BEACH

WWW.ATLANTICRETAIL.COM

 LINKEDIN.COM/COMPANY/ATLANTIC-RETAIL-PROPERTIES
 INSTAGRAM.COM/ATLANTIC_RETAIL/

 
RETAIL ADVISORS