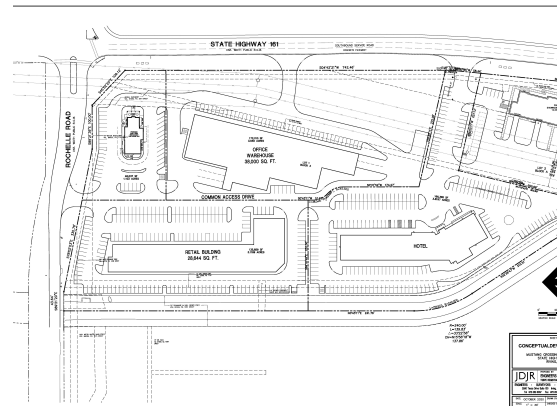
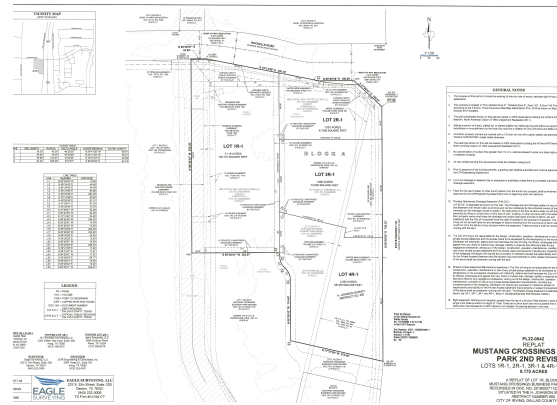




JUST LISTED

4995 W ROCHELLE ROAD | IRVING
 \$1,250,000 - 1.08Acres -
 - Listing ID 20872926

MUSTANG CROSSING BUSINESS PARK 2ND, LOT 1R2, ZONING - PD - S-P-2 IN THE C - C DISTRICT. GREAT OPPORTUNITY to establish your new Place of Business in the City of Irving just minutes from the DFW Airport. This Land is situated in a High-Volume Business District with Office Buildings, Warehouses, Hotels and Industrial Buildings that will bring an enormous flow of local business traffic and every day commuting travelers. The Sign location will elevate your business visibility with direct access to the busy 161 Highway (PGBT). The Zoning S-P-2 in the C - C District allows a large variety of buildings to be placed on this Land such as Restaurant or Fast-Food with Drive-thru, Gas Station with Convenience Store, Retail, Warehouse with Office space. A Local Irving Engineering firm has generated conceptual drawings for this Lot. The Opportunities are endless with the City of Irving.



Mark Herbert

Sales Associate 0656091 TX
 Mobile (443) 851-1585 | Office (817) 329-9005
 mark.herbert@cbdfw.com
<http://markherbert.cbintouch.com>

COLDWELL BANKER REALTY

850 E State Highway 114 Ste 100, Southlake, TX 76092

