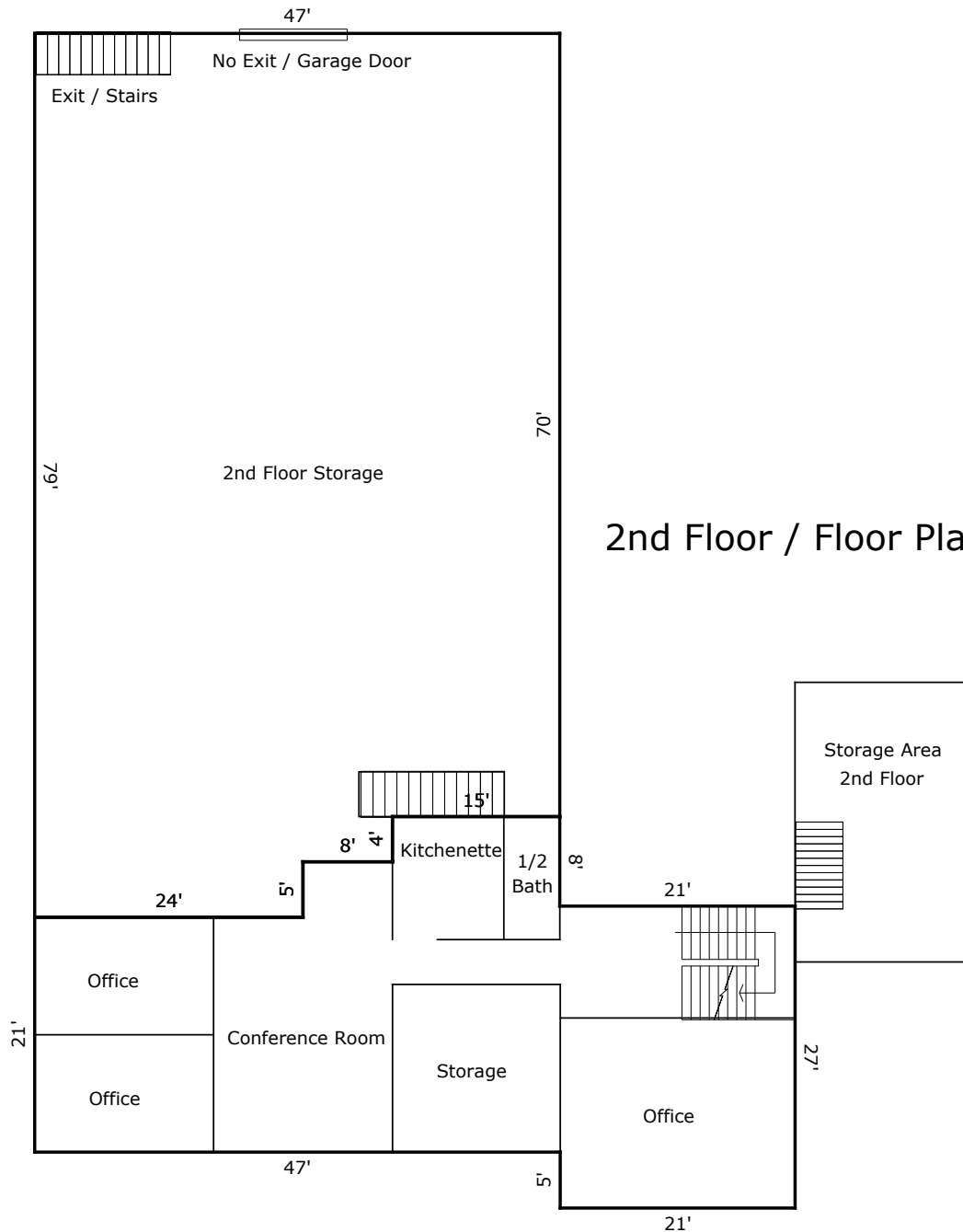


TOTAL Sketch by a la mode

#### Area Calculations Summary

Living Area		Calculation Details	
Warehouse Space	5582 Sq ft	$84 \times 50 = 4200$	
		$34 \times 16 = 544$	
		$21 \times 18 = 378$	
		$10 \times 46 = 460$	
Office Space	2667 Sq ft	$27 \times 21 = 567$	
		$47 \times 40 = 1880$	
		$10 \times 22 = 220$	
<b>Total Living Area (Rounded):</b>		<b>8249 Sq ft</b>	
Non-living Area			
Covered Porch	235 Sq ft	$5 \times 47 = 235$	
		$0.5 \times 5 \times 0 = 0$	
TOTAL Sketch software by a la mode technologies, llc. 1-800-alamode			



TOTAL Sketch by a la mode

#### Area Calculations Summary

Living Area		Calculation Details	
Office Space	1728.4 Sq ft	21 × 24	= 504
		26 × 8	= 207.7
		30 × 15	= 448.9
		21 × 5	= 105
		21 × 22	= 462.8
		0.5 × 0 × 8	= 0
2nd FL Storage Area	3535.8 Sq ft	47 × 70	= 3287.5
		4 × 8	= 32.3
		24 × 9	= 216
<b>Total Living Area (Rounded):</b>		<b>5264.2 Sq ft</b>	

TOTAL Sketch Software by a la mode technologies, llc. 1-800-alamode