

# Green Valley Corporate Center North

2370 CORPORATE CIRCLE | HENDERSON, NV 89074

CLASS A OFFICE  
**FOR LEASE**

**BRAD PETERSON** | Senior Vice President | +1 702 369 4809 | [brad.peterson@cbre.com](mailto:brad.peterson@cbre.com) | Lic. S.15152

**MARC MAGLIARDITI, SIOR, CCIM** | First Vice President | +1 702 369 4845 | [marc.magliarditi@cbre.com](mailto:marc.magliarditi@cbre.com) | Lic. S.65949

**TRAVIS LANDES, SIOR** | Vice President | +1 702 369 4846 | [travis.landes@cbre.com](mailto:travis.landes@cbre.com) | Lic. S.177027

CLICK FOR A  
**PROPERTY  
OVERVIEW**

**CBRE**



# Property Highlights

2370 Corporate Circle is a three-story, Class A professional office building constructed in 2003. Located just off the CC-215 beltway in the heart of Green Valley, Southern Nevada's first master planned communities, 2370 Corporate Center offers a campus environment surrounded by lush, mature landscaping.

OFFERING



**LEASE RATE**  
\$2.95 /PSF FSG



**SPACE AVAILABLE**  
Suite 190 ± 5,417 RSF



**OFFICE WITH A VIEW**  
an office with a view of the Las Vegas Valley



**PARKING RATIO**  
approximately 4.4:1,000 SF, covered, reserved spaces available



**THE CONVENIENCE OF NEARBY AMENITIES**  
nearby amenities include shopping, quick-service and sit-down restaurants, fitness centers, financial institutions, and gas stations



**ACCESS**  
immediate access to the CC-215 Beltway at the Green Valley Parkway interchange



**AIR TRAVEL**  
7 miles to Harry Reid International Airport



**GREEN INITIATIVES**  
green initiatives throughout the building including high-efficiency air conditioning that reduces energy consumption, recycling programs, waste management, and more



**TECHNOLOGY**  
redundant state-of-the-art fiber optic capabilities

# Site Plan

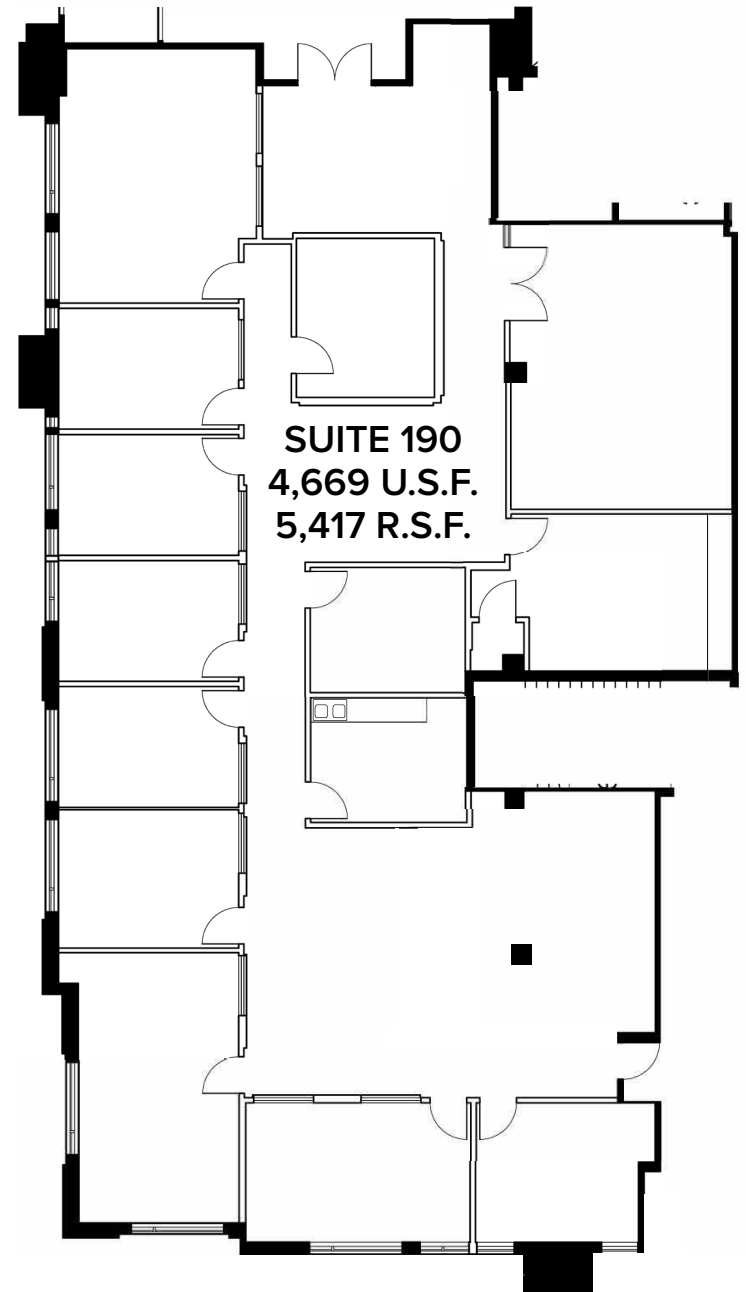
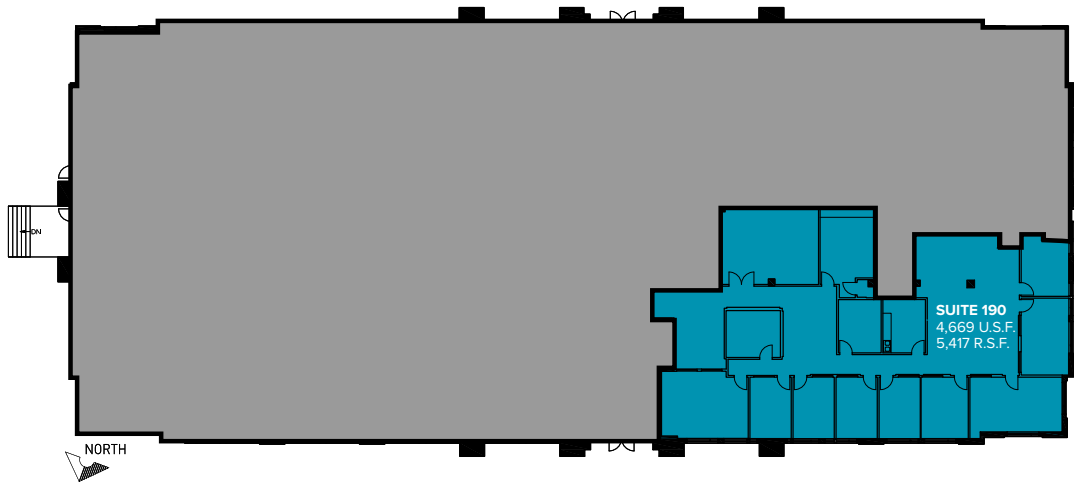
#	PROJECT	ADDRESS	PRODUCT TYPE
1	Corporate Center V	2370 Corporate Circle	Office
2	Corporate Center VI	2360 Corporate Circle	Office
3	Tech Park VI	2340 & 2350 Corporate Circle	Office
4	Tech Park V	2300 & 2310 Corporate Circle	Office
5	Plaza 10	2290 Corporate Circle	Office
6	Plaza 9	2280 Corporate Circle	Office
7	Plaza 8	2270 Corporate Circle	Office
8	Tech Park II	2260 & 2250 Corporate Circle	Office
9	Tech Park I	2230 & 2240 Corporate Circle	Office
10	Tech Park III	1301 & 1401 N. Green Valley Pkwy.	Office
11	Corporate Center II	701 N. Green Valley Pkwy.	Office
12	Corporate Center I	901 N. Green Valley Pkwy	Office
13	Corporate Center III	2275 Corporate Circle	Office
14	Corporate Center IV	2285 Corporate Circle	Office





# Suite 190 Floor Plan

- ± 5,417 RSF
- Off Lobby, Double Door Entrance
- 2 Conference Rooms
- Break Room
- Storage / Work Room with IT Closet
- 9 Offices
- 2 Executive Offices





# Location







PROPERTY PHOTOS





# Green Valley Corporate Center North

2370 CORPORATE CIRCLE  
HENDERSON, NV 89074

CLASS A OFFICE  
**FOR LEASE**

**BRAD PETERSON** | Senior Vice President | +1 702 369 4809 | [brad.peterson@cbre.com](mailto:brad.peterson@cbre.com) | Lic. S.15152

**MARC MAGLIARDITI, SIOR, CCIM** | First Vice President | +1 702 369 4845 | [marc.magliarditi@cbre.com](mailto:marc.magliarditi@cbre.com) | Lic. S.65949

**TRAVIS LANDES, SIOR** | Vice President | +1 702 369 4846 | [travis.landes@cbre.com](mailto:travis.landes@cbre.com) | Lic. S.177027

**CBRE**

© 2024 CBRE, Inc. All rights reserved. This information has been obtained from sources believed reliable, but has not been verified for accuracy or completeness. You should conduct a careful, independent investigation of the property and verify all information. Any reliance on this information is solely at your own risk. CBRE and the CBRE logo are service marks of CBRE, Inc. All other marks displayed on this document are the property of their respective owners, and the use of such logos does not imply any affiliation with or endorsement of CBRE. Photos herein are the property of their respective owners. Use of these images without the express written consent of the owner is prohibited.