

SWC Route 53 and Laraway Rd

Joliet, IL 60436

LAND FOR SALE



W Laraway Rd

53

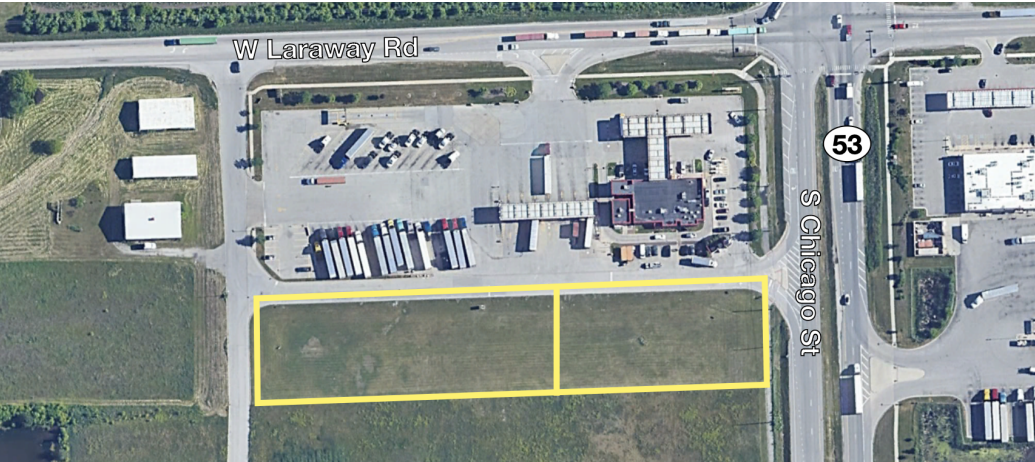
S Chicago St

john
greene
COMMERCIAL

SWC Route 53 and Laraway Rd | Joliet, IL 60436

LAND FOR SALE

john greene Commercial | 1311 S Route 59, Naperville, IL 60564 | 630.229.2290



OFFERING SUMMARY

Sale Price:	\$836,000
Lot Size:	2.53 Acres
Zoning:	B-3
Taxes:	\$2,235.12 (2023)

PROPERTY OVERVIEW

2.53± AC of commercial land available near the southwest corner of Route 53 and Laraway Road in Joliet.

PROPERTY HIGHLIGHTS

- Zoned B-3
- Within Joliet city limits
- In close proximity to CenterPoint Intermodal facilities and Chicagoland Speedway

Chris Condon
chriscondon@johngreenecommercial.com
815.693.3005

The information contained herein is from sources john greene Real Estate deems reliable, but is not guaranteed. This offer may be withdrawn from the market or be subject to a change in price or terms without advance notice. Seller reserves the right to reject any and all offers. Duplication is expressly prohibited. 2019



SWC Route 53 and Laraway Rd | Joliet, IL 60436

LAND FOR SALE

john greene Commercial | 1311 S Route 59, Naperville, IL 60564 | 630.229.2290



Chris Condon
chriscondon@johngreenecommercial.com
815.693.3005

The information contained herein is from sources john greene Real Estate deems reliable, but is not guaranteed. This offer may be withdrawn from the market or be subject to a change in price or terms without advance notice. Seller reserves the right to reject any and all offers. Duplication is expressly prohibited. 2019

**john
greene**
COMMERCIAL