

# 2534 STATE STREET

SAN DIEGO, CA 92101

SAN DIEGO  
INTERNATIONAL  
AIRPORT



2534 STATE ST  
7,004 SF Bldg

2516-20 STATE ST  
5,002 SF Parcel

**MODERN  
OFFICE BUILDING  
& VACANT LAND  
PARCEL**

.....  
**FOR SALE**

PROPERTIES CAN BE SOLD SEPARATELY OR TOGETHER

**RYAN KING**

858-395-7208

ryan.king@cast-cap.com

License #01885401

**BRET MORRISS**

619-308-6787

bret.morriss@cast-cap.com

License #02037074

**CAST**  
CAPITAL PARTNERS

# 2534 STATE STREET

## PROPERTY HIGHLIGHTS

<b>BUILDING SF</b>	7,004 SF
<b>LAND AREA</b>	4,884 SF
<b>PRICE</b>	<b>\$3,500,000</b>

### Modern 3-Story Office Building (Built 2008)

High quality office with elevator service and covered parking.

### Executive Suite Layout with Multiple Income Streams including Executive Suites & Virtual Rent via Mailboxes

Seller currently uses one-floor and operates the other floor as an Executive Suite which collects approximately \$7,600/month. Another additional revenue stream comes from Virtual Rent for \$1,750/month. **The total additional income is \$9,350/month.**

### Integrated On-Site Covered and Secure Parking

Covered parking garage on the 1st Floor plus Lobby Area.

### High Accessible Banker's Hill / Mission Hills Location

Adjacent to I-5 and minutes to Downtown San Diego, Little Italy, Balboa Park, and SD International Airport.





# 2516-20 STATE STREET

## PROPERTY HIGHLIGHTS

LAND SF

5,002 SF

SECURE PARKING LOT

Gated Parking currently utilized by Owner that can park approximately 12 parking stalls.

ZONING CC-3-4

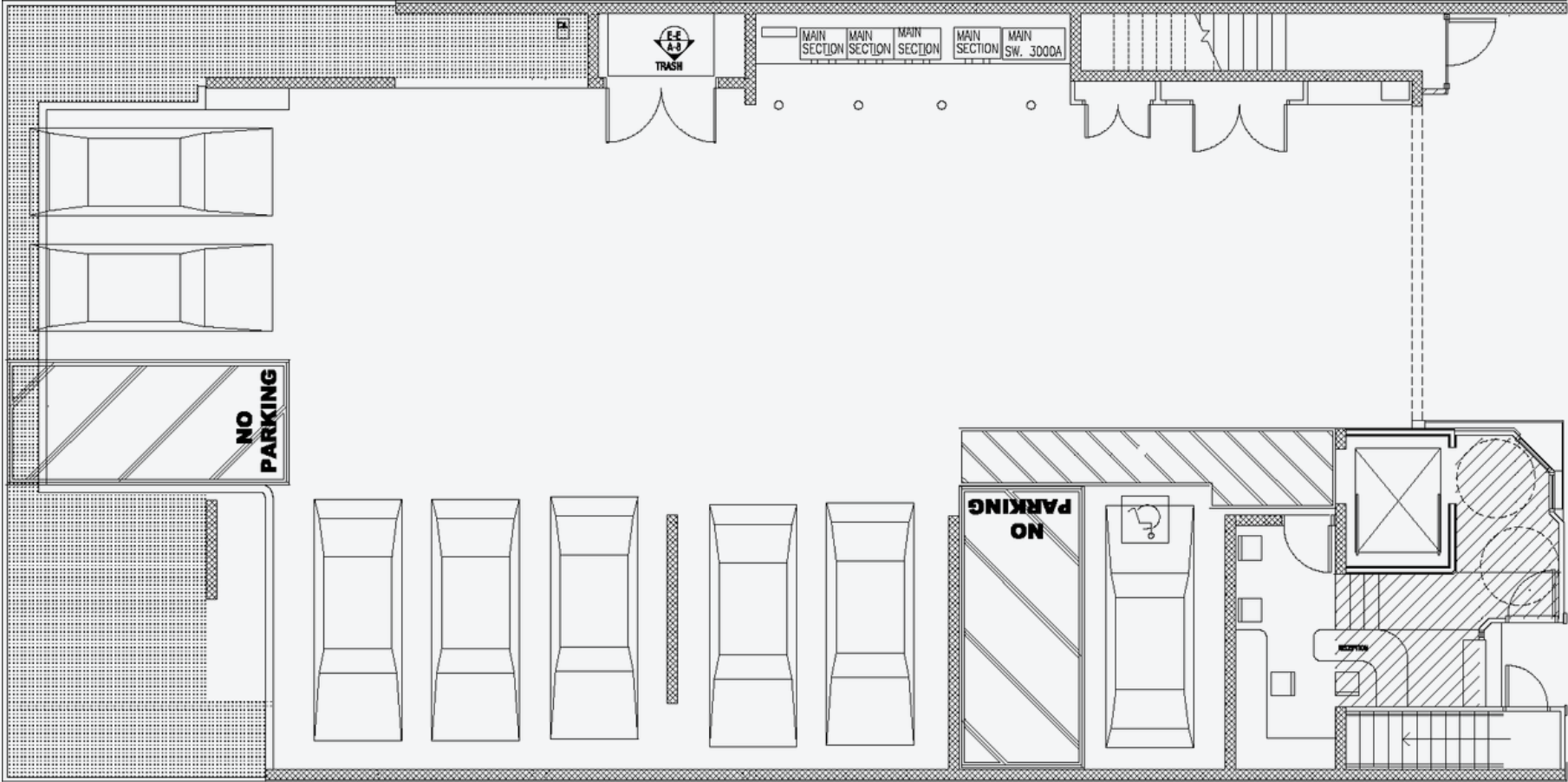
Tier 3 Complete Communities

PRICE

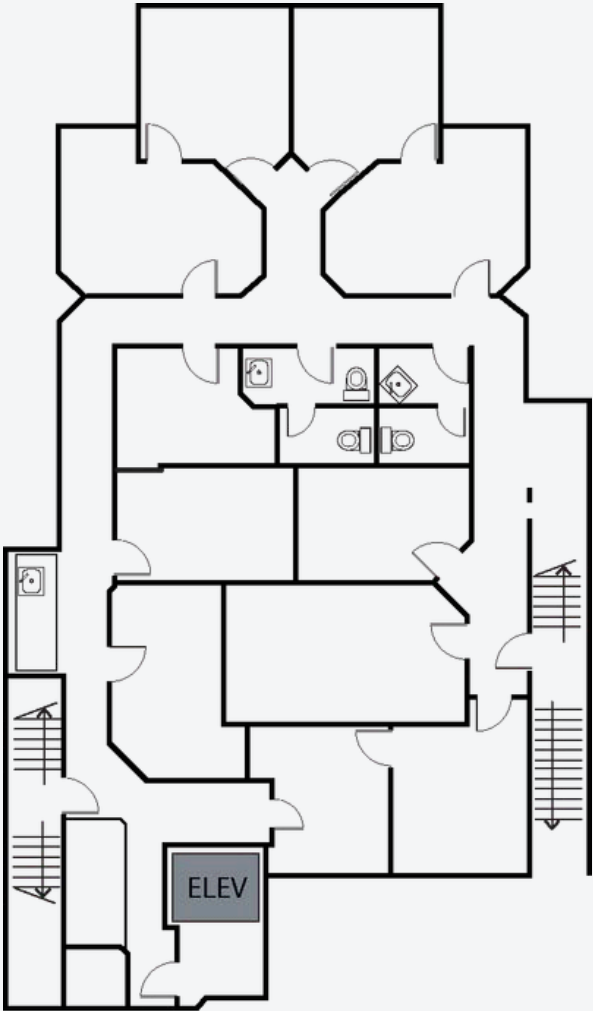
**\$1,250,000**

PROPERTY & PARKING CAN BE SOLD  
TOGETHER OR SEPARATELY. OWNER WILL  
CONSIDER ALL OFFERS

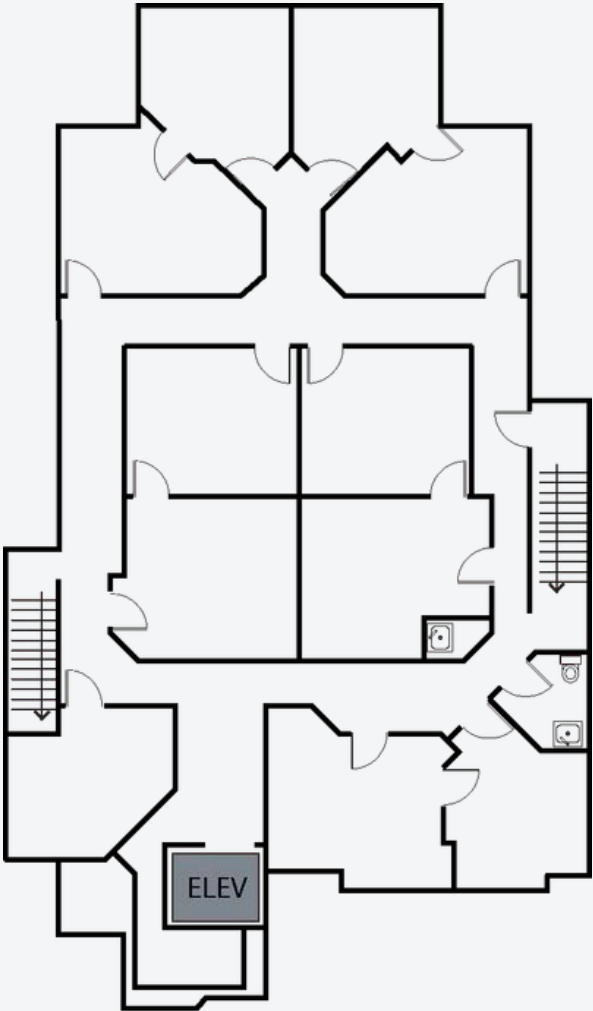
# PARKING FLOOR PLAN



# FLOOR PLAN

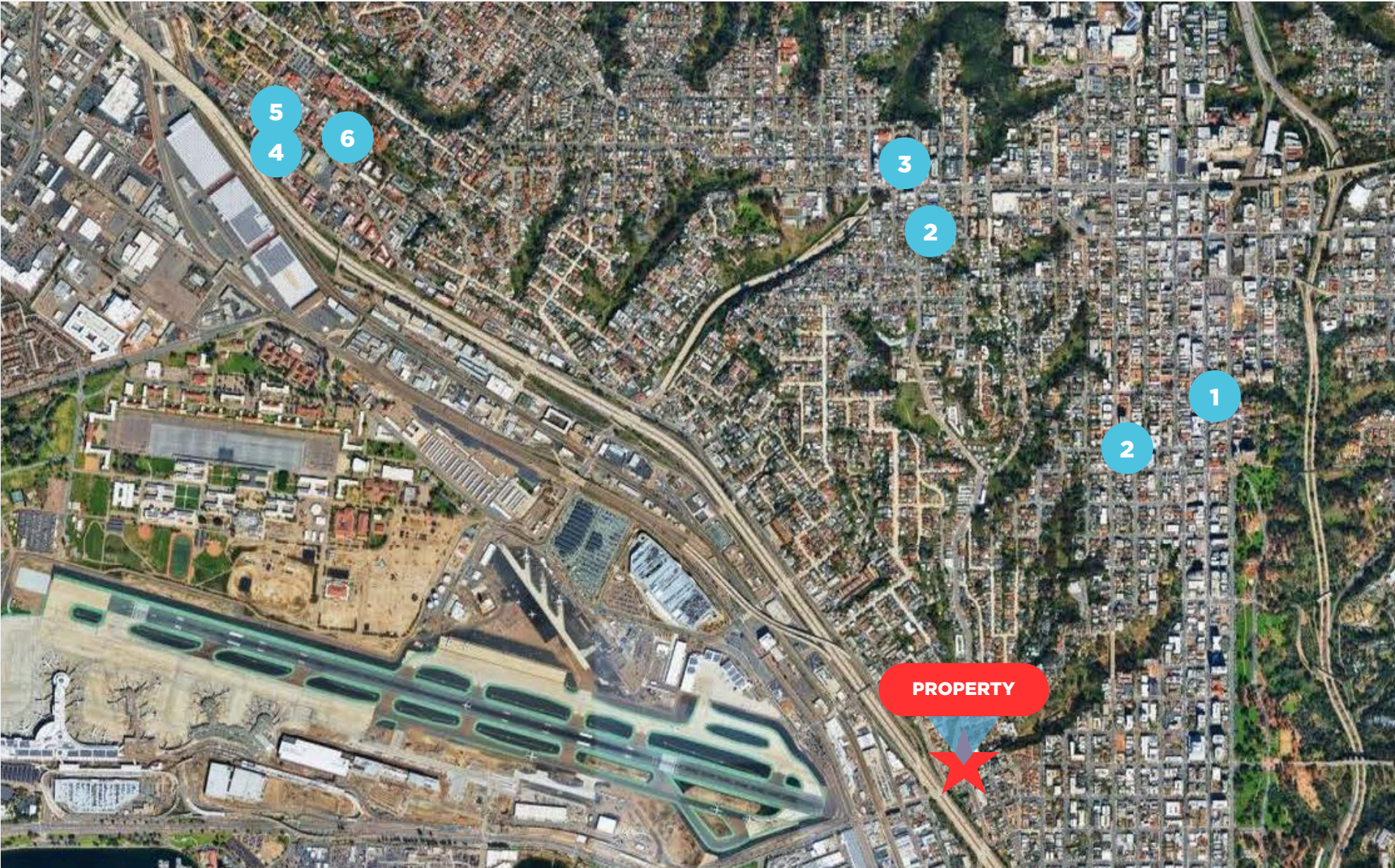


2ND FLOOR




3RD FLOOR

# SOLD COMPARABLES



# SOLD COMPARABLES

	#	PROPERTY ADDRESS	SALE DATE	BUILT	SALE PRICE	PRICE/SF	BUILDING SIZE	LAND AREA
	1	3579 5th Ave, San Diego	10/10/2025	1976	\$3,150,000	\$720	4,378 SF	5,227 SF (0.12 AC)
	2	3921 Goldfinch St, San Diego	8/15/2025	1930	\$1,410,000	\$927	1,521 SF	5,227 SF (0.12 AC)
	3	4010 Goldfinch St, San Diego	5/14/2025	2000	\$3,200,000	\$634	5,050 SF	4,792 SF (0.11 AC)
	4	3920 Conde St, San Diego	3/17/2025	1985	\$1,610,000	\$722	2,231 SF	4,792 SF (0.11 AC)
	5	2477 Congress St, San Diego	10/25/2024	1986	\$1,800,000	\$731	2,464 SF	5,001 SF (0.11 AC)
	6	2398 San Diego Ave, San Diego	7/15/2024	1970/2013	\$3,400,000	\$796	4,270 SF	12,197 SF (0.28 AC)
	7	205 Walnut Ave, San Diego	7/5/2024	1970	\$2,200,000	\$696	3,161 SF	5,663 SF (0.13 AC)



W LAUREL ST

STATE STREET





8

OLD TOWN  
SAN DIEGO

MIDWAY  
RETAIL /  
SPORTS ARENA  
DISTRICT

OLD TOWN  
TRANSIT  
CENTER

5

MISSION HILLS

FIVE POINTS

WASHINGTON  
ST TROLLEY  
STATION

MIDDLETOWN

5

LIBERTY  
STATION

PORT OF  
SAN DIEGO

SAN DIEGO  
INTERNATIONAL  
AIRPORT

**SITE**

BANKERS  
HILL

DOWNTOWN  
SAN DIEGO



# CAST

CAPITAL PARTNERS

5090 Shoreham Place Suite 100  
San Diego, CA 92122  
information@cast-cap.com  
619-308-6680

[www.Cast-Cap.com](http://www.Cast-Cap.com)

**RYAN KING**  
858-395-7208  
ryan.king@cast-cap.com  
License #01885401

**BRET MORRISS**  
619-308-6787  
bret.morriss@cast-cap.com  
License #02037074

This information above was obtained from sources deemed reliable. No warranties or representations, expressed or implied, are made as to the accuracy of the information contained herein, and same is submitted subject errors, omissions, change of price, rental or other conditions, withdrawal without notice, and to any special listing conditions imposed by our principals. This information is given with the understanding that all negotiations relating to the purchase, renting or leasing of the property described herein shall be conducted through CAST Capital Partners.