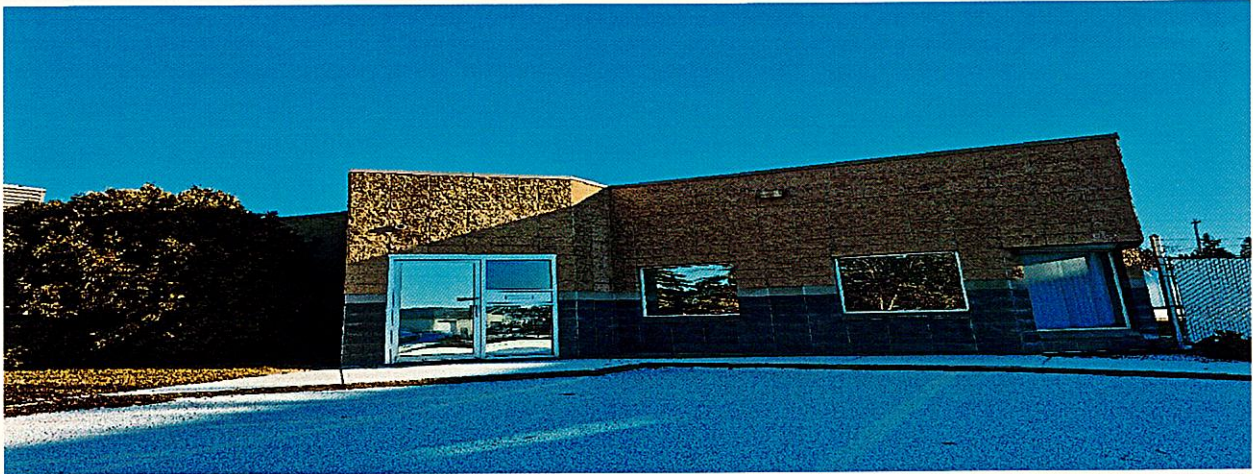


# BERMONT

REALTY (1983) LTD.

200 - 14 PERRON STREET  
ST. ALBERT, ALBERTA T8N1E4  
PHONE: (780) 459-7786  
FAX: (780) 459-0235  
www.bermontrealty.com  
email: info@bermontrealty.com

## OFFICE SPACES FOR LEASE



### 20 Rayborn Crescent, St Albert T8N 5C1

- New offices to be demised
- From 1200 sq. ft. to 4000 sq. ft. maximum
- Base lease rate: \$16.00 / sq. ft.
- Common costs: \$6.50 / sq. ft. for 2026, plus shared utilities
- Can be custom designed & completed to suit your needs
- From 1200 sq. ft. to 4000 sq. ft. maximum
- Zoning: Riel Business Park - Commercial / Service
- New rooftop HVAC units (heating, ventilation & air conditioning)

FOR INFORMATION CONTACT GUY C. HEBERT

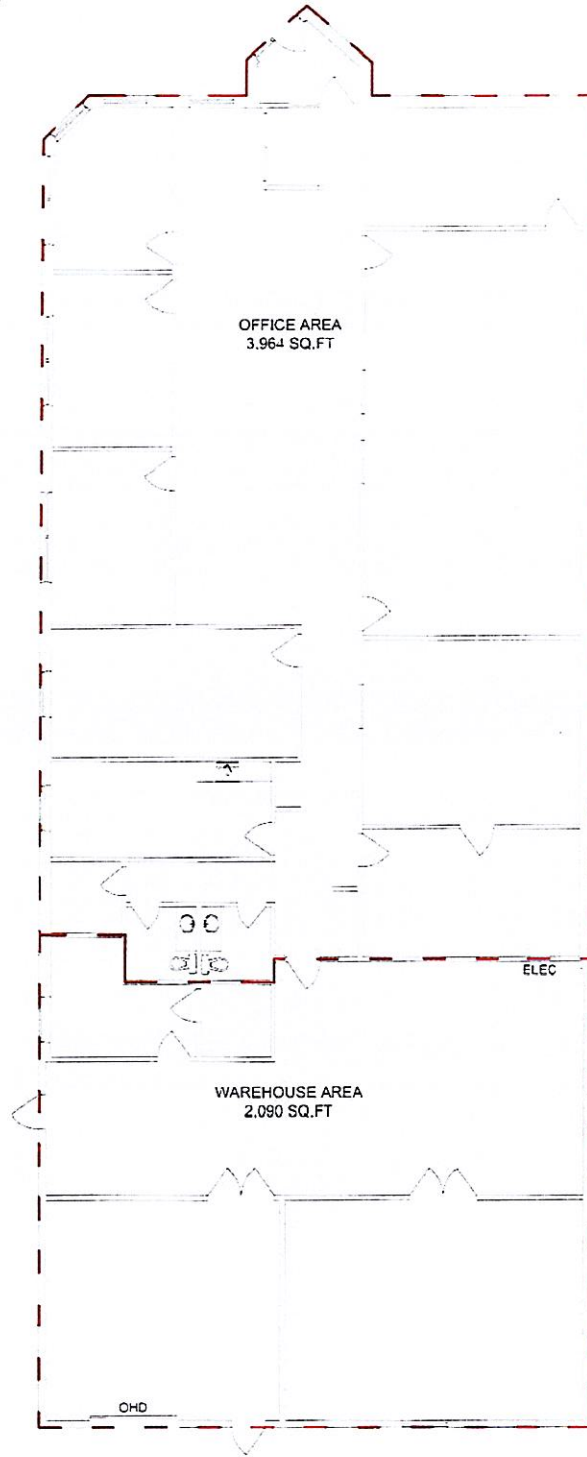
780-445-4723

[guy@bermontrealty.com](mailto:guy@bermontrealty.com)

**AREA CERTIFICATION:**

As evidenced by our signature and in accordance with the BOMA Industrial Standard of Measurement (ANSI BOMA Z65.2-2012), we hereby certify the Rentable Area of this space to be **6,054 Square Feet**.

Measure Masters Edmonton



20 Rayborn Crescent  
St. Albert, AB

