



93 Court Street

(Between Livingston & Schermerhorn Streets)

As Exclusive Agents, we are pleased to present the following for Lease:

**Prime Downtown Brooklyn
Retail Opportunity**

Single Tenant Net Lease

 **Douglas Elliman**
Commercial

575 MADISON AVENUE, NEW YORK, NEW YORK 10022

93 Court Street

Position your business at the epicenter of one of Brooklyn's most dynamic corridors. *93 Court Street* presents a rare flagship leasing opportunity in a high-visibility location defined by exceptional pedestrian traffic and a thriving mix of retail, dining, and professional services.

The property is conveniently connected to multiple subway lines and nearby transportation hubs, making it effortless for customers, clients, and staff to access. The surrounding neighborhood is a proven retail destination, drawing consistent activity from a dense residential base, office population, and visitors with close proximity to Kings County Court System.

93 Court St delivers the exposure, accessibility, and energy synonymous with top-tier retail success.

Location Downtown Brooklyn between Livingston & Schermerhorn Streets

Space

Ground Floor:	2,416 RSF
Second Floor:	1,716 RSF
Third Floor:	1,716 RSF
Lower Level:	1,718 RSF
Total:	7,566 RSF

**Divisions Considered*

Frontage 18'

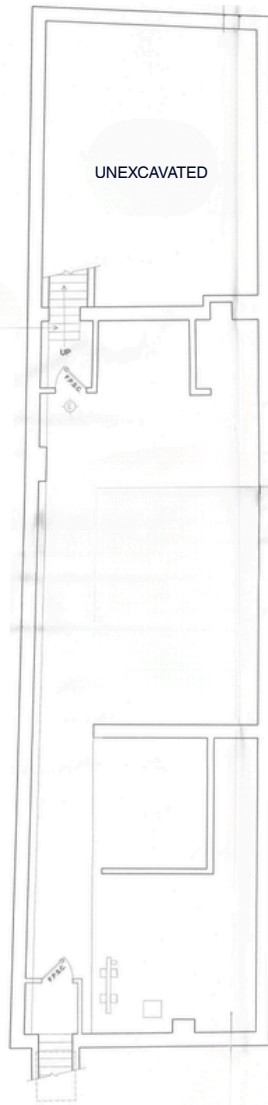
Rent Upon Request

- Features**
- Double height ceilings & window frontage
 - Full Branding Opportunity
 - Second & Third Floor Office Space renovation completed in 2024



93 Court Street, Single Tenant Retail

FLOOR PLANS



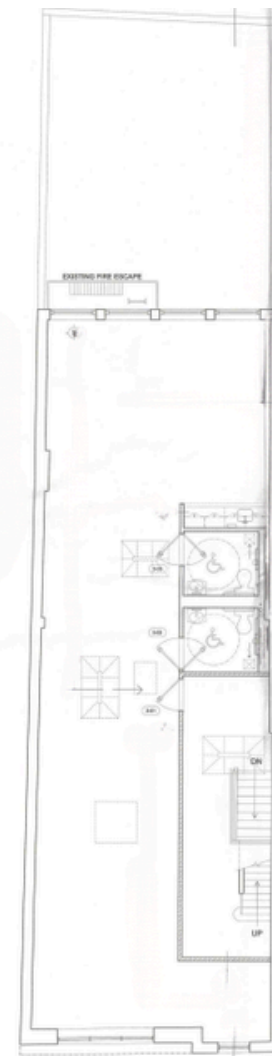
Lower Level
1,718 RSF



Ground Floor
2,416 RSF



Second Floor
1,716 RSF

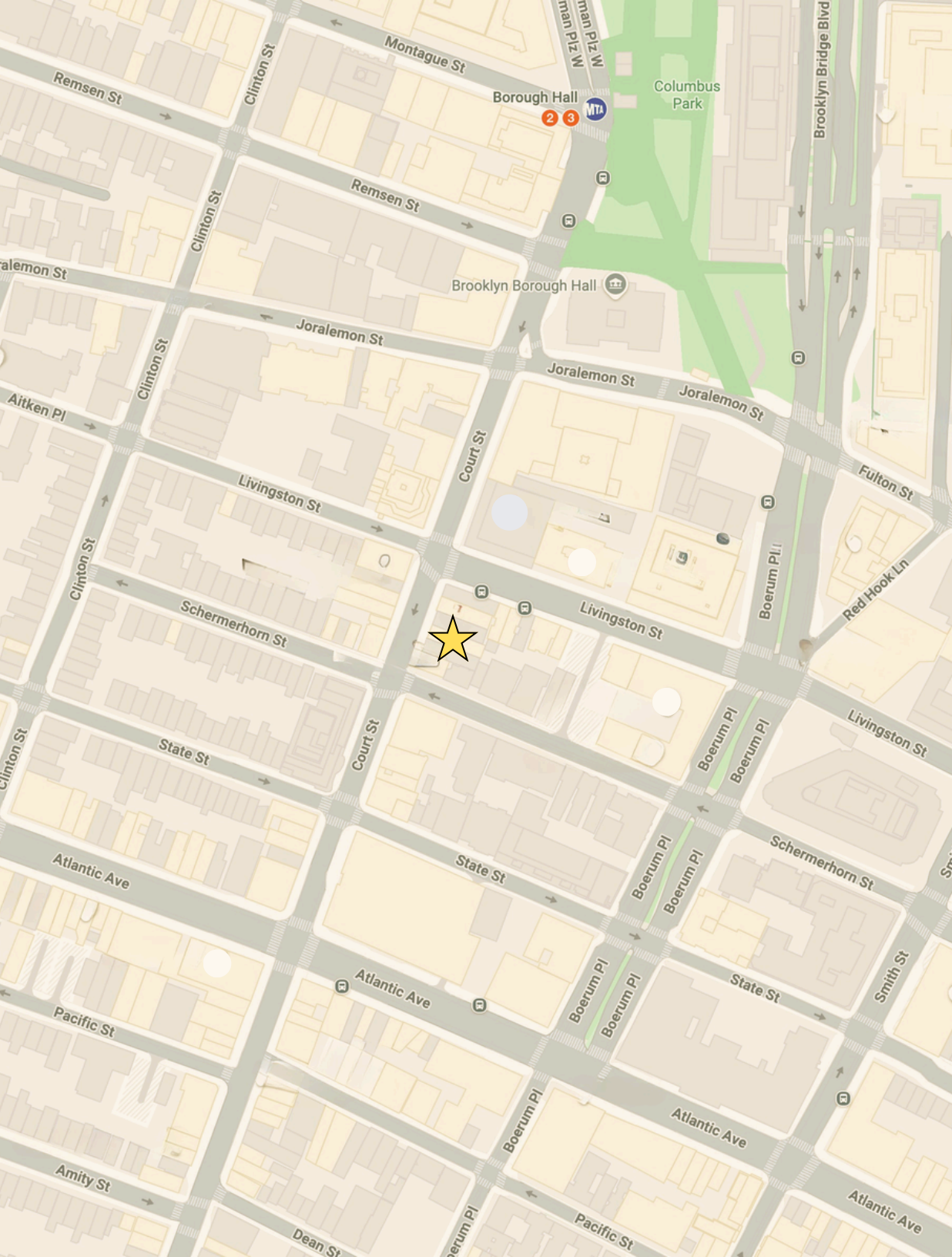


Third Floor
1,716 RSF

93 Court Street, Single Tenant Retail

ADDITIONAL PHOTOS





For further information and inspection, please contact:

Louis Puopolo

Division Head NYC - DE Commercial
Licensed Associate Real Estate Broker
917-374-0099
louis.puopolo@elliman.com

Alex Furst

Executive Director - DE Commercial
Licensed Associate Real Estate Broker
347-281-3165
alexander.furst@elliman.com

Kristin Irwin

Operations Manager - DE Commercial
Licensed Real Estate Salesperson
336-420-1993
kristin.irwin@elliman.com



©2025 DOUGLAS ELLIMAN COMMERCIAL, LLC. ALL RIGHTS RESERVED. THE INFORMATION CONTAINED IN THIS DOCUMENT IS PROPRIETARY TO DOUGLAS ELLIMAN COMMERCIAL, LLC AND SHALL BE USED SOLELY FOR THE PURPOSES OF EVALUATING THIS PROPOSAL. ALL SUCH DOCUMENTATION AND INFORMATION REMAINS THE PROPERTY OF DOUGLAS ELLIMAN COMMERCIAL, LLC AND SHALL BE KEPT CONFIDENTIAL. REPRODUCTION OF ANY PART OF THIS DOCUMENT IS AUTHORIZED ONLY TO THE EXTENT NECESSARY FOR ITS EVALUATION. IT IS NOT TO BE SHOWN TO ANY THIRD PARTY WITHOUT THE PRIOR WRITTEN AUTHORIZATION OF DOUGLAS ELLIMAN COMMERCIAL, LLC. ALL INFORMATION CONTAINED HEREIN IS FROM SOURCES DEEMED RELIABLE; HOWEVER, NO REPRESENTATION OR WARRANTY IS MADE AS TO THE ACCURACY THEREOF.