

PROFESSIONAL OFFICES FOR LEASE

COOK STREET BUSINESS AREA



75150 Sheryl Avenue, Stes A/B/C & E, Palm Desert. CA
Off Cook Street, N. of Fred Waring

SIZES: 4,300 SF & 2,000 SF
PRICE: \$1.50/ SF Modified Gross



GREAT LOCATION!

- Suites A/B/C - 4,300 SF Available
- Suites E - 2,000 SF Available
- Built in 1990
- Plenty of Parking
- IP (Industrial Park) Zoning
- APN: 634-260-029



www.baxleyproperties.com
Phone: 760-773-3310
Fax: 760-773-3013
73712 Alessandro Drive, Ste B-4, Palm Desert, CA 92260

Matthew Longstreth
matthew@baxleyproperties.com
Ofc: 760-773-3310
Cell: 949-293-1314

DRE# 01322594

DISCLAIMER:

The information above has been obtained from sources believed reliable. While we do not doubt its accuracy, we have not verified it and make no guarantee, warranty or representation about it. It is your responsibility to independently confirm its accuracy and completeness. Any projections, opinions, assumptions or estimates used are for example only, and do not represent the current or future performance of the property.

2/5/2025

PROFESSIONAL OFFICES FOR LEASE

75150 Sheryl Avenue, Suites A/B/C & E, Palm Desert, CA

SUITES A/B/C:

- 4,300 SF Available
- Reception & Waiting Area
- (5) Private Offices
- Conference Room
- Physical Therapy Room
- (3) Restrooms

FOR LEASE

Suites A/B/C - 4,300 SF

Suite E - 2,000 SF

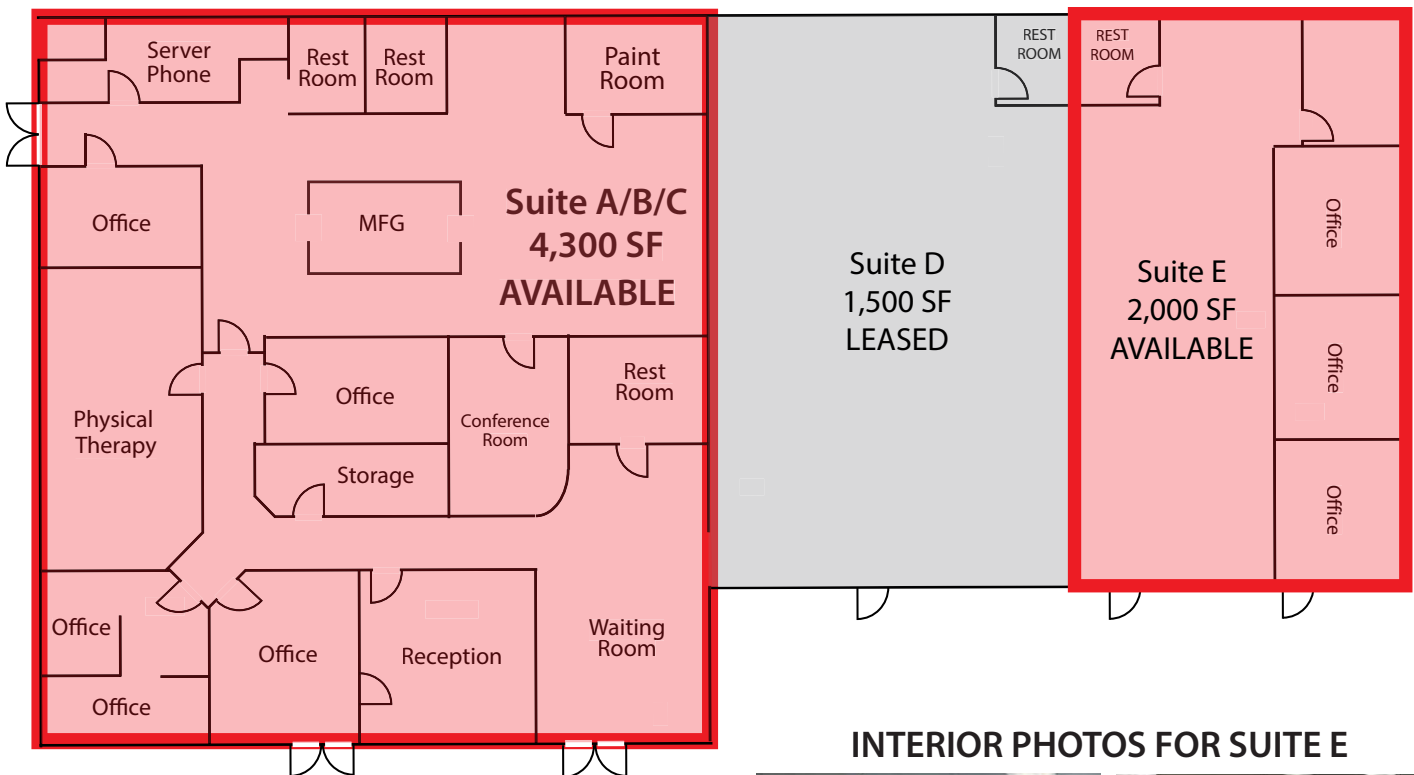
\$1.50/SF Mod. Gross

Available Now!

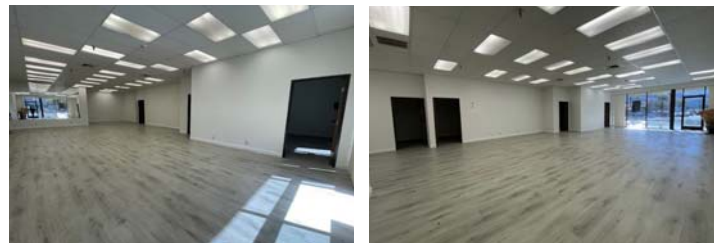
SUITE E:

- 2,000 SF Available
- Open Floor plan
- (3) Private Offices
- Storage Room
- (1) Restroom

FLOOR PLAN



INTERIOR PHOTOS FOR SUITE E



DISCLAIMER:

The information above has been obtained from sources believed reliable. While we do not doubt its accuracy, we have not verified it and make no guarantee, warranty or representation about it. It is your responsibility to independently confirm its accuracy and completeness. Any projections, opinions, assumptions or estimates used are for example only, and do not represent the current or future performance of the property.

PROFESSIONAL OFFICES FOR LEASE

75150 Sheryl Avenue, Suites A/B/C & E, Palm Desert, CA

INTERIOR PHOTOS FOR SUITES A/B/C



DISCLAIMER:
The information above has been obtained from sources believed reliable. While we do not doubt its accuracy, we have not verified it and make no guarantee, warranty or representation about it. It is your responsibility to independently confirm its accuracy and completeness. Any projections, opinions, assumptions or estimates used are for example only, and do not represent the current or future performance of the property.