

AVISON
YOUNG

220 Bay Street

Toronto, Ontario

**Epicentre of
financial core**



Building Overview

220 Bay is at the centre of Toronto's premier business centre, an area that includes Union Station the PATH underground walkway and Canada's five major banks. Office space at 220 Bay is column free to maximize your design flexibility, offers small floorplates to provide big natural light and full control of your environment with full floor tenancy.

Space	Ground Floor	PATH Level
Sf	3,664 sf	2,790 sf
Availability	July 1, 2023	
Additional Rent	\$30.03 psf	
Net Rent	Contact Listing Agents	



Immediate access to TD Centre, Commerce Court West, Royal Bank Plaza and Brookfield Place



2- minute walk to Union Station for TTC, and GO access



PATH connected building



328,436
Daytime
Population*

*2022 Estimate, 1km Radius

Neighborhood Overview



Walking time to
Union Station - 4 minutes
Eaton Centre - 9 minutes

97

Walker's paradise
Daily errands do not require a car

100

Rider's paradise
World-class public transportation

87

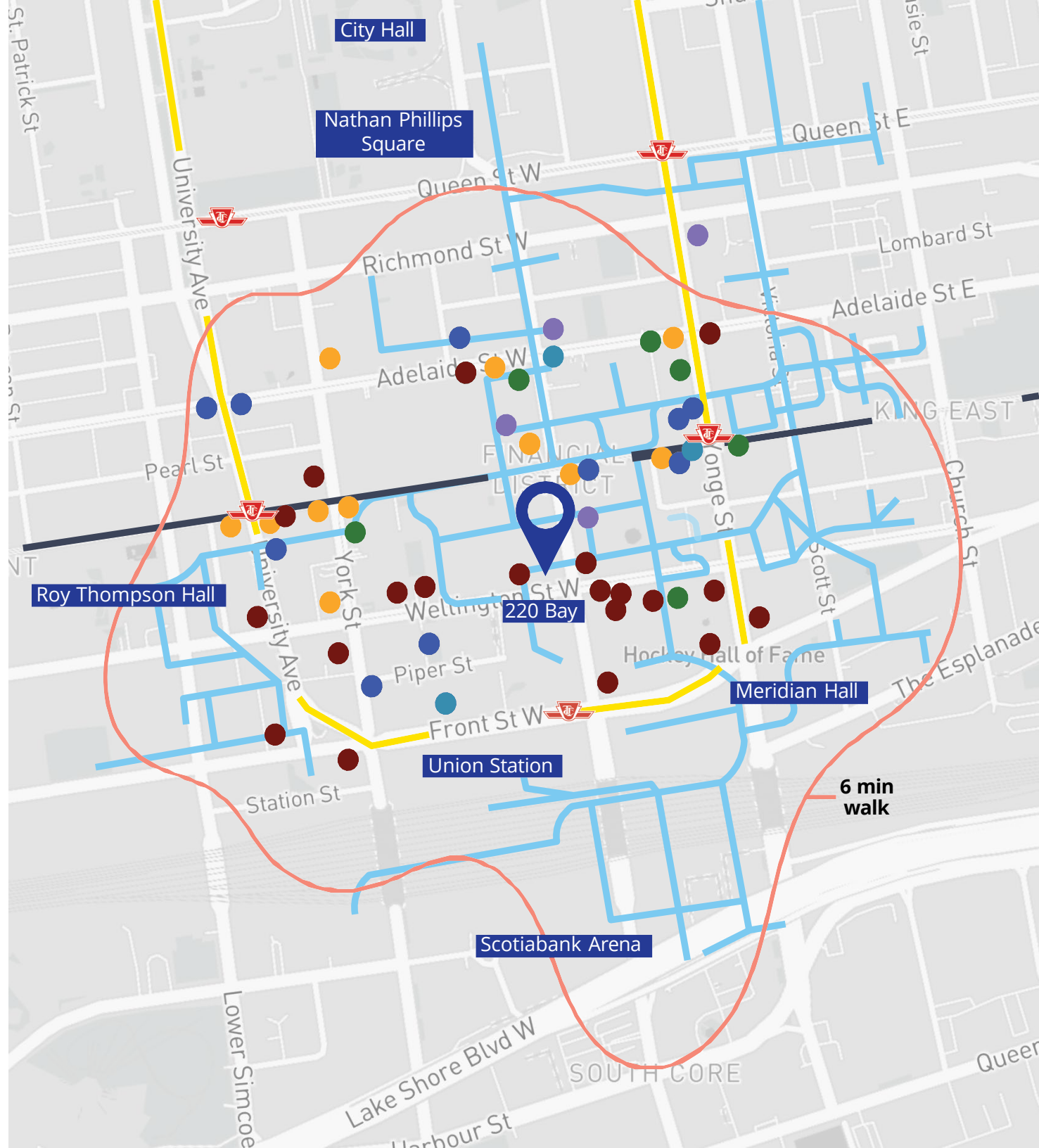
Very bikeable
Biking is convenient for most trips

Amenities

- | | |
|--|---|
| ● Cafe | ● Retail |
| ● Restaurants | ● Hotels |
| ● Banks | ● Gyms |

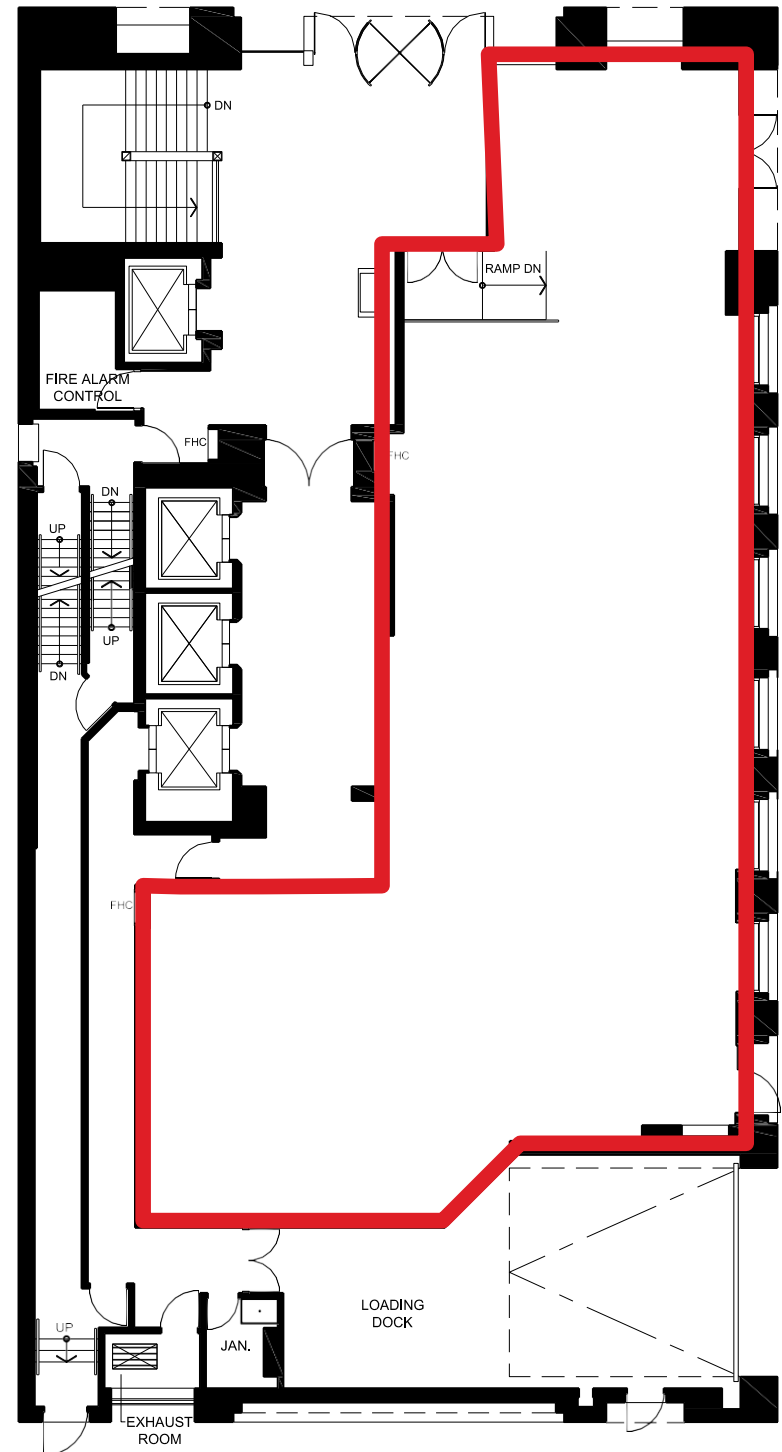
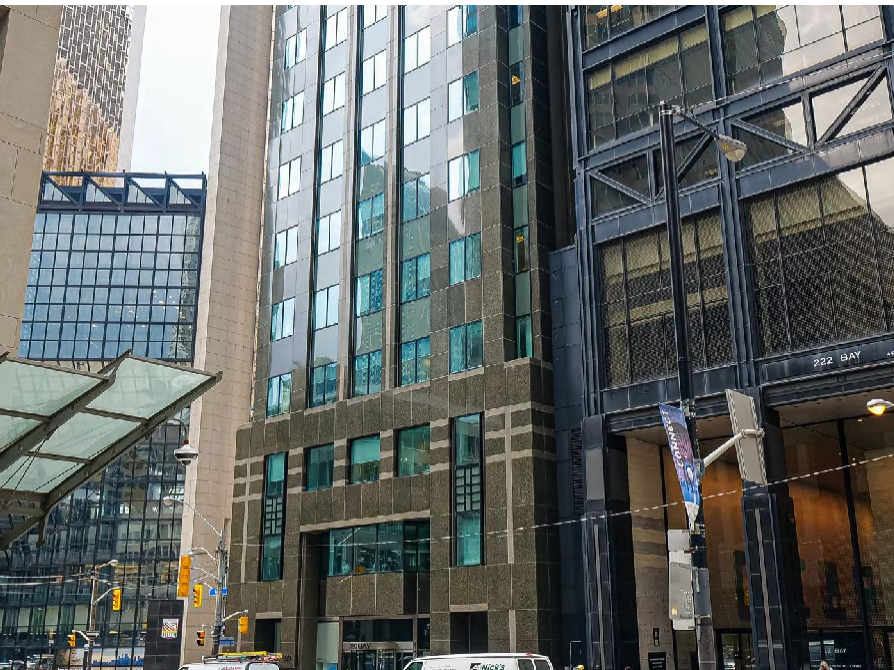
Transit

- Yonge-University Subway - Line 1
- King Streetcar Lines
- PATH
- Subway Stations



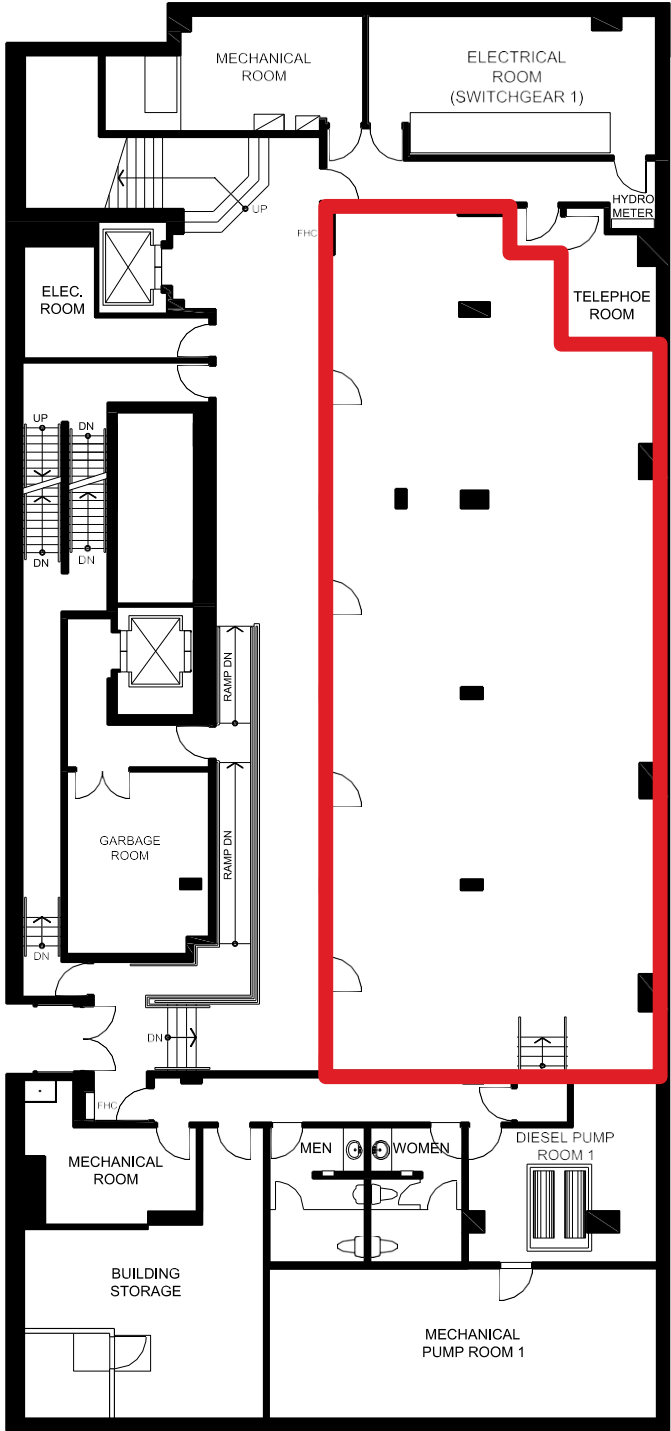
Ground Floor - Retail

Available Space	Suite 101 - 3,664 sf
Net Rent	Contact Listing Agents
Additional Rent	\$30.03 psf
Availability	July 1 ,2023



PATH Level

Available Space	2,790 sf
Net Rent	Contact Listing Agents
Additional Rent	\$30.03 psf
Availability	July 1 ,2023





**Get more
information**

Tim J.A. Hooton
Principal, Sales Representative
O: 416.673.4011
C: 416.456.0612

Mike Brouwer
Vice President, Sales Representative
O: 416.673.4044
C: 416.505.7615

avisonyoung.ca



Platinum
member