

1333 W 120TH AVENUE, WESTMINSTER, CO 80234



# ONE PARK CENTRE

W. RYAN STOUT  
303 813 6448  
ryan.stout@cushwake.com

NATHAN J. BRADLEY  
303 813 6444  
nathan.bradley@cushwake.com

ZACHARY T. WILLIAMS  
303 813 6474  
zach.williams@cushwake.com





# 1 ONE PARK CENTRE



## BUILDING FEATURES

RBA:	69,173 SF
STORIES:	3 Stories
YEAR BUILT:	1983
PARKING:	3.25 : 1,000

Free Surface Parking

### BUILDING HIGHLIGHTS:

- ALL-GLASS BUILDING
- ABUNDANT NATURAL LIGHT
- HIGH VISIBILITY FROM 120TH
- PREMIER OFFICE PARK LOCATION



## BUILDING AMENITIES

- Large Conference Facility
  - Abundant Parking!
  - Security System
  - Lush Landscaping
- 

## AREA AMENITIES

- Applebee's
- Cafe Rio Mexican Grill
- Chili's Grill & Bar
- Jersey Mike's Subs
- Kabob Station
- C.B & Potts
- Pita Pit
- MAD Greens
- Anthony's Pizza & Pasta
- Odooba Mexican Grill
- Starbucks
- Menchies Frozen Yogurt
- Delectable Egg
- Popeyes Kitchen
- Perkins Restaurant & Bakery
- Laguna's Restaurante
- Wendy's
- Village Inn
- Cracker Barrel
- Pizza Hut
- Kabob Station
- A Cake While You Wait
- 7-Eleven
- Cottonwood Suites
- Extended Stay America
- Super 8
- Fairfield Inn & Suites
- La Quinta Inn
- Ramada Plaza

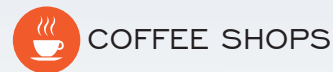
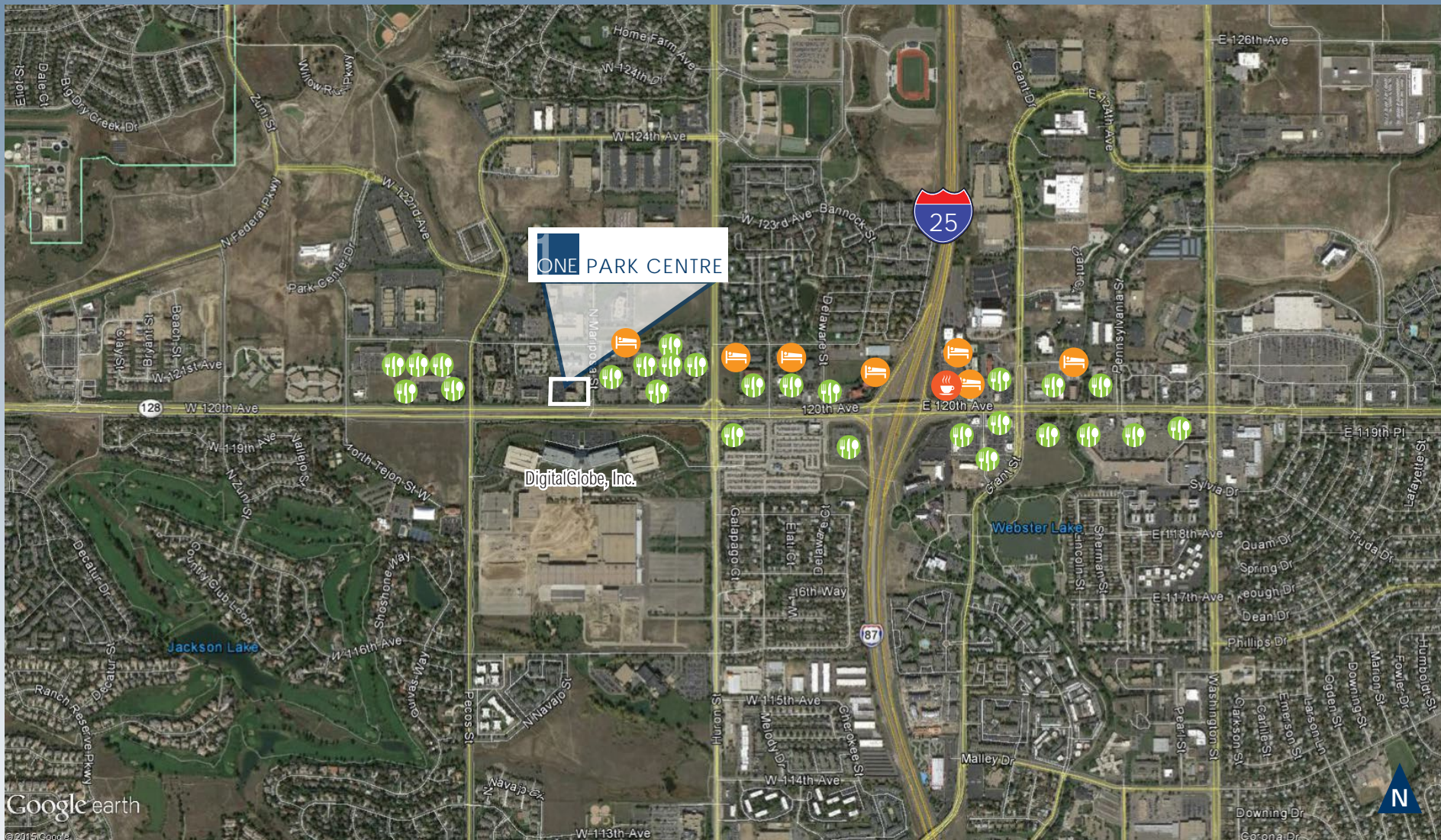
W. RYAN STOUT  
303 813 6448  
ryan.stout@cushwake.com

NATHAN J. BRADLEY  
303 813 6444  
nathan.bradley@cushwake.com

ZACHARY T. WILLIAMS  
303 813 6474  
zach.williams@cushwake.com



1/4 MILE FROM I-25 - ACCESS TO W 120TH AVE RESTAURANTS & HOTELS



W. RYAN STOUT  
303 813 6448  
ryan.stout@cushwake.com

NATHAN J. BRADLEY  
303 813 6444  
nathan.bradley@cushwake.com

ZACHARY T. WILLIAMS  
303 813 6474  
zach.williams@cushwake.com