

**FOR LEASE**

**8807 THORNTON RD., STE. L-1, STOCKTON, CA**

**±1,500 SF COMMERCIAL OFFICE**

LEASE RATE: \$1.50 psf MG per month



*Exclusively Listed By:*



**Suzanne Grande**

209.483.8999

Lic. 01080467

[Suzanne@partnerscommercialre.com](mailto:Suzanne@partnerscommercialre.com)

# FOR LEASE

## 8807 THORNTON RD., STE. L-1, STOCKTON, CA

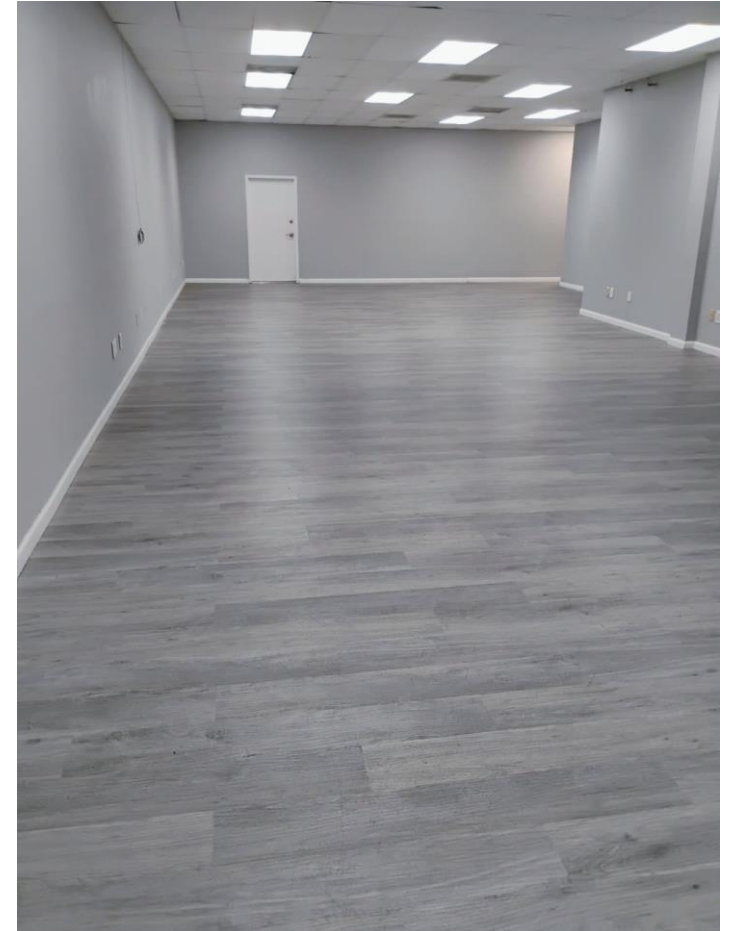
### ±1,500 SF COMMERCIAL OFFICE

LEASE RATE: \$1.50 psf MG per month

#### PROPERTY INFORMATION:

**Contact listing agent for more information or to tour**

- **Office Size:** ±1,500 SF
- **Lease Rate:** \$1.50 psf MG per month, tenant is responsible for utilities
- **Open Floor Plan**
- **Break Room w/ Full Kitchen**
- **ADA Restroom**
- **Ample Parking**
- **North Stockton Location**
- **Near Retail**



*All information found in this marketing package have been gathered from resources believed to be reliable. Brokers and Agents do not warrant, guarantee or represent the accuracy of the Information and recommend that all information be verified prior to a transaction.*

*Exclusively Listed By:*



**Suzanne Grande**

209.483.8999

Lic. 01080467

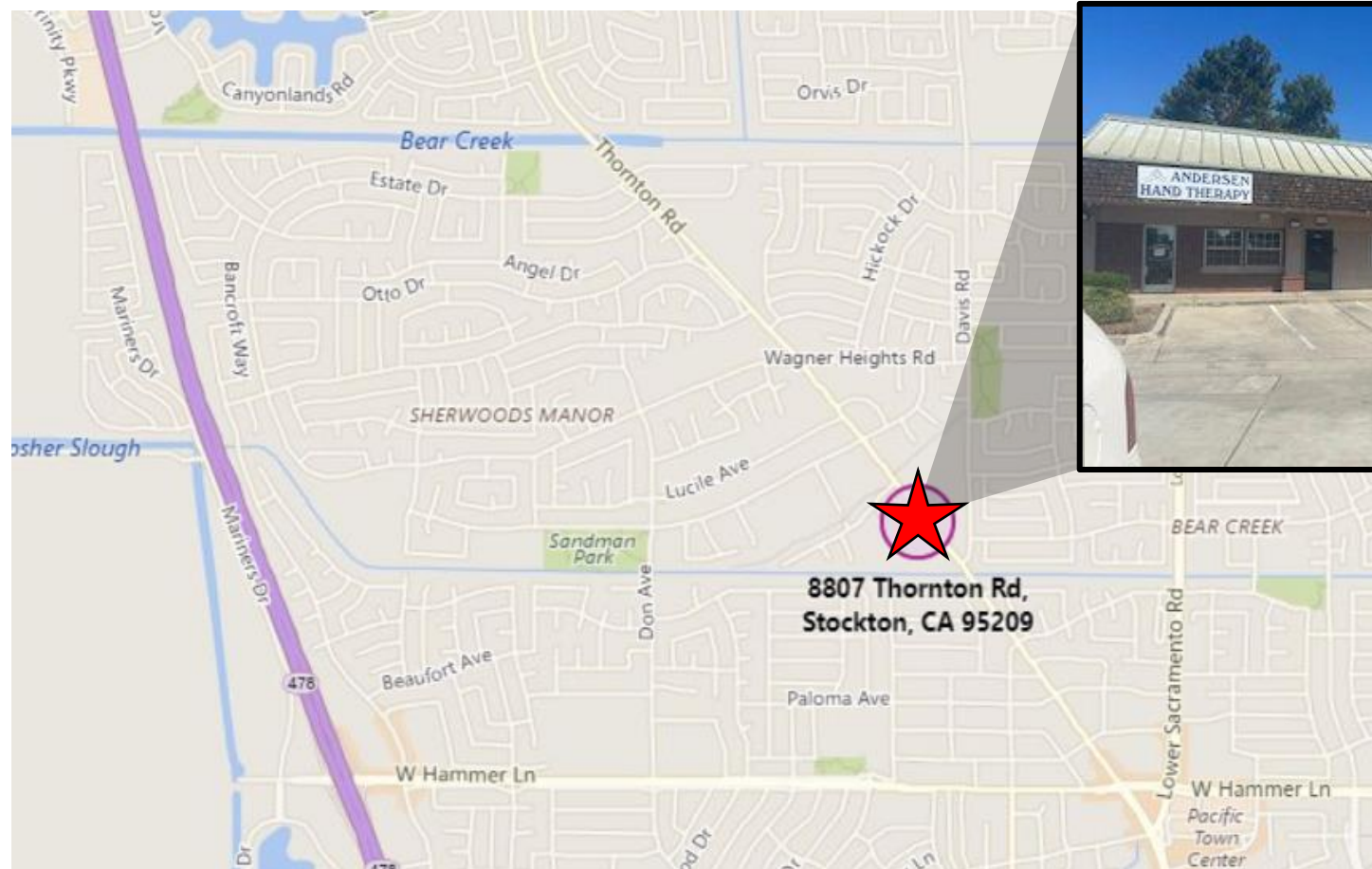
Suzanne@partnerscommercialre.com



# FOR LEASE

## 8807 THORNTON RD., STE. L-1, STOCKTON, CA ±1,500 SF COMMERCIAL OFFICE

LEASE RATE: \$1.50 psf MG per month



Exclusively Listed By:



**Suzanne Grande**

209.483.8999

Lic. 01080467

[Suzanne@partnerscommercialre.com](mailto:Suzanne@partnerscommercialre.com)