

# FOR SALE

## ±2,499 RSF MEDICAL OFFICE CONDO

## 2083 COMPTON AVE, SUITE 2202

CORONA, CA 92881



**GREG MARTIN**

D (909) 373-2904

gmartin@lee-assoc.com

DRE #01001749

**LEE & ASSOCIATES - ONTARIO**

3535 Inland Empire Boulevard

Ontario, CA 91764

(909) 989-7771 | lee-associates.com

**LEE &  
ASSOCIATES**

COMMERCIAL REAL ESTATE SERVICES  
ONTARIO

CORPORATE ID #00976995

All information furnished regarding property for sale, rental or financing is from sources deemed reliable, but no warranty or representation is made to the accuracy thereof and same is submitted to errors, omissions, change of price, rental or other conditions prior to sale, lease or financing or withdrawal without notice. No liability of any kind is to be imposed on the broker herein.



**FOR SALE**  
±2,499 RSF MEDICAL OFFICE CONDO

**2083 COMPTON AVENUE, SUITE 2202**  
CORONA, CA 92881

## PROPERTY HIGHLIGHTS

- Rare Medical Use Condo for Sale
- Professional Office Building
- Conveniently Located Near I-15 and CA-91 Freeways
- Strong Demographic Corona Market
- Low-maintenace Medical Condow
- Asking Price: \$1,235,000
- 10% Down Payment SBA Loan Possible

### GREG MARTIN

D (909) 373-2904  
gmartin@lee-assoc.com  
DRE #01001749

**LEE & ASSOCIATES - ONTARIO**  
3535 Inland Empire Boulevard  
Ontario, CA 91764  
(909) 989-7771 | lee-associates.com

**LEE & ASSOCIATES**  
COMMERCIAL REAL ESTATE SERVICES  
ONTARIO

CORPORATE ID #00976995

All information furnished regarding property for sale, rental or financing is from sources deemed reliable, but no warranty or representation is made to the accuracy thereof and same is submitted to errors, omissions, change of price, rental or other conditions prior to sale, lease or financing or withdrawal without notice. No liability of any kind is to be imposed on the broker herein.

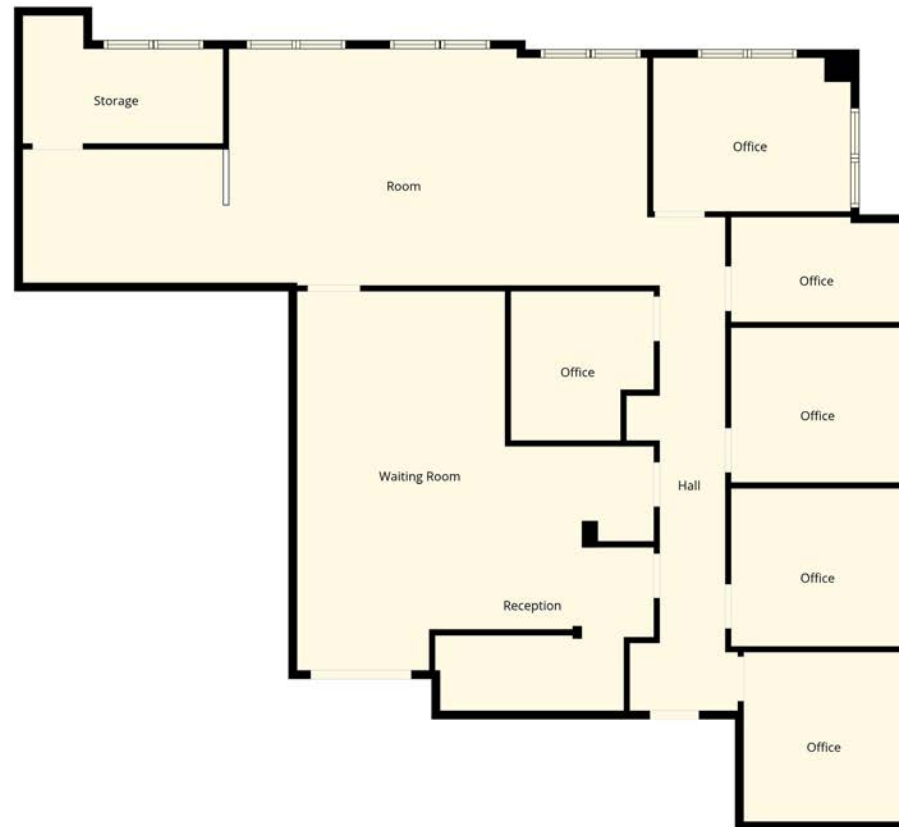
## FOR SALE

±2,499 RSF MEDICAL OFFICE CONDO

2083 COMPTON AVENUE, SUITE 2202

CORONA, CA 92881

### FLOOR PLAN SUITE 2202



Measurements Calculated Are Deemed Highly Reliable, But Not Guaranteed.

### GREG MARTIN

D (909) 373-2904  
gmartin@lee-assoc.com  
DRE #01001749

LEE & ASSOCIATES - ONTARIO  
3535 Inland Empire Boulevard  
Ontario, CA 91764  
(909) 989-7771 | lee-associates.com

**LEE &  
ASSOCIATES**  
COMMERCIAL REAL ESTATE SERVICES  
ONTARIO

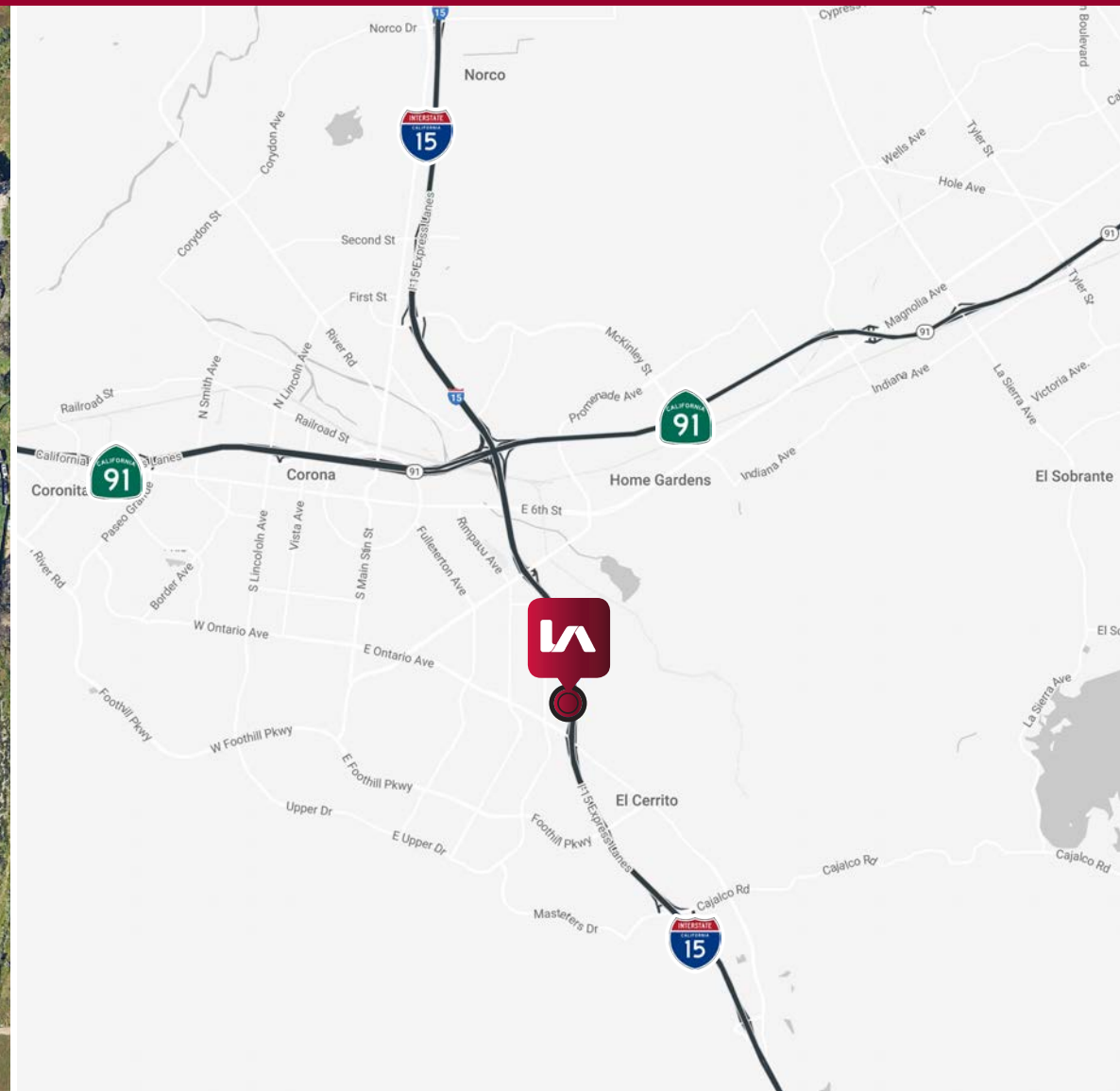
CORPORATE ID #00976995

All information furnished regarding property for sale, rental or financing is from sources deemed reliable, but no warranty or representation is made to the accuracy thereof and same is submitted to errors, omissions, change of price, rental or other conditions prior to sale, lease or financing or withdrawal without notice. No liability of any kind is to be imposed on the broker herein.



**FOR SALE**  
±2,499 RSF MEDICAL OFFICE CONDO

**2083 COMPTON AVENUE, SUITE 2202**  
CORONA, CA 92881



**GREG MARTIN**

D (909) 373-2904  
gmartin@lee-assoc.com  
DRE #01001749

**LEE & ASSOCIATES - ONTARIO**  
3535 Inland Empire Boulevard  
Ontario, CA 91764  
(909) 989-7771 | lee-associates.com

**LEE & ASSOCIATES**  
COMMERCIAL REAL ESTATE SERVICES  
ONTARIO

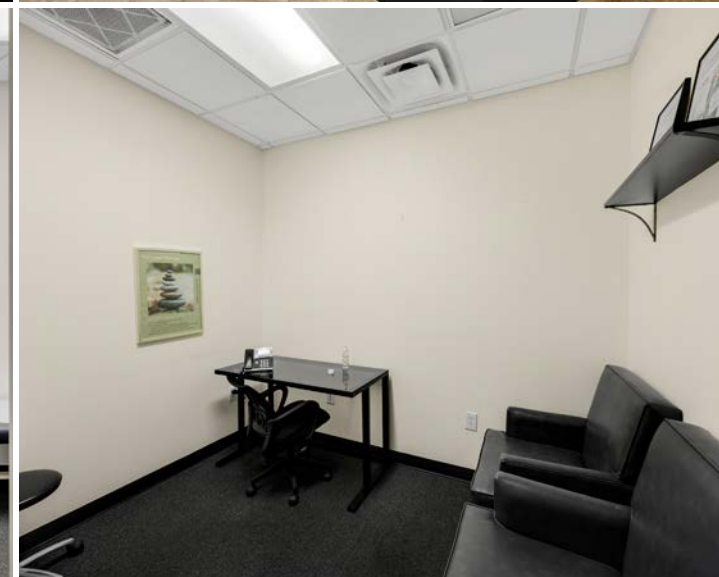
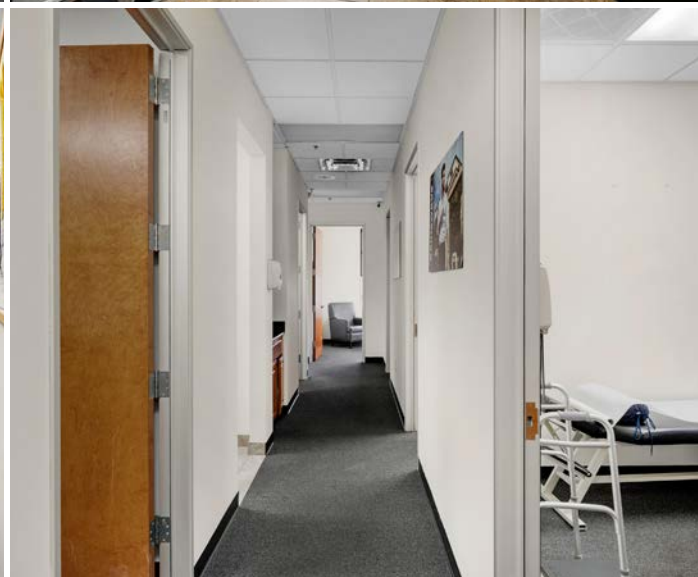
CORPORATE ID #00976995

All information furnished regarding property for sale, rental or financing is from sources deemed reliable, but no warranty or representation is made to the accuracy thereof and same is submitted to errors, omissions, change of price, rental or other conditions prior to sale, lease or financing or withdrawal without notice. No liability of any kind is to be imposed on the broker herein.



**FOR SALE**  
±2,499 RSF MEDICAL OFFICE CONDO

**2083 COMPTON AVENUE, SUITE 2202**  
CORONA, CA 92881



**GREG MARTIN**  
D (909) 373-2904  
gmartin@lee-assoc.com  
DRE #01001749

**LEE & ASSOCIATES - ONTARIO**  
3535 Inland Empire Boulevard  
Ontario, CA 91764  
(909) 989-7771 | lee-associates.com

**LEE & ASSOCIATES**  
COMMERCIAL REAL ESTATE SERVICES  
ONTARIO  
CORPORATE ID #00976995

All information furnished regarding property for sale, rental or financing is from sources deemed reliable, but no warranty or representation is made to the accuracy thereof and same is submitted to errors, omissions, change of price, rental or other conditions prior to sale, lease or financing or withdrawal without notice. No liability of any kind is to be imposed on the broker herein.

**FOR SALE**  
±2,499 RSF MEDICAL OFFICE CONDO

**2083 COMPTON AVENUE, SUITE 2202**  
CORONA, CA 92881



**GREG MARTIN**  
D (909) 373-2904  
gmartin@lee-assoc.com  
DRE #01001749

**LEE & ASSOCIATES - ONTARIO**  
3535 Inland Empire Boulevard  
Ontario, CA 91764  
(909) 989-7771 | lee-associates.com

**LEE & ASSOCIATES**  
COMMERCIAL REAL ESTATE SERVICES  
ONTARIO  
CORPORATE ID #00976995

All information furnished regarding property for sale, rental or financing is from sources deemed reliable, but no warranty or representation is made to the accuracy thereof and same is submitted to errors, omissions, change of price, rental or other conditions prior to sale, lease or financing or withdrawal without notice. No liability of any kind is to be imposed on the broker herein.



# 2083 COMPTON AVENUE

CORONA, CA 92881

## FOR MORE INFORMATION

### GREG MARTIN

D (909) 373-2904  
gmartin@lee-assoc.com  
DRE #01001749

### LEE & ASSOCIATES - ONTARIO

3535 Inland Empire Boulevard | Ontario, CA 91764  
(909) 989-7771 | lee-associates.com  
Corporate ID: 00976995



COMMERCIAL REAL ESTATE SERVICES  
ONTARIO

All information furnished regarding property for sale, rental or financing is from sources deemed reliable, but no warranty or representation is made to the accuracy thereof and same is submitted to errors, omissions, change of price, rental or other conditions prior to sale, lease or financing or withdrawal without notice. No liability of any kind is to be imposed on the broker herein.