
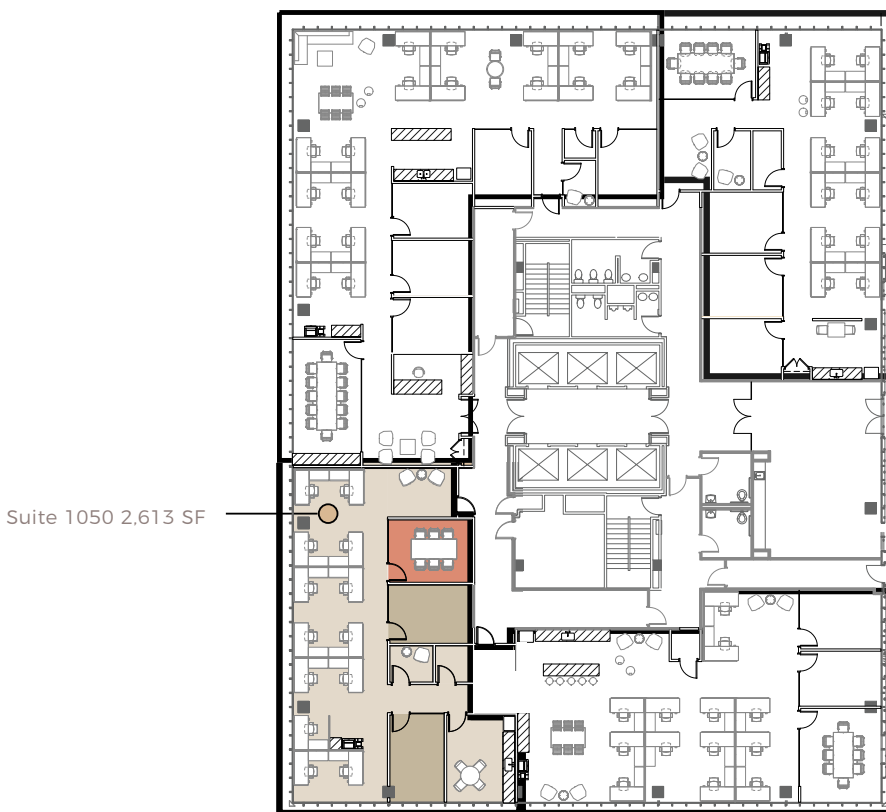


# Suite 1050

2,613 SF

515 CONGRESS  
a KBS property

 515 Congress Avenue, Austin, TX 78701



Open  
Office



Private  
Offices



Conference  
Rooms

FOR LEASING INFORMATION, PLEASE CONTACT:

Brad Philp  
(512) 481-3018  
bphilp@streamrealty.com

Brita Hovde  
(512) 481-3048  
brita.hovde@streamrealty.com

Cameron Grier  
(512) 481-3006  
cameron.grier@streamrealty.com

Proudly Leased and Managed by


  
STREAM

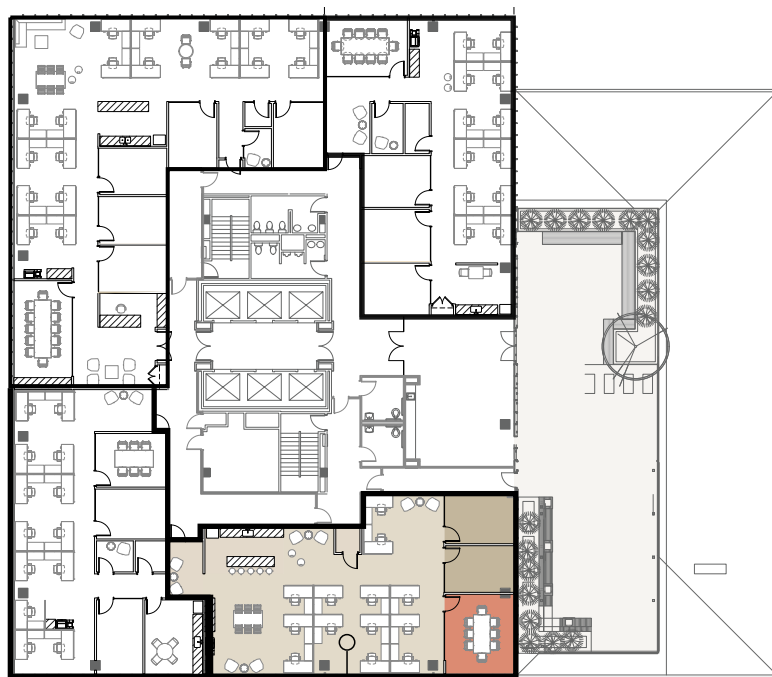
**KBS**

# Suite 1075

3,349 SF - Available 3.1.26

515 CONGRESS  
a KBS property

 515 Congress Avenue, Austin, TX 78701



Suite 1075 3,349 SF



Open  
Office



Private  
Offices



Conference  
Rooms

FOR LEASING INFORMATION, PLEASE CONTACT:

Brad Philp  
(512) 481-3018  
bphilp@streamrealty.com

Brita Hovde  
(512) 481-3048  
brita.hovde@streamrealty.com

Cameron Grier  
(512) 481-3006  
cameron.grier@streamrealty.com

Proudly Leased and Managed by

STREAM

**KBS**

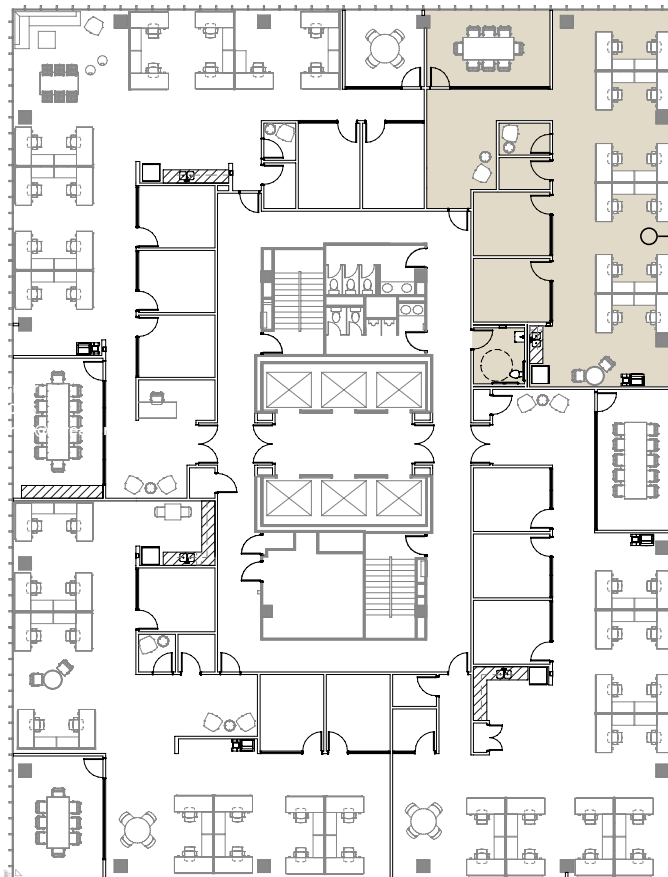
# Suite 1125

2,559 SF - Available in 30 Days

**515 CONGRESS**  
a **KBS** property



515 Congress Avenue, Austin, TX 78701



Suite 1125 - 2,559 SF

FOR LEASING INFORMATION, PLEASE CONTACT:

**Brad Philp**  
(512) 481-3018  
bphilp@streamrealty.com

**Brita Hovde**  
(512) 481-3048  
brita.hovde@streamrealty.com

**Cameron Grier**  
(512) 481-3006  
cameron.grier@streamrealty.com

*Proudly Leased and Managed by*


**STREAM**

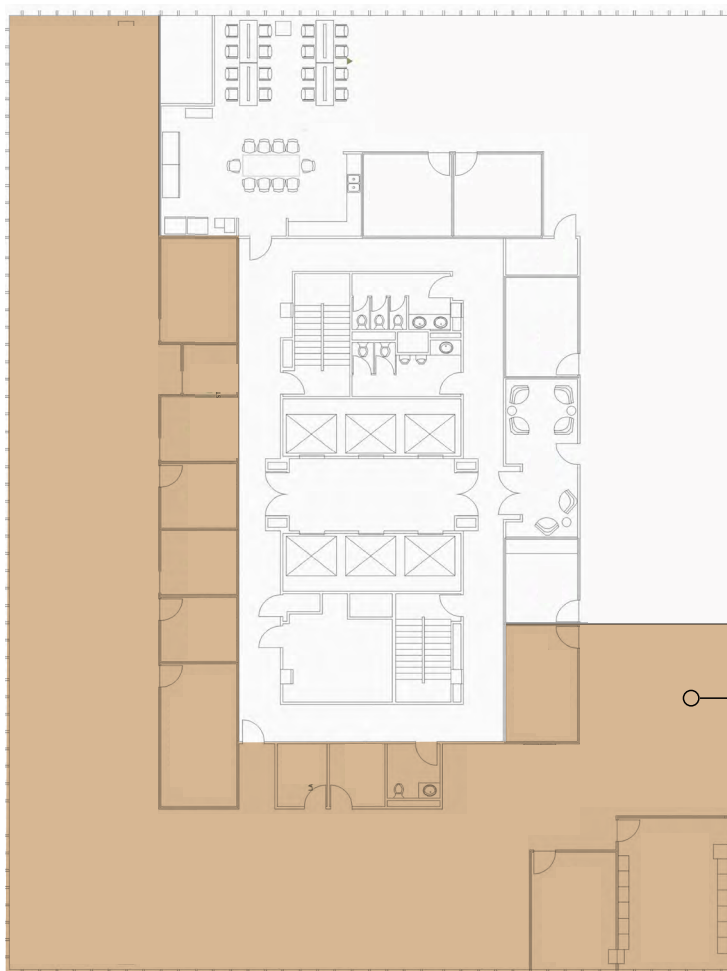
**KBS**

# Suite 1250

8,763 SF - Demisable

515 CONGRESS  
a **KBS** property

 515 Congress Avenue, Austin, TX 78701



Suite 1250 8,763 SF

Click to  
Take a  
Virtual  
Tour



FOR LEASING INFORMATION, PLEASE CONTACT:

Brad Philp  
(512) 481-3018  
bphilp@streamrealty.com

Brita Hovde  
(512) 481-3048  
brita.hovde@streamrealty.com

Cameron Grier  
(512) 481-3006  
cameron.grier@streamrealty.com

Proudly Leased and Managed by


  
**STREAM**

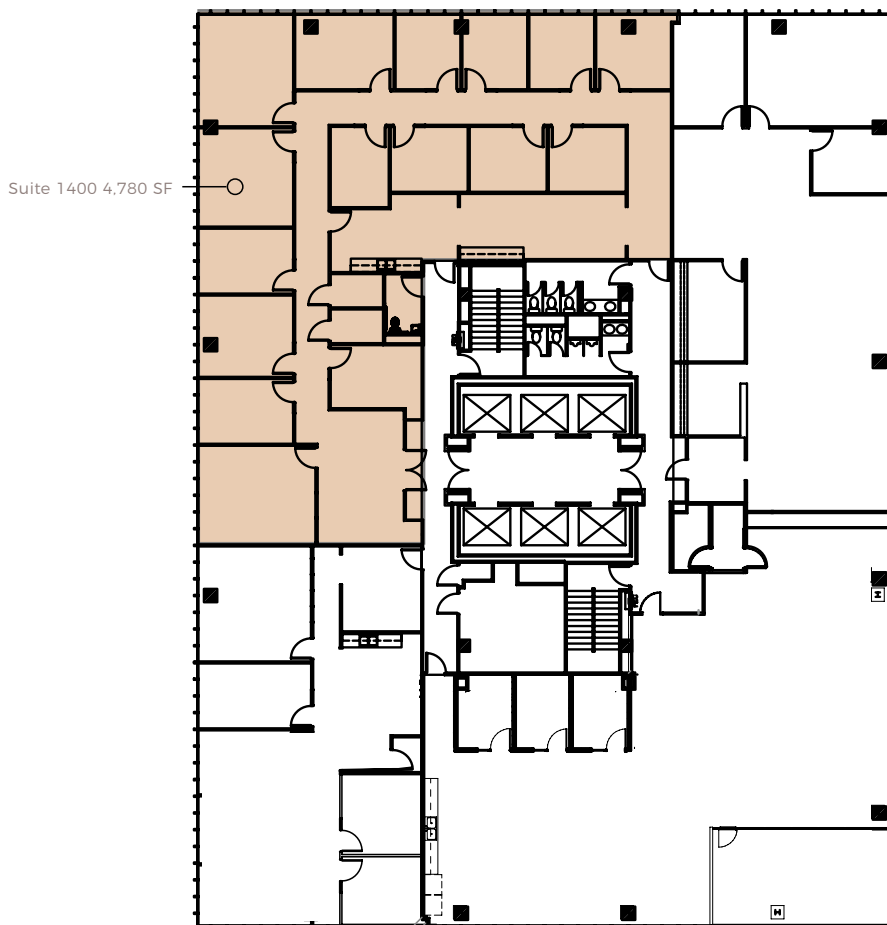
**KBS**

# Suite 1400

4,780 SF - Available 1.1.26

515 CONGRESS  
a KBS property

 515 Congress Avenue, Austin, TX 78701



Click to  
Take a  
Virtual  
Tour



FOR LEASING INFORMATION, PLEASE CONTACT:

Brad Philp  
(512) 481-3018  
bphilp@streamrealty.com

Brita Hovde  
(512) 481-3048  
brita.hovde@streamrealty.com

Cameron Grier  
(512) 481-3006  
cameron.grier@streamrealty.com

Proudly Leased and Managed by


  
STREAM

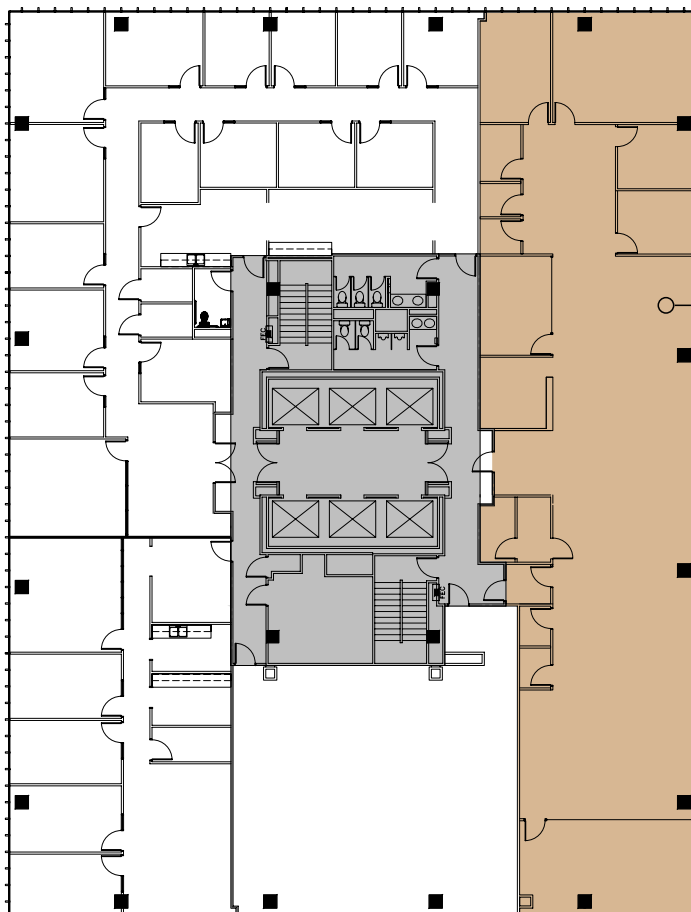
**KBS**

# Suite 1410

5,101 SF

515 CONGRESS  
a KBS property

 515 Congress Avenue, Austin, TX 78701



Suite 1410 5,101 SF

Click to  
Take a  
Virtual  
Tour



FOR LEASING INFORMATION, PLEASE CONTACT:

Brad Philp  
(512) 481-3018  
bphilp@streamrealty.com

Brita Hovde  
(512) 481-3048  
brita.hovde@streamrealty.com

Cameron Grier  
(512) 481-3006  
cameron.grier@streamrealty.com

Proudly Leased and Managed by


STREAM

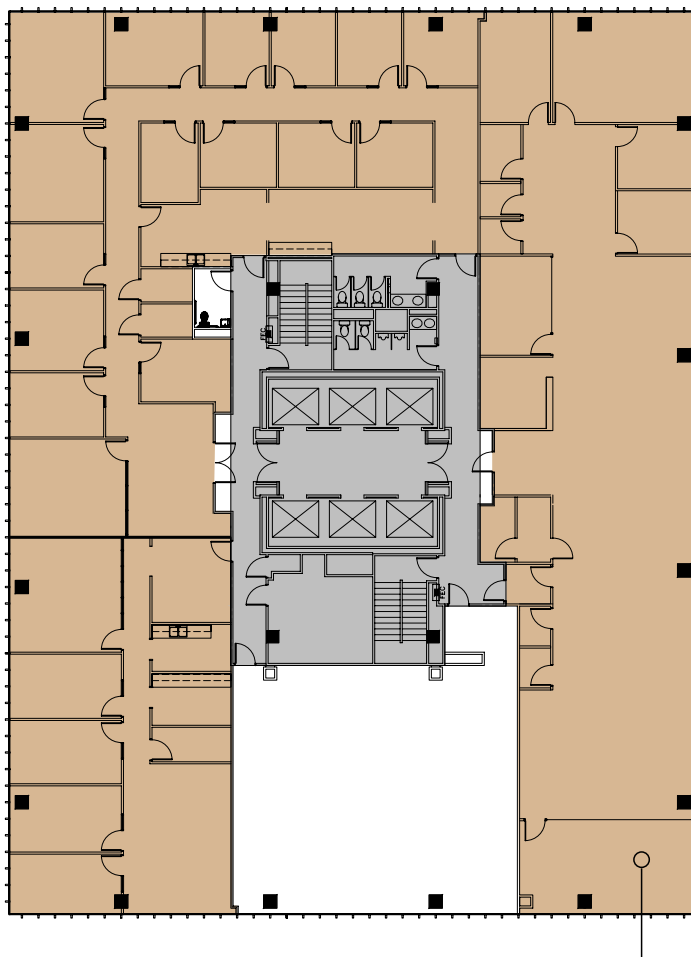
**KBS**

# Suite 1400, 1410

9,881 SF

515 CONGRESS  
a KBS property

 515 Congress Avenue, Austin, TX 78701



Suite 1400+1410 9,881 SF

FOR LEASING INFORMATION, PLEASE CONTACT:

Brad Philp  
(512) 481-3018  
bphilp@streamrealty.com

Brita Hovde  
(512) 481-3048  
brita.hovde@streamrealty.com

Cameron Grier  
(512) 481-3006  
cameron.grier@streamrealty.com

Proudly Leased and Managed by


 STREAM

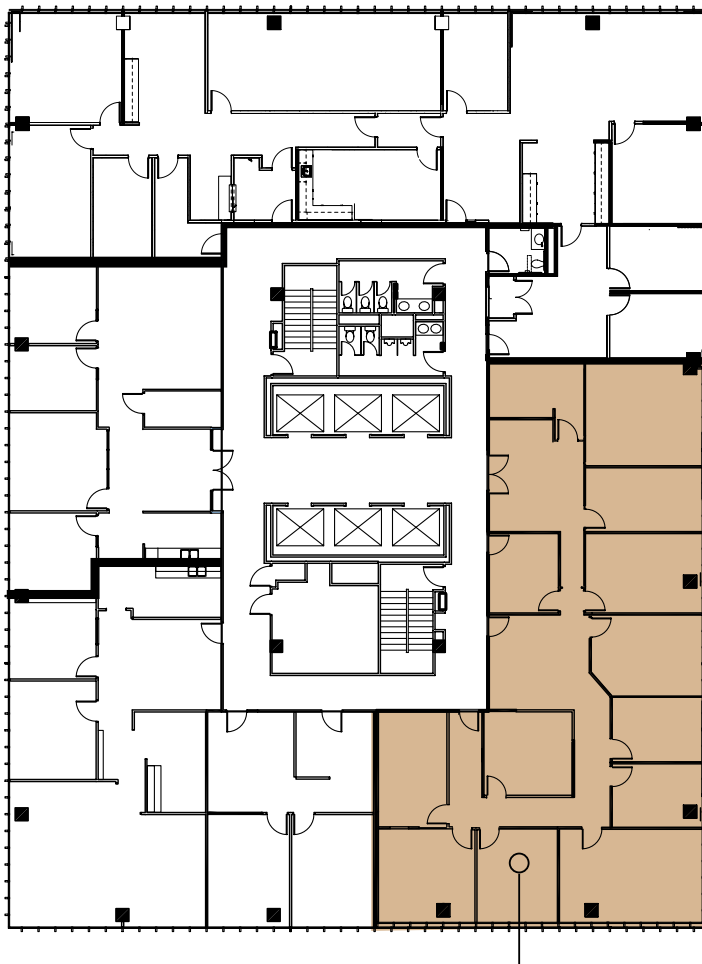
**KBS**

# Suite 1760

4,276 SF

515 CONGRESS  
a KBS property

 515 Congress Avenue, Austin, TX 78701



Suite 1760 4,276 SF

Click to  
Take a  
Virtual  
Tour



FOR LEASING INFORMATION, PLEASE CONTACT:

Brad Philp  
(512) 481-3018  
bphilp@streamrealty.com

Brita Hovde  
(512) 481-3048  
brita.hovde@streamrealty.com

Cameron Grier  
(512) 481-3006  
cameron.grier@streamrealty.com

Proudly Leased and Managed by

  
STREAM

**KBS**



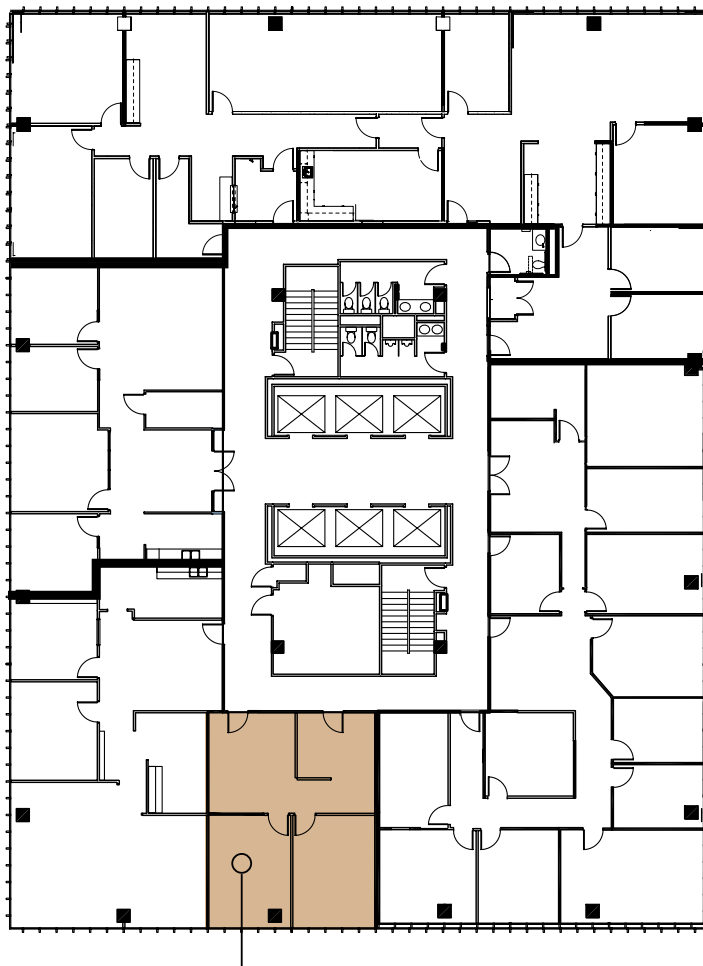
# Suite 1790

1,039 SF

515 CONGRESS  
a KBS property



515 Congress Avenue, Austin, TX 78701



Suite 1790 1,039 SF

FOR LEASING INFORMATION, PLEASE CONTACT:

Brad Philp  
(512) 481-3018  
bphilp@streamrealty.com

Brita Hovde  
(512) 481-3048  
brita.hovde@streamrealty.com

Cameron Grier  
(512) 481-3006  
cameron.grier@streamrealty.com

Proudly Leased and Managed by

STREAM

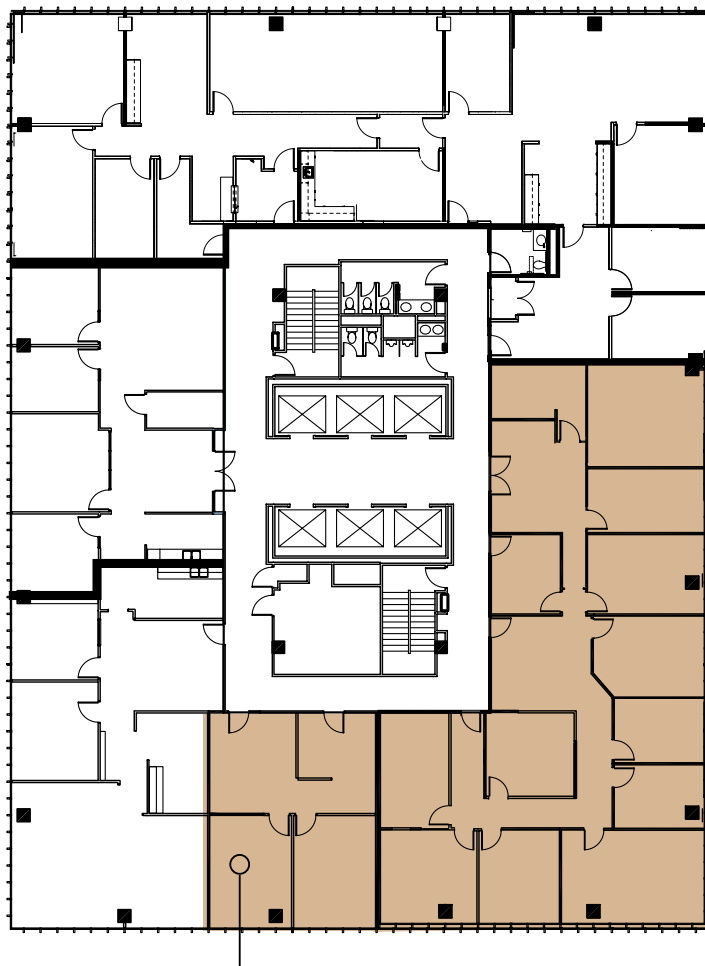
KBS

# Suite 1760+1790

5,315 SF

515 CONGRESS  
a KBS property

515 Congress Avenue, Austin, TX 78701



Suite 1760+1790 - 5,315 SF

FOR LEASING INFORMATION, PLEASE CONTACT:

Brad Philp  
(512) 481-3018  
bphilp@streamrealty.com

Brita Hovde  
(512) 481-3048  
brita.hovde@streamrealty.com

Cameron Grier  
(512) 481-3006  
cameron.grier@streamrealty.com

Proudly Leased and Managed by

STREAM

KBS

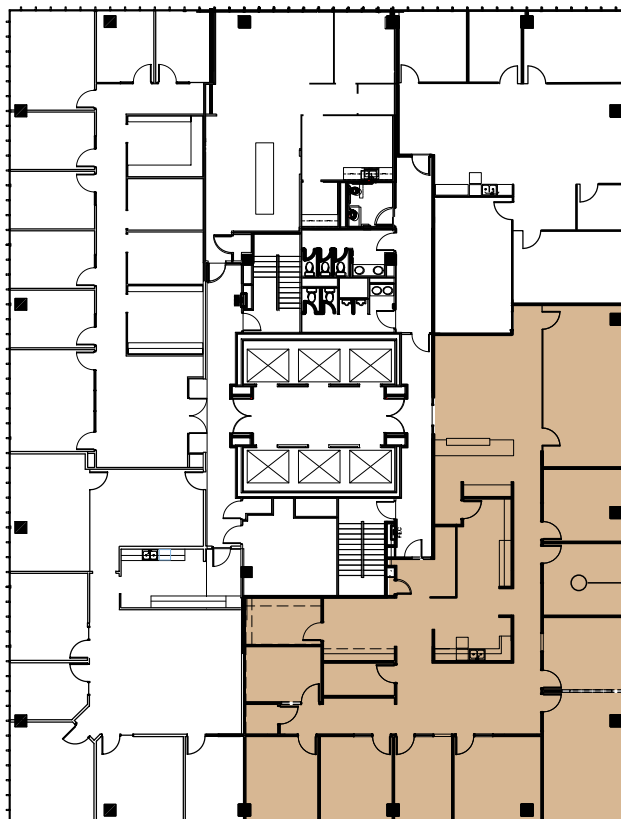
# Suite 1900

4,925 SF - Available August 1, 2026

515 CONGRESS  
a KBS property



515 Congress Avenue, Austin, TX 78701



Suite 1900: 4,925 SF

FOR LEASING INFORMATION, PLEASE CONTACT:

Brad Philp  
(512) 481-3018  
bphilp@streamrealty.com

Brita Hovde  
(512) 481-3048  
brita.hovde@streamrealty.com

Cameron Grier  
(512) 481-3006  
cameron.grier@streamrealty.com

Proudly Leased and Managed by

STREAM

KBS

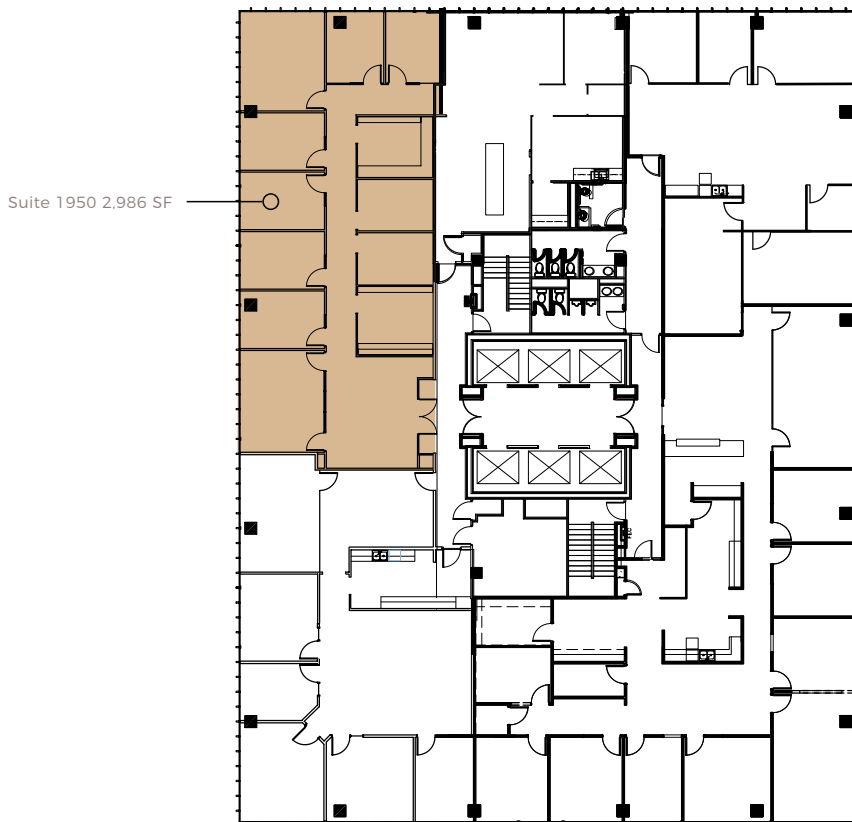
# Suite 1950

2,986 SF

515 CONGRESS  
a KBS property



515 Congress Avenue, Austin, TX 78701



Click to  
Take a  
Virtual  
Tour



FOR LEASING INFORMATION, PLEASE CONTACT:

Brad Philp  
(512) 481-3018  
bphilp@streamrealty.com

Brita Hovde  
(512) 481-3048  
brita.hovde@streamrealty.com

Cameron Grier  
(512) 481-3006  
cameron.grier@streamrealty.com

Proudly Leased and Managed by

STREAM

KBS

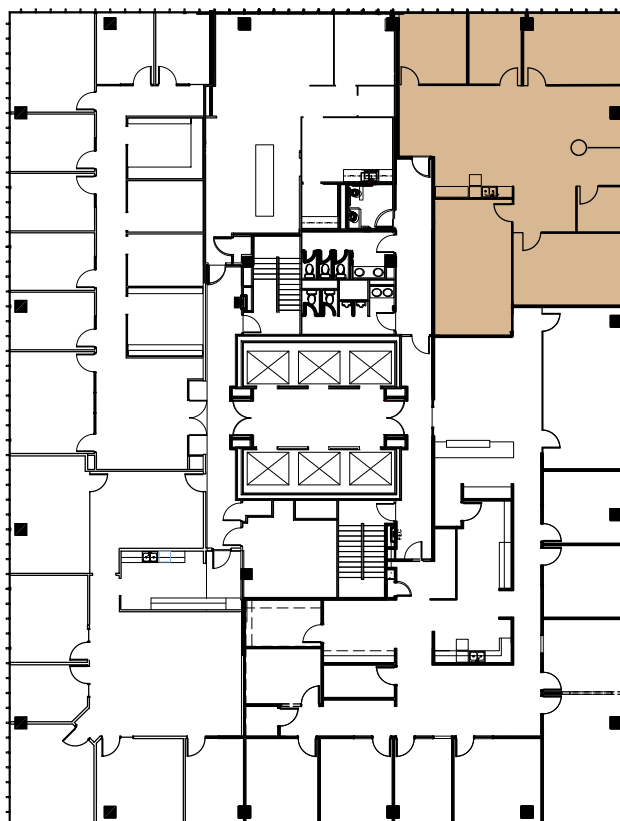
# Suite 1985

2,174 SF - Available in 30 days

**515 CONGRESS**  
a **KBS** property



515 Congress Avenue, Austin, TX 78701



Suite 1985 2,174 SF

FOR LEASING INFORMATION, PLEASE CONTACT:

**Brad Philp**  
(512) 481-3018  
bphilp@streamrealty.com

**Brita Hovde**  
(512) 481-3048  
brita.hovde@streamrealty.com

**Cameron Grier**  
(512) 481-3006  
cameron.grier@streamrealty.com

*Proudly Leased and Managed by*

**STREAM**

**KBS**

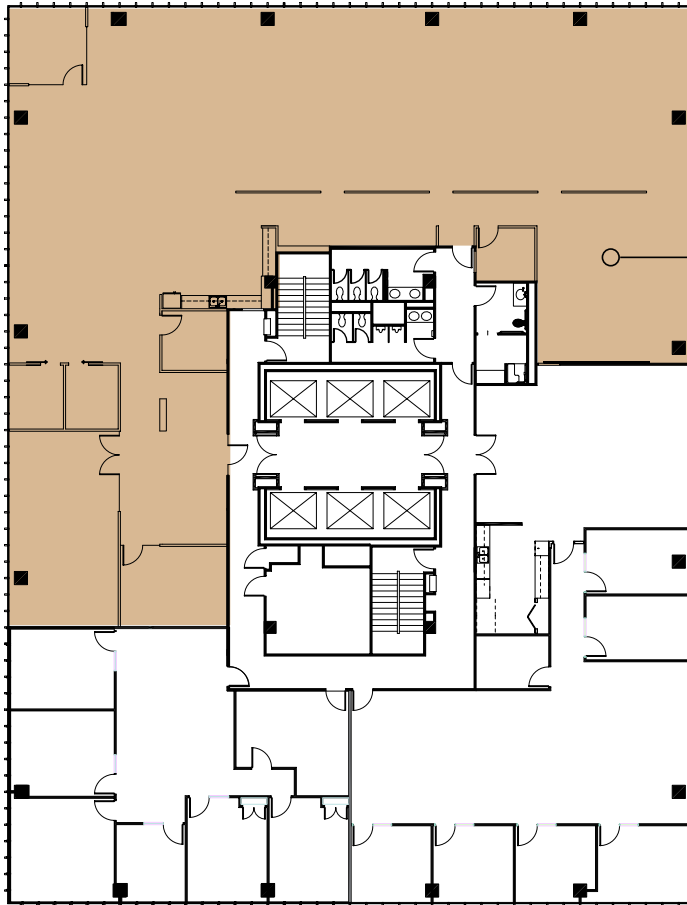
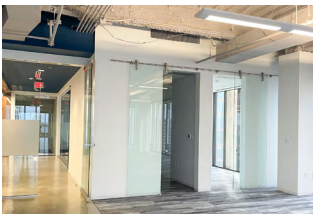
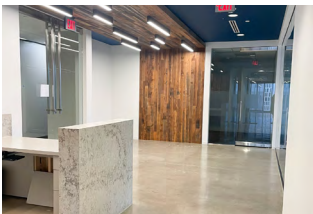
# Suite 2100

7,131 SF

515 CONGRESS  
a KBS property



515 Congress Avenue, Austin, TX 78701



Suite 2100 7,131 SF

Click to  
Take a  
Virtual  
Tour



FOR LEASING INFORMATION, PLEASE CONTACT:

Brad Philp  
(512) 481-3018  
bphilp@streamrealty.com

Brita Hovde  
(512) 481-3048  
brita.hovde@streamrealty.com

Cameron Grier  
(512) 481-3006  
cameron.grier@streamrealty.com

Proudly Leased and Managed by

STREAM

KBS

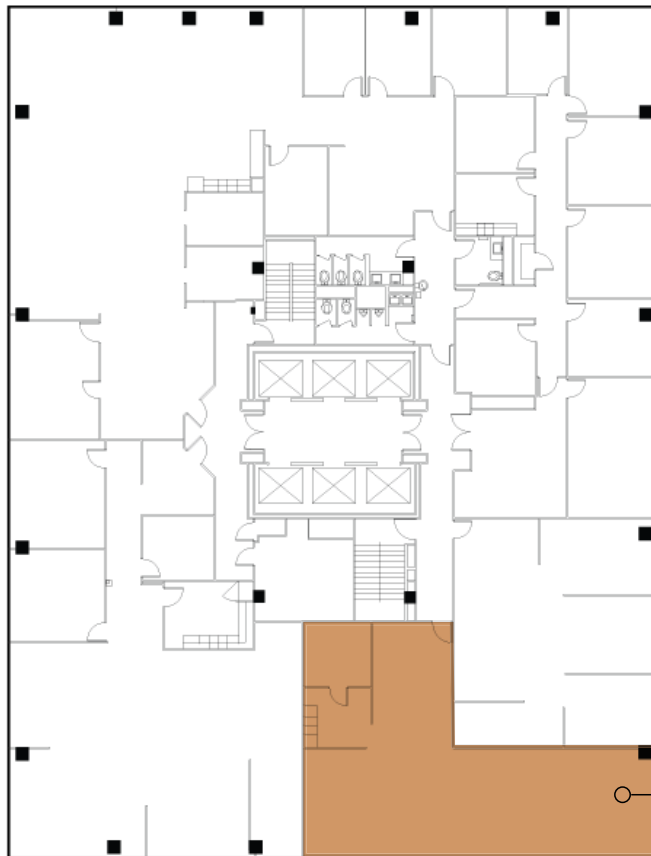
# Suite 2220

1,905 SF - Available 7.1.26

515 CONGRESS  
a KBS property



515 Congress Avenue, Austin, TX 78701



○ Suite 2220 1,905 SF

FOR LEASING INFORMATION, PLEASE CONTACT:

Brad Philp  
(512) 481-3018  
bphilp@streamrealty.com

Brita Hovde  
(512) 481-3048  
brita.hovde@streamrealty.com

Cameron Grier  
(512) 481-3006  
cameron.grier@streamrealty.com

Proudly Leased and Managed by

STREAM

KBS

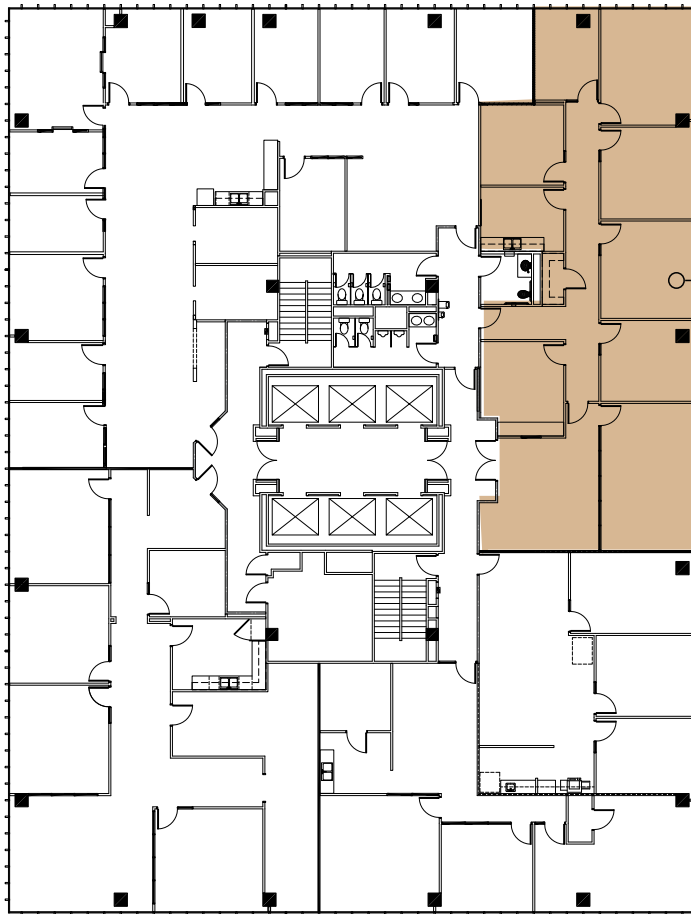
# Suite 2250

3,150 SF

515 CONGRESS  
a KBS property



515 Congress Avenue, Austin, TX 78701



Suite 2250 3,150 SF

Click to  
Take a  
Virtual  
Tour



FOR LEASING INFORMATION, PLEASE CONTACT:

Brad Philp  
(512) 481-3018  
bphilp@streamrealty.com

Brita Hovde  
(512) 481-3048  
brita.hovde@streamrealty.com

Cameron Grier  
(512) 481-3006  
cameron.grier@streamrealty.com

Proudly Leased and Managed by

STREAM


KBS



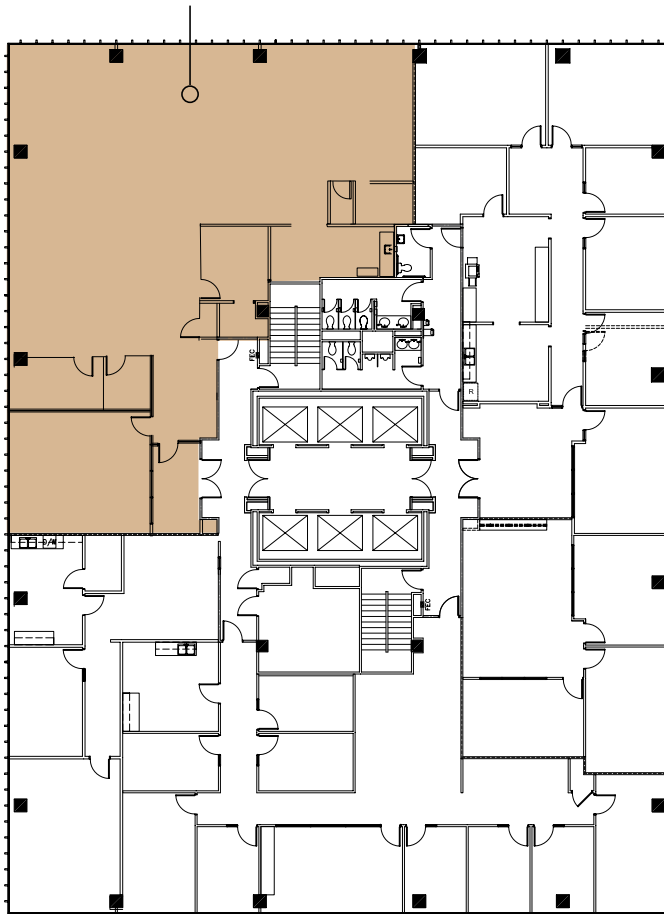
# Suite 2300

4,426 SF - Available 2.1.26

515 CONGRESS  
a KBS property

 515 Congress Avenue, Austin, TX 78701

Suite 2300 4,426 SF



FOR LEASING INFORMATION, PLEASE CONTACT:

Brad Philp  
(512) 481-3018  
bphilp@streamrealty.com

Brita Hovde  
(512) 481-3048  
brita.hovde@streamrealty.com

Cameron Grier  
(512) 481-3006  
cameron.grier@streamrealty.com

Proudly Leased and Managed by


 STREAM

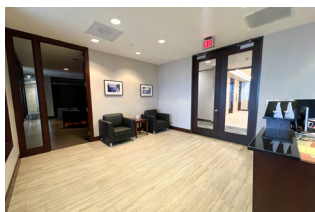
**KBS**

# Suites 2300, 2325

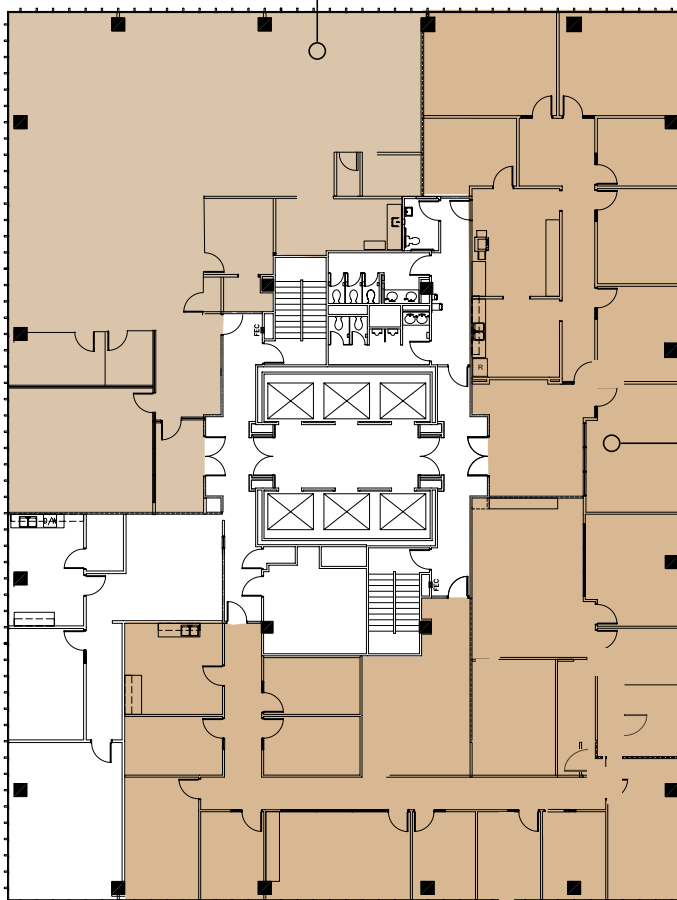
12,750 SF - Demisable

**515 CONGRESS**  
a **KBS** property

 515 Congress Avenue, Austin, TX 78701



Suite 2300 4,426 SF



Suite 2325 8,324 SF

Click to  
Take a  
Virtual  
Tour of  
Suite 2325



FOR LEASING INFORMATION, PLEASE CONTACT:

**Brad Philp**  
(512) 481-3018  
bphilp@streamrealty.com

**Brita Hovde**  
(512) 481-3048  
brita.hovde@streamrealty.com

**Cameron Grier**  
(512) 481-3006  
cameron.grier@streamrealty.com

*Proudly Leased and Managed by*

**STREAM**

**KBS**