

# BALDY VIEW RESIDENTIAL LAND SITE

Totaling Approximately 50 Acres

For Sale



PARCEL OUTLINE



ESTIMATED USABLE AREA



CUSHMAN &  
WAKEFIELD





SITE OVERVIEW

SITE SIZE	50.65 Acres
LOCATION	Baldy View Lane & Deadmond Ferry Road
ESTIMATED USABLE AREA	35± Acres

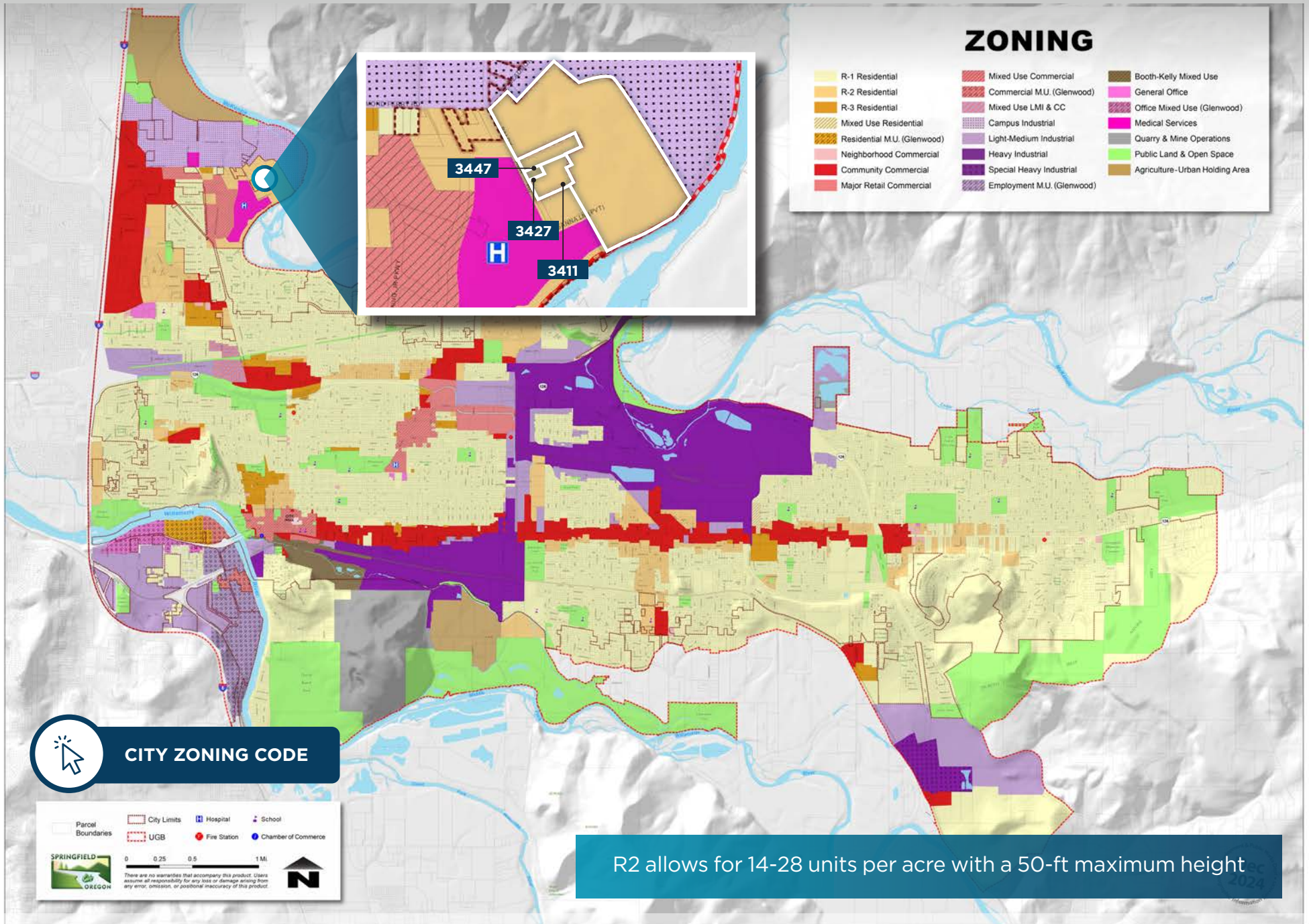
City of Springfield  
Zoning Information

- The land sites are zoned for medium density residential. The maximum height is 50 feet which would accommodate a 3-story building. The maximum density is 24 units per acre.
- The R-2 zoning is flexible and includes a range of multi-family uses, including, duplex, triplex, fourplex, townhouses, cottage cluster housing as well as others, including residential care facility, senior living and childcare center.



# City of Springfield Zoning Map

BALDY VIEW RESIDENTIAL  
LAND SITE





# BALDY VIEW RESIDENTIAL LAND SITE

Totaling Approximately 50 Acres



For more information, please contact Mark Carnese

**Mark Carnese**  
Executive Managing Director  
+1 503 279 1764  
[mark.carnese@cushwake.com](mailto:mark.carnese@cushwake.com)

©2025 Cushman & Wakefield. All rights reserved. The information contained in this communication is strictly confidential. This information has been obtained from sources believed to be reliable but has not been verified. NO WARRANTY OR REPRESENTATION, EXPRESS OR IMPLIED, IS MADE AS TO THE CONDITION OF THE PROPERTY (OR PROPERTIES) REFERENCED HEREIN OR AS TO THE ACCURACY OR COMPLETENESS OF THE INFORMATION CONTAINED HEREIN, AND SAME IS SUBMITTED SUBJECT TO ERRORS, OMISSIONS, CHANGE OF PRICE, RENTAL OR OTHER CONDITIONS, WITHDRAWAL WITHOUT NOTICE, AND TO ANY SPECIAL LISTING CONDITIONS IMPOSED BY THE PROPERTY OWNER(S). ANY PROJECTIONS, OPINIONS OR ESTIMATES ARE SUBJECT TO UNCERTAINTY AND DO NOT SIGNIFY CURRENT OR FUTURE PROPERTY PERFORMANCE.

