

FOR SUBLEASE - Warehouse

2714 SE Otis Corley Dr, Bentonville, AR 72712



\$12.75 PSF NNN



±40,424 SF Total

Warehouse + Showroom/Office



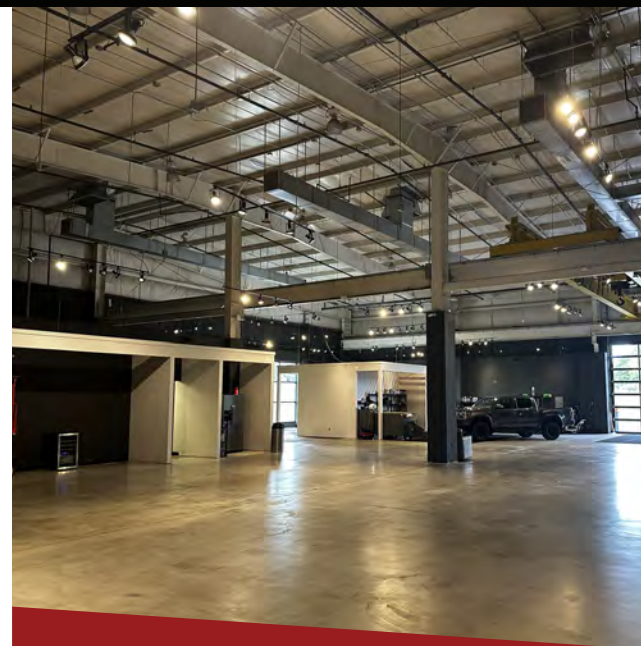
Location is within minutes of Downtown Bentonville & the new Walmart Global Headquarters



**3 Dock High Doors
1 Drive-In Door
24' Clear Height
30' Peak Height**



Term Expires 2029



FOR INFORMATION

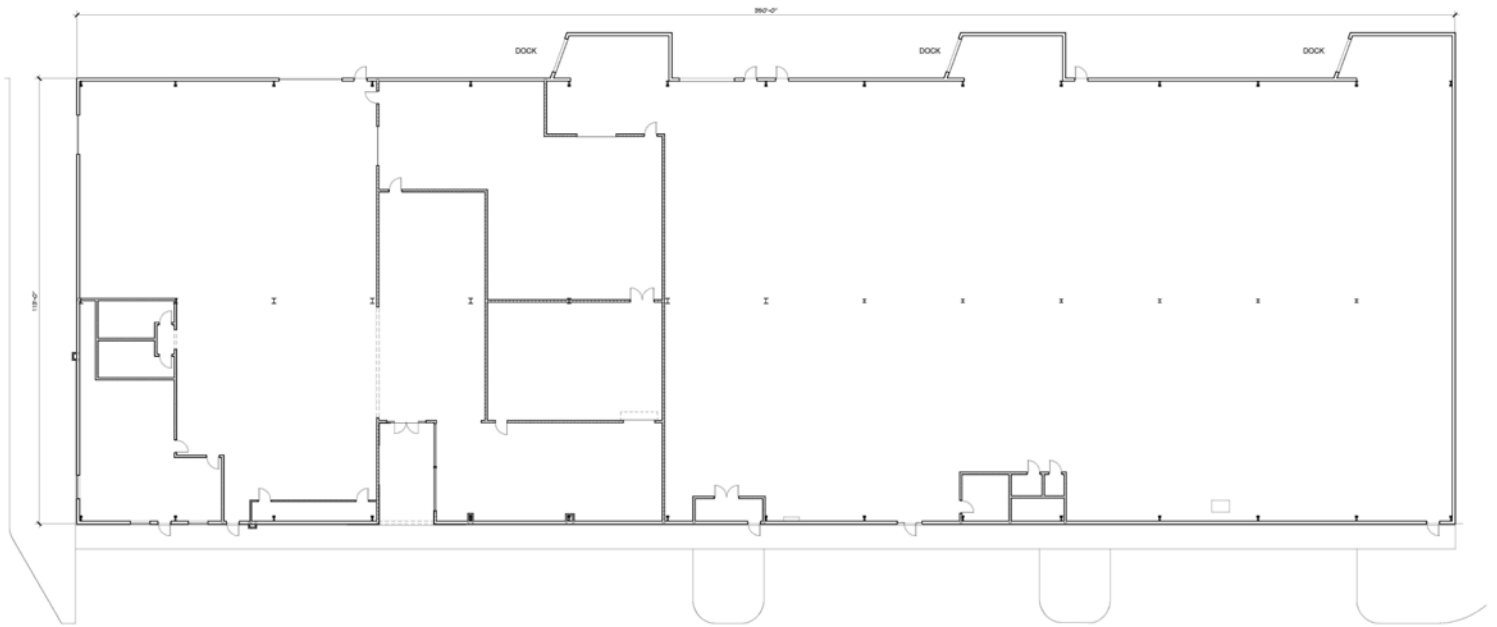
Kyle Conrad

Brokerage Associate

kyle@focuscregroup.com

479.462.4828

FLOOR PLAN



PICTURES

