

RETAIL PROPERTY FOR LEASE

# Cape Fear Plaza

342 N. Eastern Blvd, Fayetteville, NC 28301



*for more information*

VISHAL NANDWANI

Broker

O: 910.829.1617

C: 910.578.4797

vishal@grantmurrayre.com

PATRICK MURRAY, CCIM, SIOR

Principal / Broker in Charge

O: 910.829.1617

C: 910.988.5284

patrick@grantmurrayre.com



**Grant - Murray**  
REAL ESTATE, LLC

COMMERCIAL AND INVESTMENT BROKERAGE

150 N. McPherson Church Rd | Fayetteville, NC 28303 | [www.grantmurrayre.com](http://www.grantmurrayre.com)



## PROPERTY OVERVIEW

<b>Available SF:</b>	1,050 SF
<b>Lease Rate:</b>	\$12.00 SF/yr (NNN)
<b>TICAM/SF:</b>	\$2.19/SF
<b>Lot Size:</b>	8.87 Acres
<b>Year Built/Renovated:</b>	1985/2013
<b>Building Size:</b>	115,842 SF
<b>Zoning:</b>	CC
<b>Traffic Count:</b>	28,236

## property description

The Cape Fear Plaza shopping center is a large community center anchored by numerous national tenants, including Food Lion, Roses Express, Rainbow, Shoe Show, CitiTrends, Dollar Tree, Pizza Hut, and many others. The center has great access from multiple streets and excellent visibility. The property benefits greatly from the 23,000+ residents in a three-mile radius as well as the 49,000+ daytime population within three miles.

## Property Description

**THE CAPE FEAR PLAZA SHOPPING CENTER IS A LARGE COMMUNITY CENTER ANCHORED BY NUMEROUS NATIONAL TENANTS TO INCLUDE FOOD LION, ROSES EXPRESS, RAINBOW, SHOE SHOW, CITITRENDS, DOLLAR TREE, PIZZA HUT, AND MANY OTHERS. THE CENTER HAS GREAT ACCESS FROM MULTIPLE STREETS AND EXCELLENT VISIBILITY. THE PROPERTY BENEFITS GREATLY FROM THE 23,000+ RESIDENTS IN A THREE MILE RADIUS AS WELL AS A 49,000+ DAYTIME POPULATION WITHIN THREE**





for more information

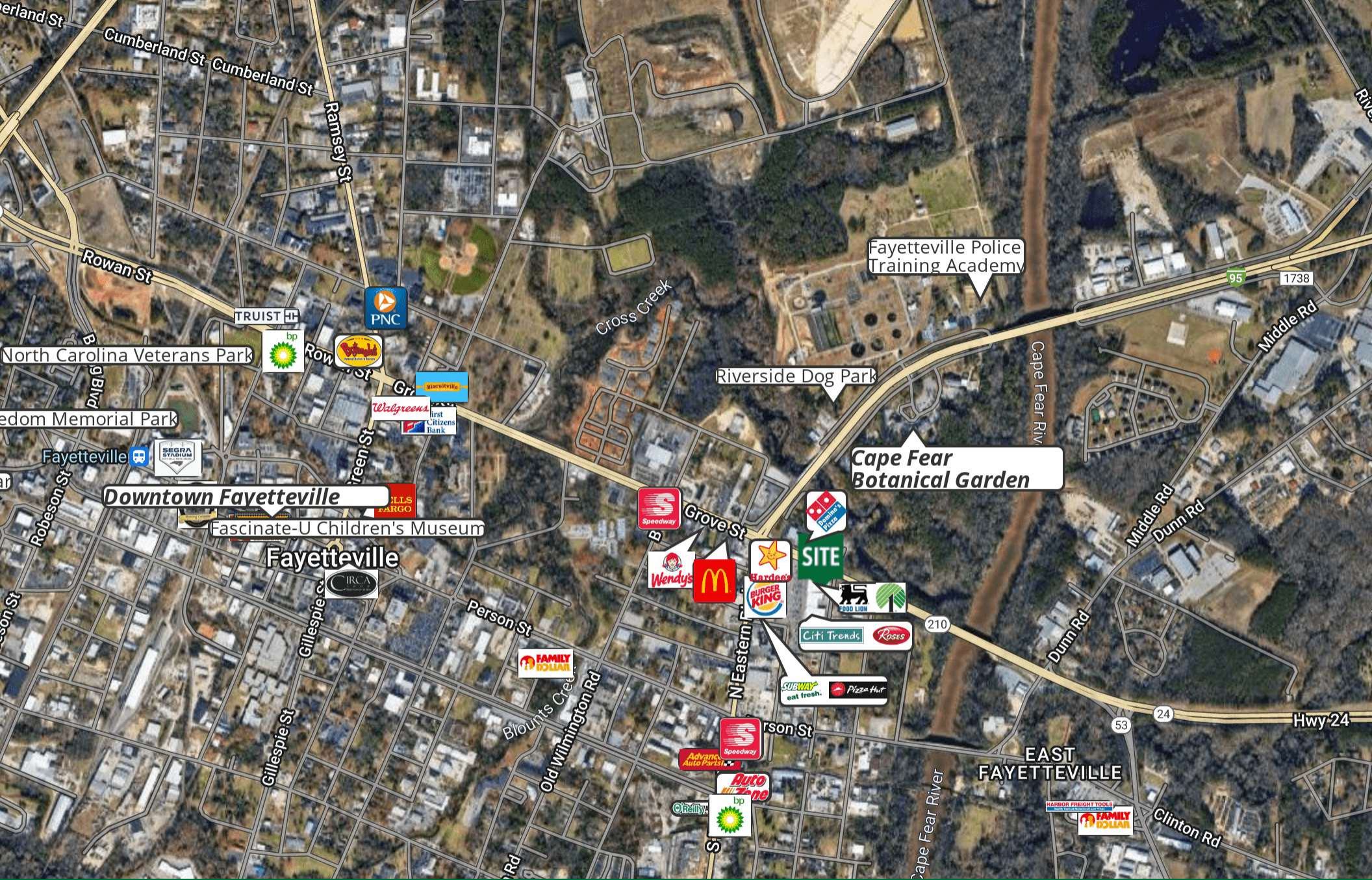
VISHAL NANDWANI  
 Broker  
 O: 910.829.1617  
 C: 910.578.4797  
 vishal@grantmurrayre.com

PATRICK MURRAY, CCIM, SIOR  
 Principal / Broker in Charge  
 O: 910.829.1617  
 C: 910.988.5284  
 patrick@grantmurrayre.com



**Grant - Murray**  
 REAL ESTATE, LLC  
 COMMERCIAL AND INVESTMENT BROKERAGE





for more information

VISHAL NANDWANI  
 Broker  
 O: 910.829.1617  
 C: 910.578.4797  
 vishal@grantmurrayre.com

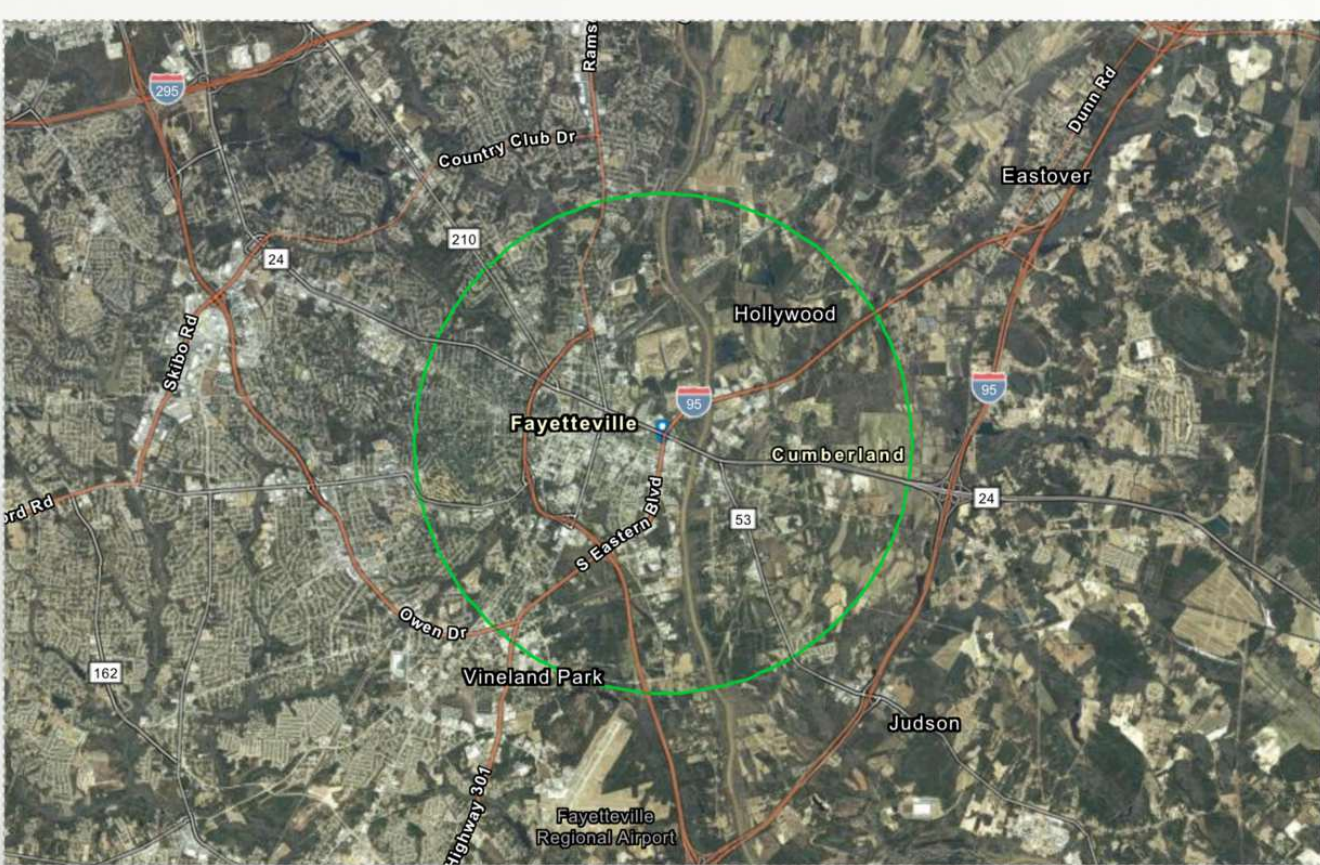
PATRICK MURRAY, CCIM, SIOB  
 Principal / Broker in Charge  
 O: 910.829.1617  
 C: 910.988.5284  
 patrick@grantmurrayre.com



**Grant - Murray**  
 REAL ESTATE, LLC  
 COMMERCIAL AND INVESTMENT BROKERAGE

150 N. McPherson Church Rd | Fayetteville, NC 28303 | [www.grantmurrayre.com](http://www.grantmurrayre.com)





EDUCATION



No High School Diploma



25%

High School Graduate



29%

Bachelors/Grad/Prof Degree

EMPLOYMENT



59%

White Collar



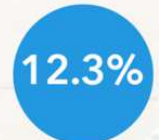
26%

Blue Collar



15%

Services



Unemployment Rate

KEY FACTS



23,687  
Total Population



9,747  
Total Households



\$40,654  
Median Household Income



Median Age

BUSINESS



2,162  
Total Businesses



30,695  
Total Employees

INCOME



\$35,359  
Median Disposable Income



\$27,549  
Per Capita Income



\$21,095  
Median Net Worth

Source: This infographic contains data provided by Esri (2023, 2028), Esri-Data Axle (2023).

©2024 Esri

Page 2 of 3

January 5, 2024

for more information

VISHAL NANDWANI  
Broker  
O: 910.829.1617  
C: 910.578.4797  
vishal@grantmurrayre.com

PATRICK MURRAY, CCIM, SIOR  
Principal / Broker in Charge  
O: 910.829.1617  
C: 910.988.5284  
patrick@grantmurrayre.com



Grant - Murray  
REAL ESTATE, LLC  
COMMERCIAL AND INVESTMENT BROKERAGE

150 N. McPherson Church Rd | Fayetteville, NC 28303 | www.grantmurrayre.com

# APPLY NOW!

342 N Eastern Blvd, Fayetteville, NC 28301

---

## Patrick Murray

 (910) 829-1617  patrick@grantmurrayre.com

Patrick Murray NC #231098

### You will submit:

Rental Application

TransUnion Screening 

- Credit Report & Score
- Criminal Background Check
- Eviction Related Proceedings



Scan to apply  
or visit:

<https://apply.link/48oaEHK>



### Screening with RentSpree is a no-brainer

1. No damage to credit score (Soft credit inquiry)
2. Screening reports are instantly pulled and shared
3. Sensitive personal information is protected
4. The application is saved making it easier to re-apply

If you have any questions or issues, contact [support@rentspree.com](mailto:support@rentspree.com).