

LAND
.... for
SALE



Prime Development Opportunity

35.5 Acres in
Sharon Township

We are pleased to present a prime development opportunity in the heart of Sharon Township.

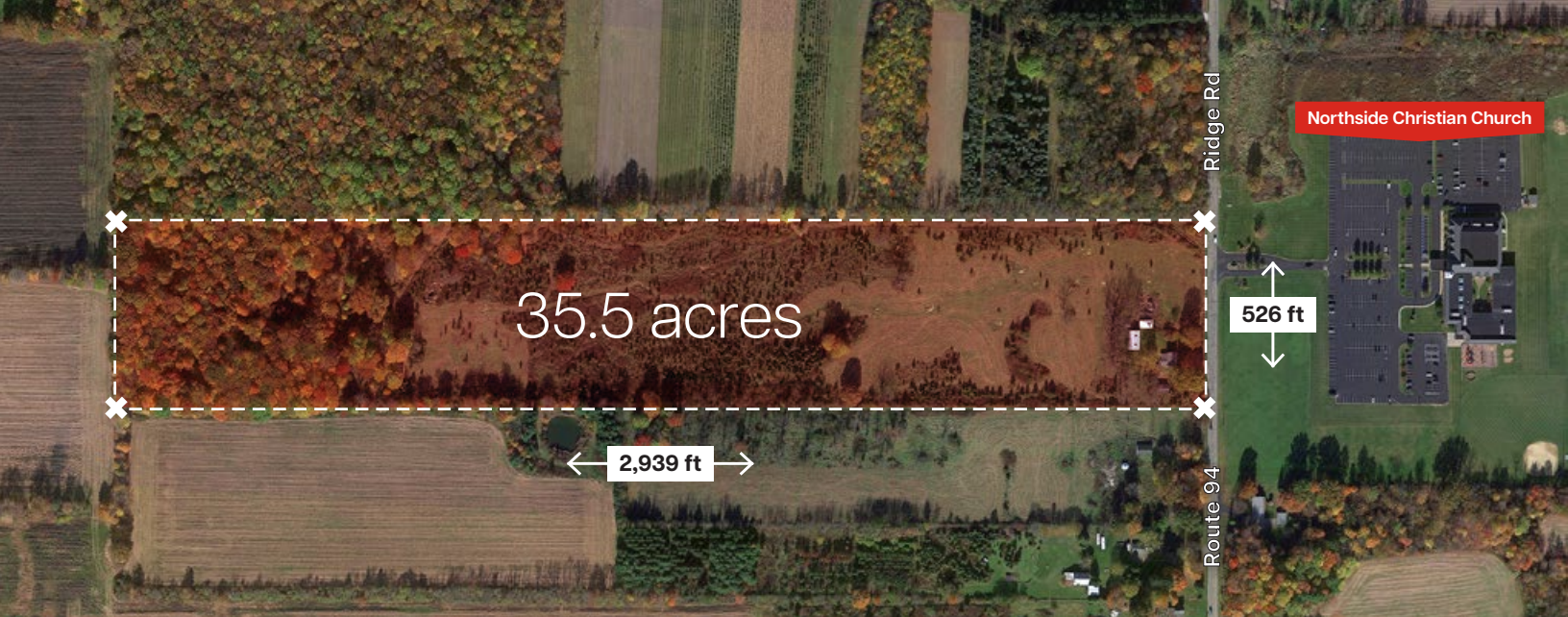
This expansive 35.5-acre parcel is ideally suited for a new residential subdivision or someone looking for land to build a family estate. With zoning approval for 1-acre lots, this property is a developer's dream.

for **Land Development or Family Estate**

Get back to us
before others do

CALL / TEXT
330-338-0348

E-MAIL
kyle@cravenconstruction.com



Lot Details & Key Features

Price

\$ 1,100,000.00

Address [view on Google Maps](#)

7658 Ridge Road, Wadsworth, OH

Size

35.5 acres

APN/Parcel ID

033-12C-35-007

Dimensions

526 x 2,939 feet

Zoning

R-PRD allows for the development of 1-acre lots

Existing Utilities



public water



electric



gas



public sewer

**Get back to us
before others do**

**CALL / TEXT
330-338-0348**

**E-MAIL
kyle@cravenconstruction.com**

Education

Highland School Distric

Public school district offers highly-rated educational services. You can reach **Highland High School** **1** within a 12-minute drive.

Community and Worship

Northside Christian Church **2**

Sharon Center Utd Methodist **3**

Shopping

Wadsworth Crossings

4

Convinient shopping and dining hub that offers a variety of retail stores and restaurants.

Healthcare

Summa Health **5**

University Hospital **6**

Recreation

Golf & Nature

Enjoy your round at **The Sharon Golf Club** **7** and **Ridge Top Golf Course**. **8**

Relax at **Hubbard Valley Park** **9** with a tranquil environment for outdoor activities and exploration or visit **Sharon Nature Preserve**. **10**



.....

This location presents a significant development opportunity and offers future residents a range of facilities that make this property an ideal investment for creating a thriving residential community.

.....

Why invest?

- Strategic Location
- Development Potential
- Education Excellence

Schedule Your Visit Today

CALL / TEXT
330-338-0348

E-MAIL
kyle@cravenconstruction.com