

# GLOBAL BUSINESS CENTER

5770-5826 HOFFNER AVENUE, ORLANDO, FL 32822

OFFICE & FLEX SPACE AVAILABLE

FOUNDRY  
COMMERCIAL



2,665 - 8,622 SF AVAILABLE FOR LEASE



### PROPERTY FEATURES:

- 1.5 Miles from the Orlando International Airport
- 100% Office /Warehouse Spaces
- Grade-level roll up doors
- Close to residential and retail shopping
- Overhead doors 10x10

### AVAILABILITIES

ADDRESS	BUILDING	SUITE	SF
5790 Hoffner Ave	5	507	2,799
5810 Hoffner Ave	8	805	8,622
5826 Hoffner Ave	10	1001	3,172
5826 Hoffner Ave	10	1003	2,665

FOR MORE INFORMATION, PLEASE CONTACT

NICK HEEB | 772.631.1258

[nick.heeb@foundrycommercial.com](mailto:nick.heeb@foundrycommercial.com)

Licensed Real Estate Broker

JOHN PIETKIEWICZ | 407.619.7342

[john.pietkiewicz@foundrycommercial.com](mailto:john.pietkiewicz@foundrycommercial.com)

Licensed Real Estate Broker

**FOUNDRY**  
COMMERCIAL

[WWW.FOUNDRYCOMMERCIAL.COM](http://WWW.FOUNDRYCOMMERCIAL.COM)

## PROPERTY LOCATION



FOR MORE INFORMATION, PLEASE CONTACT

NICK HEEB | 772.631.1258

JOHN PIETKIEWICZ | 407.619.7342

[nick.heeb@foundrycommercial.com](mailto:nick.heeb@foundrycommercial.com)

[john.pietkiewicz@foundrycommercial.com](mailto:john.pietkiewicz@foundrycommercial.com)

Licensed Real Estate Broker

Licensed Real Estate Broker

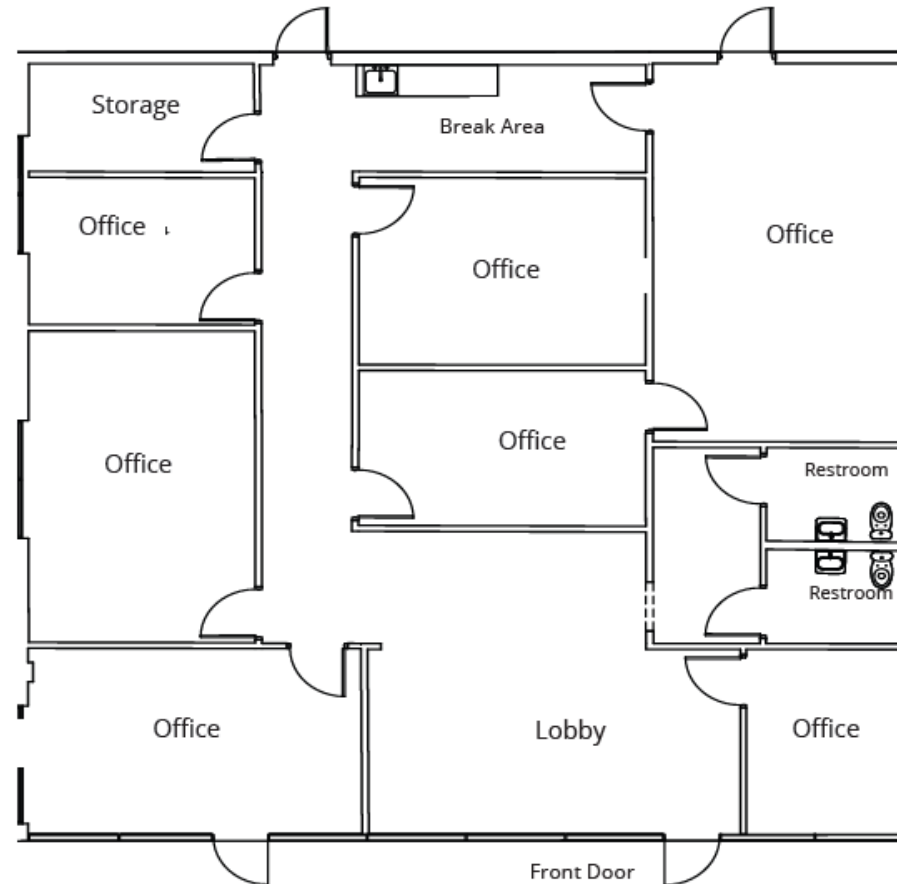
**FOUNDRY**  
COMMERCIAL

[WWW.FOUNDRYCOMMERCIAL.COM](http://WWW.FOUNDRYCOMMERCIAL.COM)

**5790 HOFFNER AVE**

BUILDING 5 | SUITE 507

2,799 SF



**100% OFFICE SPACE**

FOR MORE INFORMATION, PLEASE CONTACT

NICK HEEB | 772.631.1258

[nick.heeb@foundrycommercial.com](mailto:nick.heeb@foundrycommercial.com)

*Licensed Real Estate Broker*

JOHN PIETKIEWICZ | 407.619.7342

[john.pietkiewicz@foundrycommercial.com](mailto:john.pietkiewicz@foundrycommercial.com)

*Licensed Real Estate Broker*

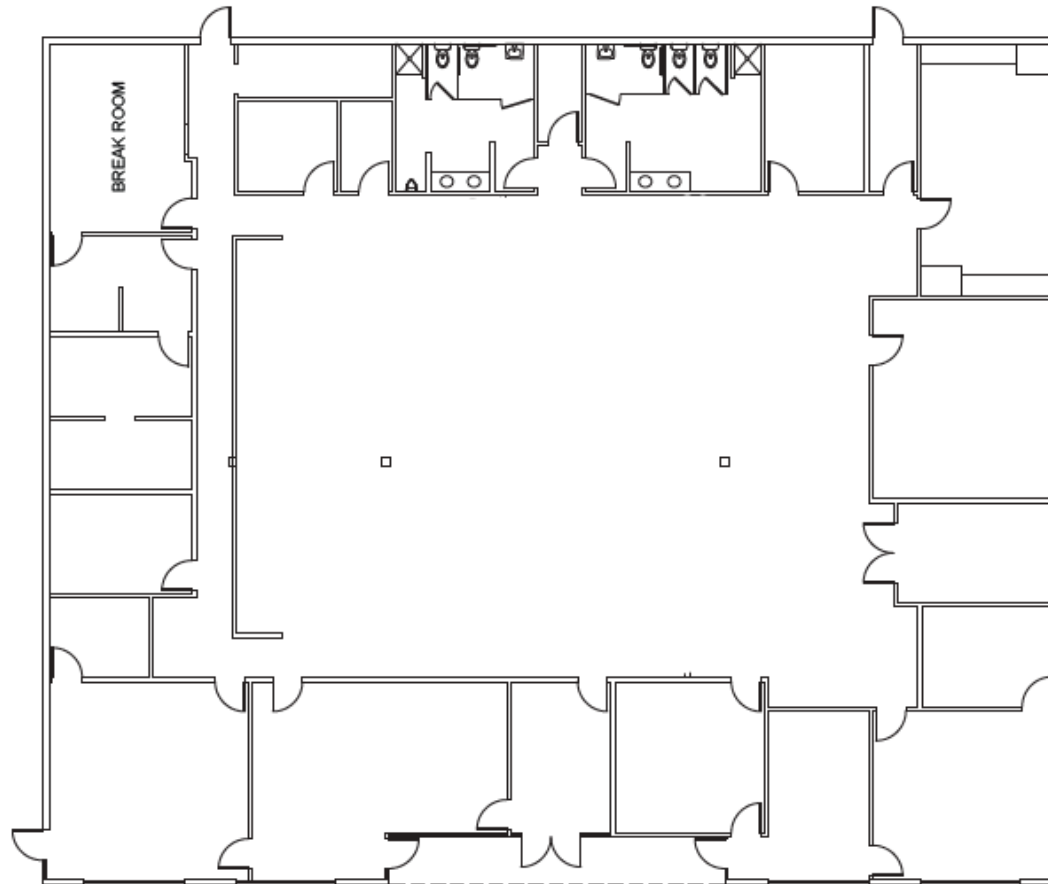
**FOUNDRY**  
COMMERCIAL

[WWW.FOUNDRYCOMMERCIAL.COM](http://WWW.FOUNDRYCOMMERCIAL.COM)

**5810 HOFFNER AVE**

BUILDING 8 | SUITE 805

8,622 SF



**100% OFFICE SPACE**

FOR MORE INFORMATION, PLEASE CONTACT

NICK HEEB | 772.631.1258

[nick.heeb@foundrycommercial.com](mailto:nick.heeb@foundrycommercial.com)

*Licensed Real Estate Broker*

JOHN PIETKIEWICZ | 407.619.7342

[john.pietkiewicz@foundrycommercial.com](mailto:john.pietkiewicz@foundrycommercial.com)

*Licensed Real Estate Broker*

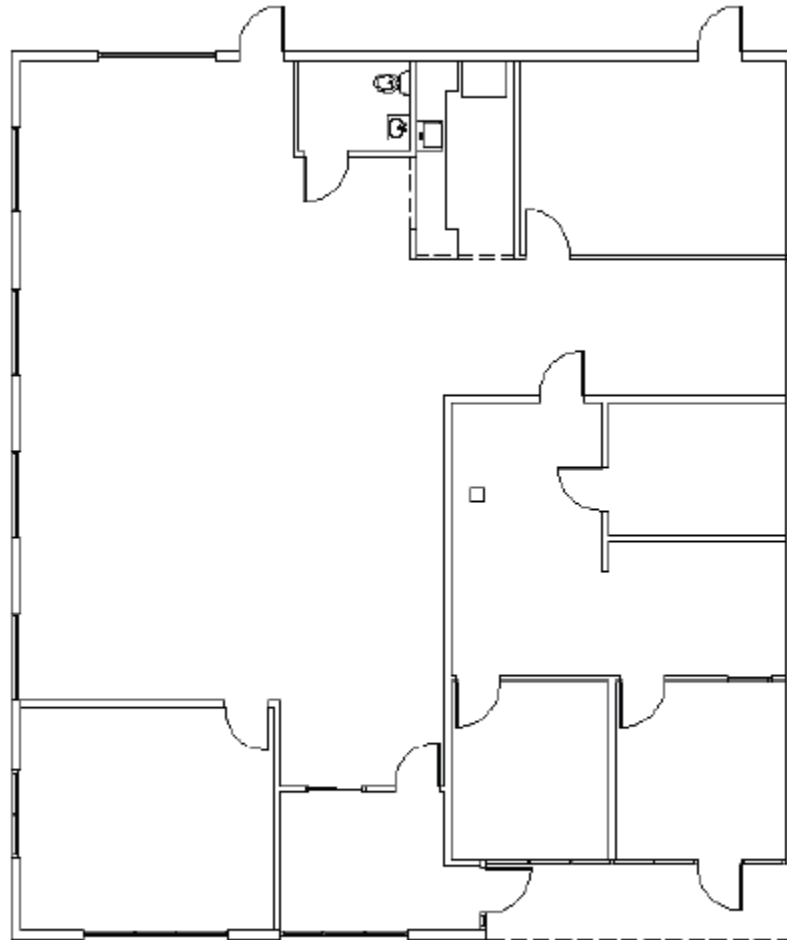
**FOUNDRY**  
COMMERCIAL

[WWW.FOUNDRYCOMMERCIAL.COM](http://WWW.FOUNDRYCOMMERCIAL.COM)

**5826 HOFFNER AVE**

BUILDING 10 | SUITE 1001

3,172 SF



**100% OFFICE SPACE**

FOR MORE INFORMATION, PLEASE CONTACT

NICK HEEB | 772.631.1258

[nick.heeb@foundrycommercial.com](mailto:nick.heeb@foundrycommercial.com)

*Licensed Real Estate Broker*

JOHN PIETKIEWICZ | 407.619.7342

[john.pietkiewicz@foundrycommercial.com](mailto:john.pietkiewicz@foundrycommercial.com)

*Licensed Real Estate Broker*

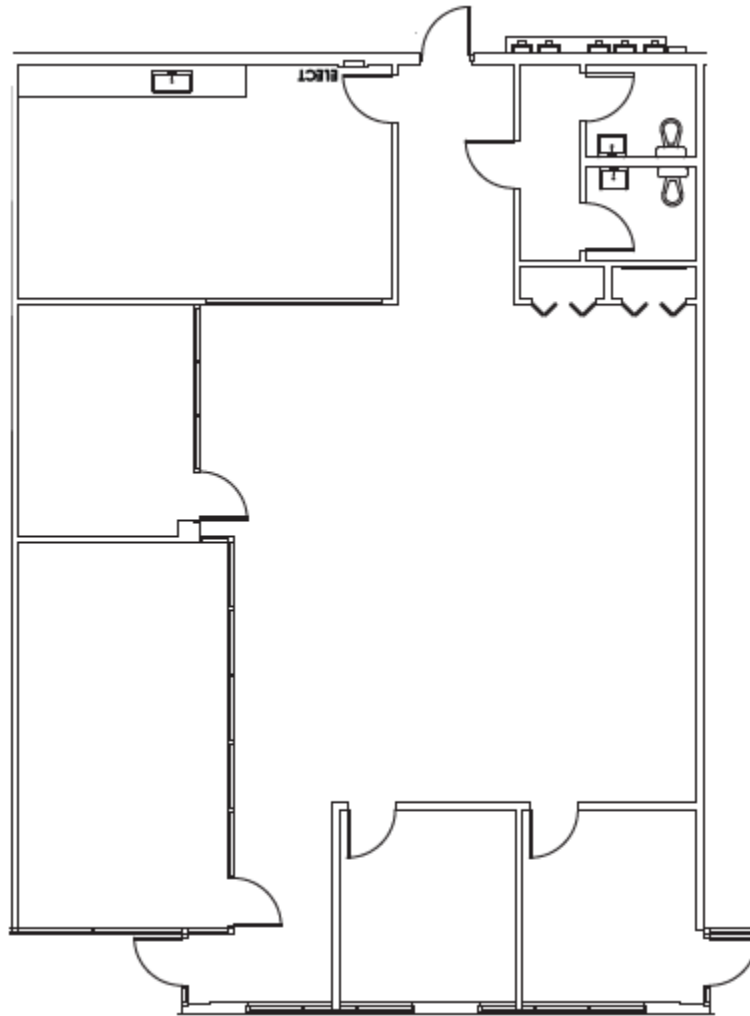
**FOUNDRY**  
COMMERCIAL

[WWW.FOUNDRYCOMMERCIAL.COM](http://WWW.FOUNDRYCOMMERCIAL.COM)

**5826 HOFFNER AVE**

BUILDING 10 | SUITE 1003

2,665 SF



**100% OFFICE SPACE**

FOR MORE INFORMATION, PLEASE CONTACT

NICK HEEB | 772.631.1258

[nick.heeb@foundrycommercial.com](mailto:nick.heeb@foundrycommercial.com)

*Licensed Real Estate Broker*

JOHN PIETKIEWICZ | 407.619.7342

[john.pietkiewicz@foundrycommercial.com](mailto:john.pietkiewicz@foundrycommercial.com)

*Licensed Real Estate Broker*

**FOUNDRY**  
COMMERCIAL

[WWW.FOUNDRYCOMMERCIAL.COM](http://WWW.FOUNDRYCOMMERCIAL.COM)