

501 BROADWAY | SM, CA

DOWNTOWN, ENLIVENED.

501 BROADWAY



TISHMAN SPEYER
Where Matters

CBRE

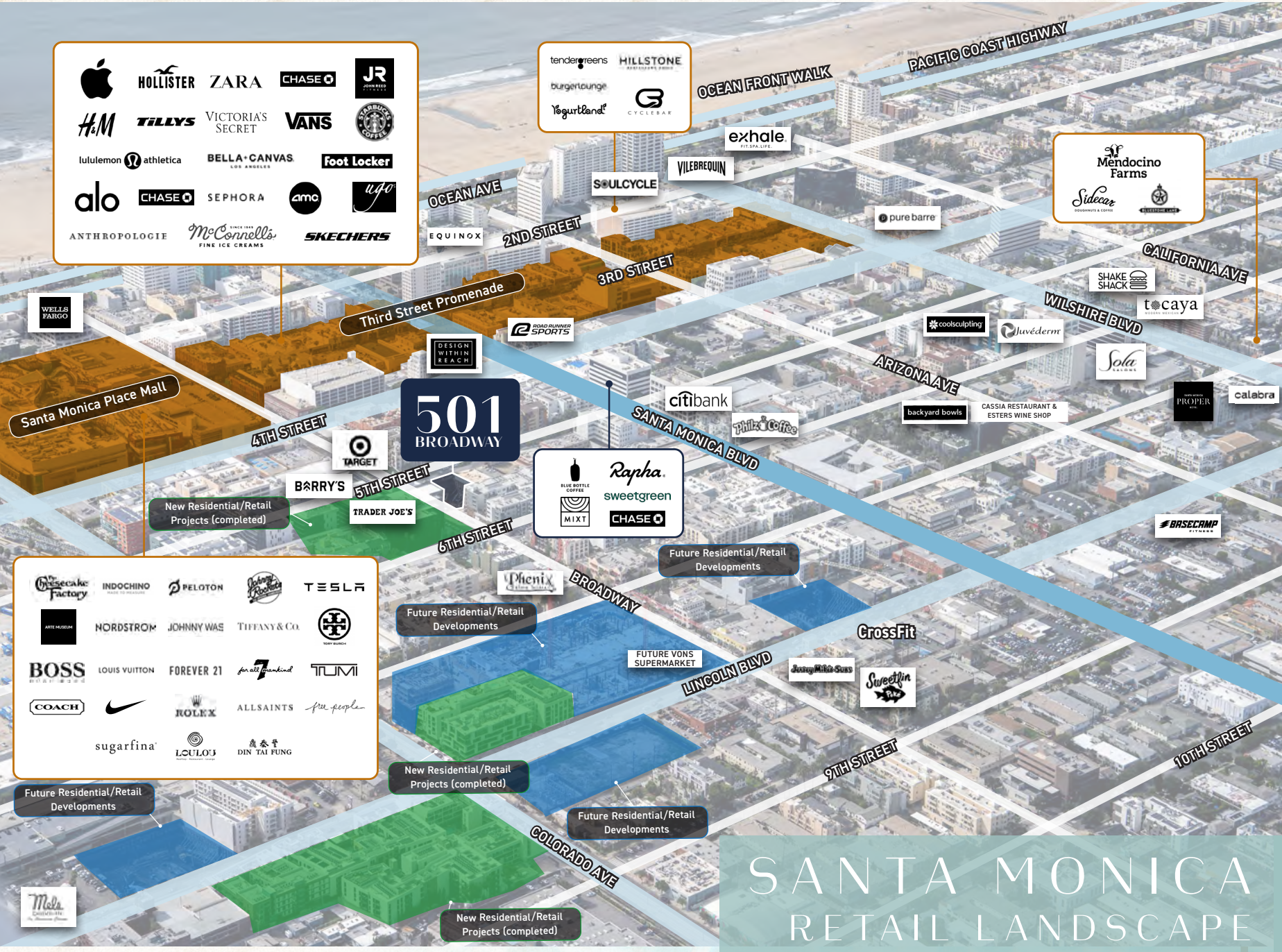
Apple	HOLLISTER	ZARA	CHASE	JR
H&M	TILLYS	VICTORIA'S SECRET	VANS	STARBUCKS
lululemon	athletica	BELLA+CANVAS	Foot Locker	
alo	CHASE	SEPHORA	amc	ugo
ANTHROPOLOGIE	McConnell's FINE ICE CREAMS	SKECHERS		

tendergreens	HILLSTONE
burgerlounge	CYCLEBAR
Yogurtland	

Mendocino Farms
Sidecar
DOUGHNUTS & COFFEE

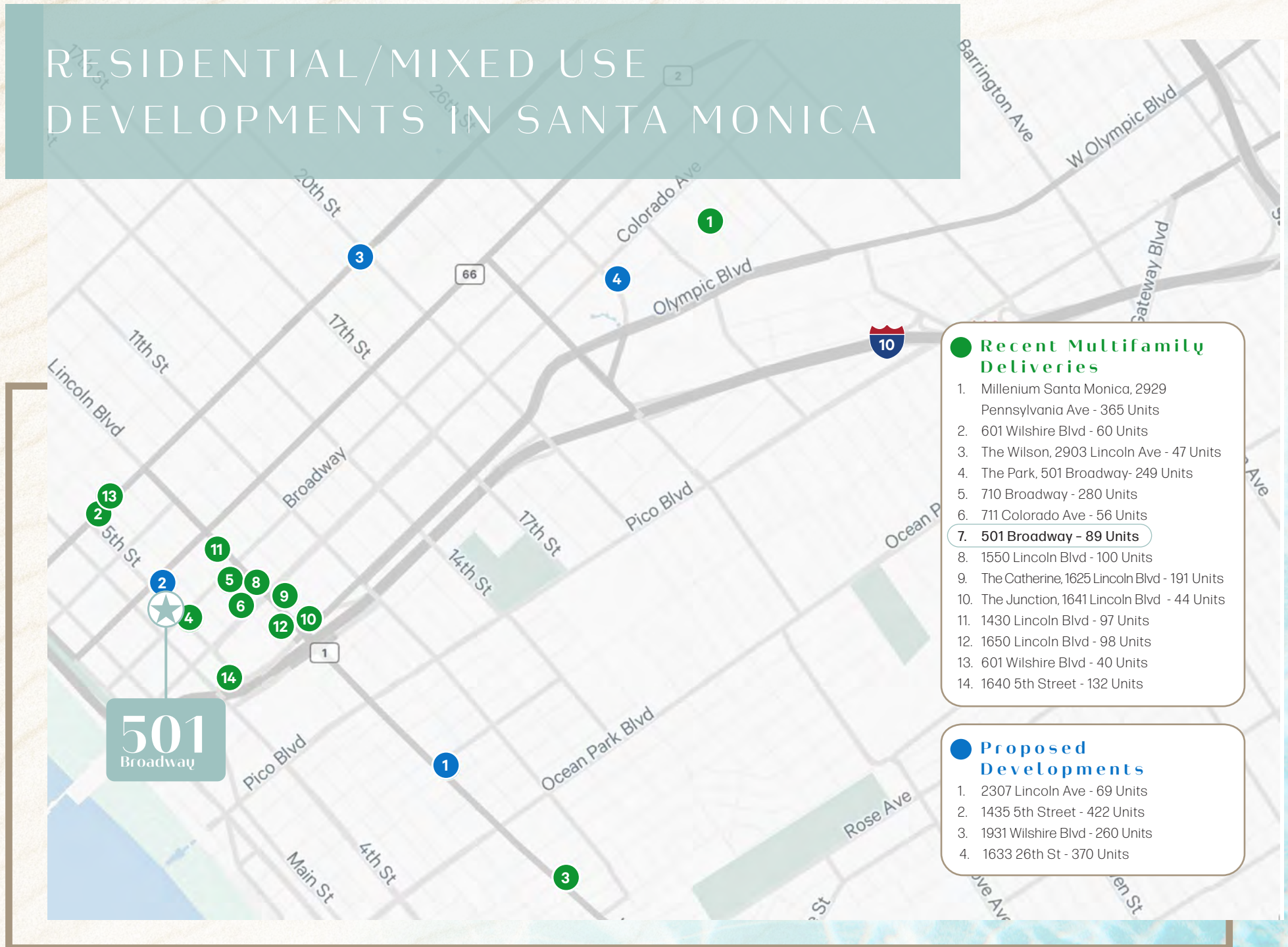
BLUE BOTTLE COFFEE	Rapha
MIXT	sweetgreen
	CHASE

Chocolate Factory	INDOCHINO	PELOTON	Johnny Rockets	TESLA
ARTS MUSEUM	NORDSTROM	JOHNNY WARE	TIFFANY & CO.	TIFFANY & CO.
BOSS	LOUIS VUITTON	FOREVER 21	for all mankind	TUMI
COACH	NIKE	ROLEX	ALLSAINTS	free people
sugarfina	LOULOU	鹿泰堂	DIN TAI FUNG	



SANTA MONICA RETAIL LANDSCAPE

RESIDENTIAL/MIXED USE DEVELOPMENTS IN SANTA MONICA



THE PROJECT



501 Broadway is located in the heart of Santa Monica at the intersection of 5th and **Broadway** and within walking distance of the Third Street Promenade. Construction is underway for this **89-unit** state of the art mixed use residential building with retail on the ground floor.

THE SPACE



Delivery Date:
February 2026



Patio:
700 SF



Size:
2,950 SF



Frontage:
44' on 5th St. &
51' on Broadway



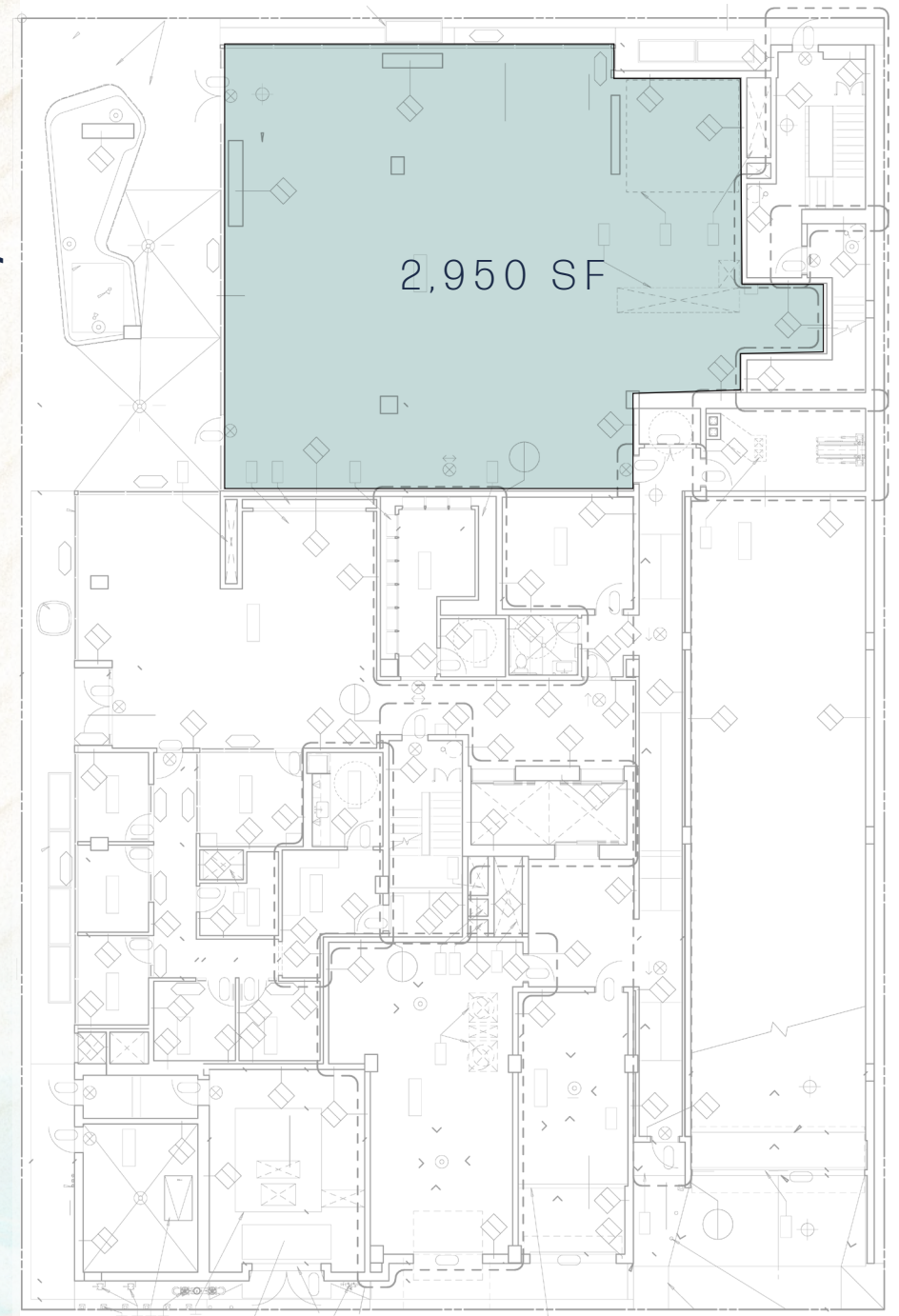
Venting/Grease: Shaft In Place for Venting. Grease Line In Place.

Centrally located with immediate access to 10 Freeway and PCH and dozens of dining, entertainment and retail options.

Strong neighboring brands including Target, CVS, WeWork, Benihana, Trader Joes and more!

Broadway

5th Street



THE NEIGHBORHOOD



COMMUNITY DEMOGRAPHICS



**EXCELLENT
TRANSIT**

(77)



**WALKER'S
PARADISE**

(94)



**VERY
BIKEABLE**



\$164,403

Average HH Income
within 1 mile



RESIDENTIAL

1,062

units under construction
within 1 mile



OFFICE

42,000

square feet of office/medical
space within 1 mile



67,221

daytime workers
within 1 mile

501 BROADWAY

SANTA MONICA, CA

FOR LEASING INQUIRIES:

Ryan Gurman

SENIOR VICE PRESIDENT

Lic. 01972081

+1 310 228 2127

ryan.gurman@cbre.com

Bronson Morgan

SENIOR ASSOCIATE

Lic. 02194401

+1 415 446 8796

bronson.morgan@cbre.com

Alex Sagues

SENIOR VICE PRESIDENT

Lic. 02055525

+1 415 772 0306

alex.sagues@cbre.com



TISHMAN SPEYER
Where Matters

CBRE



© 2025 CBRE, Inc. All rights reserved. This information has been obtained from sources believed reliable, but has not been verified for accuracy or completeness. You should conduct a careful, independent investigation of the property and verify all information. Any reliance on this information is solely at your own risk. CBRE and the CBRE logo are service marks of CBRE, Inc. All other marks displayed on this document are the property of their respective owners, and the use of such logos does not imply any affiliation with or endorsement of CBRE. Photos herein are the property of their respective owners. Use of these images without the express written consent of the owner is prohibited.