

FOR LEASE

2100 WESTOWN PARKWAY

2100 WESTOWN PARKWAY WEST DES MOINES, IA 50265



PROPERTY DESCRIPTION

Office space for lease on the first and second floor of 2100 Westown Pkwy. 6,778 square feet available on the first floor. 1,085 and 2,171 square feet available on the second floor.

PROPERTY HIGHLIGHTS

- Common area bathrooms
- Elevator
- Ample Parking

OFFERING SUMMARY

Lease Rate:	\$9.50 SF/yr (NNN)
Available SF:	1,085 - 6,778 SF
Building Size:	14,292 SF

DEMOGRAPHICS	0.25 MILES	0.5 MILES	1 MILE
Total Households	148	676	4,182
Total Population	302	1,396	8,322
Average HH Income	\$79,065	\$88,748	\$76,548



MICHAEL SHINDLER

515.720.3492

michael@fergusoncres.com

NATHAN PETSCHÉ

515.867.4964

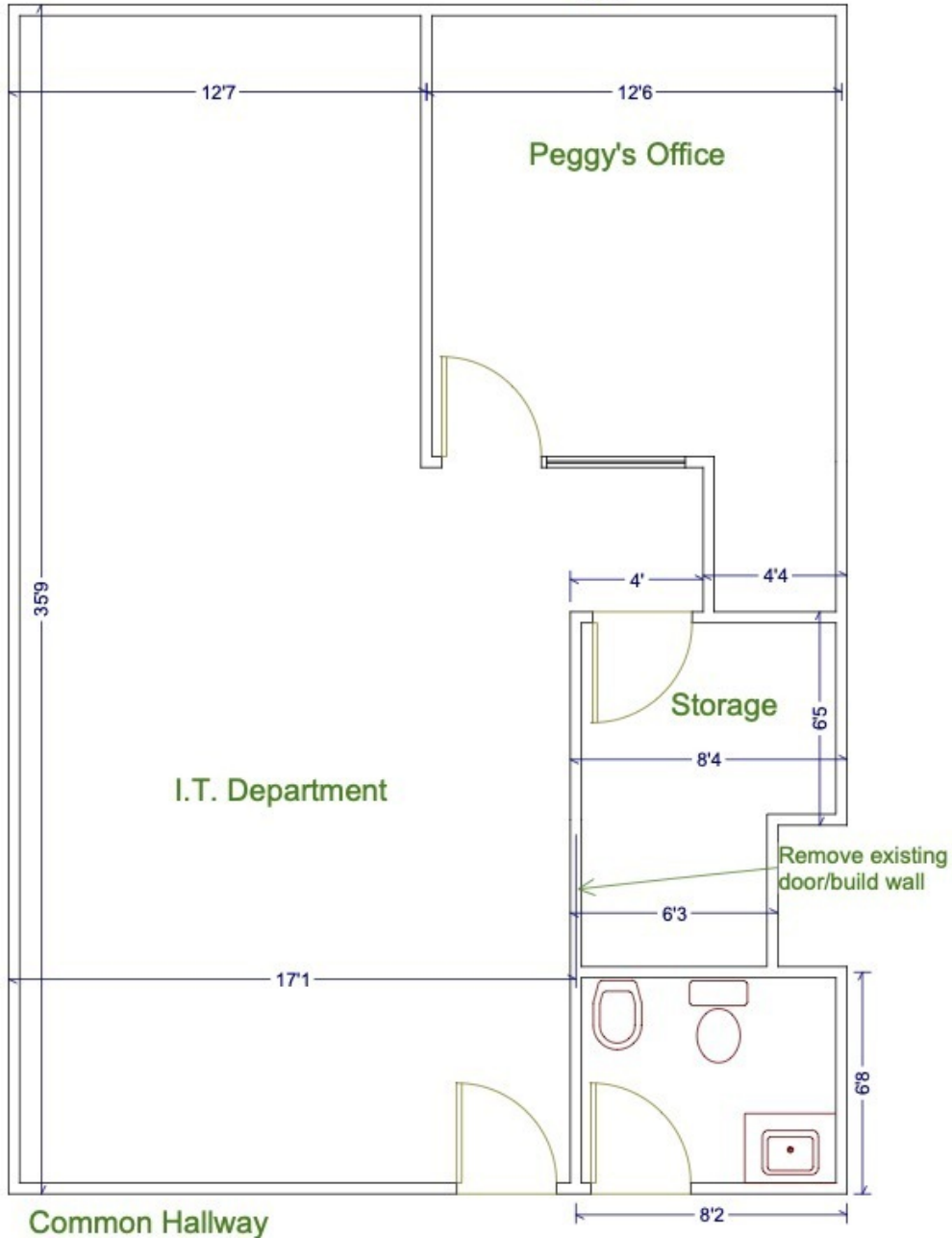
nathan@fergusoncres.com

FOR LEASE

2100 WESTOWN PARKWAY SUITE 230

2100 WESTOWN PARKWAY WEST DES MOINES, IA 50265

2100 Westown Parkway, Suite 230



MICHAEL SHINDLER

515.720.3492

michael@fergusoncre.com

NATHAN PETSCH

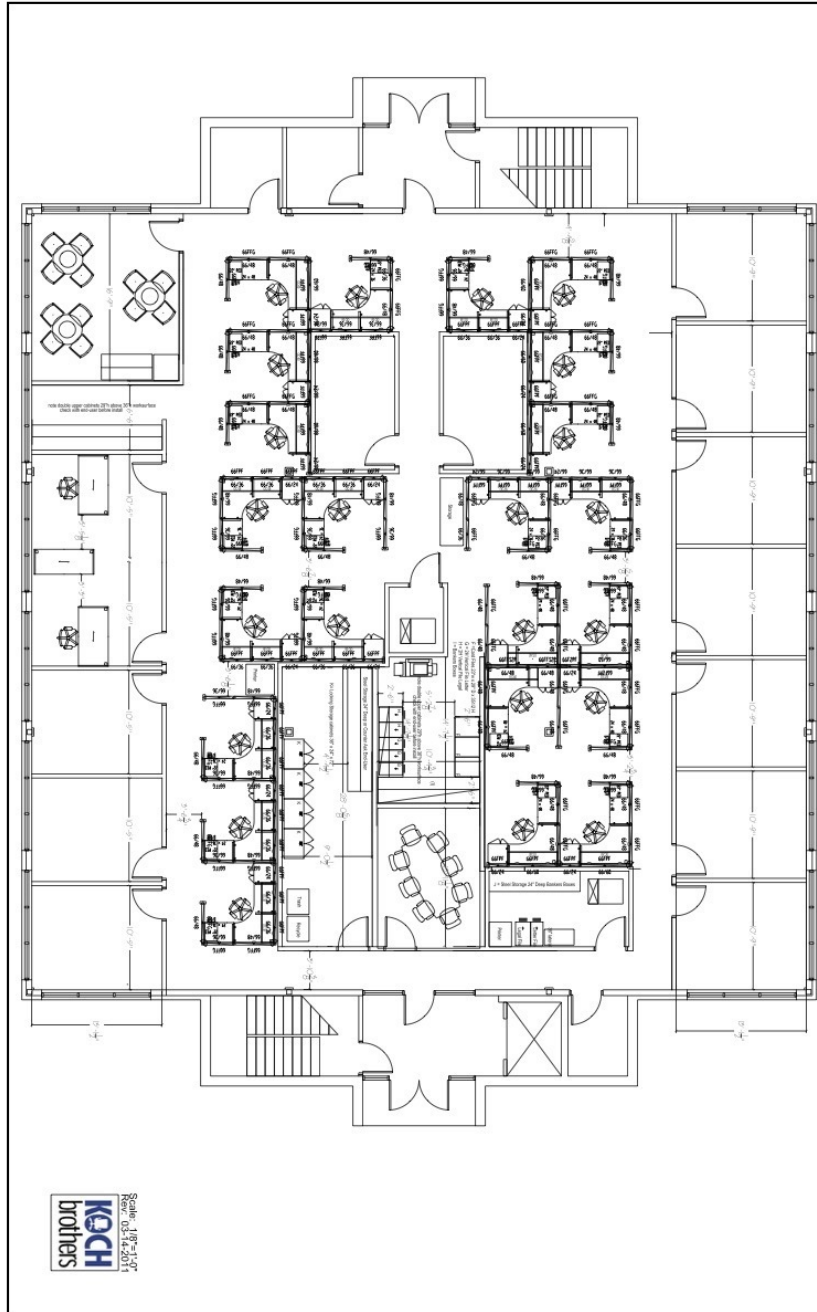
515.867.4964

nathan@fergusoncre.com

FOR LEASE

2100 WESTOWN PARKWAY SUITE 100

2100 WESTOWN PARKWAY WEST DES MOINES, IA 50265



fergusoncres.com

MICHAEL SHINDLER

515.720.3492

michael@fergusoncres.com

NATHAN PETSCHÉ

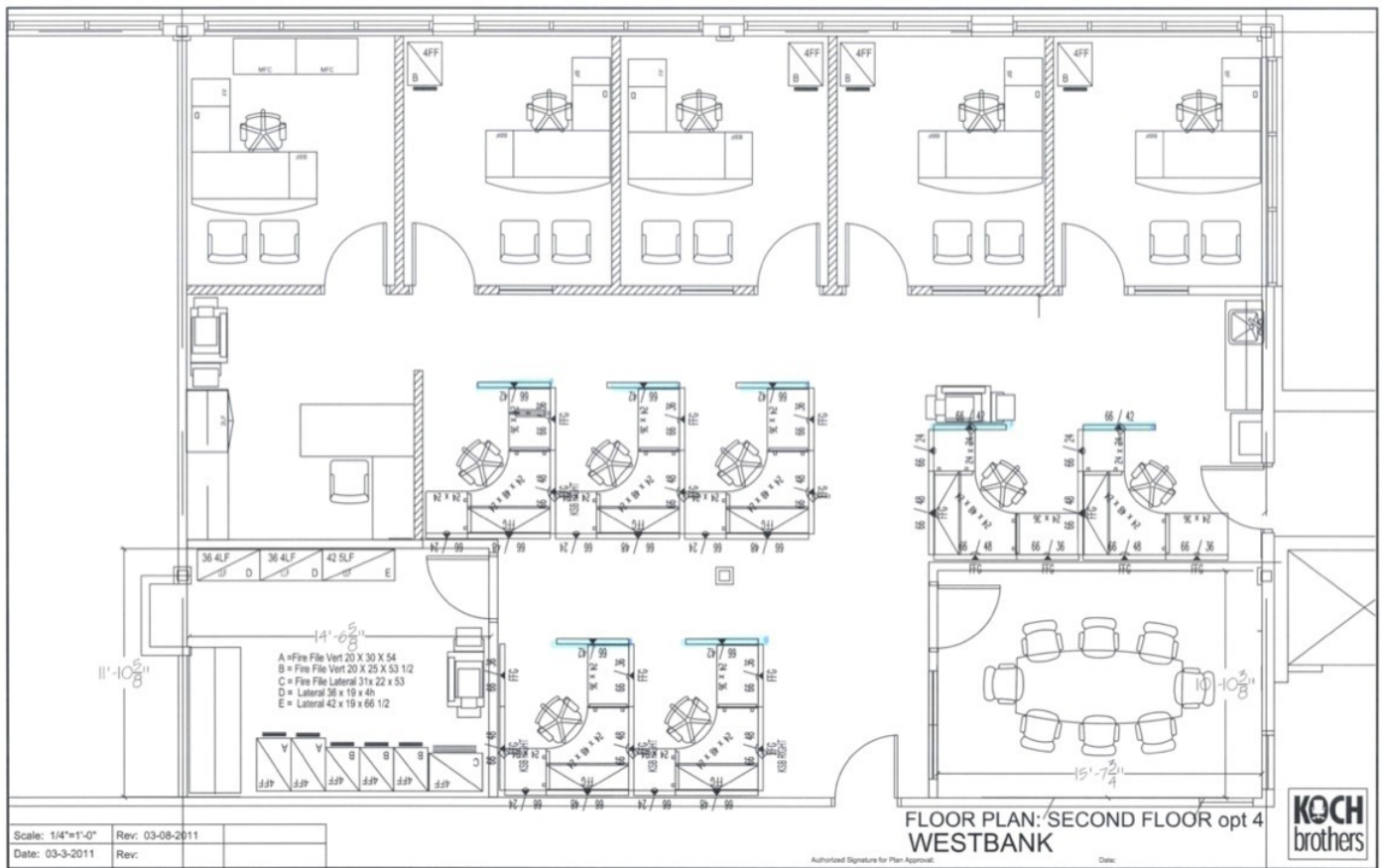
515.867.4964

nathan@fergusoncres.com

FOR LEASE

2100 WESTOWN PARKWAY SUITE 200

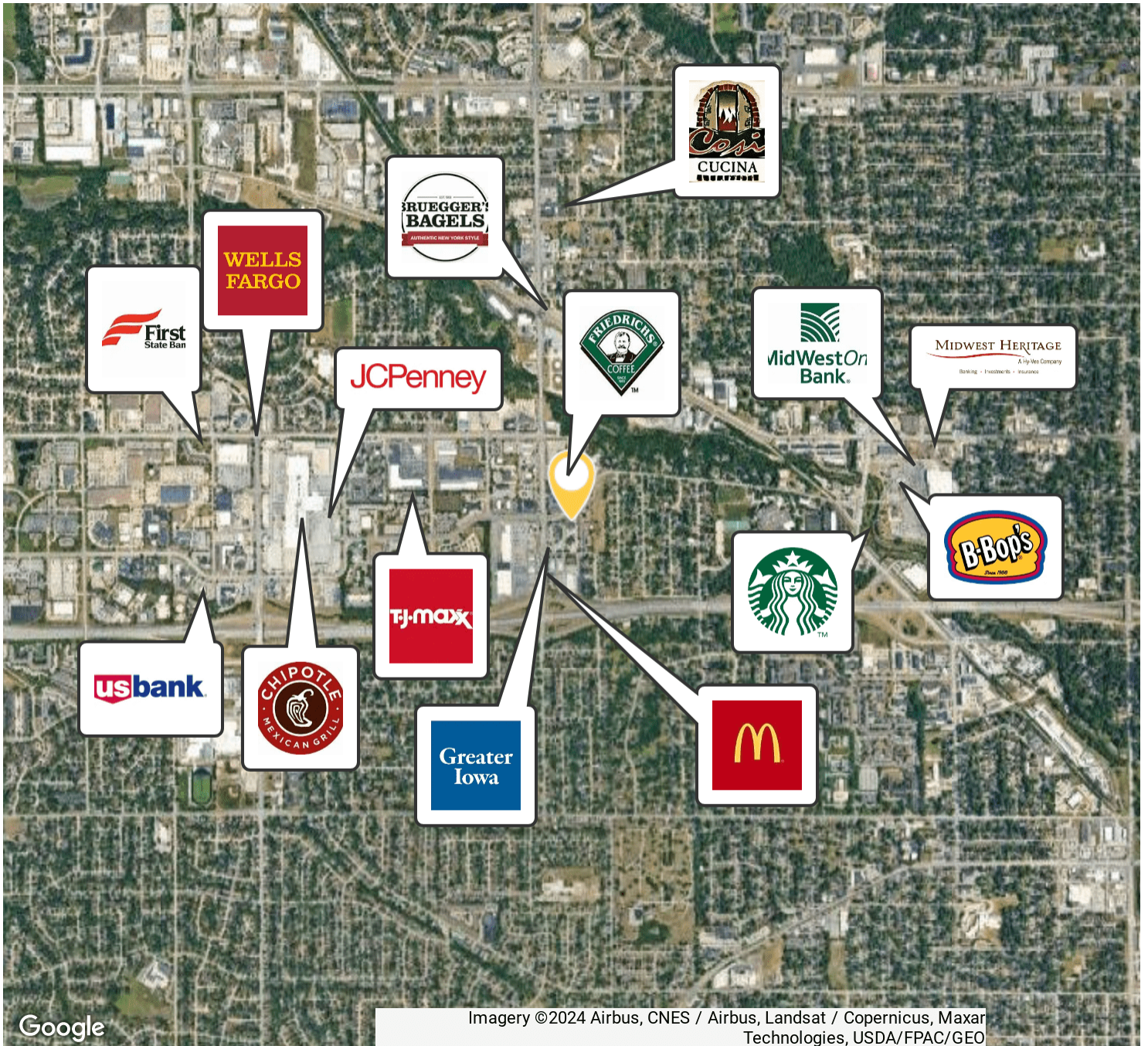
2100 WESTOWN PARKWAY WEST DES MOINES, IA 50265



FOR LEASE

2100 WESTOWN PARKWAY

2100 WESTOWN PARKWAY WEST DES MOINES, IA 50265



MICHAEL SHINDLER

515.720.3492

michael@fergusoncre.com

NATHAN PETSCH

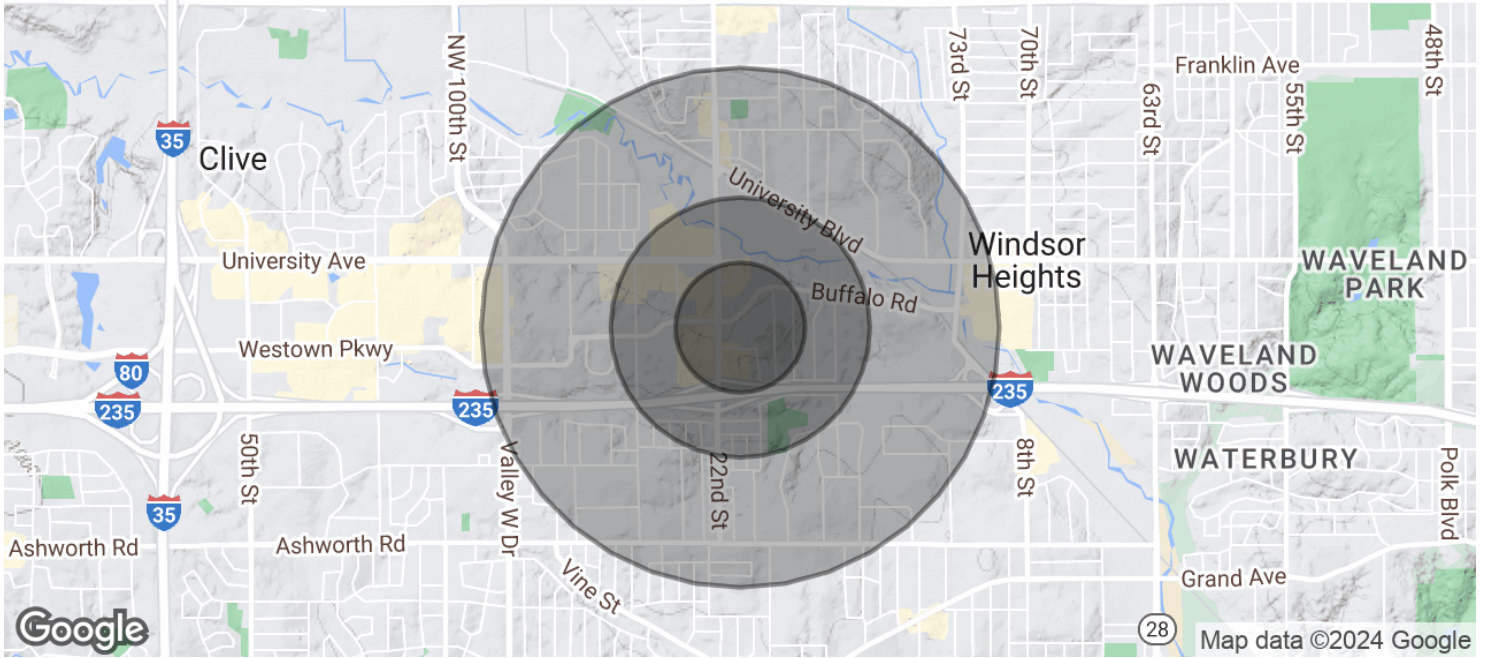
515.867.4964

nathan@fergusoncre.com

FOR LEASE

2100 WESTOWN PARKWAY

2100 WESTOWN PARKWAY WEST DES MOINES, IA 50265



POPULATION	0.25 MILES	0.5 MILES	1 MILE
Total Population	302	1,396	8,322
Average Age	35.9	37.9	37.8
Average Age (Male)	36.0	38.6	36.3
Average Age (Female)	31.1	35.9	38.8

HOUSEHOLDS & INCOME	0.25 MILES	0.5 MILES	1 MILE
Total Households	148	676	4,182
# of Persons per HH	2.0	2.1	2.0
Average HH Income	\$79,065	\$88,748	\$76,548



MICHAEL SHINDLER

515.720.3492

michael@fergusoncre.com

NATHAN PETSCH

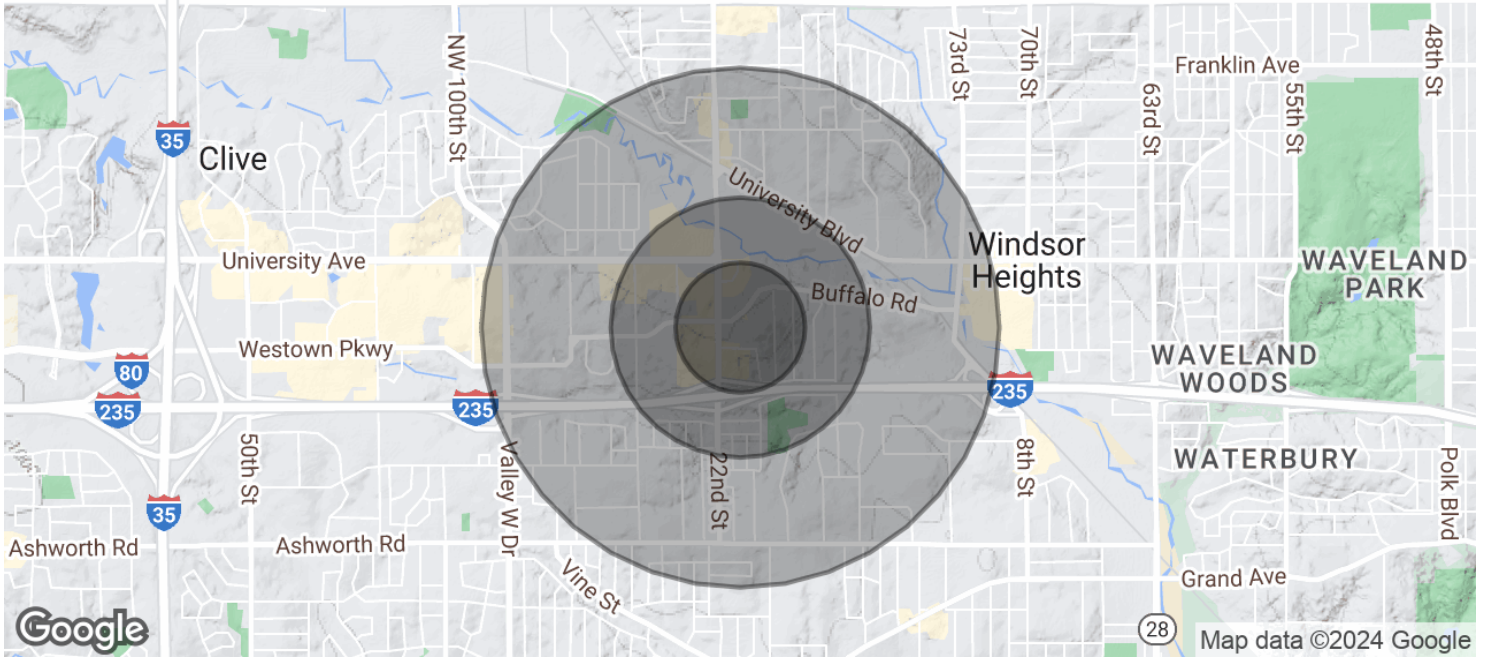
515.867.4964

nathan@fergusoncre.com

FOR LEASE

2100 WESTOWN PARKWAY

2100 WESTOWN PARKWAY WEST DES MOINES, IA 50265



Average House Value

\$150,499

\$174,887

\$196,844

2020 American Community Survey (ACS)



MICHAEL SHINDLER

515.720.3492

michael@fergusoncre.com

NATHAN PETSCH

515.867.4964

nathan@fergusoncre.com