

Samaritan Way/103rd St

Jacksonville, FL 32210

2.08 Total Acres



23

23

CIRCLE K

CENTURY COMMUNITIES
THE VILLAS AT BISHOP OAKS
TOWNHOMES

Bishop John L. Snyder
High School

SITE
2.08 Acres

ALSO AVAILABLE
TOTALING 6.52 ACRES
(WILLING TO SUBDIVIDE)

103rd St

134

2077 to 540' of Frontage

13,900 VPD

MACRO AERIAL & PROPERTY DETAILS



SITE

Coming Soon
Publix
 New Publix at
 Chaffee & Normandy
 Multifamily
 18AC

Novo Westlake
 Apartments

Bishop John Snyder
 High School

FAMILY DOLLAR

Coming Soon
 Multifamily &
 Townhomes

Coming Soon
 Retail Center
 16AC

Bent Creek
 Golf Course

BOEING
NEW FACILITY
 The 370,000-square-foot complex
 will be the first "digitally enabled"
 maintenance, repair and overhaul
 facility in the aviation industry.

CECIL AIRPORT
 Tied into an expansive interstate
 highway system accessible to 33
 million Americans within an 8-hour
 radius. It's close to three major rail
 lines, a thriving deep-water port, and
 Jacksonville International Airport with
 200+ daily flights.

Coming Soon
 Cecil Field Commerce Center
 A master plan for 6,000 acres.

New World
 Sports Complex

Jacksonville
 Equestrian Center

Jacksonville Fair Relocation
 Target Date: 2025

FSCJ Cecil
 College

Baker Hughes
 Industria Equipment Supplier

wayfair

amazon

BRIDGESTONE

Property Details

- » 2.08 Total Acres
- » Traffic Light Corner
- » 1.5 Miles from New Publix at Chaffee & Normandy (Just north of the site)

Listing Price: \$2,050,000

Oakleaf Town Center Shopping Mall



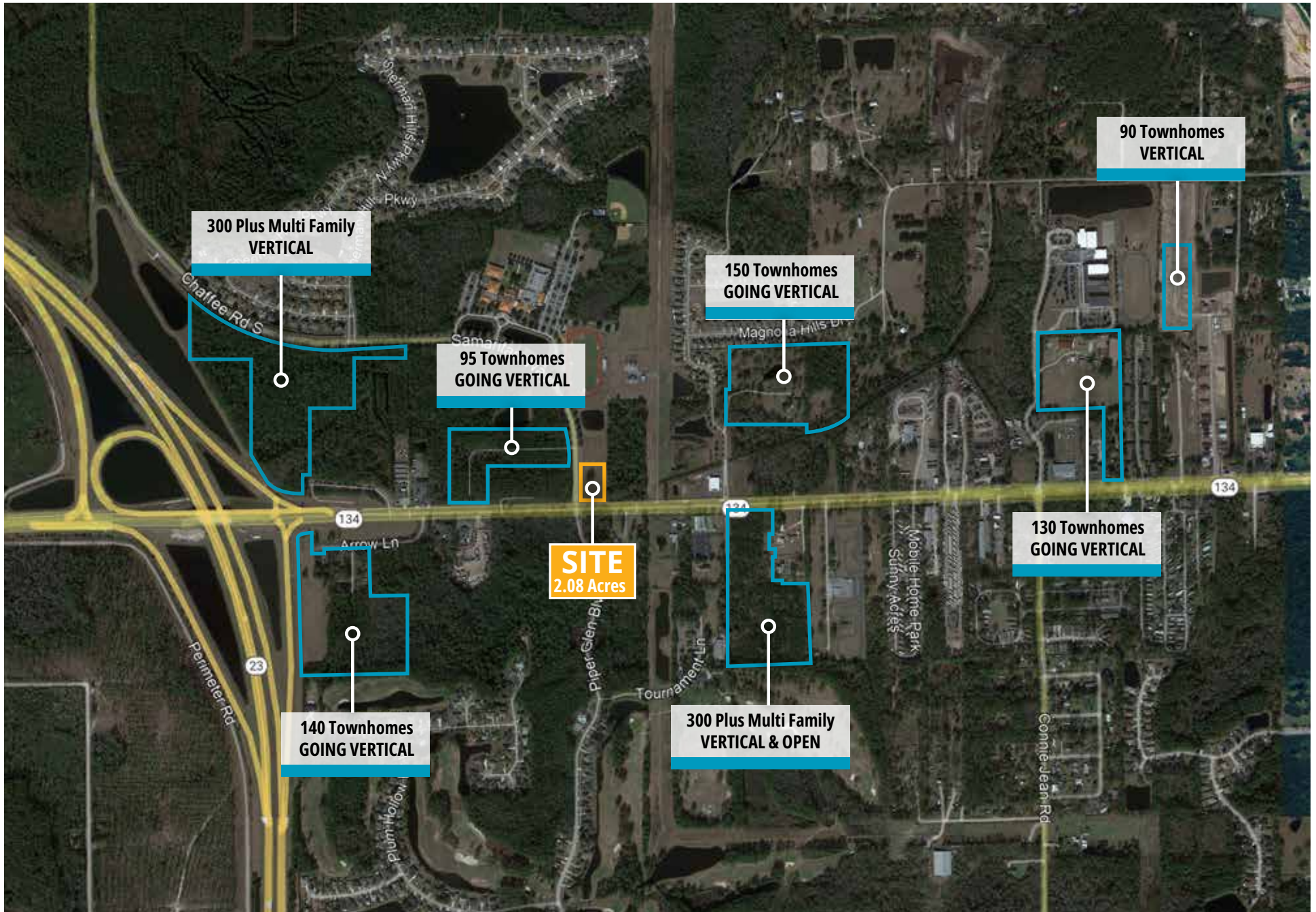




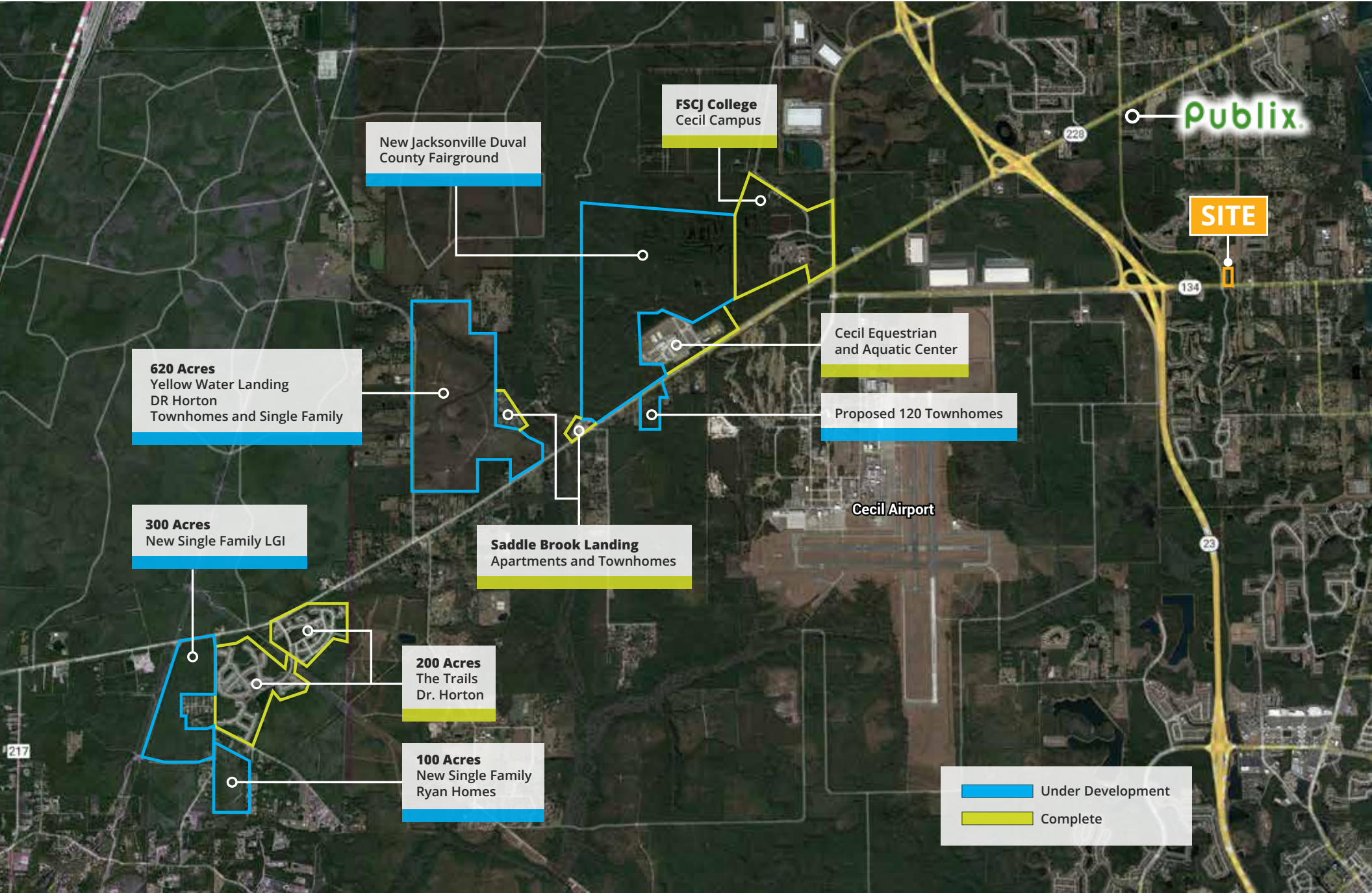

PROPERTY PHOTO



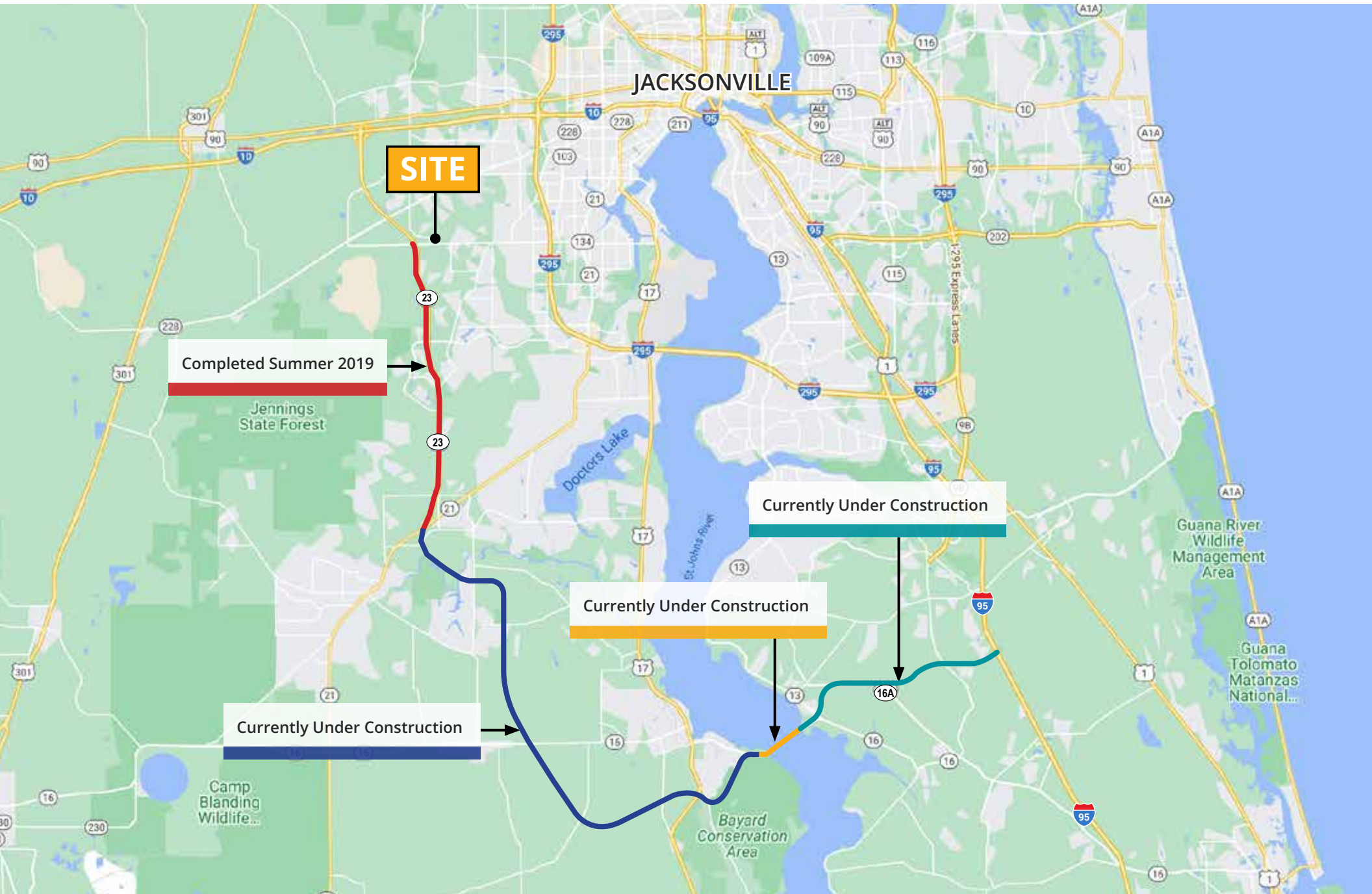
RESIDENTIAL DEVELOPMENT



ADDITIONAL RESIDENTIAL DEVELOPMENTS (TO THE WEST)



FIRST COAST EXPRESSWAY



INDUSTRIAL DEVELOPMENTS

Cedar Rapids City Council Approves Financial Incentives For FedEx Warehouse

A new FedEx warehouse proposed to be built in Cedar Rapids has taken a huge step forward after the Cedar Rapids City Council approved tax incentives for the project.



The new facility would operate 24 hours a day, with an estimated \$20 million payroll to its approximate 434 jobs, most of them part-time.

Saft America, Inc.



JinkoSolar plant build-out at Cecil Commerce Center approved by city

A permit has been issued for a 13.85 million project for interior construction and plant renovation.



JinkoSolar (U.S.) Industries won city approval to build-out the solar panel plant it is setting up in AllianceFlorida at Cecil Commerce Center.



Hillwood Proposed 450K SF Warehouse



SITE

NEW DEVELOPMENTS



PLANNING: CECIL FIELD COMMERCE CENTER

- The new Cecil Commerce Center will total 8,263 acres
- Located at the existing Cecil Field Airport in Jacksonville, Florida
- New development will create a world-class campus style Multimodal Logistics Hub and Industrial Distribution Business Center
- Will allow to effectively facilitate local, regional, national, and international commerce
- The industrial buildings are a mixture of large cross-dock distribution and rear load warehouse buildings



CECIL AIRPORT BOEING EXPANSION

- Boeing is investing over 100 million dollars into a new hangar at the Jacksonville Cecil Airport
- The hangar will be 365,623-square feet
- This will create over 400 new jobs for Cecil Airport
- The average wage of new jobs created will be +\$65,000 including benefits
- Boeing opens \$245.8 million maintenance and repair facility at Cecil Airport
- 4.6 miles from subject property



3-MILE RAILWAY AT CECIL COMMERCE CENTER

- The money from the Florida Job Growth Grant Fund will go toward the construction of a three-mile rail line that will connect businesses at the 600-acre Cecil Commerce Center.
- Expected to bring 500 new jobs through the expansion of existing businesses and new businesses and an economic impact of \$14 million

Samaritan Way/103rd St

Jacksonville, FL 32210

2.8 Total Acres



DREAM FINDERS HOMES

**140 TOWNHOMES
COMING SOON**

SHAUN MAYBERRY (LEAD)
Senior Director
904.219.9035
shaun.mayberry@franklinst.com

GIOVANNY CASTANO
Associate
904.364.2091
giovanny.castano@franklinst.com

KEITH WOOD
Senior Associate
904.364.0952
keith.wood@franklinst.com

**SITE
2.08 Acres**

**ALSO AVAILABLE
TOTALING 6.52 ACRES
(WILLING TO SUBDIVIDE)**