

New Flex Buildings - 2025

1,946, 2,100, 4,046 & 5,046 SF

Speedway Blvd close to Exit 5 and I-95



We obtained the information above from sources we believe to be reliable. However, we have not verified its accuracy and make no guarantee, warranty or representation about it. It is submitted subject to the possibility of errors, omissions, change of price, rental or other conditions, prior sale, lease or financing, or withdrawal without notice. We include projections, opinions, assumptions or estimates for example only, and they may not represent current or future performance of the property. You and your tax and legal advisors should conduct your own investigation of the property and transaction.

1227 May River Road, Suite 100, Suite 100
Bluffton, SC 29910
843 837 4460 tel
naicarolinacharter.com



Stand-Alone Office / Warehouse Buildings For Lease

12362 Speedway Boulevard
Hardeeville, South Carolina 29927

Property Highlights

- Excellent location to serve all of Jasper County, Savannah, Bluffton and Hilton Head Island and the surrounding area,
- The property is less than 1 mile to I-95 at Exit 5 and fronts on Highway 17 (Speedway Blvd) with great access from two roads.
- There is a total of 11 stand-alone flex buildings.
- The developer will provide finished office space consisting of two offices, small open area with a kitchenette and finished restroom. See the floor plans on pages 10 & 11.
- The entire business park is fenced-in.

Offering Summary

Building Square Footage:	1,946, 2,100, 4,046 and 5,046 SF
Available:	Ready for Occupancy
Base Rent:	\$18 - \$20 PSF, see page 2
2025 Estimated NNN:	\$3.60 PSF
Office Area:	2 Offices, Restroom and Kitchenette, see floor plan
Warehouse Ceiling Height:	+/- 13'-15'
Warehouse Lighting:	LED High Bay
Electrical-Amp/Panel:	200A & 208/120V
Spray Foam Insulation:	Walls & Ceiling
12x14 Roll-up Doors (drive-in)	2 Per Building

For More Information

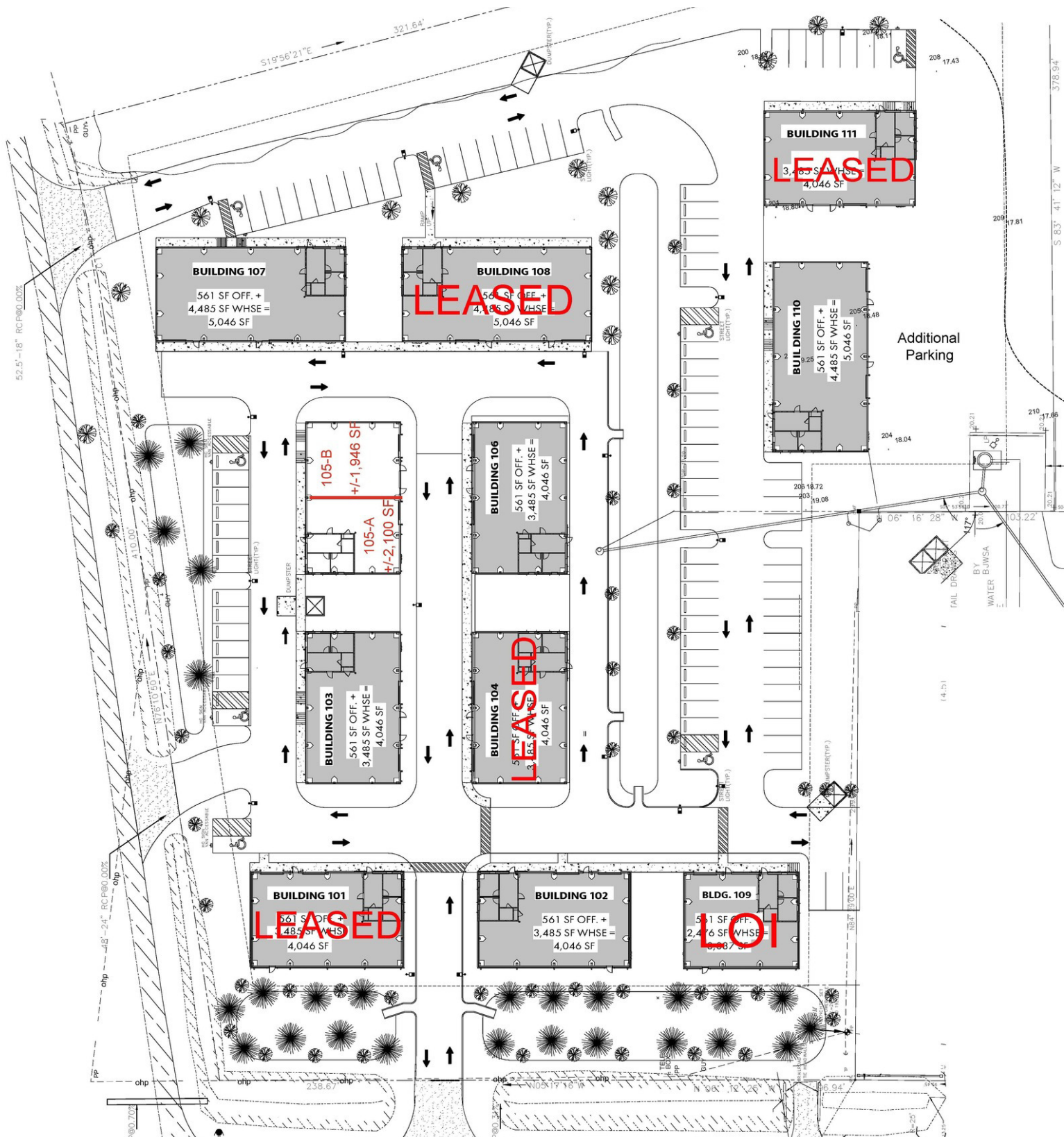
Baker Wilkins

O: 843 837 4460 x2

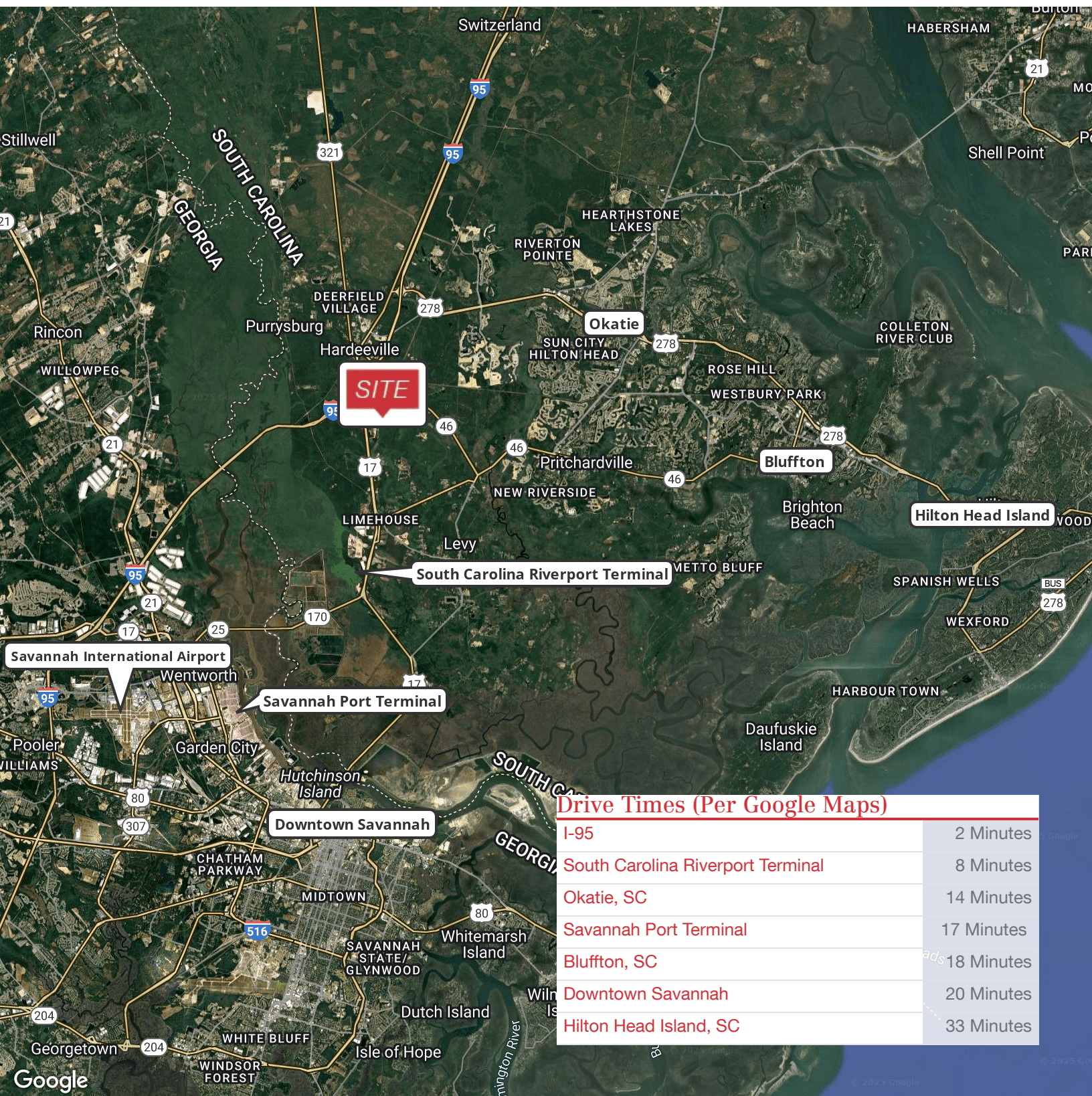
baker@naicarolinacharter.com



Building	SF	NNN	Base Rent	Delivery
Building 107	5,046 SF	\$3.60 PSF	\$18.00 SF/yr	Ready for Occupancy
Building 108	5,046 SF	NNN	LEASED	-
Building 103	4,046 SF	\$3.60 PSF	\$18.00 SF/yr	Ready for Occupancy
Building 105-A	2,100 SF	\$3.60 PSF	\$19.00 SF/yr	Ready for Occupancy
Building 105-B	1,946 SF	\$3.60 PSF	\$18.00 SF/yr	Ready for Occupancy
Building 106	4,046 SF	\$3.60 PSF	\$18.00 SF/yr	Ready for Occupancy
Building 104	4,046 SF	NNN	LEASED	-
Building 101	4,046 SF	NNN	LEASED	-
Building 102	4,046 SF	\$3.60 PSF	\$20.00 SF/yr	Ready for Occupancy
Building 109	3,037 SF	NNN	LOI	-
Building 110	5,046 SF	\$3.60 PSF	\$18.00 SF/yr	Ready for Occupancy
Building 111	4,046 SF	NNN	LEASED	-

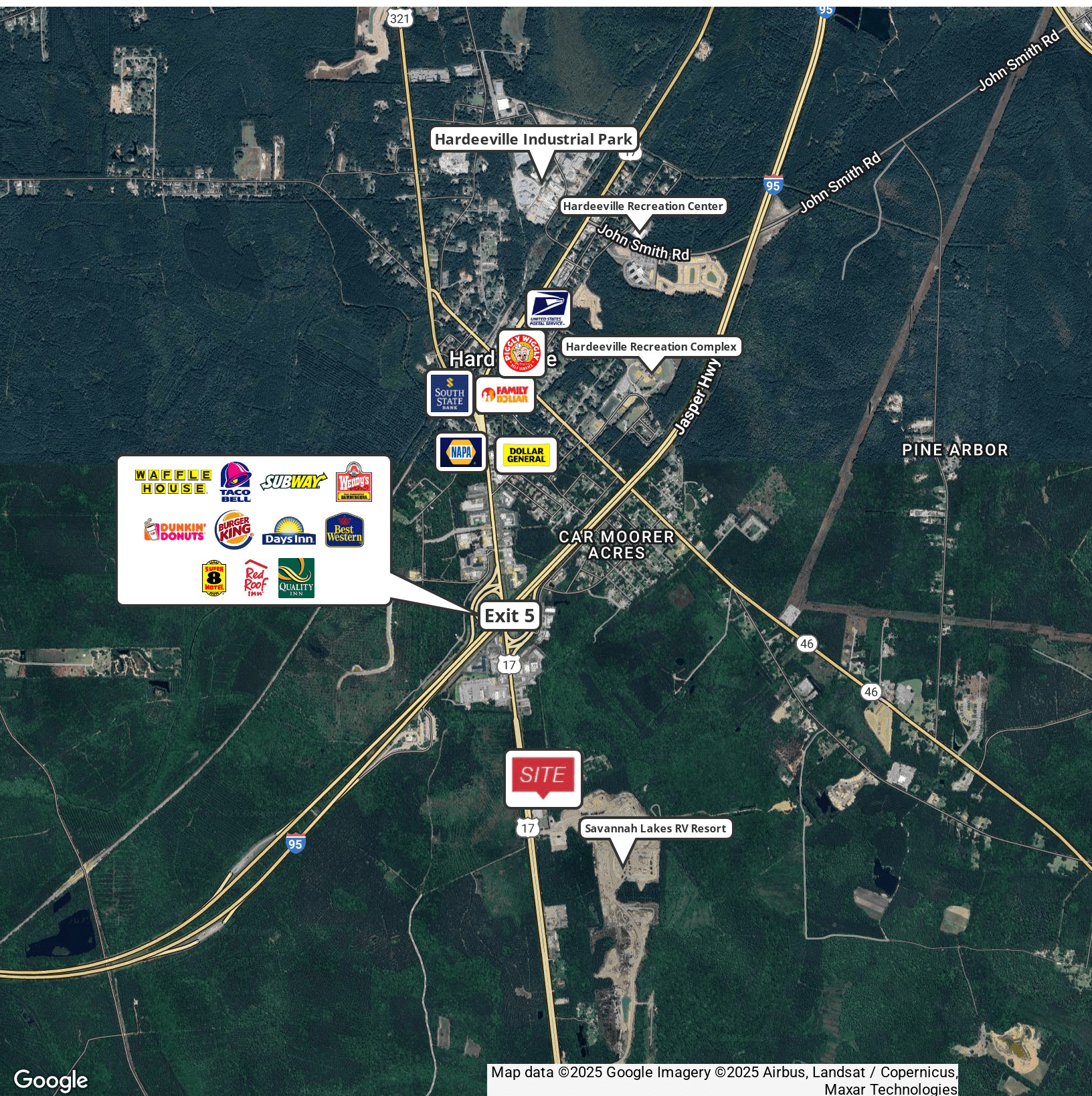






Drive Times (Per Google Maps)

I-95	2 Minutes
South Carolina Riverport Terminal	8 Minutes
Okatie, SC	14 Minutes
Savannah Port Terminal	17 Minutes
Bluffton, SC	18 Minutes
Downtown Savannah	20 Minutes
Hilton Head Island, SC	33 Minutes



Map data ©2025 Google Imagery ©2025 Airbus, Landsat / Copernicus, Maxar Technologies

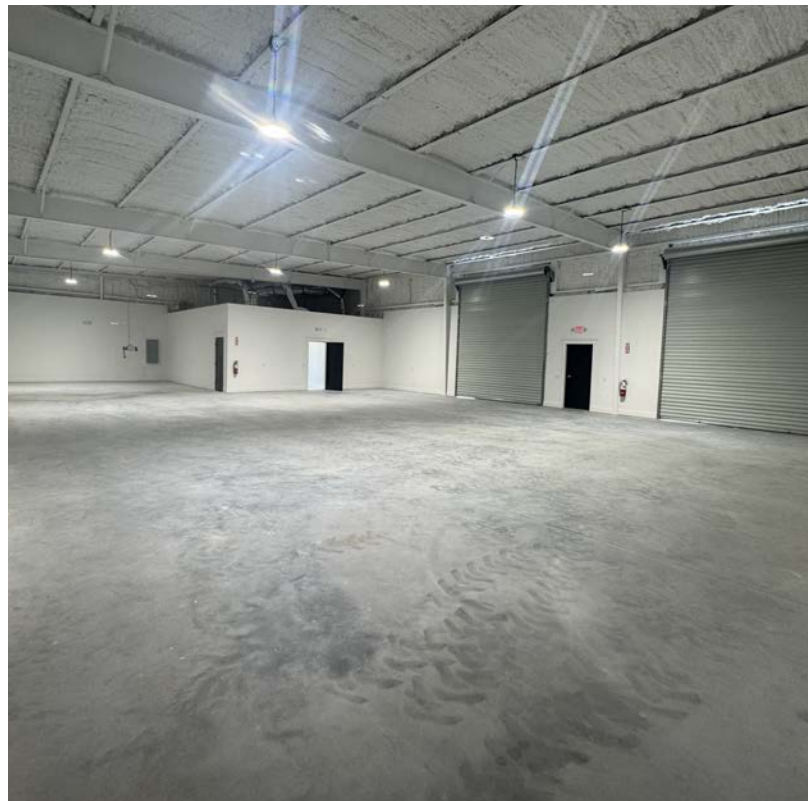




We obtained the information above from sources we believe to be reliable. However, we have not verified its accuracy and make no guarantee, warranty or representation about it. It is submitted subject to the possibility of errors, omissions, change of price, rental or other conditions, prior sale, lease or financing, or withdrawal without notice. We include projections, opinions, assumptions or estimates for example only, and they may not represent current or future performance of the property. You and your tax and legal advisors should conduct your own investigation of the property and transaction.

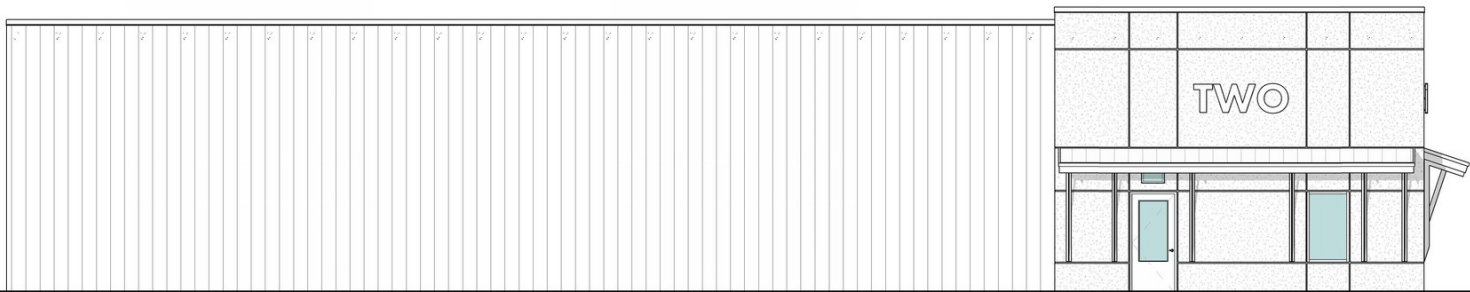
1227 May River Road, Suite 100, Suite 100
Bluffton, SC 29910
843 837 4460 tel
naicarolinacharter.com



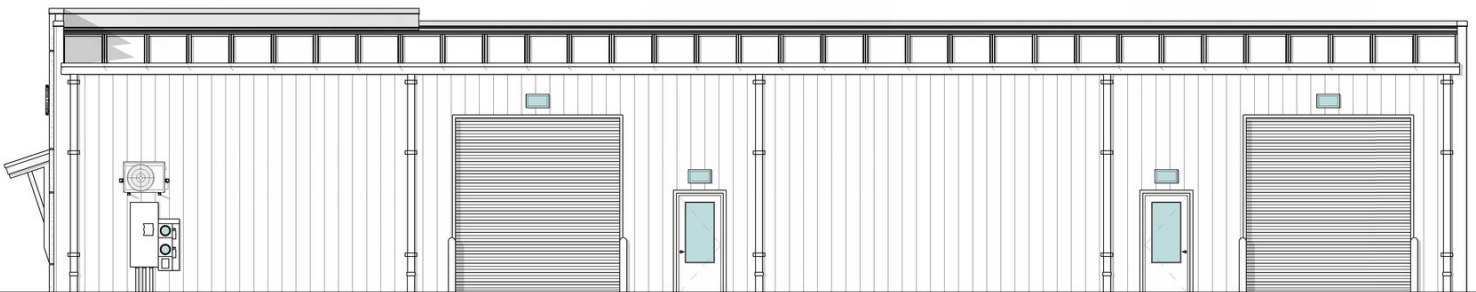


We obtained the information above from sources we believe to be reliable. However, we have not verified its accuracy and make no guarantee, warranty or representation about it. It is submitted subject to the possibility of errors, omissions, change of price, rental or other conditions, prior sale, lease or financing, or withdrawal without notice. We include projections, opinions, assumptions or estimates for example only, and they may not represent current or future performance of the property. You and your tax and legal advisors should conduct your own investigation of the property and transaction.

1227 May River Road, Suite 100, Suite 100
Bluffton, SC 29910
843 837 4460 tel
naicarolinacharter.com



2 FRONT EXTERIOR ELEVATION - MKTG
3/16" = 1'-0"



3 REAR EXTERIOR ELEVATION - MKTG
3/16" = 1'-0"

