

DONNA HOTEL INVESTMENT

2301 E. EXPRESSWAY 83

Donna, TX 78537



SALE PRICE

\$2,800,000

Ernie Garza

956 342 3636

ernest.garza@cbcworldwide.com

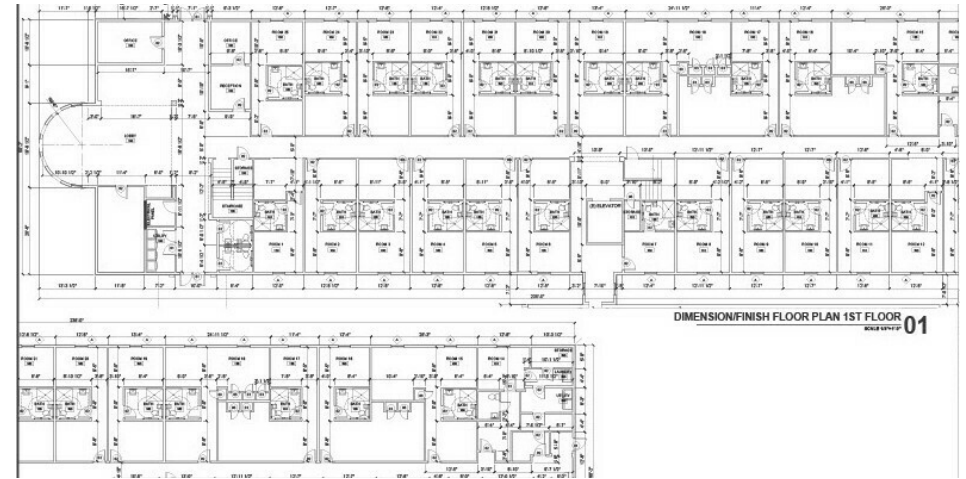
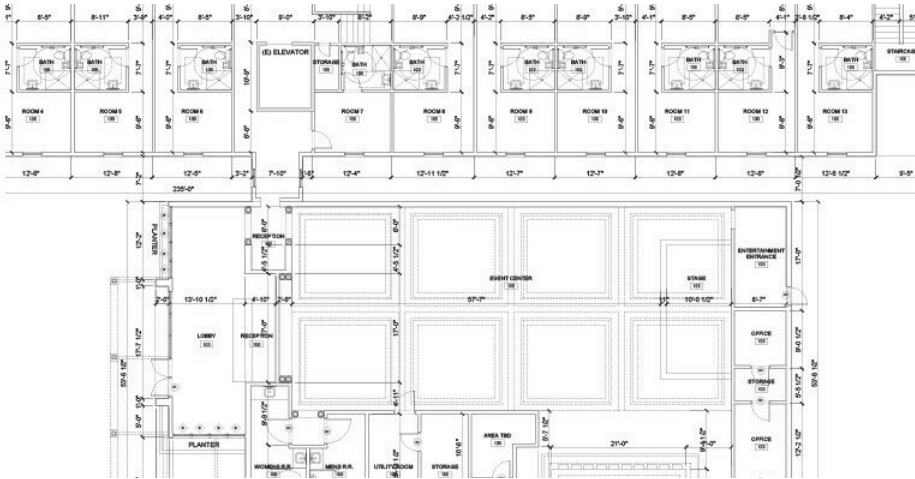


**COLDWELL BANKER
COMMERCIAL**
RIO GRANDE VALLEY

PROPERTY SUMMARY

2301 E. EXPRESSWAY 83

Donna, TX 78537



PROPERTY DESCRIPTION

The Hotel is an interior corridor limited-service Hotel With 48 rentable guest rooms that includes office/lobby, and onsite laundry room with space for a 5,000SF event center. The Hotel Was Built in 2001 and is a a blank canvas as the property has been prepped for redevelopment and not currently operational. It is Situated on a 1.7553-acre Site and includes a gross building area of Approximately 31,299 square feet, According to Hidalgo County Appraisal District.

Included on the property is approximately 5,000SF which could be transformed into an event center to which makes it popular for quinceneras, weddings and family gatherings. Visitors attending such events often need hotels for their stay.

OFFERING SUMMARY

Sale Price:	\$2,800,000
Number of Rooms:	48
Lot Size:	81,627 SF
Building Size:	31,299 SF
Zoning:	CO
APN:	R1336-00-000-0001-00

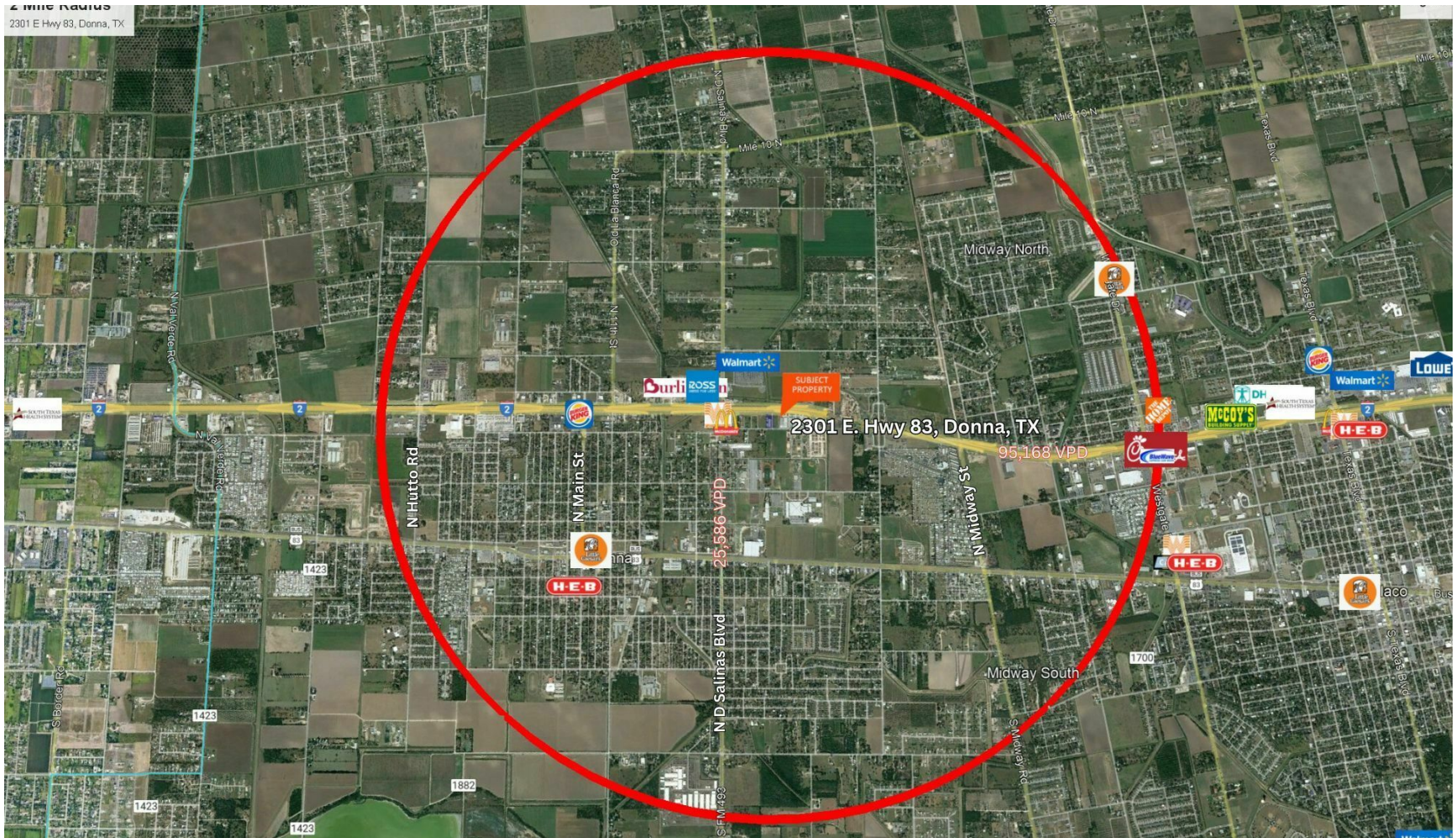
Ernie Garza
 956 342 3636
 ernest.garza@cbcworldwide.com



AERIAL

2301 E. EXPRESSWAY 83

Donna, TX 78537



Ernie Garza
956 342 3636
ernest.garza@cbcworldwide.com



LOW AERIAL

2301 E. EXPRESSWAY 83

Donna, TX 78537



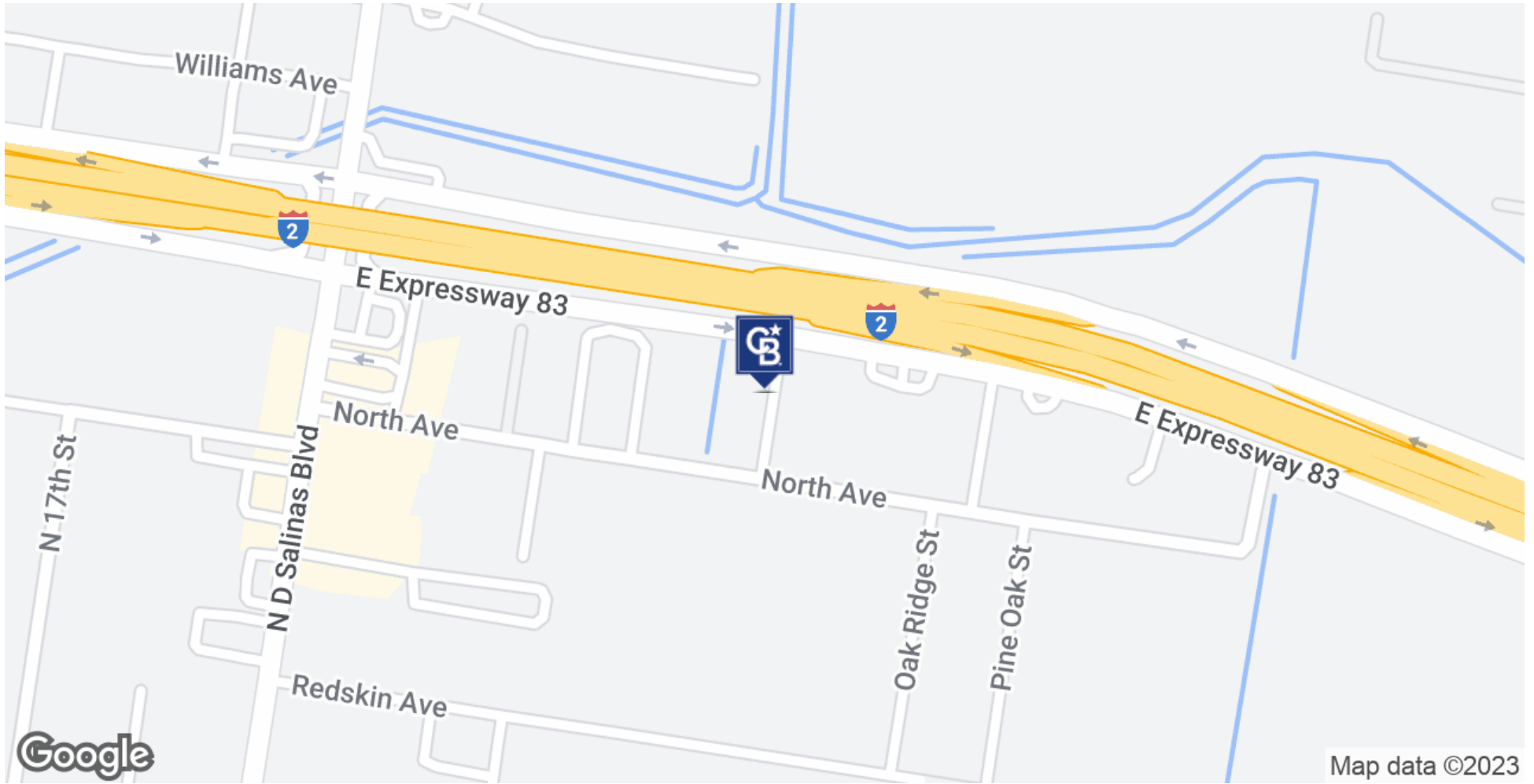
Ernie Garza
956 342 3636
ernest.garza@cbcworldwide.com



MAP

2301 E. EXPRESSWAY 83

Donna, TX 78537



Ernie Garza
956 342 3636
ernest.garza@cbcworldwide.com



**COLDWELL BANKER
COMMERCIAL**
RIO GRANDE VALLEY

DEMOGRAPHICS

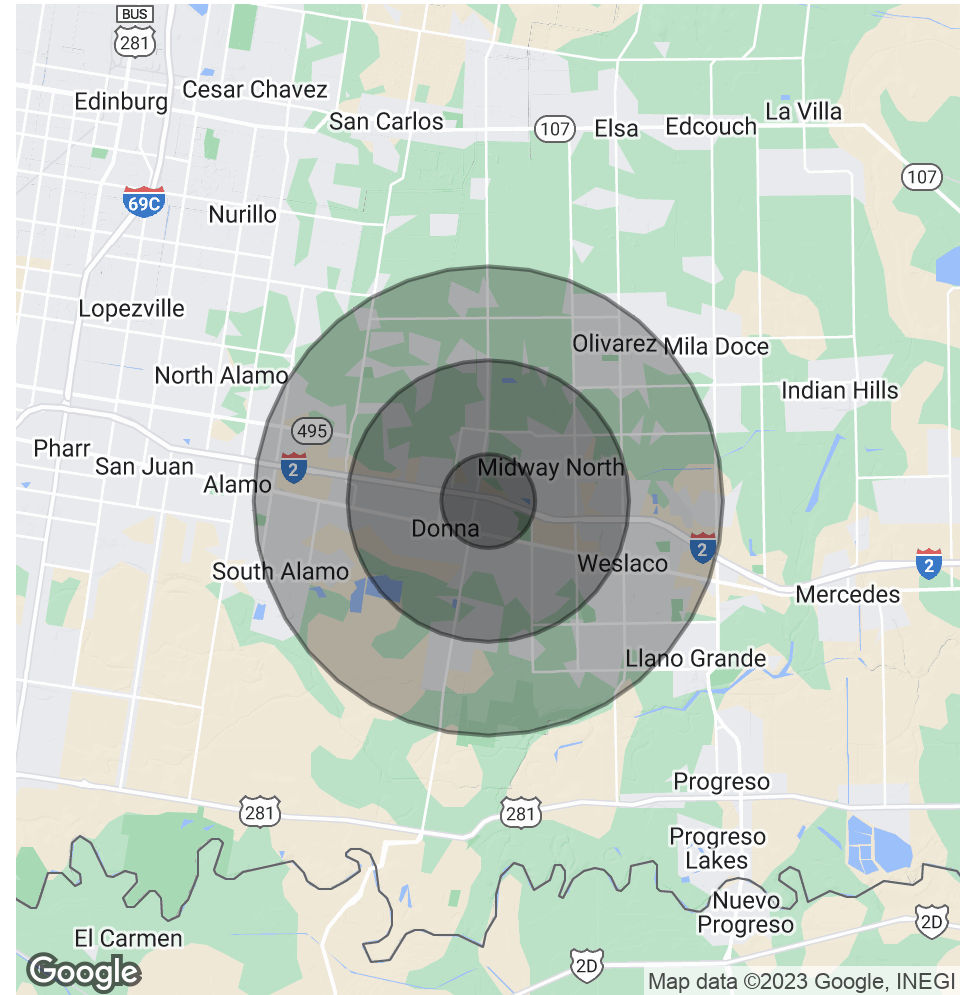
2301 E. EXPRESSWAY 83

Donna, TX 78537

POPULATION	1 MILE	3 MILES	5 MILES
Total Population	3,205	46,306	111,022
Average Age	39.4	30.2	29.4
Average Age (Male)	37.8	29	28
Average Age (Female)	38.5	31.1	30.9

HOUSEHOLDS & INCOME	1 MILE	3 MILES	5 MILES
Total Households	1,316	16,216	38,212
# of Persons per HH	2.4	2.9	2.9
Average HH Income	\$40,356	\$40,597	\$42,743

* Demographic data derived from 2020 ACS - US Census



Ernie Garza
 956 342 3636
 ernest.garza@cbcworldwide.com

