

51716 GRAND RIVER

Wixom, MI 48393



FOR LEASE

248.476.3700

EXCLUSIVELY LISTED BY:

MARK SCHAFFER

Vice President

mschafer@thomasduke.com

MARK SZERLAG

Senior Partner

mszerlag@thomasduke.com

OFFERING SUMMARY: 51716 Grand River | Wixom, MI 48393



PROPERTY OVERVIEW

Industrial manufacturing facility with compressed air lines and process power.

OFFERING SUMMARY

Lease Rate:	\$9,000.00 per month (Gross + Utilities)
Building Size:	14,060 SF
Available SF:	14,060 SF
Year Built:	1978
Renovated:	1999
Zoning:	Light Industrial

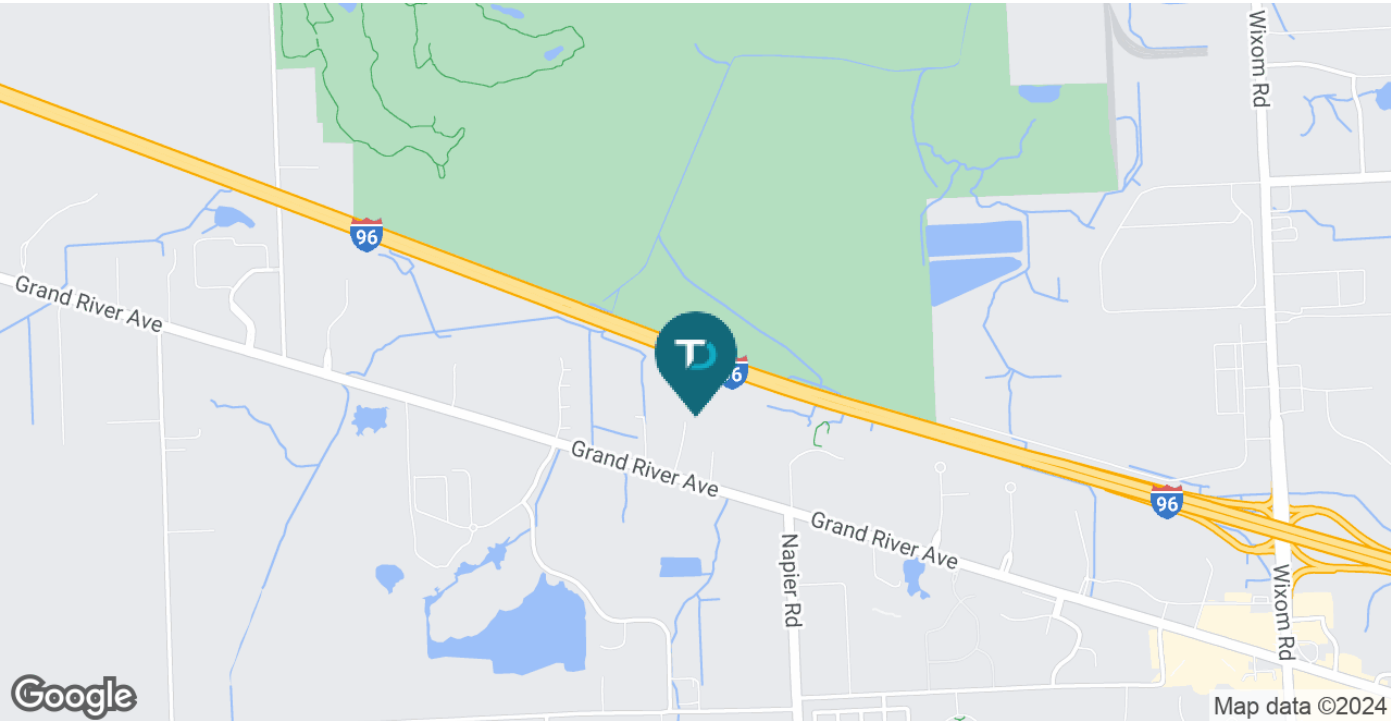
PROPERTY HIGHLIGHTS

- Clear span building w/ 5- ton bridge crane
- Shared exterior truck well
- Fenced outside storage
- 480 V power
- 26' clear height

BUILDING/PROPERTY INFORMATION:
51716 Grand River | Wixom, MI 48393

BUILDING INFORMATION		PROPERTY INFORMATION	
Lease Rate:	\$9,000.00 per month (Gross + Utilities)	Property Type:	Industrial Warehouse
Building Size:	14,060 SF	Zoning	Light Industrial
Available Space:	14,060 SF (600 SF Office)	Traffic Count:	Grand River = 22,492 (CoStar 2022)
Year Built:	1978	APN:	21-12-251-012
Last Renovated:	1999	Utilities:	Well & Septic
Number of Floors:	1	Parking Spaces:	15

LOCATION INFORMATION
North of Grand River, west of Napier Road in Wixom, Michigan.



ADDITIONAL PHOTOS: 51716 Grand River | Wixom, MI 48393



LEASE SPACES: 51716 Grand River | Wixom, MI 48393



LEASE INFORMATION

Lease Type:	Gross + Utilities	Lease Term:	Negotiable
Total Space:	14,060 SF	Lease Rate:	\$9,000.00 per month

AVAILABLE SPACES

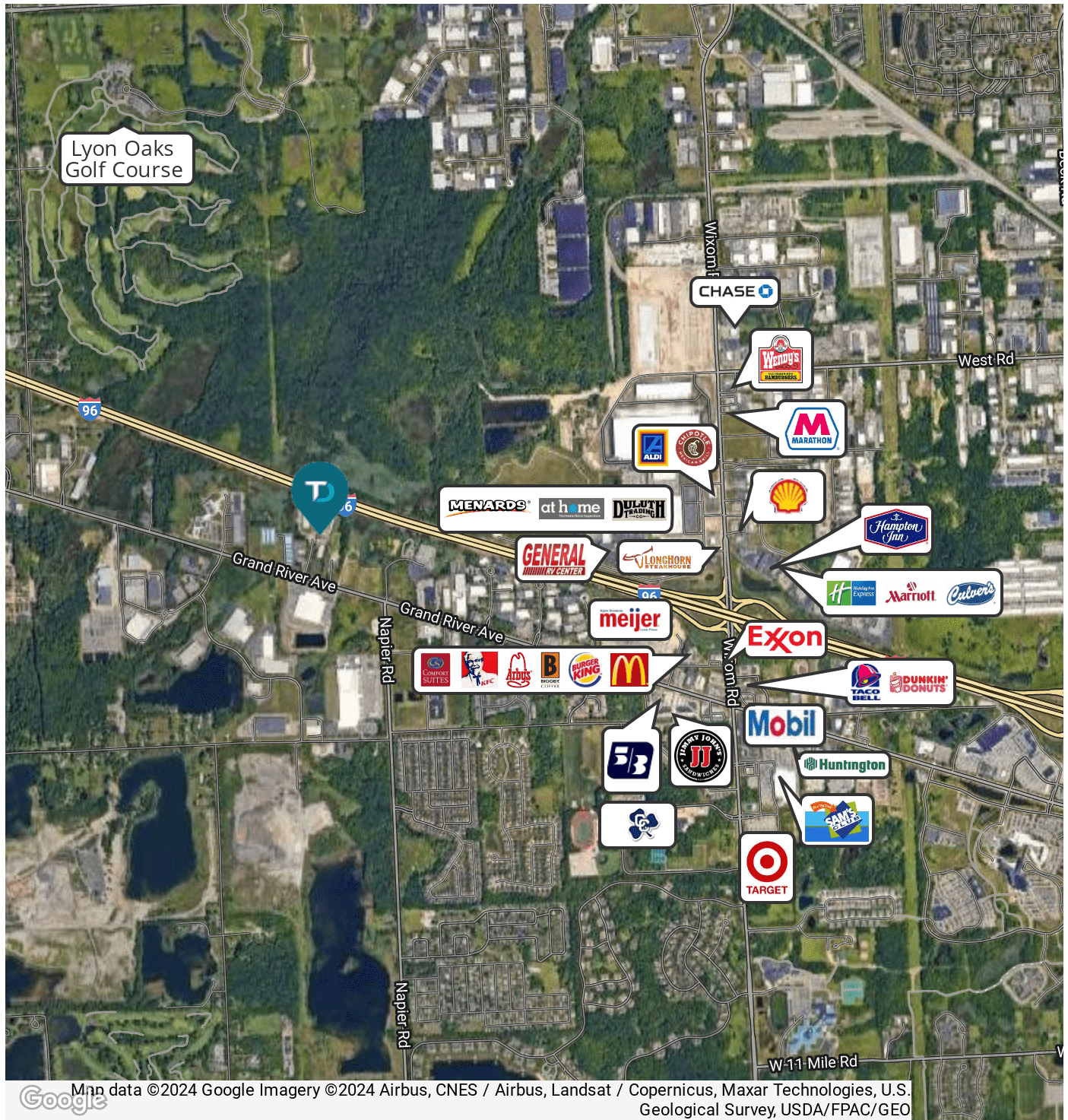
SUITE	TENANT	SIZE (SF)	LEASE TYPE	LEASE RATE	DESCRIPTION
51716	Available	14,060 SF	Gross + Utilities	\$9,000 per month	-

AERIAL MAP: 51716 Grand River | Wixom, MI 48393



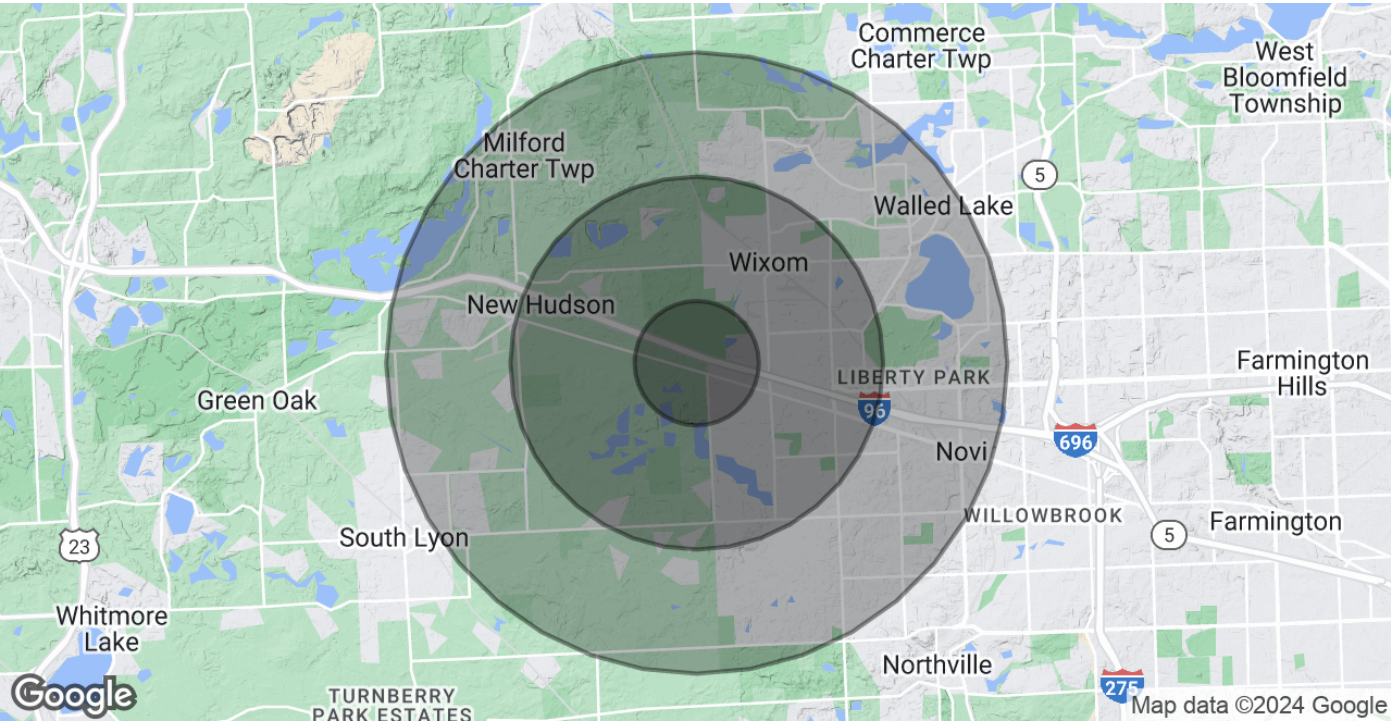
Map data ©2024 Imagery ©2024 CNES / Airbus, Maxar Technologies, U.S. Geological Survey, USDA/FPAC/GEO

RETAILER MAP: 51716 Grand River | Wixom, MI 48393



DEMOGRAPHICS MAP & REPORT:

51716 Grand River | Wixom, MI 48393



	1 MILE	3 MILES	5 MILES
POPULATION			
Total Population	1,768	23,602	85,159
Average Age	34.1	36.6	38.7
Average Age (Male)	32.1	36.8	38.6
Average Age (Female)	35.1	35.9	38.5
HOUSEHOLDS & INCOME			
Total Households	705	10,319	34,225
# of Persons per HH	2.5	2.3	2.5
Average HH Income	\$93,252	\$103,302	\$116,505
Average House Value	\$196,574	\$234,937	\$279,331

* Demographic data derived from 2020 ACS - US Census