

# 1935 65th Avenue, Unit #1

GREELEY, COLORADO 80634



**Lease Rate:**  
**\$16.50/SF**

**NNN =**  
**\$11.00/SF**

**Size:**  
**3,320 SF**

- Office Space For Lease
- 9 Private offices

- Reception Area
- Kitchenette

- Shared Restrooms
- Across from the Youth Sports Complex



**WHEELER**  
Properties

1130 38th Avenue, Suite B • Greeley, CO 80634  
[WheelerPropertiesInc.com](http://WheelerPropertiesInc.com) • 970-352-5860



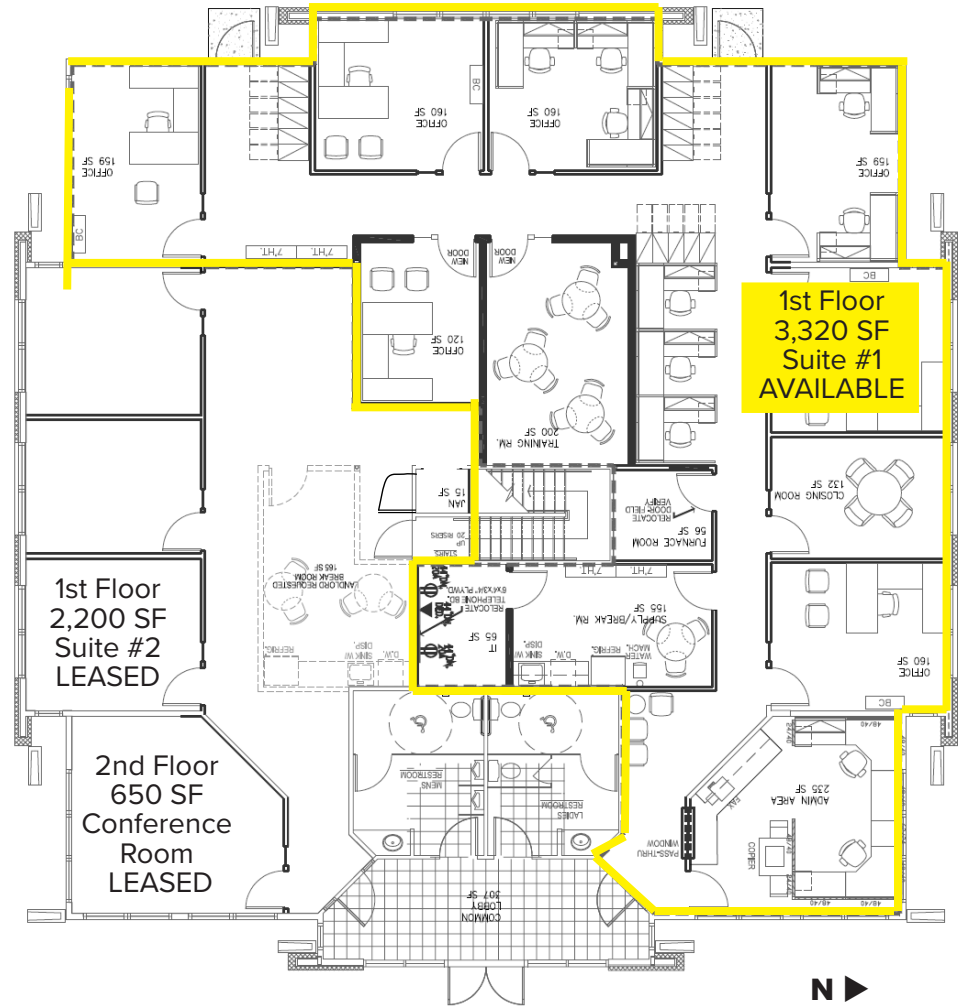
Information deemed reliable, but not guaranteed. Price, terms and conditions subject to change.

Broker Contacts:

Jessica Florez - 970-545-0709

| Ron Randel - 970-590-6222





**WHEELER**  
Properties

1130 38th Avenue, Suite B • Greeley, CO 80634  
[WheelerPropertiesInc.com](http://WheelerPropertiesInc.com) • 970-352-5860



Information deemed reliable, but not guaranteed. Price, terms and conditions subject to change.

Broker Contacts:

Jessica Florez - 970-545-0709

| Ron Randel - 970-590-6222