

7700 E. Michigan Ave

Saline, MI

UP TO 360,700 SF AVAILABLE



SUBLEASE
SPACE

Contact Us

Eugene J. Agnone III
Senior Vice President
+1 248 351 2024
eugene.agnone@cbre.com

Blake Burstein
Associate
+1 248 936 6890
blake.burstein@cbre.com

360,700 SF AVAILABLE
7700 E. Michigan Ave, Saline, MI

For Sublease

Property Features

360,700

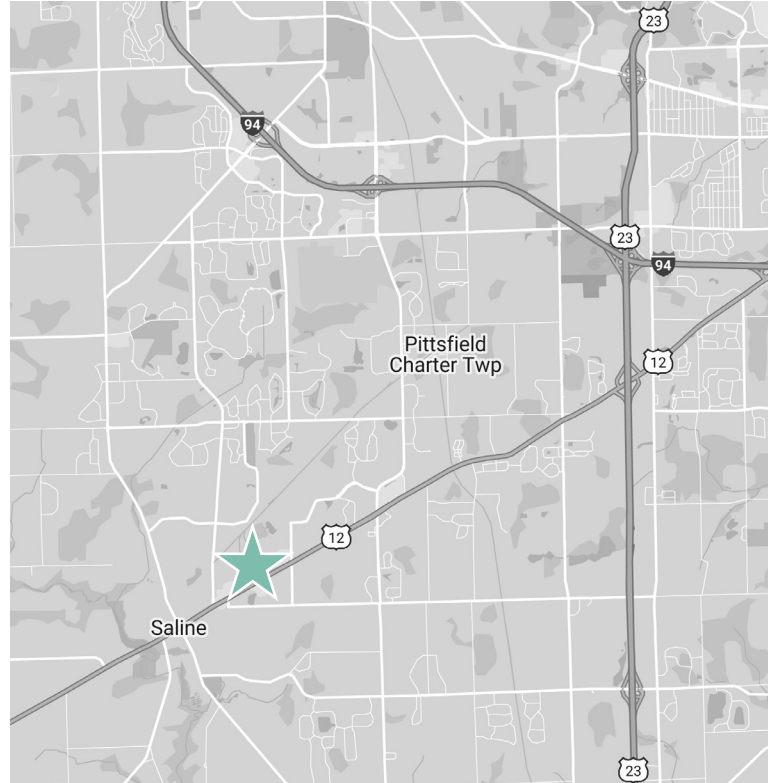
Available Square Footage

12,000

Office Space Square Footage

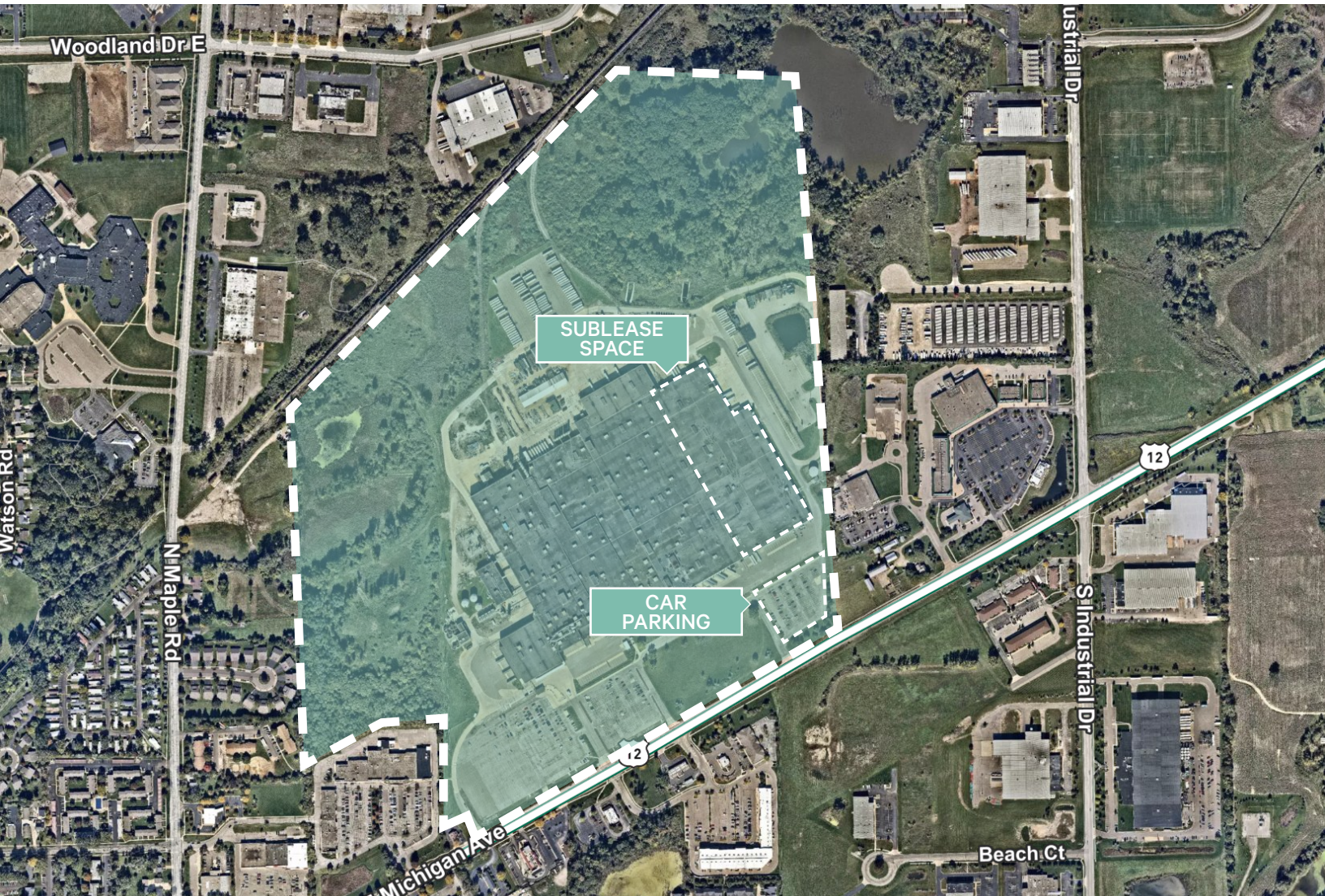
I-4

Zoned



Year Built	1960; 2010	Parking	Up to 200 Spaces
Min/Max Available	100,000 - 360,700 SF	Power	2000 Amps (Double Ended)
Office Space	12,000 SF	Security System	TBD
Clear Height	22' - 23'8"	Overhead Doors	Five (5)
Column Spacing	45' x 50'	Dock Doors	Nineteen (19)
Depth	+/- 400'	Cranes	One (1) 5-Ton
Roof	New Roof Installed 2021/2022	Sprinklers	Yes

Property Features



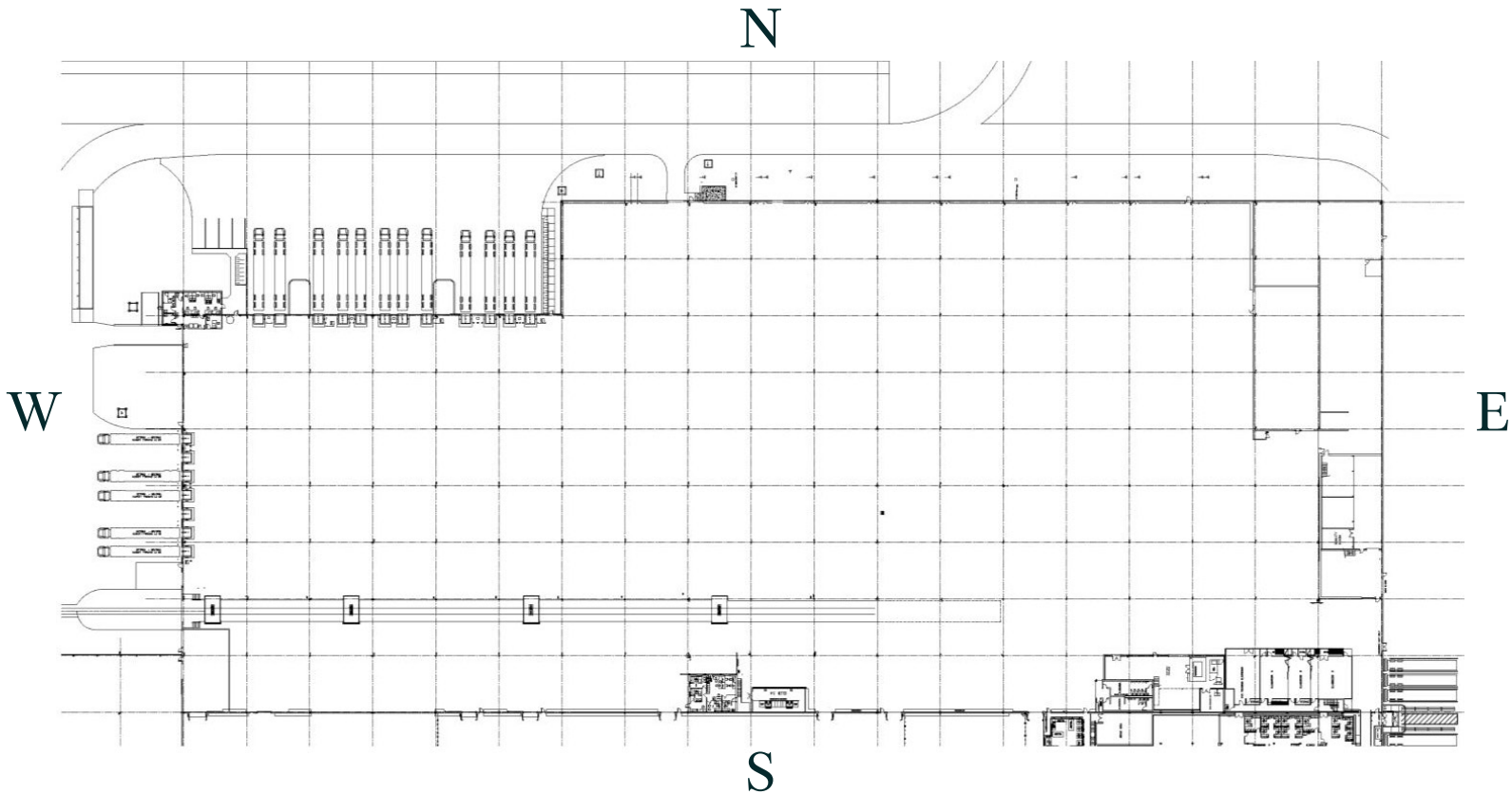
Comments

- Up to 360,700 SF
- 12,000 SF of Office Space
- 22' - 23'8" Clear Height
- 19 Truck Docks / 5 Grade Doors
- Heavy Power
- Up to 200 Car Parking Spaces
- Abundant Trailer Staging Possible
- New Roof Installed in 2021/2022
- Tenant Improvements Can Be Negotiable
- Primary Lease Expires May 31, 2031
- Sublease Rate: \$4.25 PSF NNN
- Available Immediately

360,700 SF AVAILABLE
7700 E. Michigan Ave, Saline, MI

For Sublease

Floor Plan



Contact Us

Eugene J. Agnone III
Senior Vice President
+1 248 351 2024
eugene.agnone@cbre.com

Blake Burstein
Associate
+1 248 936 6890
blake.burstein@cbre.com

© 2022 CBRE, Inc. All rights reserved. This information has been obtained from sources believed reliable, but has not been verified for accuracy or completeness. You should conduct a careful, independent investigation of the property and verify all information. Any reliance on this information is solely at your own risk. CBRE and the CBRE logo are service marks of CBRE, Inc. All other marks displayed on this document are the property of their respective owners, and the use of such logos does not imply any affiliation with or endorsement of CBRE. Photos herein are the property of their respective owners. Use of these images without the express written consent of the owner is prohibited.