

INDUSTRIAL PROPERTY FOR SALE

# 15210 FITZHUGH ROAD

AUSTIN, TX 78736



**GUY OBERG**

512.633.0369  
guy.oberg@compass.com  
TX #534590

**COMPASS COMMERCIAL**



2500 Bee Cave Rd, Ste 200, Bldg 3

Austin, TX 78746

[theobergroup.com](http://theobergroup.com)

# 2 TABLE OF CONTENTS

## TABLE OF CONTENTS

PROPERTY INFORMATION	3
LOCATION INFORMATION	8
FINANCIAL ANALYSIS	12
DEMOGRAPHICS	14
ADVISOR BIOS	16

## CONFIDENTIALITY & DISCLAIMER

All materials and information received or derived from The Oberg Group at Compass RE Texas, LLC its directors, officers, agents, advisors, affiliates and/or any third party sources are provided without representation or warranty as to completeness, veracity, or accuracy, condition of the property, compliance or lack of compliance with applicable governmental requirements, developability or suitability, financial performance of the property, projected financial performance of the property for any party's intended use or any and all other matters.

Neither The Oberg Group at Compass RE Texas, LLC its directors, officers, agents, advisors, or affiliates makes any representation or warranty, express or implied, as to accuracy or completeness of the any materials or information provided, derived, or received. Materials and information from any source, whether written or verbal, that may be furnished for review are not a substitute for a party's active conduct of its own due diligence to determine these and other matters of significance to such party. The Oberg Group at Compass RE Texas, LLC will not investigate or verify any such matters or conduct due diligence for a party unless otherwise agreed in writing.

EACH PARTY SHALL CONDUCT ITS OWN INDEPENDENT INVESTIGATION AND DUE DILIGENCE.

Any party contemplating or under contract or in escrow for a transaction is urged to verify all information and to conduct their own inspections and investigations including through appropriate third party independent professionals selected by such party. All financial data should be verified by the party including by obtaining and reading applicable documents and reports and consulting appropriate independent professionals. The Oberg Group at Compass RE Texas, LLC makes no warranties and/or representations regarding the veracity, completeness, or relevance of any financial data or assumptions. The Oberg Group at Compass RE Texas, LLC does not serve as a financial advisor to any party regarding any proposed transaction. All data and assumptions regarding financial performance, including that used for financial modeling purposes, may differ from actual data or performance. Any estimates of market rents and/or projected rents that may be provided to a party do not necessarily mean that rents can be established at or increased to that level. Parties must evaluate any applicable contractual and governmental limitations as well as market conditions, vacancy factors and other issues in order to determine rents from or for the property.

Legal questions should be discussed by the party with an attorney. Tax questions should be discussed by the party with a certified public accountant or tax attorney. Title questions should be discussed by the party with a title officer or attorney. Questions regarding the condition of the property and whether the property complies with applicable governmental requirements should be discussed by the party with appropriate engineers, architects, contractors, other consultants and governmental agencies. All properties and services are marketed by The Oberg Group at Compass RE Texas, LLC in compliance with all applicable fair housing and equal opportunity laws.

## GUY OBERG

512.633.0369  
guy.oberg@compass.com  
TX #534590

COMPASS COMMERCIAL



INDUSTRIAL PROPERTY FOR SALE

# 15210 FITZHUGH ROAD

AUSTIN, TX 78736



PROPERTY INFORMATION

**GUY OBERG**

512.633.0369  
guy.oberg@compass.com  
TX #534590

**COMPASS COMMERCIAL**



# 4 EXECUTIVE SUMMARY



## OFFERING SUMMARY

Sale Price:	\$5,620,000
Building Size:	22,300 SF
Available SF:	0
Year Built:	2022-2023
Price / SF:	\$252.02
Cap Rate:	7.27%
NOI:	\$408,721
Zoning:	County
Market:	Austin
Submarket:	Southwest

## PROPERTY OVERVIEW

Rare opportunity to acquire three fully leased flex-industrial buildings on true NNN leases, delivering \$408,000 in annual NOI with 3% annual rent escalations. Constructed between 2022–2023, these modern, low-maintenance assets are designed for long-term durability, energy efficiency, and tenant retention.

Each suite is fully air-conditioned and features 20' clear heights, 14' x 12' roll-up doors, polished concrete floors, private bathroom and kitchenette, and vinyl plank flooring in office areas. Buildings are highly energy efficient with R-30 ceiling insulation, 3" wall insulation, and R-15 insulated office buildouts, contributing to lower operating costs and strong tenant satisfaction.

The property benefits from rainwater collection systems, HOA-managed shared septic, and a favorable 1.7% tax rate, further enhancing net returns. Located in a highly affluent trade area with \$150,000+ average household incomes, the site sits squarely in the Hays County growth corridor, just minutes from Lake Travis, Dripping Springs, and Westlake—one of Central Texas' most supply-constrained industrial submarkets.

Ideal for investors seeking stable, passive income backed by newer construction, strong demographics, and long-term growth fundamentals.

## GUY OBERG

512.633.0369  
guy.oberg@compass.com  
TX #534590

COMPASS COMMERCIAL



# 5 PROPERTY DESCRIPTION



## PROPERTY DESCRIPTION

Rare opportunity to acquire three fully leased flex-industrial buildings on true NNN leases, delivering \$408,000 in annual NOI with 3% annual rent escalations. Constructed between 2022–2023, these modern, low-maintenance assets are designed for long-term durability, energy efficiency, and tenant retention.

Each suite is fully air-conditioned and features 20' clear heights, 14' x 12' roll-up doors, polished concrete floors, private bathroom and kitchenette, and vinyl plank flooring in office areas. Buildings are highly energy efficient with R-30 ceiling insulation, 3" wall insulation, and R-15 insulated office buildouts, contributing to lower operating costs and strong tenant satisfaction.

The property benefits from rainwater collection systems, HOA-managed shared septic, and a favorable 1.7% tax rate, further enhancing net returns. Located in a highly affluent trade area with \$150,000+ average household incomes, the site sits squarely in the Hays County growth corridor, just minutes from Lake Travis, Dripping Springs, and Westlake—one of Central Texas' most supply-constrained industrial submarkets.

Ideal for investors seeking stable, passive income backed by newer construction, strong demographics, and long-term growth fundamentals.

## LOCATION DESCRIPTION

Great location in the Dripping Springs/West Austin Area. Beautiful area in the hill country with tons of wedding venues, breweries, and vineyards. No zoning. Huge Growth Corridor with easy access to Austin. Great schools, Low tax rate, and much more is happening in this part of town.

## GUY OBERG

512.633.0369  
guy.oberg@compass.com  
TX #534590

COMPASS COMMERCIAL



# 6 COMPLETE HIGHLIGHTS



## PROPERTY HIGHLIGHTS

- \$408K NOI on four fully leased NNN buildings with 3% annual rent increases.
- Newer construction (2022–2023) with 20' clear heights, 14' x 12' roll-up doors, and full HVAC.
- Low-maintenance, energy-efficient design with rainwater collection, high-R insulation, and shared septic.
- Tenant-ready suites featuring private bathrooms, kitchenettes, polished concrete, and vinyl plank offices.
- Prime Hays County growth corridor in a \$150K+ income area, minutes from Lake Travis, Dripping Springs, and Westlake.
- Stabilized, passive income backed by long-term NNN leases and predictable annual escalations.
- Institutional-quality flex product with modern specs designed to outperform older industrial stock.
- Exceptionally low operating risk with newer systems, minimal deferred maintenance, and efficient construction.
- Strong tenant demand drivers from affluent surrounding neighborhoods and limited competing supply.
- Infill Hill Country location offering long-term value growth within one of Central Texas' fastest-growing corridors.

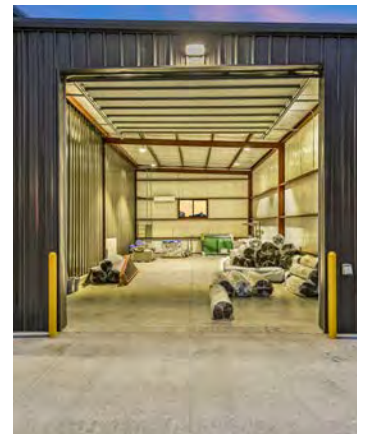
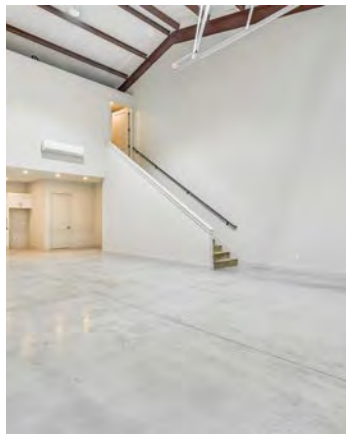
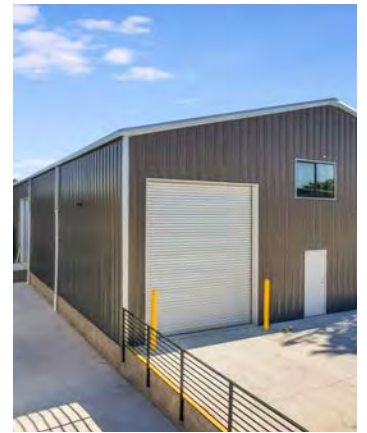
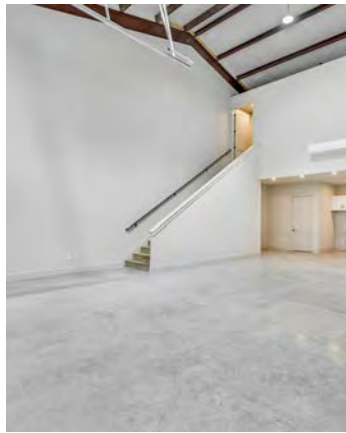
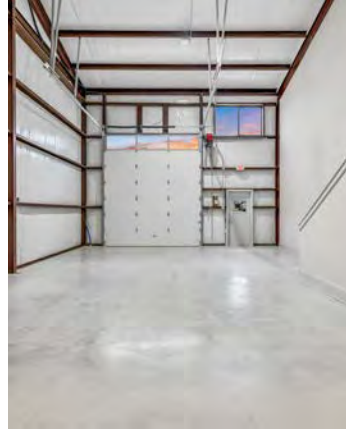
## GUY OBERG

512.633.0369  
guy.oberg@compass.com  
TX #534590

COMPASS COMMERCIAL



# 7 ADDITIONAL PHOTOS



**GUY OBERG**

512.633.0369  
guy.oberg@compass.com  
TX #534590

**COMPASS COMMERCIAL**

 The  
Oberg  
Group  
**COMPASS**

2500 Bee Cave Rd, Ste 200, Bldg 3

Austin, TX 78746

[theobergroup.com](http://theobergroup.com)

INDUSTRIAL PROPERTY FOR SALE

# 15210 FITZHUGH ROAD

AUSTIN, TX 78736



LOCATION INFORMATION

**GUY OBERG**

512.633.0369  
guy.oberg@compass.com  
TX #534590

**COMPASS COMMERCIAL**



2500 Bee Cave Rd, Ste 200, Bldg 3

Austin, TX 78746

[theobergroup.com](http://theobergroup.com)



# 10 FITZHUGH OFFICE/WAREHOUSE RETAILER MAP



**GUY OBERG**  
512.633.0369  
guy.oberg@compass.com  
TX #534590

**COMPASS COMMERCIAL**



# 11 AERIAL MAP



**GUY OBERG**

512.633.0369  
guy.oberg@compass.com  
TX #534590

**COMPASS COMMERCIAL**

 The  
Oberg  
Group  
**COMPASS**

INDUSTRIAL PROPERTY FOR SALE

# 15210 FITZHUGH ROAD

AUSTIN, TX 78736



FINANCIAL ANALYSIS

**GUY OBERG**

512.633.0369  
guy.oberg@compass.com  
TX #534590

**COMPASS COMMERCIAL**



2500 Bee Cave Rd, Ste 200, Bldg 3

Austin, TX 78746

[theobergroup.com](http://theobergroup.com)

# 13 RENT ROLL

SUITE	TENANT NAME	SIZE SF	% OF BUILDING	ESCALATION DATES	PRICE / SF / YEAR	MARKET RENT	MARKET RENT / SF	ANNUAL RENT	LEASE START	LEASE END
700	D&F International Group LLC.	3,150 SF	14.13%	-	\$17.40	-	-	\$54,810	9/1/23	8/31/26
701A	Zellie's LLC	3,150 SF	14.13%	-	\$16.50	-	-	\$51,975	10/1/25	7/31/27
701B	Daniel Nielsen	1,300 SF	5.83%		\$21.60 \$21.63	-	-	\$28,080	10/11/24	10/31/27
900	Cannon Holdings of Texas Inc.	1,775 SF	7.96%		\$21.63 \$21.63	-	-	\$38,393	10/1/24	10/31/27
901	Comanche Energy Partners LLC	1,775 SF	7.96%		\$18.99 \$19.32 \$19.66	-	-	\$33,700	2/1/26	1/31/29
902	Gatsby Glass of South Austin	1,775 SF	7.96%		\$20.09 \$20.69 \$21.31 \$21.95 \$22.61 \$23.28 \$23.98 \$24.70 \$25.44	-	-	\$35,660	4/1/24	3/31/33
903	Bee Cave Integrative LLC.	1,775 SF	7.96%		\$21.63 \$22.28	-	-	\$38,393	4/1/24	3/31/27
903B	Buckhorn Holdings LLC.	1,250 SF	5.61%		\$15.48 \$15.96	-	-	\$19,350	10/1/23	9/30/26
1000	Corridor Services LLC.	3,150 SF	14.13%	-	\$17.40	-	-	\$54,810	4/1/23	3/31/26
1001	Jennifer Regan	3,150 SF	14.13%		\$17.00 \$17.51	-	-	\$53,550	4/1/24	3/31/27
<b>TOTALS</b>		<b>22,250 SF</b>	<b>99.80%</b>		<b>\$187.72</b>	<b>\$0</b>	<b>\$0.00</b>	<b>\$408,721</b>		
<b>AVERAGES</b>		<b>2,225 SF</b>	<b>9.98%</b>		<b>\$18.77</b>			<b>\$40,872</b>		

## GUY OBERG

512.633.0369  
guy.oberg@compass.com  
TX #534590

COMPASS COMMERCIAL



INDUSTRIAL PROPERTY FOR SALE

# 15210 FITZHUGH ROAD

AUSTIN, TX 78736

4  
DEMOGRAPHICS

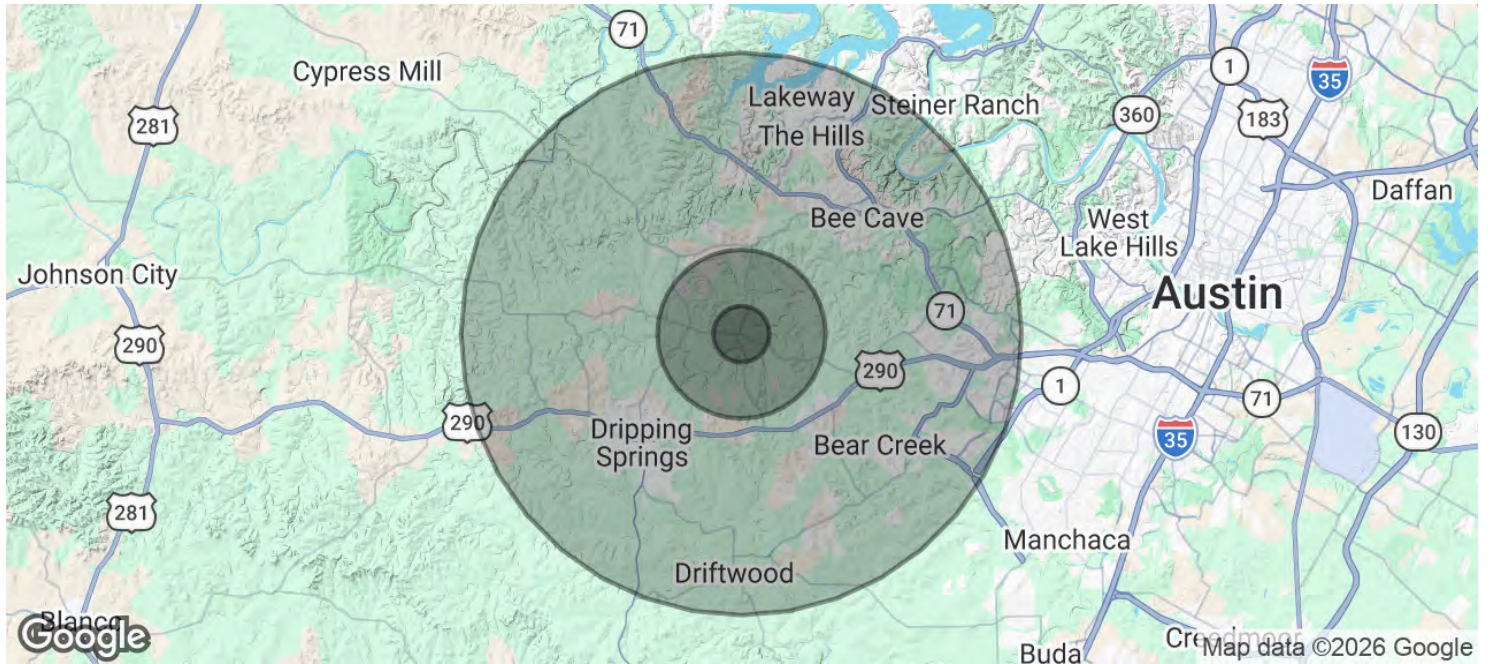
**GUY OBERG**

512.633.0369  
guy.oberg@compass.com  
TX #534590

**COMPASS COMMERCIAL**



# 15 DEMOGRAPHICS MAP & REPORT



POPULATION	1 MILE	3 MILES	10 MILES
Total Population	567	8,730	182,999
Average Age	41	40	40
Average Age (Male)	40	39	40
Average Age (Female)	41	41	41

HOUSEHOLDS & INCOME	1 MILE	3 MILES	10 MILES
Total Households	202	3,080	68,291
# of Persons per HH	2.8	2.8	2.7
Average HH Income	\$186,094	\$200,594	\$194,330
Average House Value	\$739,401	\$776,723	\$790,849

Demographics data derived from AlphaMap

## GUY OBERG

512.633.0369  
guy.oberg@compass.com  
TX #534590

COMPASS COMMERCIAL



INDUSTRIAL PROPERTY FOR SALE

# 15210 FITZHUGH ROAD

AUSTIN, TX 78736



ADVISOR BIOS

**GUY OBERG**

512.633.0369  
guy.oberg@compass.com  
TX #534590

**COMPASS COMMERCIAL**



2500 Bee Cave Rd, Ste 200, Bldg 3

Austin, TX 78746

[theobergroup.com](http://theobergroup.com)

# 17 ADVISOR BIO 1



## GUY OBERG

Broker Associate

[guy.oberg@compass.com](mailto:guy.oberg@compass.com)

Direct: 512.633.0369

TX #534590

### PROFESSIONAL BACKGROUND

Guy is a lifelong resident of Austin, TX, and it shows! Having attended Lake Travis High School and subsequently The University of Texas at Austin, he graduated with a B.A. in Economics in 2005. He began his career immediately upon graduation, joining the family business—Oberg Properties. Guy worked hard to hone his skills and develop his client base, becoming a Broker in 2009 and joining Compass in 2018.

Perhaps Guy's finest quality is a casual ease that, when paired with his knowledge and experience, makes him a superb real estate professional. He genuinely enjoys working with clients to find their place in the one he loves best—Austin, Central Texas, and the Texas Hill Country. His familiarity with the area is unmatched, and he is one of those people who has never met a stranger. His clients love him!

Guy and his business have steadily grown over the years, exploding since joining Compass. In addition to his solid foundation in Residential Sales and Leasing, he has also developed vast experience in Commercial Real Estate. Guy is confident in land development and acquisitions, sales and leasing in multifamily, retail, office and industrial properties.

An entrepreneur at heart, Guy's skill and insight is not limited to real estate. He is Guy is a Co-Founder of Blue Sky RV Living which owns five RV Resorts in Texas with over 600 units and another 500+ units in development since 2020. He is also Co-Founder of Quantum Mobility, a company that is helping reduce increasing congestion and our carbon footprint, while providing premium and electric vehicles at a reduced cost for use in car sharing as an amenity at apartment communities, hotels, condo residences, businesses, and private and public airports.

Whether Guy is working with first time homebuyers, national developers, or investors, his dogged work ethic and expertise make him ideal for any business venture.

The Oberg Group at Compass RE Texas, LLC

2500 Bee Cave Rd, Ste 200, Bldg 3

Austin, TX 78746

### GUY OBERG

512.633.0369

[guy.oberg@compass.com](mailto:guy.oberg@compass.com)

TX #534590

COMPASS COMMERCIAL

