

Orem Industrail Unit

1160 W 675 N | Orem, UT 84057

FOR LEASE



PROPERTY HIGHLIGHTS

- Monthly Base Rent - \$2,000
- Monthly NNN - \$246.40
- ± 1,232 Sq Ft
- One Office
- One Bathroom
- Close proximity to I-15
- Close proximity to major retailers

**LEASE RATE:
\$1.62/SF NNN**



3768 N University Ave. Suite 204
Provo, Utah 84604
www.andersoncrg.com

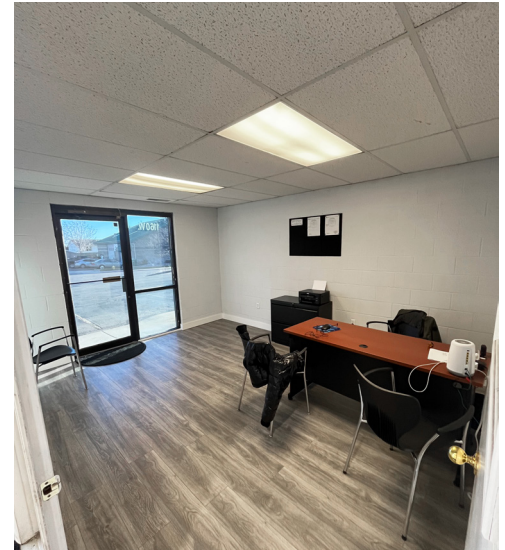
Caden Bryan
Agent
Caden@andersoncrg.com
(435) 881-7294

The offering is presented solely for informational purposes and is submitted subject to errors, omissions, change of price, rental or other terms, withdrawal without notice, and to any special listing conditions imposed by the seller. No warranty of representation, express or implied, is made as to the accuracy of the information contained herein and buyers and tenants are encouraged to conduct their own due diligence and research regarding the property.

Orem Industrial Unit

1160 W 675 N | Orem, UT 84057

FOR LEASE



DEMOGRAPHICS

	1 MILE	3 MILE	5 MILE
Population			
2023	18,809	59,831	186,111
Households			
2023	6,147	18,474	57,420
Income			
2023 Median HHI	\$77,170	\$78,975	\$82,131



Nearby Retailers



3768 N University Ave. Suite 204
Provo, Utah 84604
www.andersoncrg.com

Caden Bryan

Agent
Caden@andersoncrg.com

(435) 881-7294

The offering is presented solely for informational purposes and is submitted subject to errors, omissions, change of price, rental or other terms, withdrawal without notice, and to any special listing conditions imposed by the seller. No warranty of representation, express or implied, is made as to the accuracy of the information contained herein and buyers and tenants are encouraged to conduct their own due diligence and research regarding the property.