

**Immediate Occupancy Available!**

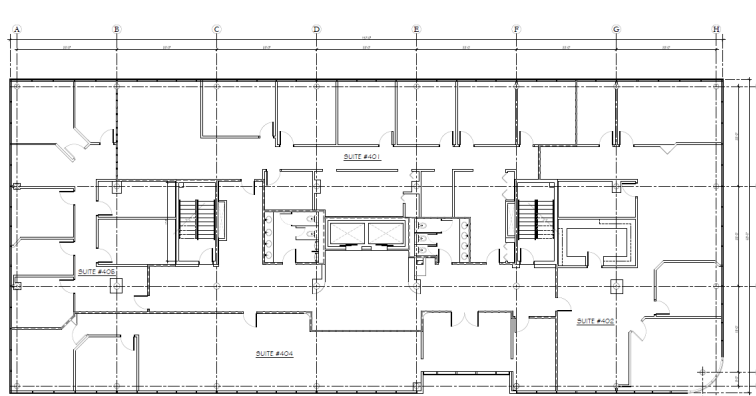





**2151 W Hillsboro Blvd,  
Deerfield Beach, FL 33442**

## Key Features

- Rental Rate: \$25.00-\$27.00/sq ft MG
- Min. Divisible: 1,095 SF
- Max 7,153 sq ft
- Property Type: Office
- Property Subtype: Medical
- Rentable Building Area: 40,841 SF
- Building Class: B
- Transit Score ®: 30 (Some Transit)
- Rental Rate Mo: \$2.25 USD/SF/Mo

## Floor Plan



 Lexie Power  443-370-7407  [lp@tripledouble.com](mailto:lp@tripledouble.com)

