

11311 Bridgeport Way SW | Lakewood, WA

St. Clare Medical Pavilion

FOR LEASE

CLASS A OUTPATIENT MEDICAL SPACE
ON THE ST. CLARE CAMPUS



1,267 - 2,449 RSF AVAILABLE

Healthpeak

DOC
LISTED
NYSE

CBRE

PROPERTY HIGHLIGHTS

1,267 - 2,449 RSF AVAILABLE

- Affiliated with Virginia Mason Franciscan Health
- On-Campus Class A Medical Outpatient Building
- Abundant On-Site Free Parking
- On-Site Professional Property Management
- Diverse Mix of Synergetic Medical Tenants



AVAILABILITIES

- Suite 201: 1,587 RSF
- Suite 202: 1,267 RSF (2,449 RSF Contiguous with Suite 204)
- Suite 204: 1,182 RSF (2,449 RSF Contiguous with Suite 202)



TACOMA

LAKEWOOD TOWN CENTER

ST. CLARE HOSPITAL CAMPUS

St. Clare Medical Pavilion

LAKEWOOD LIGHT RAIL STATION

BRIDGEPORT WAY SW

PACIFIC HWY SW



LOCATION

AMENITIES & ACCESS





St. Clare Medical Pavilion

ON-CAMPUS LOCATION



PATIENT DROP-OFF AREA



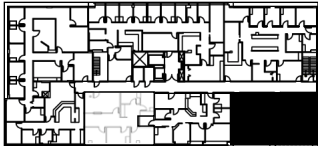
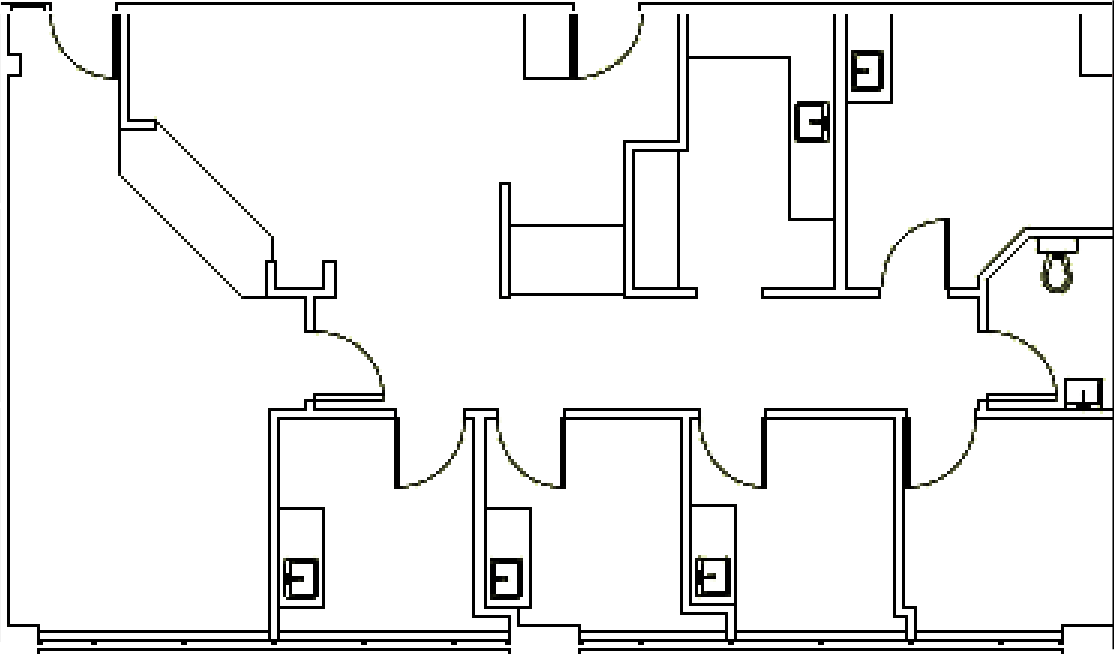
BUILDING LOBBY



ON-SITE FREE PARKING

SUITE 201

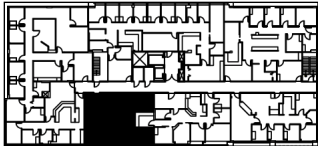
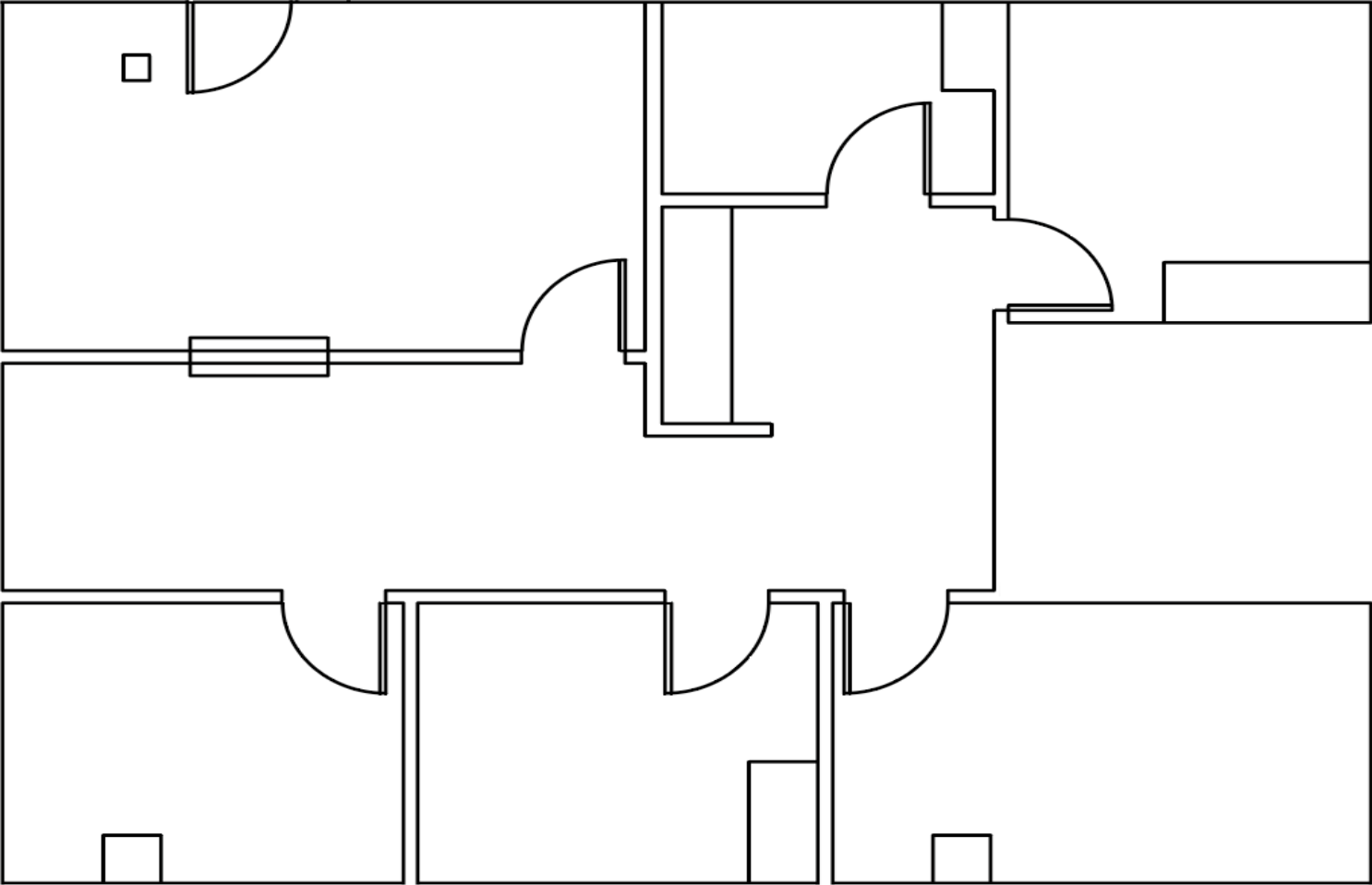
1,587 RSF



Key Plan

SUITE 202

1,267 RSF (2,449 RSF Contiguous with Suite 204)

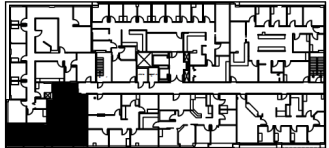
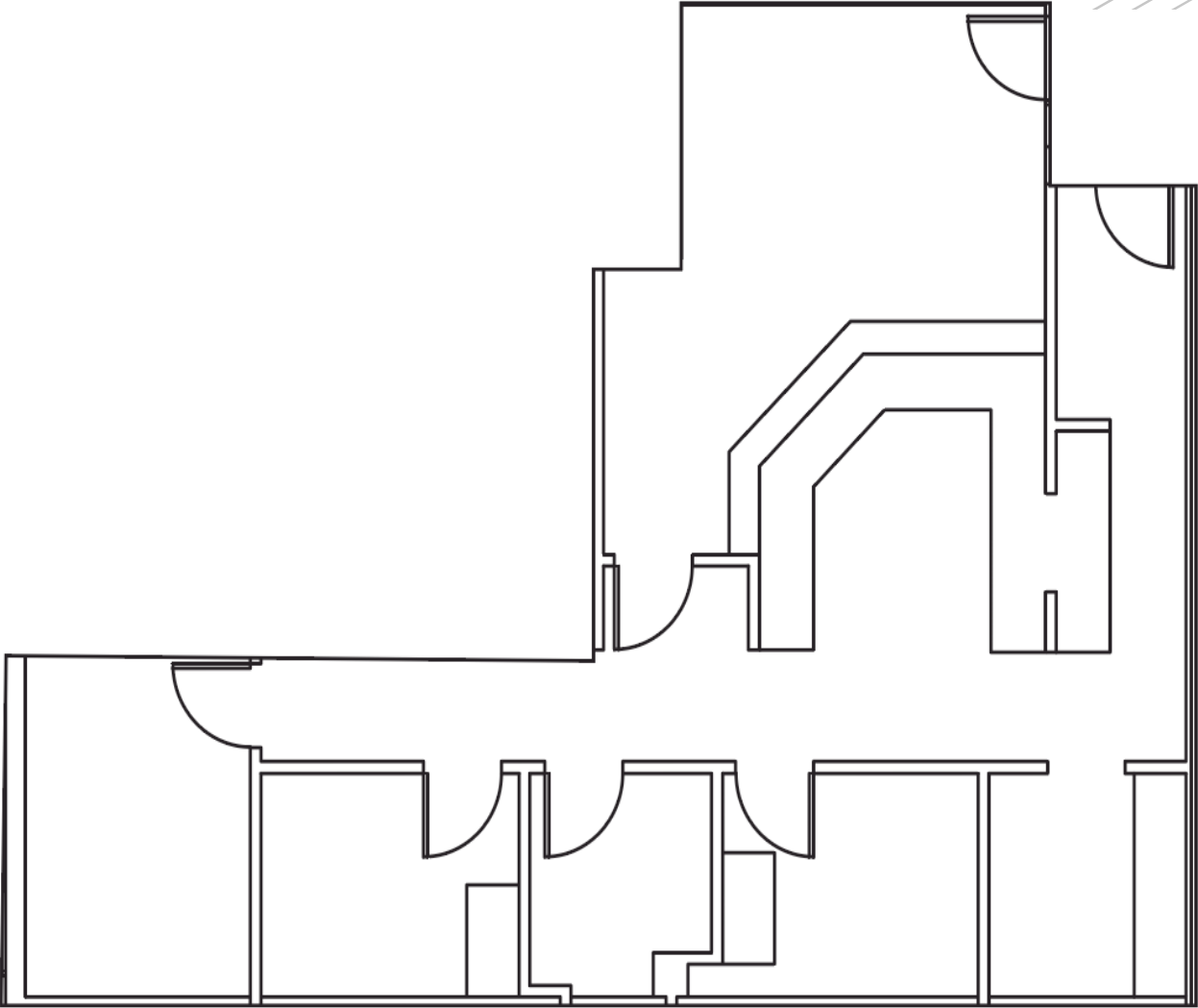


Key Plan

SUITE 204:

1,182 RSF (2,449 RSF Contiguous with Suite 202)

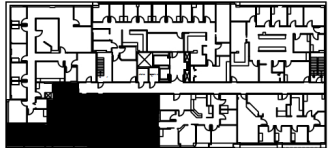
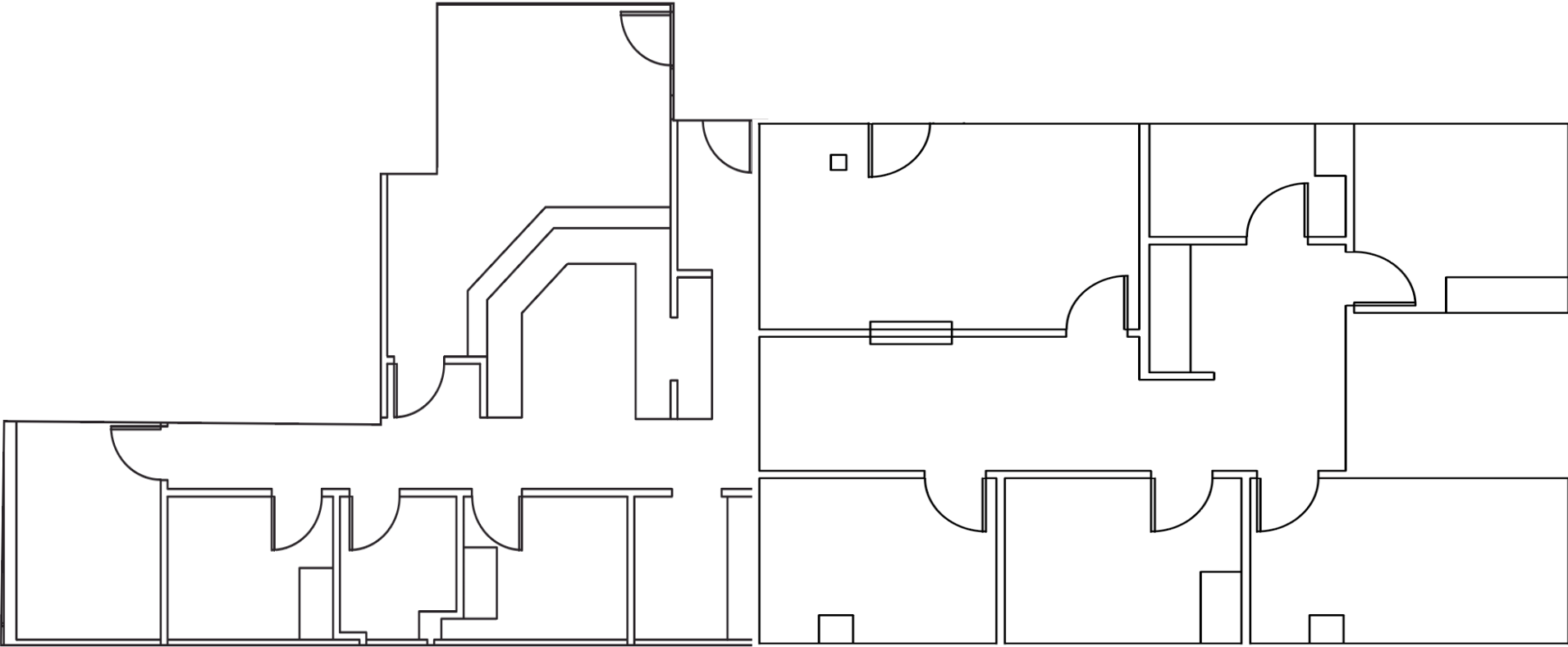
11311 Bridgeport Way SW | Lakewood, WA



Key Plan

SUITE 202 & 204

2,449 RSF (Contiguous)



Key Plan

11311 Bridgeport Way SW | Lakewood, WA

St. Clare Medical Pavilion



Marcus Yamamoto

Senior Vice President

+1 206 979 1270

marcus.yamamoto@cbre.com

Katie Smith

Senior Associate

+1 206 949 7027

katie.m.smith@cbre.com

Diane Di Furia

Sr. Transaction Manager

+1 206 386 3063

diane.difuria@cbre.com

© 2024 CBRE, Inc. All rights reserved. This information has been obtained from sources believed reliable, but has not been verified for accuracy or completeness. You should conduct a careful, independent investigation of the property and verify all information. Any reliance on this information is solely at your own risk. CBRE and the CBRE logo are service marks of CBRE, Inc. All other marks displayed on this document are the property of their respective owners, and the use of such logos does not imply any affiliation with or endorsement of CBRE. Photos herein are the property of their respective owners. Use of these images without the express written consent of the owner is prohibited.PMStudio_June2024

Healthpeak

DOC
LISTED
NYSE

CBRE