

CREATIVE EVENT SPACE FOR LEASE

1052-1056 THOMAS JEFFERSON ST NW

WASHINGTON, DC 20007



1052-1056 THOMAS JEFFERSON ST NW

WASHINGTON, DC 20007

PROPERTY SUMMARY



PROPERTY DESCRIPTION

1052 - 1056 Thomas Jefferson St NW features up to 10,600 SF of creative space in the Georgetown Washington D.C. neighborhood. The property neighbors the Georgetown waterfront and is steps away from downtown retail, restaurants and hotels.

PROPERTY HIGHLIGHTS

- Up to 10,600 SF space available in Historic Georgetown
- Open layout may accommodate a variety of uses including event hall, coworking, professional services, among others
- Parking available on 31st Street
- Ample natural light from expansive window line along the Georgetown Canal and skylights
- Current buildout has hoteling, conferencing areas, showers with built in lockers, lounge/collision area with full service commercial kitchen

VIDEO

OFFERING SUMMARY

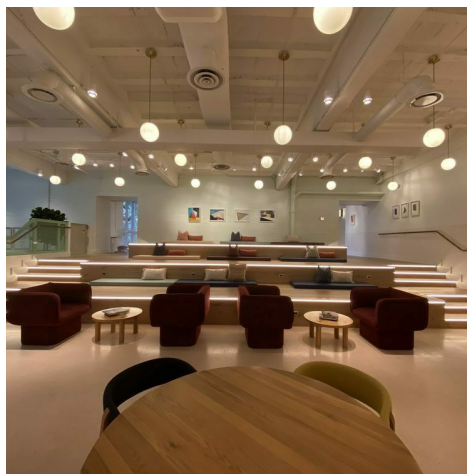
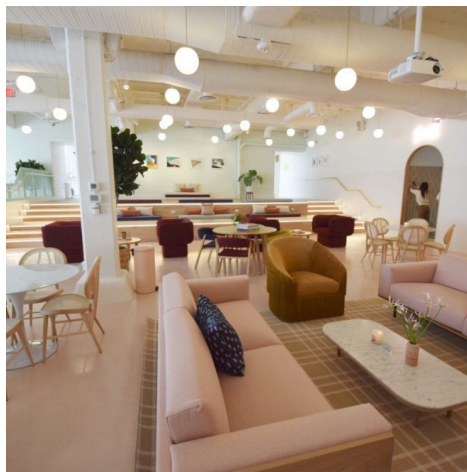
Lease Rate:	Negotiable
Available SF:	10,600 SF
Year Built:	1940
Building Size:	24,900 SF
Zoning:	MU-14

DEMOGRAPHICS	1 MILE	3 MILES	5 MILES
Total Households	19,052	186,634	381,792
Total Population	41,851	387,273	819,008
Average HH Income	\$190,886	\$187,252	\$182,454

1052-1056 THOMAS JEFFERSON ST NW

WASHINGTON, DC 20007

INTERIOR PHOTOS



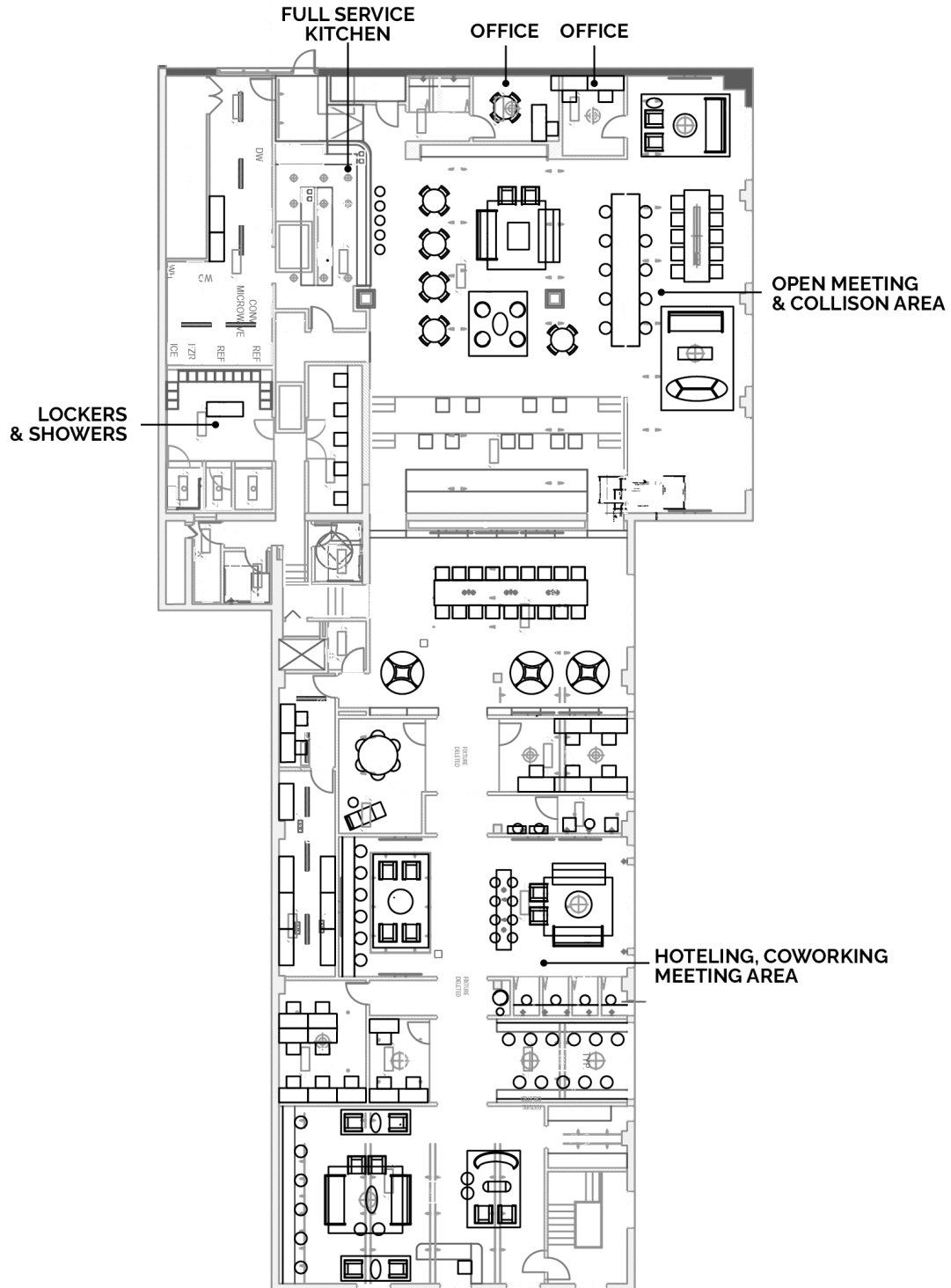
1052-1056 THOMAS JEFFERSON ST NW

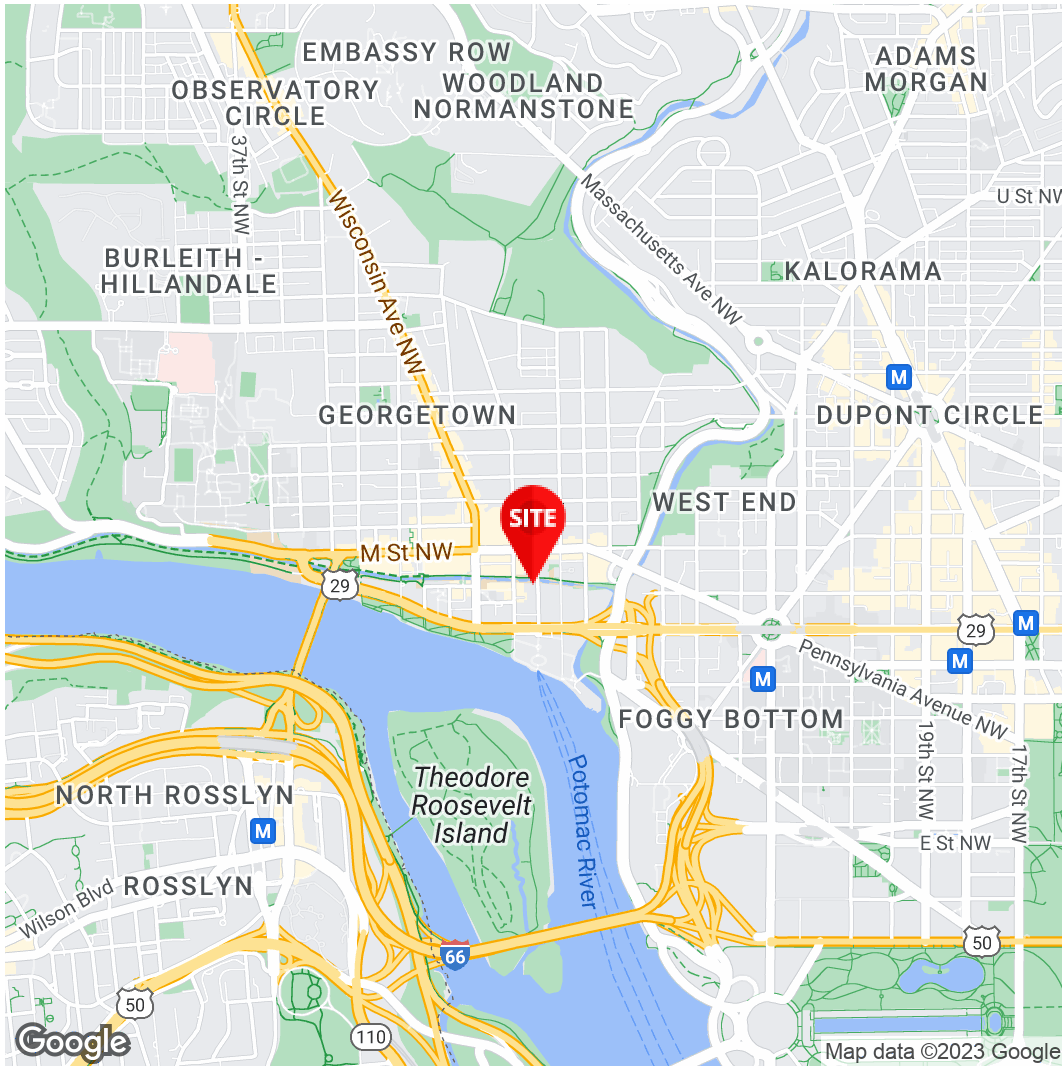
WASHINGTON, DC 20007

FLOOR PLAN



VIDEO TOUR





Rob Gray
Vice President, Investment
Sales & Leasing
571.550.9042
Robert.Gray@Divaris.Com

The information contained herein should be considered confidential and remains the sole property of Divaris Real Estate, Inc. at all times. Although every effort has been made to ensure accuracy, no liability will be accepted for any errors or omissions. Disclosure of any information contained herein is prohibited except with the express written permission of Divaris Real Estate, Inc.