

465
MEDFORD
STREET

7,000 SF - 126,000 RSF Available Immediately



SCHRAFFT'S

CITY CENTER

 THE FLATLEY COMPANY

AVAILABILITY



BUILDING SPECIFICATIONS

BUILDING SIZE:	160,000 SF
HEIGHT:	3-5 Story building
AVAILABILITY:	126,000 RSF
CEILING HEIGHTS:	14'-20'
PARKING:	1.5/1,000 SF free parking
LOADING:	100 lbs. per foot Two loading docks – dock height with levelers 93" wide
HVAC:	VAV System 1 ton per 350 SF

ELEVATOR OPENING:	4' x 7'
CAB WIDTH:	5' 8"
LENGTH:	7' 9"
HEIGHT:	8'
ELECTRICAL:	600 Amps
UTILITIES:	Gas and Electric
TEL DATA:	Verizon, Comcast
GENERATOR:	First floor generator: Milton Cat Diesel 300 KW

PARK HIGHLIGHTS



TENANT CONFERENCE CENTER



DEDICATED OUTDOOR SPACE

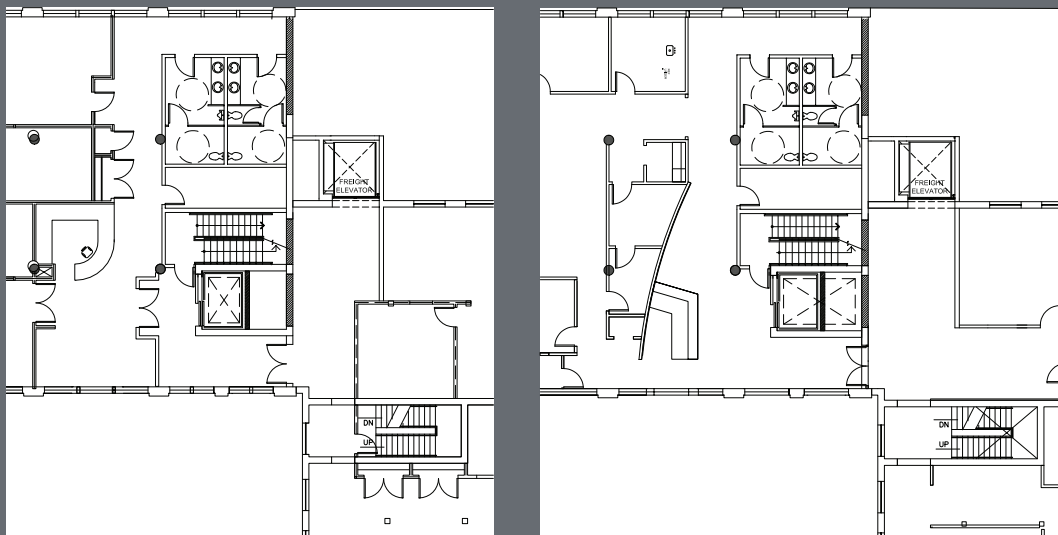
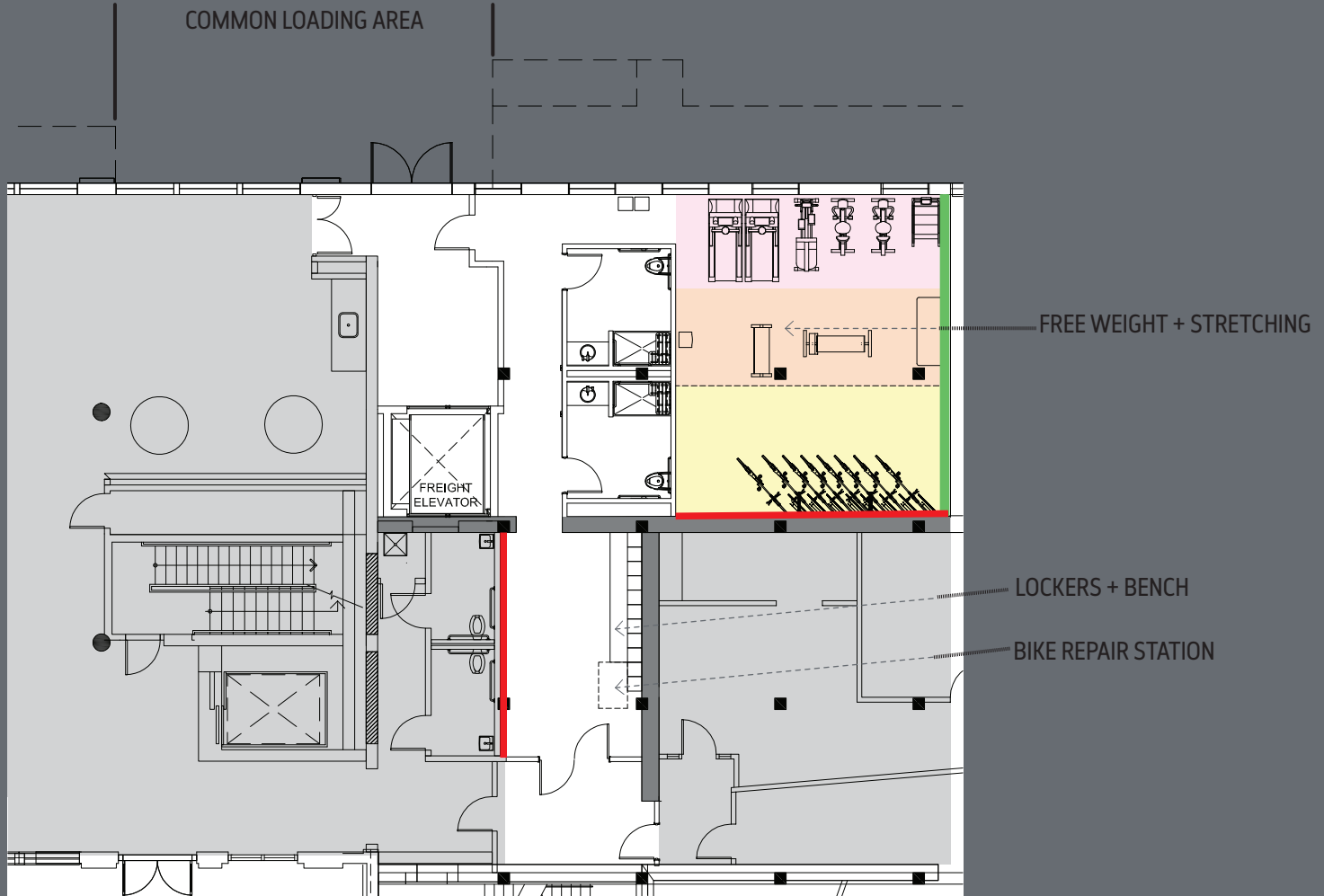


FITNESS CENTER






COLLABORATIVE CAFÉ





KEY

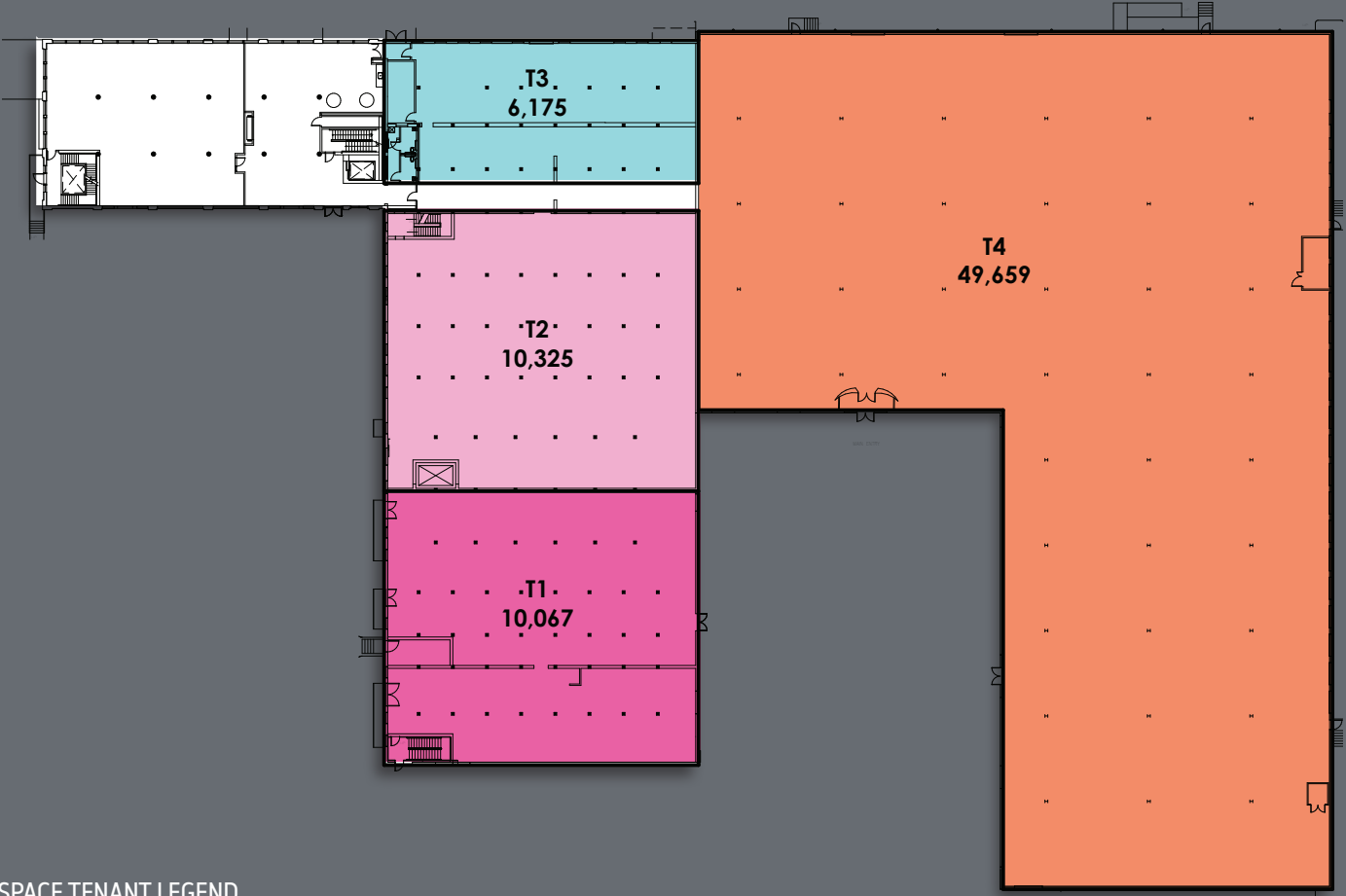
-  Floor graphic / wayfinding
-  Wall graphic
-  Mirror

FIRST FLOOR | FULL FLOOR | 76,226 SF | OPTION 1



FIRST FLOOR
457 Seats of workstations and
office space

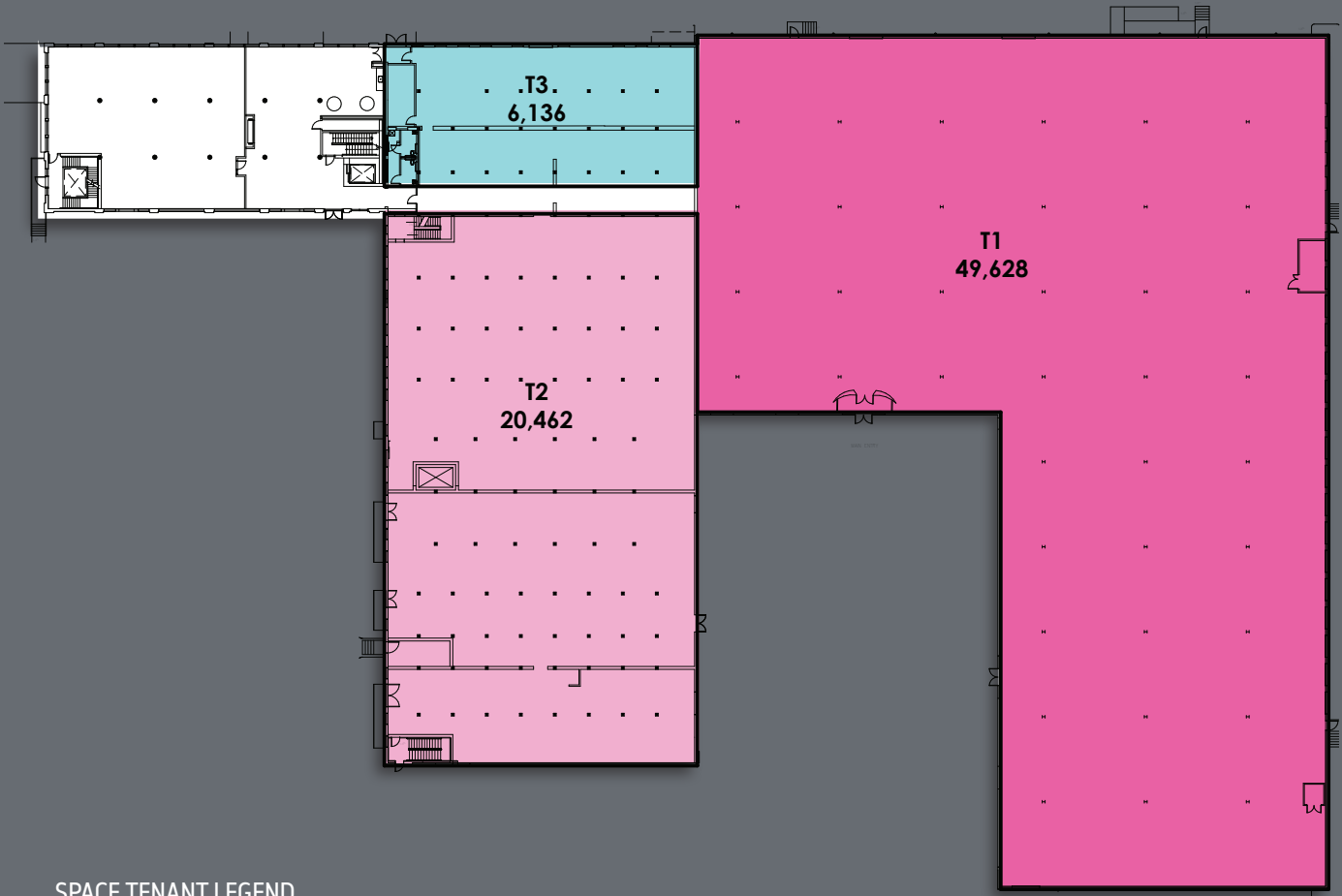
FIRST FLOOR | FULL FLOOR | 76,226 SF | OPTION 2



SPACE TENANT LEGEND

- T1
- T2
- T3
- T4

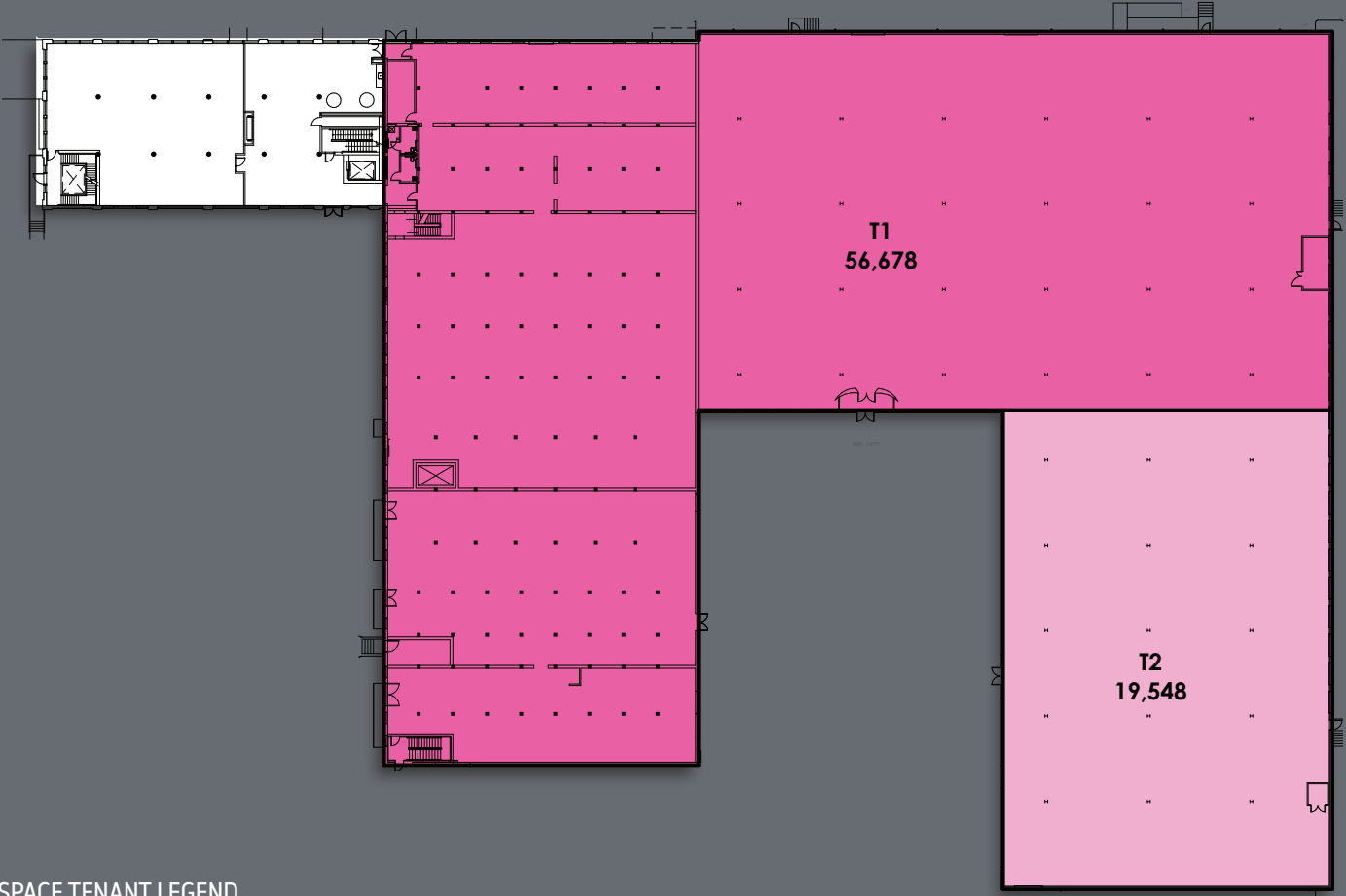
FIRST FLOOR | FULL FLOOR | 76,226 SF | OPTION 3



SPACE TENANT LEGEND

- T1
- T2
- T3
- T4

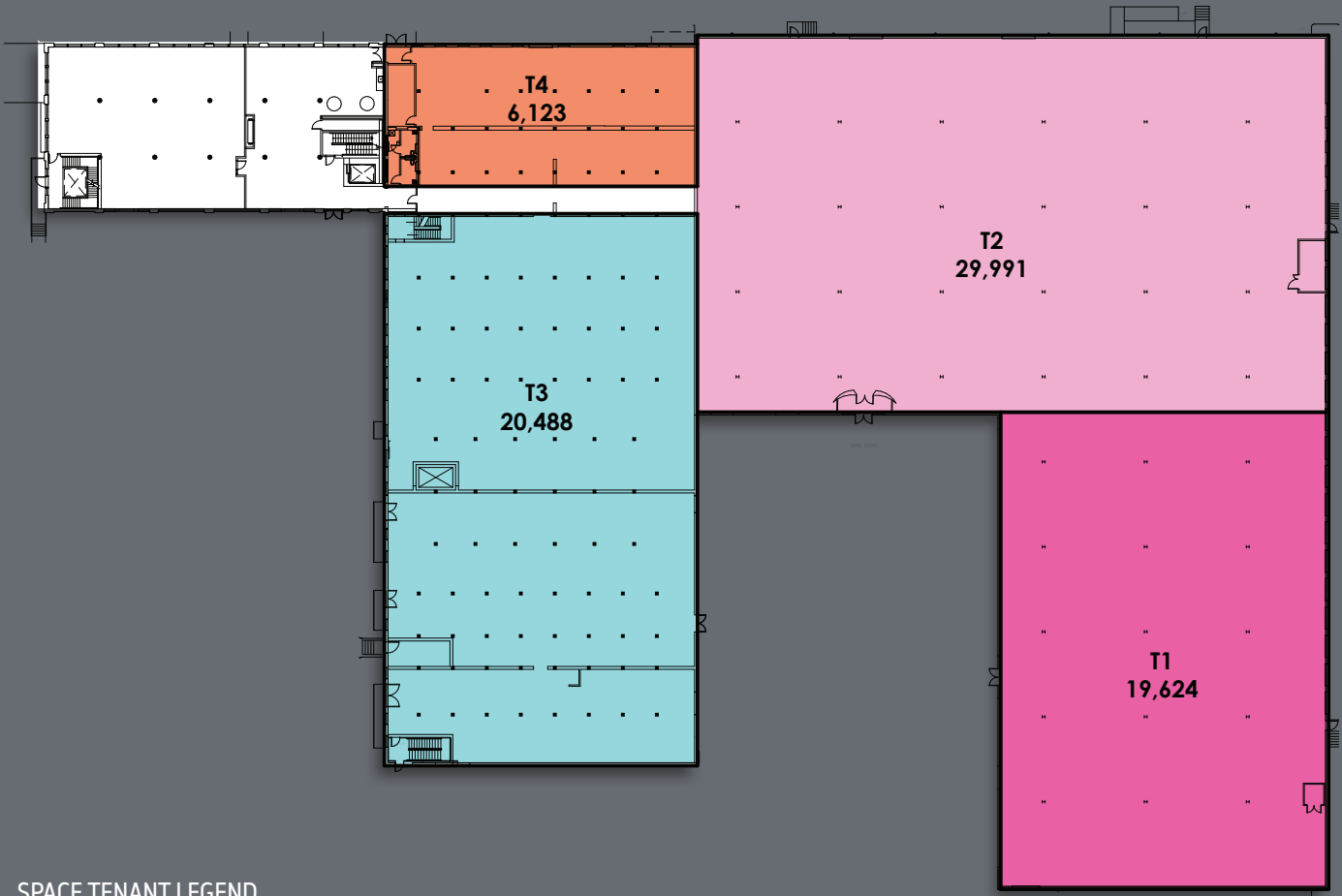
FIRST FLOOR | FULL FLOOR | 76,226 SF | OPTION 4



SPACE TENANT LEGEND

- T1
- T2
- T3
- T4

FIRST FLOOR | FULL FLOOR | 76,226 SF | OPTION 5



SPACE TENANT LEGEND

- T1
- T2
- T3
- T4

THIRD FLOOR | TEST FIT | 32,000 SF



SPACE TYPE LEGEND

- Private office
- Open office
- Meeting
- Alternate workspace
- Support

TENANT 1

- 145 Head count
- 161 SF per person
- 23 Private offices
- 101 Benching stations
- 30 Coworking seats
- 1 48-person lecture room
- 1 10-person conference room
- 3 8-person conference rooms
- 4 4-person conference rooms
- 2 2-person huddle rooms
- 14 Phone rooms
- 1 Kitchen/dining area
- 1 Coffee bar
- 1 Pantry
- 3 Copy/supply area
- Private restrooms
- Exposed brick
- Timber columns
- Windows on all four sides
- Skylights
- Informal meeting spaces
- Touch-down spaces
- 13' high ceilings

TENANT 2

- 29 Head count
- 190 SF per person
- 5 Private offices
- 101 Benching stations
- 24 Workstations
- 1 10-person conference room
- 1 4-person conference room
- 1 Informal huddle room
- 2 Phone rooms
- 1 Open lounge/pantry
- 1 Copy/supply area
- Private restrooms
- Windows on three sides
- 14' high ceilings



For more information,
contact:

John Osten
617 921 2090
john.osten@jll.com

Molly Heath
617 316 6489
molly.heath@jll.com

Anslee Krouch
617 316 6479
anslee.krouch@jll.com



 THE FLATLEY COMPANY