

LONE STAR

BUSINESS PARK

ATTAINABLE • ADAPTABLE • INDIVIDUAL

www.lonestarbusinesspark.net

2710 Business Park Dr, Buda, TX 78610



Our Property Features:

Modern Design

Glass Storefronts & Roll Up Doors

20 Foot Ceiling Clearance

Mezzanine Options for Additional Square Footage

Convenient Access to IH-35, TX-45 & SH-130



For More Information:

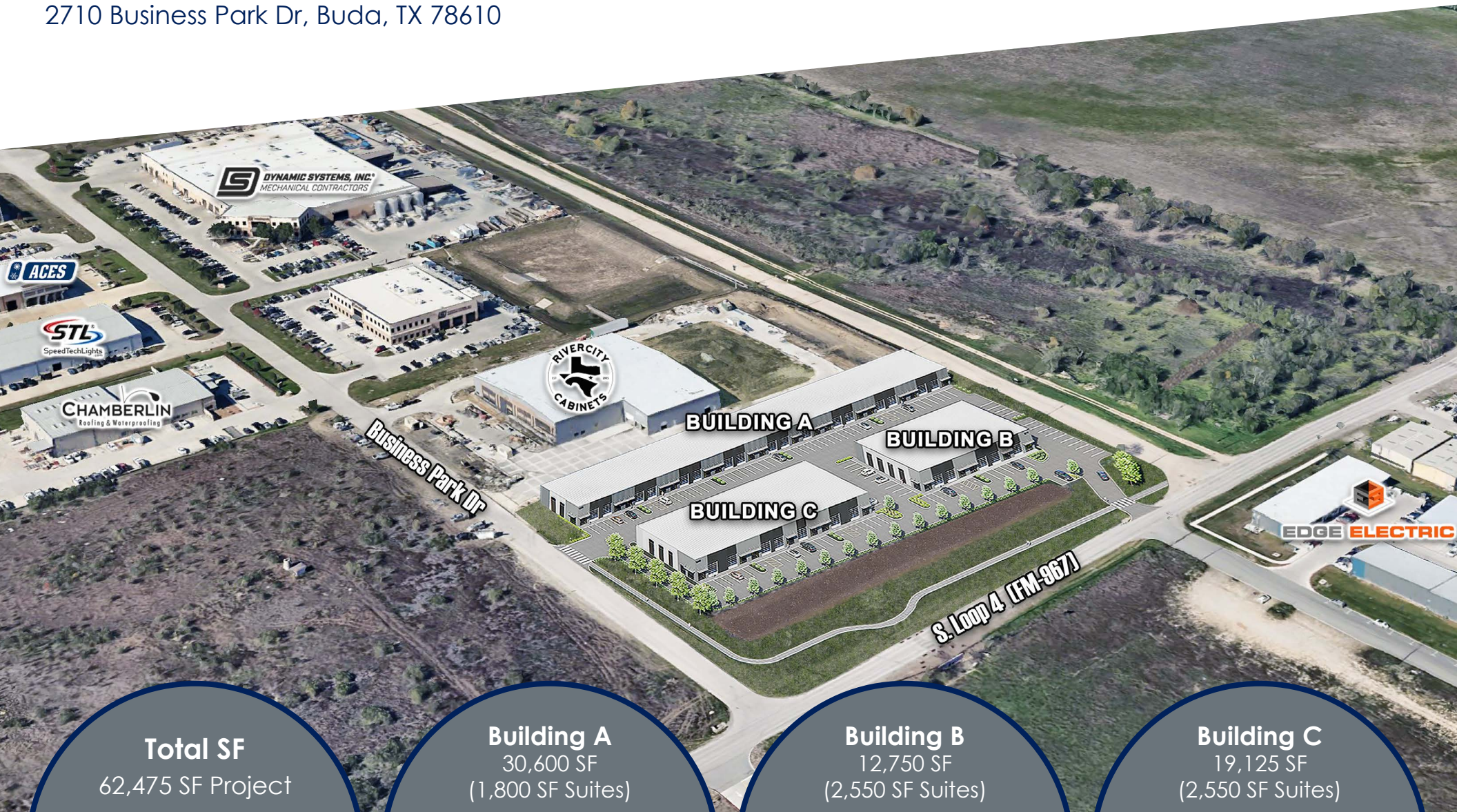
Russ Howard | Principal | **512.575.3577** | rhoward@caswellcommercial.com

Caswell Commercial | 301 Camp Craft Rd., Suite 100, Austin, Texas 78746 | O: 512.575.3577 | M: 512.788.4605

LONE STAR BUSINESS PARK

2710 Business Park Dr, Buda, TX 78610

PROJECT OVERVIEW



Total SF
62,475 SF Project

Building A
30,600 SF
(1,800 SF Suites)

Building B
12,750 SF
(2,550 SF Suites)

Building C
19,125 SF
(2,550 SF Suites)

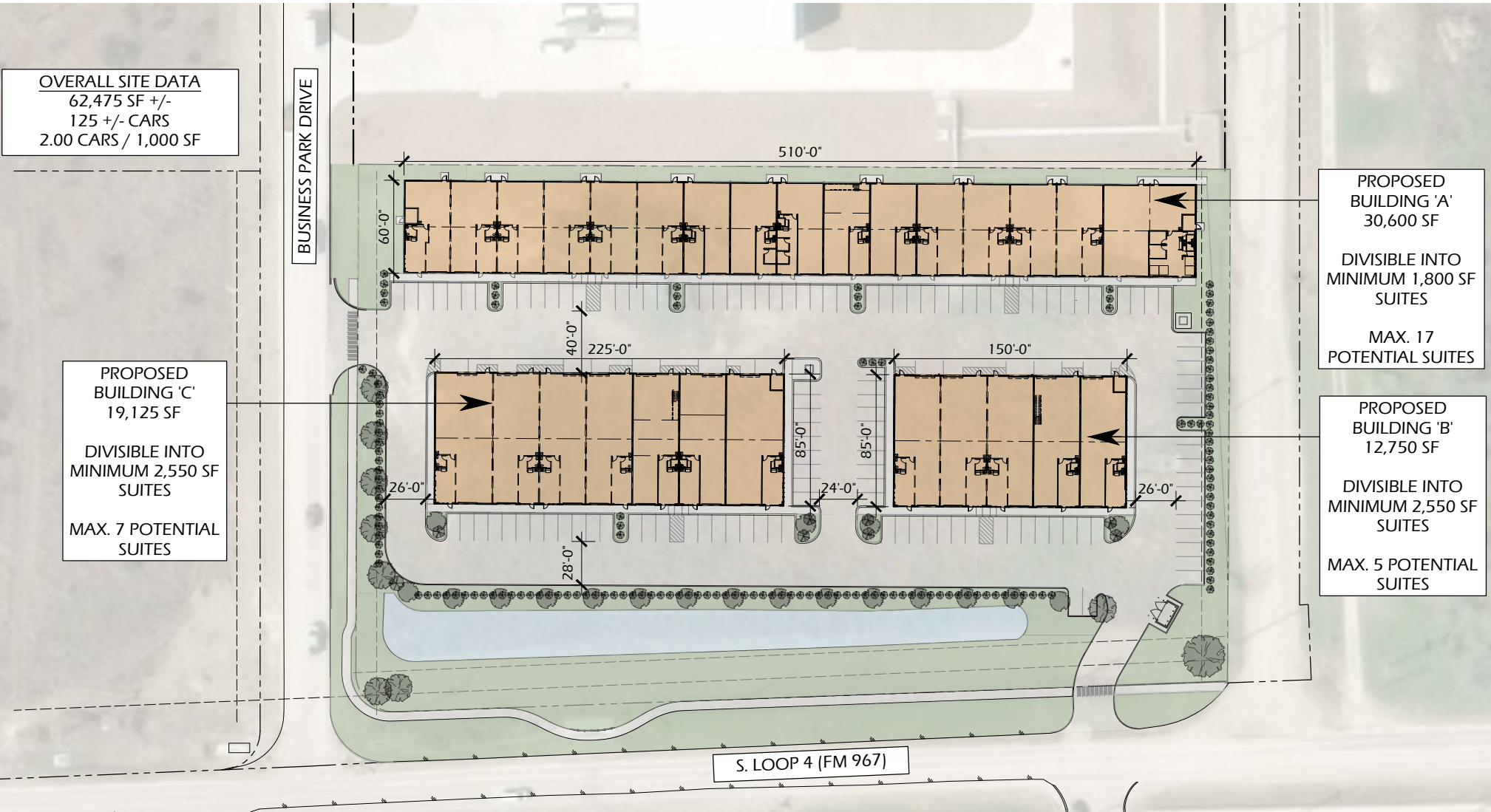


For More Information:

Russ Howard | Principal | **512.575.3577** | rhoward@caswellcommercial.com

Caswell Commercial | 301 Camp Craft Rd., Suite 100, Austin, Texas 78746 | O: 512.575.3577 | M: 512.788.4605

2710 Business Park Dr, Buda, TX 78610



OVERALL SITE DATA
 62,475 SF +/-
 125 +/- CARS
 2.00 CARS / 1,000 SF

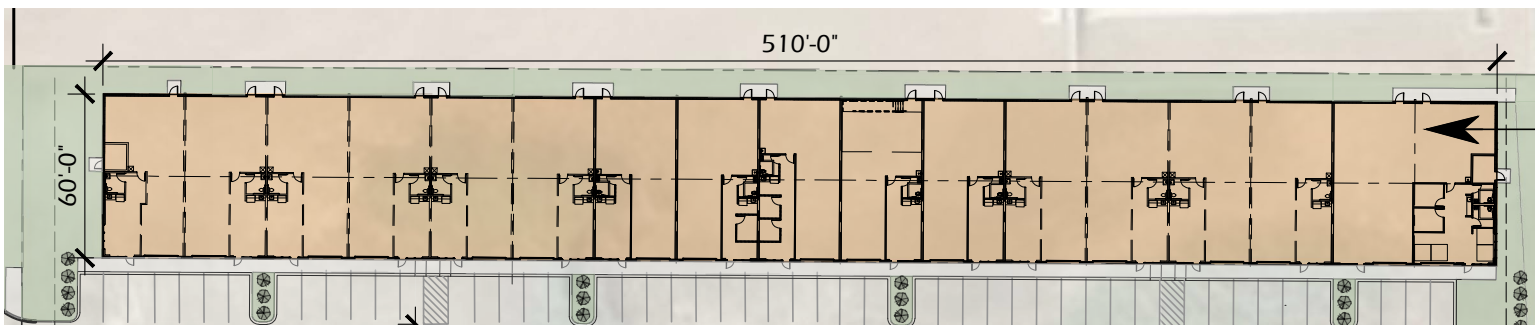
PROPOSED BUILDING 'C'
 19,125 SF
 DIVISIBLE INTO
 MINIMUM 2,550 SF
 SUITES
 MAX. 7 POTENTIAL
 SUITES

PROPOSED BUILDING 'A'
 30,600 SF
 DIVISIBLE INTO
 MINIMUM 1,800 SF
 SUITES
 MAX. 17
 POTENTIAL SUITES

PROPOSED BUILDING 'B'
 12,750 SF
 DIVISIBLE INTO
 MINIMUM 2,550 SF
 SUITES
 MAX. 5 POTENTIAL
 SUITES

S. LOOP 4 (FM 967)





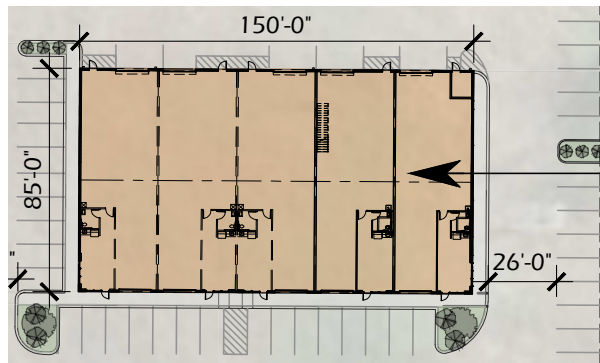
- 30,600 SF
- 1,800 SF Suites (30 ft x 60 ft)
- Maximum of 17 potential Suites
- 12 x 14 Glass Overhead Door
- 9 ft Glass Storefront



For More Information:

Russ Howard | Principal | **512.575.3577** | rhoward@caswellcommercial.com

Caswell Commercial | 301 Camp Craft Rd., Suite 100, Austin, Texas 78746 | O: 512.575.3577 | M: 512.788.4605



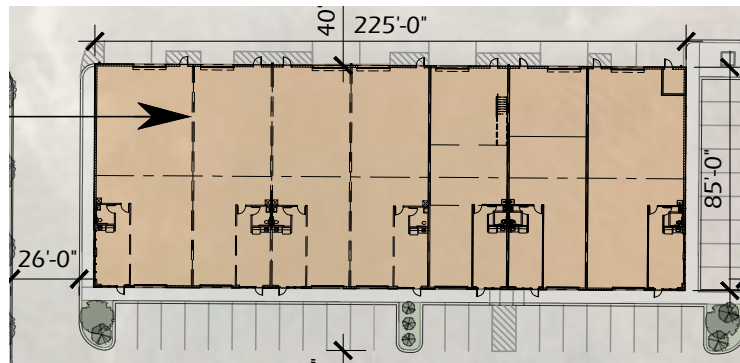
- 12,750 SF
- Divisible into minimum 2,550 SF Suites
- Maximum of 5 potential Suites
- 12 x 14 Glass Overhead Door
- 9 ft Glass Storefront



For More Information:

Russ Howard | Principal | **512.575.3577** | rhoward@caswellcommercial.com

Caswell Commercial | 301 Camp Craft Rd., Suite 100, Austin, Texas 78746 | O: 512.575.3577 | M: 512.788.4605



- 19,125 SF
- Divisible into minimum 2,550 SF Suites
- Maximum of 7 potential Suites
- 12 x 14 Glass Overhead Door
- 9 ft Glass Storefront



For More Information:

Russ Howard | Principal | **512.575.3577** | rhoward@caswellcommercial.com

Caswell Commercial | 301 Camp Craft Rd., Suite 100, Austin, Texas 78746 | O: 512.575.3577 | M: 512.788.4605



For More Information:

Russ Howard | Principal | **512.575.3577** | rhoward@caswellcommercial.com

Caswell Commercial | 301 Camp Craft Rd., Suite 100, Austin, Texas 78746 | O: 512.575.3577 | M: 512.788.4605

LONE STAR BUSINESS PARK

www.lonestarbusinesspark.net

SITE AERIAL

2710 Business Park Dr, Buda, TX 78610



For More Information:

Russ Howard | Principal | **512.575.3577** | rhoward@caswellcommercial.com

Caswell Commercial | 301 Camp Craft Rd., Suite 100, Austin, Texas 78746 | O: 512.575.3577 | M: 512.788.4605

LONE STAR BUSINESS PARK

www.lonestarbusinesspark.net

TOTAL BUSINESSES (10 MI)

4,782

TOTAL EMPLOYEES (10 MI)

45,649

TOTAL POPULATION (10 MI)

255,655

TOTAL HOUSEHOLDS (10 MI)

93,783

AVERAGE HH INCOME (10 MI)

\$130,970

AREA STATISTICS

- 3.9 MILLION RESIDENTS
- 8 COUNTIES
- 83 CITIES
- 6731 SQUARE MILES

STRATEGIC LOCATION

2710 Business Park Dr, Buda, TX 78610



For More Information:

Russ Howard | Principal | **512.575.3577** | rhoward@caswellcommercial.com

Caswell Commercial | 301 Camp Craft Rd., Suite 100, Austin, Texas 78746 | O: 512.575.3577 | M: 512.788.4605