

# *Lower Pacific Heights*

## VICTORIAN OFFICE SPACE AVAILABLE

**1362 Post Street  
San Francisco  
CA 94109**

### PROPERTY HIGHLIGHTS

- Approximately 8,000 SF available
- Negotiable terms
- Three floors + basement
- Each floor has approximately 1,400 SF
- Kitchen in basement and rear patio

### MAKE OFFER!

Office and site measurements have been estimated. Any interested party is encouraged to take its own measurements. The above information though obtained from reliable sources is not warranted by the agent or property owner.



NORTHERN  
*Peninsula Properties*



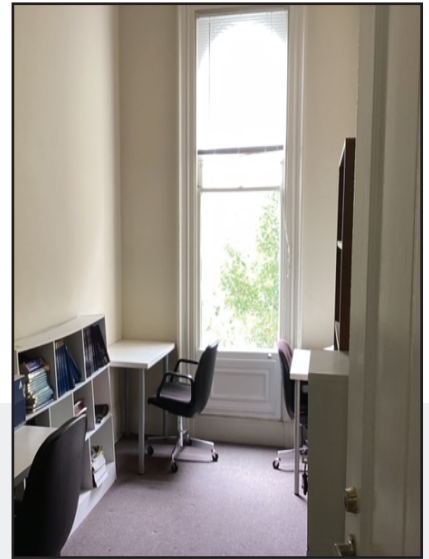
**Pablo Wong**

Real Estate Broker  
DRE 00784340

(415) 317-8339  
nppinc1@gmail.com

# Lower Pacific Heights

## VICTORIAN OFFICE SPACE AVAILABLE



The first level and basement is occupied by the Korean Center Inc. (<https://koreancentersf.org/>). Each level has about five rooms, some were use by classrooms and others as offices and one as a lounge. The main entrance is on the first floor and it features a living room or waiting area that may be available to the second and third floor tenants, along with the kitchen located in the basement and a patio located in the rear. Wheel chair access available only to basement level from street. There's no elevator in the building. Any interested party is encouraged to have the property inspected by a general contractor.



DRE 00784340

Pablo Wong, Real Estate Broker, does not guarantee the accuracy of square footage, lot size, or other information concerning the condition or features of the property provided by the landlord or obtained from public records or other sources and the renter is advised to independently verify the accuracy of that information through personal inspection with appropriate licenced professionals.

NORTHERN  
*Peninsula Properties*

Phone: (415) 860-0538

Email: [nppinc1@gmail.com](mailto:nppinc1@gmail.com)

Website: [NPPinc.us](http://NPPinc.us)

CA DRE: 02078164