



CAPITOL
EQUITIES

FOR LEASE

Providing creative commercial real estate solutions since 1997



SINGLE OFFICE | 344 SF

BEXLEY

3140 E BROAD ST, COLUMBUS, OH 43209

ED FELLOWS

VP Brokerage
614.760.5660 x123
efellows@capitolequities.com



Property Highlights

- AVAILABLE DECEMBER 2025
- This single, wide open office provides affordable professional space for your business needs
- Common amenities available with your lease include shared conference room (shown in top right photo), reception area, kitchen and restrooms
- All utilities and janitorial included in monthly rent
- Great East Broad exposure at the intersection of Edgevale Road, close to several amenities and retailers
- Enjoy ample on-site parking for employees and guests, plus located on main public transportation routes
- Phone and internet services will be tenant responsibility

Location Description

Situated in a dynamic neighborhood, 3140 East Broad provides many amenities and attractions for its office tenants. Enjoy easy access to the vibrant Bexley community including local dining hotspots such as The Top Steakhouse, Piada Italian, Brassica, and cultural destinations like Franklin Park Conservatory. Easy access to downtown Columbus along East Broad, and just minutes from Columbus Country Club.

OFFERING SUMMARY

Available Single Office	344 SF
Monthly Gross Rent	\$350.00
Shared Amenities	Conference Room, Reception, Kitchenette and Restrooms
Tenant Responsible for	Internet & Phone Services

ED FELLOWS

VP Brokerage
614.760.5660 x123
efellows@capitolequities.com

CAPITOLEQUITIES.COM

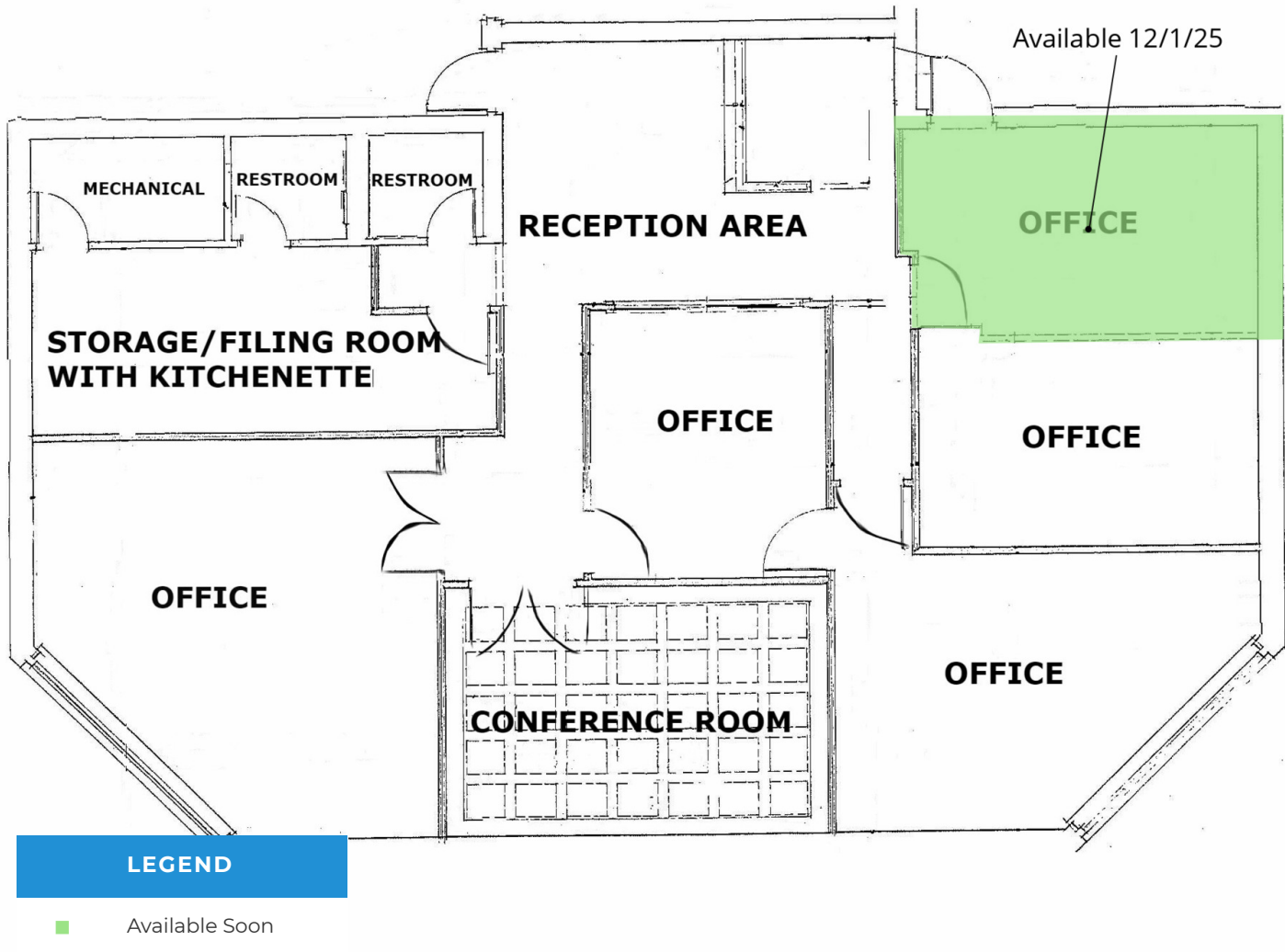
The information contained herein was furnished by sources believed to be reliable, but it is not guaranteed, warranted or represented by Capitol Equities. The presentation of this property is submitted subject to errors, omissions, change of price or condition prior to sale or lease, or withdrawn without notice.



CAPITOL
EQUITIES

FOR LEASE | OFFICE BEXLEY

3140 E BROAD ST, COLUMBUS, OH 43209



Available Spaces

SUITE	SIZE	RATE
■ 3140 Broad Street, Office A	344 SF	\$350 per month

ED FELLOWS

VP Brokerage
614.760.5660 x123
efellows@capitolequities.com

CAPITOLEQUITIES.COM



CAPITOL
EQUITIES

FOR LEASE | OFFICE BEXLEY

3140 E BROAD ST, COLUMBUS, OH 43209



LOCATION OVERVIEW

Situated in a dynamic neighborhood, 3140 East Broad provides many amenities and attractions for its office tenants. Enjoy easy access to the vibrant Bexley community including local dining hotspots such as The Top Steakhouse, Piada Italian, Brassica, and cultural destinations like Franklin Park Conservatory. Easy access to downtown Columbus along East Broad, and just minutes from Columbus Country Club.

Map data ©2025 Google Imagery ©2025 Airbus, CNES / Airbus, Landsat / Copernicus, Maxar Technologies, USDA/FPAC/GEO

ED FELLOWS

VP Brokerage

614.760.5660 x123

efellows@capitolequities.com

CAPITOLEQUITIES.COM