

BUILDING SETBACKS
FRONT 5' OR GREATER
REAR 5' OR GREATER
SIDE 5'

STREET 9th

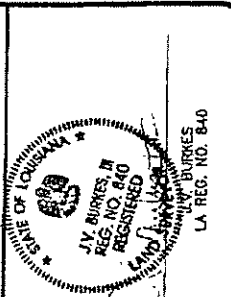
SMART PLACE
60' R/W

POB
107

The Point of Beginning is described as being at the intersection of the right-of-way of Smart Place, Section 3, T-9-S, R-14-E, and the right-of-way of the right-of-way of Smart Place, Section 3, T-9-S, R-14-E, at the intersection of the right-of-way of Smart Place, Section 3, T-9-S, R-14-E, and the right-of-way of Smart Place, Section 3, T-9-S, R-14-E.

GRAPHIC SCALE
(IN FEET)
1" = 40' FEET

NOTES: THIS MAP IS 11" X 17".
IT WILL NOT PRINT TO SCALE UNLESS
USER ELECTS TO PRINT ON 11" X 17" PAPER.



J.V. Burkes & Associates, Inc.
SURVEYING ENGINEERING & ENVIRONMENTAL
2000 East Coast Blvd, Suite B
Slidell, Louisiana 70461
E-mail: jburkes@jvburkes.com
Phone: 985-649-0075 Fax: 985-649-0154
Mississippi Phone: 228-435-5800

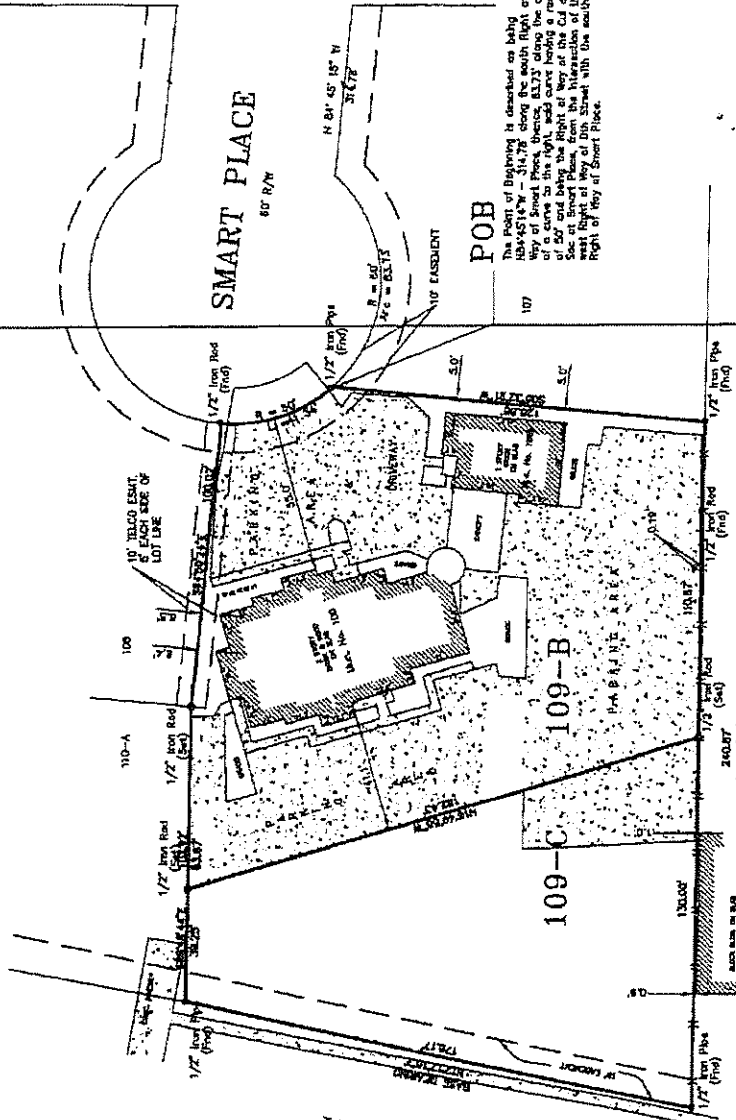
**LOTS 109-B & 109-C,
PROFESSIONAL SERVICES CENTER SD,
LOCATED IN THE CITY OF SUDELL,
IN SECTION 3, T-9-S, R-14-E,
ST. TAMMANY PARISH, LOUISIANA**

Representation is made by this plat that the same is a true and correct representation of the actual conditions of the land as shown on the ground and as the same may appear on the ground, and that the same is a true and correct representation of the actual conditions of the land as shown on the ground and as the same may appear on the ground, and that the same is a true and correct representation of the actual conditions of the land as shown on the ground and as the same may appear on the ground.

GAUSE BLVD. side

I certify that this plat was prepared on actual survey and that I am a duly licensed Professional Engineer in the State of Louisiana. I have not been convicted of any crime involving moral turpitude, and I have not been disciplined by any professional board or organization. I have not been convicted of any crime involving moral turpitude, and I have not been disciplined by any professional board or organization.

DATE: 11/24/2004
DRAWN BY: BC
CHECKED BY: MD
DWG. NO: 1044291
SHEET 1 OF 1



STREET 7th

